

**Diffenbach's New Holland Auction Center, Ltd.**  
 100 WEST JACKSON ST. • BOX 485 • NEW HOLLAND, PA. 17557  
 PHONE (717) 355-7253 (717) 393-4464 (717) 354-3297



**HAY SALE EVERY MONDAY- 10:00 A.M.**

**1990 SPECIAL SALES**

APRIL 1990						
S	M	T	W	T	F	S
1	2	3	4	5	6	7
8	9	10	11	12	13	14
15	16	17	18	19	20	21
22	23	24	25	26	27	28
29	30	-	-	-	-	-

MAY 1990						
S	M	T	W	T	F	S
-	-	1	2	3	4	5
6	7	8	9	10	11	12
13	14	15	16	17	18	19
20	21	22	23	24	25	26
27	28	29	30	31	-	-

JUNE 1990						
S	M	T	W	T	F	S
-	-	-	-	1	2	3
4	5	6	7	8	9	10
11	12	13	14	15	16	17
18	19	20	21	22	23	24
25	26	27	28	29	30	31

JULY 1990						
S	M	T	W	T	F	S
1	2	3	4	5	6	7
8	9	10	11	12	13	14
15	16	17	18	19	20	21
22	23	24	25	26	27	28
29	30	31	-	-	-	-

AUGUST 1990						
S	M	T	W	T	F	S
-	-	-	1	2	3	4
5	6	7	8	9	10	11
12	13	14	15	16	17	18
19	20	21	22	23	24	25
26	27	28	29	30	31	-

SEPTEMBER 1990						
S	M	T	W	T	F	S
-	-	-	-	-	1	2
3	4	5	6	7	8	9
10	11	12	13	14	15	16
17	18	19	20	21	22	23
24	25	26	27	28	29	30

OCTOBER 1990						
S	M	T	W	T	F	S
-	1	2	3	4	5	6
7	8	9	10	11	12	13
14	15	16	17	18	19	20
21	22	23	24	25	26	27
28	29	30	31	-	-	-

NOVEMBER 1990						
S	M	T	W	T	F	S
-	-	-	-	1	2	3
4	5	6	7	8	9	10
11	12	13	14	15	16	17
18	19	20	21	22	23	24
25	26	27	28	29	30	-

DECEMBER 1990						
S	M	T	W	T	F	S
-	-	-	-	-	-	1
2	3	4	5	6	7	8
9	10	11	12	13	14	15
16	17	18	19	20	21	22
23	24	25	26	27	28	29

- TUES. & WED. APR. 17 & 18 9:00 A.M. Quilts, Crafts, & Buggies
- FRI. APR. 20 9:00 A.M. Farm Equipment & Supplies
- SAT. APR. 28 9:30 A.M. Toys Of All Descriptions, Farm Toys, Winross Trucks, Dolls, Musical Instruments.
- TUES. MAY 1 6:00 P.M. Lawn Mowers & Garden Equipment
- SAT. MAY 12 9:00 A.M. Joe E. Stoltzfus, 731 Nottingham Rd., Peach Bottom, Pa. Shop Equipment and Tools (On the Farm)
- FRI. MAY 18 9:00 A.M. Farm Equipment & Supplies
- SAT. JUNE 2 9:00 A.M. Consignment Auction Antique Furniture.
- FRI. JUNE 15 9:00 A.M. Farm Equipment & Supplies
- SAT. JUNE 30 10:00 A.M. Bertha Shirk, Paradise. Real Estate, HH Goods & Antiques (On the premises)
- FRI. JULY 13 9:00 A.M. Farm Equipment & Supplies
- TUES. & WED., JULY 24 & 25 9:00 A.M. Quilts, Crafts, & Buggies
- FRI. AUG. 17 9:00 A.M. Farm Equipment & Supplies
- TUES. AUG. 28 6:00 P.M. Guns of all descriptions
- TUES. SEPT. 4 6:00 P.M. Lawn Mowers & Garden Equipment
- FRI. SEPT. 14 9:00 A.M. Farm Equipment & Supplies
- TUES. SEPT. 25 6:00 P.M. Guns of all descriptions
- SAT. OCT. 6 9:00 A.M. Camp Deer Park Benefit Auction
- FRI. OCT. 12 9:00 A.M. Farm Equipment & Supplies
- TUES. & WED., OCT. 23 & 24 9:00 A.M. Quilts, Crafts, & Buggies
- FRI. NOV. 9 9:00 A.M. Farm Equipment & Supplies
- SAT. NOV. 24 9:00 A.M. Toys, Crafts, Gifts, & Tools

**Contact Us For Rates  
And Dates For Your Sale.**

**ADD YOUR SALE TO THIS LISTING NOW!**  
**Diffenbachs Aucts. 225L**  
*Bonded Licensed Livestock Dealer and Order Buyer*

**Equipped And Ready  
To Serve You**

**SPECIAL HEIFER SALE**  
**SATURDAY, MAY 5**  
 10:00 A.M.

**NEW HOLLAND SALES STABLES INC.**  
**THE ACTION AUCTION**

**SPECIAL STOCKER AND FEEDER SALE**  
**FRIDAY, APRIL 20**  
 7:00 P.M.

**LIVESTOCK IS OUR ONLY BUSINESS**

**MONDAY**

**SLAUGHTER HOGS**

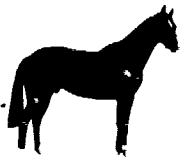


**EARLY BIRD HOG SALE**  
**7:30 A.M.**

Sell Your Hogs At New Holland Sales Stables, Inc. See them weighed, sold and pickup your check.

**10:00 AM**

**HORSES MULES**



**1:30 PM BEEF SALE**



**SHEEP**



**CALVES**

**WEDNESDAY**

**DAIRY HEIFERS 11:00 AM COW SALE 12:00 NOON COWS**



We have the usual run of 50 to 100 Heifers, all ages. Loads of fresh cows and springers from our regular shippers. Also some local fresh cows and springers.

**1:30 P.M. FEEDER PIG SALE**



Pigs are accepted after 6:30 A.M. State graded from 8 to 12 Dairy Barn and Feeder Pig Barn are cleaned and disinfected weekly for your protection.

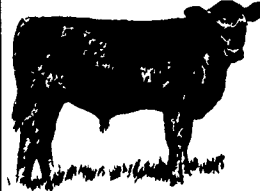
**THURSDAY**

**Beef Auction 10:00 A.M.**

**BULLS STEERS BEEF COWS**



**STOCKERS & FEEDERS**



**1:30 P.M.**

**SHEEP GOATS CALVES**



**NEW HOLLAND SALES STABLES, INC.**

12 Miles East of Lancaster Off Route 23, New Holland, Penna.

**MANAGERS**  
 Norman & David Kolb - 717-397-5538

**Field Representatives**  
 Luke Eberly - 215-267-6608 738-1865  
 Homer Eberly - 215-267-3047

**Sale Barn Officer Manager**  
 Roger Floyd - 717-354-4341

**Order Buyer**  
 Paul Good - 215-445-6662  
**Feeder Pig Representative**  
 Mel Hoover - 717-354-8397