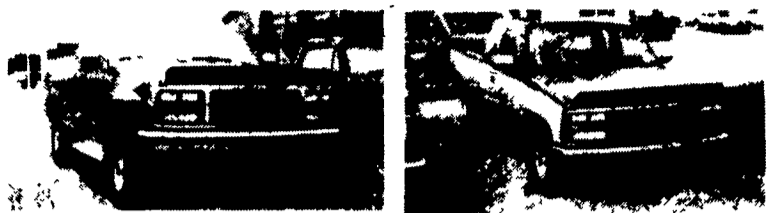


FOR SALE 1988 F800 turbo diesel 5+2, AB, A/C, 20' grain dump, 237" WB, 42,000mi, will sell either just cab and chassis. 45' shed trailer and 32' flat bed (717)896-8766.

FOR SALE: Six trucks, all one owner: Two 1983 S15 GMC's; Four 1983 Ford Rangers. All four cylinders, auto trans., low mileage, \$2,200/each. Call 717-867-1937

WANT: Mack B-61, any condition and old large farm tractor, running condition. HERK LANE, Box 1205, Frederick, MD, 21701-1003 (301)696-0978.

## USED TRUCKS



1989 GMC SLE HD 4x4, 4 Spd., PS, PB, AM/FM Cass., Cruise, Tilt, PW, PDL, Air, AT, PS, PB, AM/FM Cass., Cruise & Tilt, Sliding Rear Window, 454 FI, Running 350 FI, Class III Hitch, Local-1 Owner, Red Boards, 13,000 Miles, Exc. Cond. **\$14,500**

1988 Chevy Silverado 1500, Extended Cab, AM/FM Cass., Cruise, Tilt, PW, PDL, Air, AT, PS, PB, AM/FM Cass., Cruise & Tilt, Sliding Rear Window, 454 FI, Running 350 FI, Class III Hitch, Local-1 Owner, Red & Silver, 25,000 Miles, Exc. Cond. **\$12,500**

Financing Available

### MARTIN'S AUTO SALES

725 E. Main St., New Holland, PA 17557  
Office (717) 354-9967 or (215) 445-4519

## FISHER'S TRAILER SALES

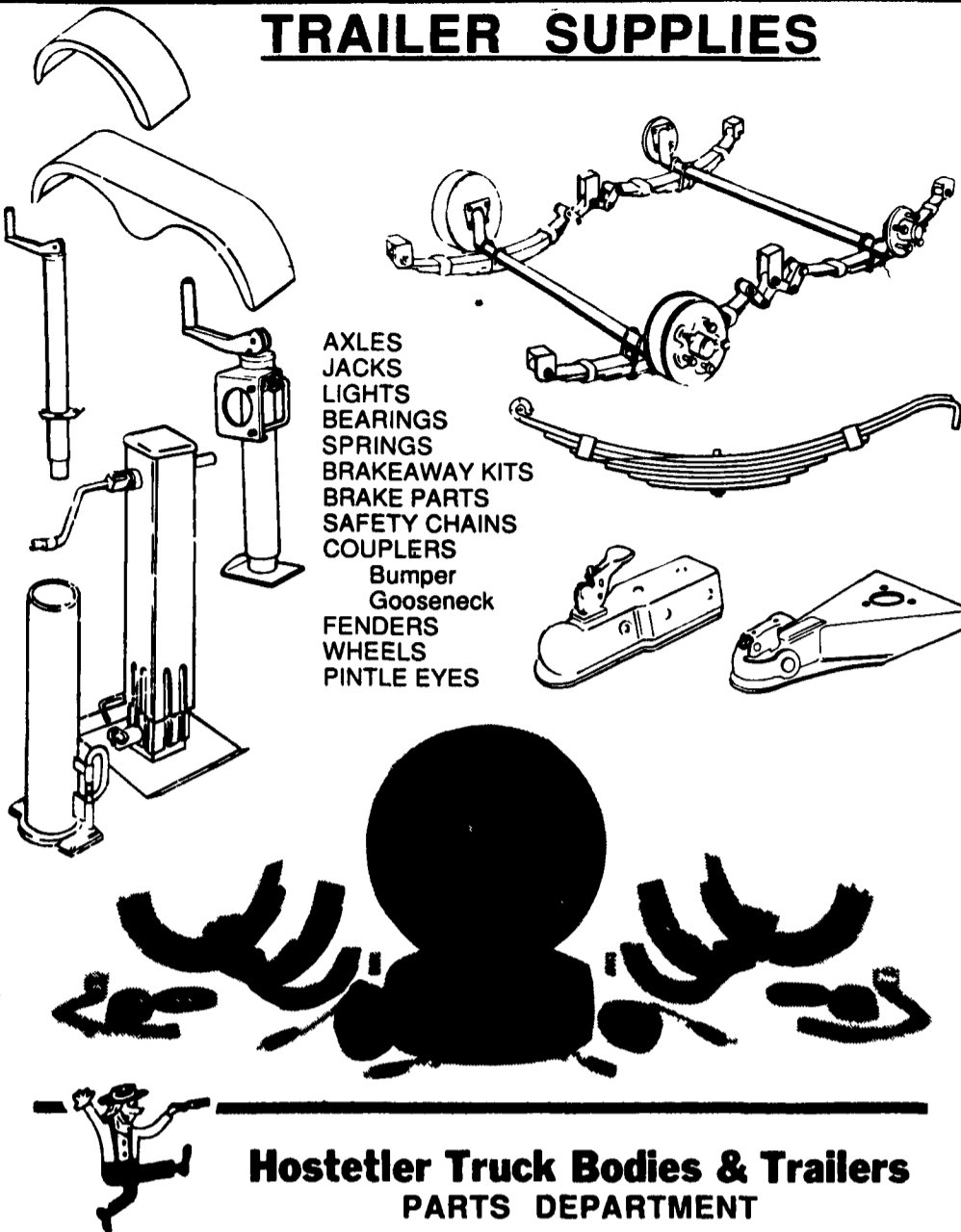
CUSTOM FAB PONDEROSA CAR MATE  
MORITZ EL PASO MONARCH HILLSBORO  
HORSE STOCK UTILITY

Stock Gn '78 7x20 \$1700  
Utility 7x9 tilt \$350  
Stock '79 Bp 6x12 4 wheel brakes good condition \$1400  
Stock 7 1/2 x9 1/2 Bp (farm use) \$400  
1-Horse Bp \$350  
Stock Gn 6x16 '86 good condition \$2400  
2-Horse Bp w/ramp \$600  
Utility Bp '90 16' w/rails \$1100  
Stock Bp '89 6x14 center gate \$2200  
Other new and used trailers in stock or custom order

(717) 242-0941  
RD #2 McVeytown, Pa. 17051

Rt 22 Strodes Mills  
Middle Rd. 1/4 mile

## TRAILER SUPPLIES



AXLES  
JACKS  
LIGHTS  
BEARINGS  
SPRINGS  
BRAKEAWAY KITS  
BRAKE PARTS  
SAFETY CHAINS  
COUPLERS  
Bumper  
Gooseneck  
FENDERS  
WHEELS  
PINTLE EYES

### Hostetler Truck Bodies & Trailers PARTS DEPARTMENT

Box 577, Milroy, Pa. 17063 • 1-800-441-5161

# Big Bargains At Pennsylvania's TRUCK HEADQUARTERS



TOLL-FREE  
HOTLINE  
1-800-642-8605



ALWAYS OVER 100 TRUCKS IN STOCK

**'90 F-350 4x4 CAB & CHASSIS**  
7.3L Diesel, 5 Spd., PS, PB, 11,000 GVW, Limited Slip Axle, Tach, Light/Conv. Group, XL Trim, Handling Pkg. #F1624  
**\$16,978**

**'90 ISUZU NRR CAB & CHASSIS**  
154 HP Diesel, 5 Spd, PS, PB, 33 gal. fuel tank, tilt, radial tires, more, #3072.  
**\$18,622**

**'89 FORD LN8000 CAB & CHASSIS**  
210 HP Diesel, 5 Spd, 2 Spd. Rear, Stainless Mirrors, Tinted Glass, 33,000 GVW, AM/FM, PS, Air Brakes, MUST GO, #8078.  
**\$29,982**

**'90 FORD F-150 4x2**  
6 cyl., 5 spd., OD, PS, PB, AM/FM, Radials, Low Mount Mirrors, Handling Pkg., Argent Styled Wheels, H.D. Service Pkg., Rear Step Bumper, Aux. Fuel Tank #F1140.  
**\$9,741**

**'90 F-350 4x2 CAB & CHASSIS**  
460 V8, 5 Spd, PS, PB, AM/FM, 11,000 GVW, Handling Pkg. Tach, Limited Slip Rear, H.D. Service Pkg., All Terrain Tires, XL Trim, Interval Wipers #F1553  
**\$13,972**

**'90 F-SUPERDUTY CAB & CHASSIS**  
460 V8, 5 Spd, PS, PB, 14,500 GVW, Tach, Super Engine Cooling, Aux. Fuel Tank, Headliner/Insul. Pkg., #F1136.  
**\$14,459**

Prices include Ford Rebates if Applicable, Tax & Tags Additional.

# NEW HOLLAND



ROUTE 23 NEW HOLLAND PA • SALES (717) 354-4901 TOLL FREE 1-800-642-8605 PARTS HOTLINE 1-800-367-3232  
HOURS: MONDAY THRU FRIDAY 8am-9pm SATURDAY 9am-5pm