

Public Auction Register

Closing Date Monday 5:00 P.M.
of each week's publication

SAT. APR. 28 - 9AM Sharp, Int'l Gas & Dsl. Tractors, Int'l 1600 Loadster Truck, Full Line of Farm Equip., Tools, Hereford Beef Cattle, HH, at Auction Facilities located 3 1/2 mi NW of Taneytown, Carroll Co., MD at 3755 Baptist Rd., Forrest Ricketts, owner, Amoss and Amoss, Auctions.

SAT. APR. 28 - 9AM, Furniture, Antiques, Tractors, Tools, located from Mt. Zion Rd. turn E. onto Druck Valley Rd., follow past Knaub's Orchard to sale on right, Harold Auchey, owner, Blaine and Nevin Rentzel, Auctions.

SAT. APR. 28 - 9AM Sharp! Antiques, Winross Trucks, HH Items, at Brickerville Fire Hall just off of Rt. 322 W. of Ephrata in the Village of Brickerville, PA, Paul Snyder, Agent for Owners and Auct.

SAT. APR. 28 - 9AM, Shop and Office Equip. and Parts, located from Rt. 15 take Rt. 74 N. to first crossroad, turn left follow to sale on right, York Co., PA, Dillsburg Garage, Lester Hertzler, owner, Lamar Z. Sensesig and Rick Forman, Auctions.

SAT. APR. 28 - 9:30AM, Guns, Pistols, etc., in the Shermansdale Ambulance Building, in Shermansdale, Perry Co., PA, Mrs. Robert E. Bupp, owner, Ed Stull, Auct

SAT. APR. 28 - 10AM, Antiques, 13 Acres Plus Farnette, located in W Sadsbury Twp., Parkesburg RD, Clara Crosson, owner, Ira and Dale Stoltzfus, Auctions.

SAT. APR. 28 - 10AM, Gun Auction, at Rt 40 W., I-70 Exit 4, Washington, PA, Shook's Auction Service, Randy L Shook, Auct

SAT. APR. 28 - 10AM, Real Estate Auction, at Rt 49 Harrison Valley, Potter Co., PA, Randy Jellif Auction Service., Auct

SAT. APR. 28 - 10AM, Antiques, HH, Yard & Garden Equip., Horse Harness, Buckles, Equip., etc., at 1318 Broadway, Rt. 194, Hanover, PA, Elmer E. Markle Estate, Clair R. Slaybaugh, Auct.

SAT. APR. 28 - 10AM, Real Estate, 10 Acre Farnette, located approx. 10 mi. W. of Allentown, PA, Dale Eldrid, owner, Ralph W. Zettlemoyer Auction Co., Inc., Auctions.

SAT. APR. 28 - 10AM, Farm Machinery, Few HH Goods, in Upper Pottsgrove Twp., Montgomery Co., PA, Shirley Theis, owner, Nelson C. Weidenbaugh, Auct.

SAT. APR. 28 - 11AM, 80 Acre farm & 2 bldg. lots, Stone Farmhouse, Frame

Barn and other out bldgs., located near Hamburg, William and Kim Byassee, owners, Horning Farm Agency, Inc., Auctions.

SAT. APR. 28 - 2PM, Real Estate, 3 Multi Use Properties, 96 East Ave., US Rt. 6 & Pierce St., Wellsboro, Tioga Co., PA, Kenneth A. Geyer Auction Co., Inc., Auctions.

SAT. APR. 28 - 5PM, Annual Consignment Farm Toy Auction, at the New Holland Fire Hall on 339 E. Main St., Dale Stoltzfus, Auct.

MAY TUES. MAY 1 - 6PM, Lawn Mowers & Garden Equipment, Diffsenbach's New Holland Auction Center, Ltd., 100 West Jackson St., New Holland, Pa. 17557, Diffsenbach's Auctions.

TUES. MAY 1 - 7PM, Commercial Lot located along Rt. 73, Pleasantville between Oley and Boyertown, Oley Twp., Berks Co., Paul Labe, owner, Horning Farm Agency, Auctions.

PUBLIC AUCTION

CHARLES W. WESSNER ESTATE

65 ACRE FARMETTE, ANTIQUES, GUNS, HUNTING LICENSES, HOUSEHOLD GOODS, RIDING TRACTOR, TOOLS



SAT., MAY 19, 1990 AT 9:00 A.M.

Located along Lutz Road, Greenwich Twp., Berks Co., PA. Traveling on old Rt. 22 between Allentown and Krumsville turn onto Lutz Road at the Highland Estate Trailer Park to the first farm. Approx. 15 miles West of Allentown or 2 miles East of Krumsville, just 2 miles off of I-78.

Real Estate consists of 65 acres, more or less, w/ approx. 50 acres of tillable ground, small pond, stream running through property and 1 mile + of road frontage whereon is erected a 2 1/2 story block and frame home, banked barn, 2 story 4-bay shed, 1 story 4-bay shed and other out buildings. The home has a large kitchen, 2 large rooms and full bath on the first floor, 6 rooms on the second floor, attic, basement and is heated with an oil hot water heating system. This property is in nice condition, located in a beautiful area and would be a nice horse farm. Real Estate inspection by appointment, call (215) 683-7023, (215) 770-9660 or (215) 683-7642. Terms are 10% down payment the day of auction, balance on or before 60 days. Real Estate will be offered at 12:00 Noon.

Auction Ordered By:
Stanley J. Wessner, Executor
Mary Alice Wessner, Executrix
Mary P. Conrad, Executrix
Lee A. Conrad, Attorney
Auctioneer:
Dennis F. Wagner
AU-001427-L
Phone: (215) 562-7445

JOHN P. HALPIN & SONS, INC.

Complete John Deere Business Liquidation Auction

FRI., APRIL 20 @ 9 A.M.
SAT., APRIL 21 @ 9 A.M.

Rt. 15, Henrietta, (Rochester) N.Y.
Farm Tractors - Combines
Machinery - Parts
Shop Tools

DIRECTIONS: The Auction will be held at the Halpins Headquarters, Rt. 15 and Lehigh Station Rd., Henrietta, N.Y.

SELLING: 23 FARM TRACTORS: JD 8640 w/duals; (2) 4630; 4030; 2240; 4620 4WD; 3010; 3020D P.S.: 300 Tractor Backhoe; IH 2400 w/loader; 986; 856; 84 Hydro; 806D; White 2-85 & others.

9 TRUCKS: 1989 Ford F350 w/17' Alum. Rollback; 1988 GMC 7000 w/22' Jerr Dan Rollback; 1981 F250; 1979 F350; 68 F600 w/16' body & hoist; 71 Ford 9000 Tandem Tractor & more.

14 COMBINES: (4) JD 6600 Diesel Combines; (2) JD 6600 Gas Combines; JD 4400 Diesel w/4WD & others.

13 PLANTERS: JD 7000 12 row liquid; JD 7000 8 row liquid; (2) 8 row dry; (4) JD 7000 6 row dry; (3) JD 7000 6 row liquid; JD 1250 6 row liquid; JD 1240 4 row dry.

HAY HARVEST: JD 347W baler; JD 467 wire; N.H. 275; NH 489 haybines; JD 1219 mower cond.; (2) 38 choppers; NH 3 row self propelled chopper.

TILLAGE: (2) JD 2700 6x18 plow; JD 970 24' S Tine cultimulcher, like new!; field cults.; Hesston 30' field cult.; Landoll 17' mulch tiller; cultimulchers; Rock picker & more.

IRRIGATION: Rain Reel System.

APPROX. 70 LAWN TRACTORS.

FROM THE SHOP & PARTS ROOM: metal parts shelves; (10) work benches; Floor Jacks; chain hoist; tractor splitting stands; engine stands; Hydraulic pump holder & repair equipment; Couplematic hose outfit; 40T shop press; 3 good forklifts; Dynamometer; corn planter test stand; high pressure washers; JD special service tool shop manuals & books; welder; torch outfit; painting equipment; vices.

SHOW ROOM CONTENTS:

USED PARTS, EQUIPMENT, & SCRAP: AUCTION SCHEDULE: April 20 - Toys, shop tools, used & new parts, shelving, display racks, office equipment, parts & scrap pile.

April 21 - 9:00 A.M. Lawn Equipment, 10:30 A.M. Trucks, 11:00 A.M. Farm Machinery, 12:30 P.M. Combines & Tractors.

No consignments accepted.

TERMS: Full settlement Auction day, CASH or GOOD CHECK. NO CREDIT CARDS, JOHN DEERE CREDIT OR HALPIN CREDIT WILL BE ACCEPTED.

OWNERS:
JOHN P. HALPIN & SONS
716-334-4150

Auctioneer: **Roy Teitsworth, Inc.**
6502 Barber Hill Rd.
Geneseo, NY 14454
716-243-1563



PUBLIC AUCTION

WEDNESDAY, APRIL 18, 1990
11:00 A.M.

FARM EQUIPMENT

LOCATED: Between Hanover & Sticks, Off Rt. 216, 1/2 Mile South of Lake Marburg or 1 Mile West of Manheim Elementary School. Watch for Signs.

J.D. 4430 Tractor, 4 Post Roll Bar, Dual Hydraulic, Quad Range, Wide Front; J.D. 6600 Side Hill Combine w/Diesel Motor Overhauled 1000 Hrs. Ago; J.D. 444, 4 Row Corn Head, 36" Rows; 1977 - C65 Chev. Truck w/18' Grain Body & Hoist, Tilt Hood, 5 Spd., 2 Spd. Rear; 1964 GMC w/Grain Bed & Hoist (farm Truck); J.D. 1600 - 12 Tooth Chisel Plow, Pull Type; J.D. 215 Dura Cushion Disc 12'6" w/Cleaners; J.D. 950 Cultimulcher - 15 ft.; J.D. 8300 Double Disk Drill 18 w/Grass Seed Box; 2 Knowles Metal Side Throwing Wagons w/8 Ton Wagon Gears; J.D. 870A Tank Spreader, Tandem Axle; New Idea 272 Conditioner; New Idea Avco 41' Elevator w/Elec. Motor; Vicon 4 Wheel 3 pt. Rake; J.D. 108 10' Rotary Mower; Grain Dryer, Butler Kan Sun, LP Gas, 10 hp; 6" Auger 50' w/Transport, 7/2 hp Elec. Motor; 275 Gal. Oil Tank; 2 - 12 Hole Stainless Fence Line Hog Heater; J.D. 4020 Power Shift, Diff. Lock, Dual Hydraulic, Narrow Front; J.D. 213 Flex Grain Head; J.D. 7000 Conservation Planter 4-36" Row, Liquid Fert., Lippy Coulters, Monitor; J.D. 2500 6x16 Hydraulic Reset Plow w/Hydraulic Hill Side Hitch; A.C. 2500 - 12 1/2 ft. Disc; Brillion 11' Cultipacker w/Transport; J.D. 24T baler w/#2 Throwing; AC 9 Row No Till Bean Planter w/Hopper Feed; Papec 870 Grinder Mixer; 7000 Bushel Grain Bin; King Wise 28' Elevator; Walsh 500 gal. Sprayer w/12 Row, Trailer Type; 500 Gal. Nurse Tank; 6" Auger 25' w/7/2 hp Electric Motor; 10T Feed Bin w/Slinger & Unload Auger; 5 hp Electric Motor (Rebuilt); 2 SS Pig Feeders.

(2 HOUR SALE) NO SMALL ITEMS (2 HOUR SALE)

TERMS: CASH OR GOOD CHECK.

MR. & MRS. CARL LANDIS
R.D. #2 Box 228, Brodbeck's, PA
717-229-2548

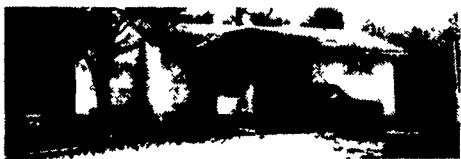
Auctioneers: Blaine & Nevin Rentzel
Emigsville, PA
717-764-6412
PA Lic. #761 & #2483

AUCTION

Year-Round Sullivan County Home Furnishings, Tools, Lawn Tractor

AT:
Box 204 Township Road 420 "Lake Road"
8 Miles North of Forksville
Elkland Township, PA
Saturday, April 21
10:00 a.m.

REAL ESTATE AT 11:00 A.M.



PROPERTY WILL BE SOLD TO THE HIGHEST BIDDER. NO MINIMUMS.

REAL ESTATE HIGHLIGHTS: 2 BR dwelling, barn, 5 acres, pond, close to State Game Land #12, choice hunting and fishing, excellent location.

PERSONAL PROPERTY will be sold individually and includes a nice selection of furnishings, tools, electric log splitter, Wheel Horse tractor and accessories, and appliances.

OPEN HOUSE: SATURDAY, APRIL 14
11:00 A.M. to 1:00 P.M.
and day of auction.

CALL FOR BROCHURE AND ADDITIONAL INFORMATION.



COMPLETE FARM AUCTION
ESTATE OF ELLERY DUNN
SAT., APRIL 14, 1990

11:00 A.M.

Symonds Hill Road, Addison, (Steuben Co.) New York
Sale to be held at the farm on Symonds Hill Road, just off the Borden Road (Steuben Co. Rd. #100), which runs south off State Rte. 417 about midway between Woodhull and Addison. From Rte. 417 take Borden Road south and take first right turn past National Fuel Gas pump station, 1st farm up hill.

Discontinuing farming, selling will be:

CATTLE: 60 Holsteins, Interstate Ready, including about 50 mature cows, Eastern bred with good udders; 3 bred heifers, 8 nice started heifer calves. Cattle will be pregnancy examined; inoculated against shipping fever; blood and t.b. tested. Truckers on site!

DAIRY EQUIPMENT: Mueller 800 gal. bulk tank, complete; DeLaval 2 in. s.s. pipeline milker system; 4 good DeLaval pipeline milker units; DeLaval vacuum pump with 3 h.p. motor.

MACHINERY: Nice Case IH 1594 tractor, R.O.P.S. canopy, 1016 hrs.; IH 674 diesel tractor, 5200 hrs.; JD 336 ejector baler; NH 469 haybine; 3 kicker wagons; NH 3 pt. sickle bar mower; 3 pt. bale spear; App. 28 ft. NH bale-grain elevator; 170 ft. mow conveyor; round bale feeder; NH Super 717 chopper with 1-row corn and hay pickup heads; Nice IH 120 3-beater s.u. wagon; IH 110 2-beater s.u. wagon; NH 25 blower; NH right hand barrel spreader; IH 56 4-row corn planter; IH #10 grain drill; Int. 540 4-16 semi-mt. plow; IH 350 12 ft. disk harrow; IH 401 12 ft. drag; just a few misc. items! Don't arrive late!

SALE ORDER: 1-Machinery; 2-Dairy Equipment; 3-Cattle.

TERMS: CASH or honorable check day of auction. Acceptable ID required!

Lunch available

Owned by **JUDITH D. DUNN**

Auction Conducted by:
James P. Pirrung
PIRRUNG AUCTIONEERS, INC.
Wayland, New York
716-728-2520