

Four States Livestock

Hagerstown, Md.
 Wednesday, April 4, 1990
 Report supplied by Auction
 SLAUGHTER COWS: UTILITY 48.00-54.00; HIGH DRESSING UP TO 57.00; CANNERS 46.00-50.00; SHELLY 46.00 DOWN
 BULLS: 1 1,315 LB. AT 66.50.
 FED STEERS: HIGH CHOICE TO PRIME 1200-1400 LBS. 79.00-81.75; CHOICE 1200-1500 LBS. 77.00-79.00; SELECT 1500 LBS. 65.00-68.00.
 FED HEIFERS: SELECT TO LOW CHOICE 900-1100 LBS. 60.00-68.00.
 VEAL CALVES: CHOICE 150-300 LBS. 103.00-123.00; GOOD 85.00-100.00; CULLS 85-120 LBS. 70.00-78.00; 50-80 LBS. 64.00-70.00; WEAK AND ROUGH 64.00 DOWN.
 HOLSTEIN BULLS, #1: 85-125 LBS. 140.00-181.00; #2 80-110 LBS. 100.00-140.00.
 HOLSTEIN HEIFERS: 100-125 LBS. UP TO 170.00; BEEF X BULLS UP TO 162.50; HEIFERS UP TO 130.00.
 BUTCHER HOGS: #1 AND 3 215-260 LBS. 52.00-52.75.
 SOWS: 350-500 LBS. 43.00-47.75; 500-700 LBS. 50.00-52.00.
 BOARS: 43.00-44.75.
 STOCK CATTLE, STEERS: 200-300 LBS. 90.00-110.00; 300-500 LBS. 85.00-101.00; 500-700 LBS. 75.00-88.00; 700-950 LBS. 63.00-70.00.
 HEIFERS: 300-500 LBS. 75.00-83.00; 500-700 LBS. 65.00-81.00; 700-900 LBS. 60.00-70.00.
 HOLSTEINS: 200-400 LBS. UP TO 96.00; 400-700 LBS. 65.00-85.00.
 BULLS: 200-300 LBS. 90.00-113.00; 300-500 LBS. 80.00-100.00; 500-700 LBS. 75.00-86.00.
 DAIRY REPLACEMENTS, SPRINGERS, LARGE 900.00-1135.00; FRESH 650.00-900.00; SERVICE BULLS, LIMOUSIN 760 LBS. AT 80.00; SHORTHORN 1130 LBS. AT 59.00.
 LAMBS: CHOICE AND PRIME 50-60 LBS. 82.00-87.00; 60-90 LBS. 70.00-77.00; 90-115 LBS. UP TO 72.50.
 GOATS: MEDIUM 55.00-67.00; SMALL UP TO 37.00.
 PIGS AND SHOATS, BY THE HEAD. 30-50 LBS. UP TO 42.00; 50-75 LBS. UP TO 59.00; BY THE POUND, 100-140 LBS. UP TO 55.00.
 STOCK BOARS: 215-260 LBS. 42.00-46.50.
 NOTE: NEXT WED., APRIL 11, SPECIAL FEEDER CATTLE SALE. ALREADY PROMISED 1 PUREBRED SIMMENTAL BULL 900 LBS., 15 HOLSTEIN HEIFERS 400-700 LBS.

Morrisons Cove Livestock

Martinsburg, Pa.
 April 2, 1990
 Report supplied by auction
 CATTLE 290. STEERS: H. CHOICE & PRIME 72.50-78.50, CHOICE 70.00-72.25, GOOD 64.50-69.50, STANDARD 58.50-63.50. HEIFERS: CHOICE 71.00-73.50; GOOD 62.50-69.50.
 COWS: UTILITY & COMMERCIAL 54.00-58.25; CUTTERS 51.00-53.75, CANNER & LOW CUTTER 43.00-50.50.
 BULLOCKS: GOOD & CHOICE 62.50-66.75.
 BULLS: YIELD GRADE NO. 1 61.50-66.25.
 FEEDER CATTLE: STEERS GOOD 68.50-107.00, BULLS 64.00-102.00; HEIFERS 58.50-86.50.
 CALVES 195. PRIME 105.00-118.50; CHOICE 96.00-103.50, GOOD 91.00-94.50, STANDARD & GOOD 82.00-90.50, 90-110 LBS. 74.50-91.00, 65-90 LBS. 62.00-78.50, HOLSTEIN BULLS 90-130 LBS. 112.00-152.50, HOLSTEIN HEIFERS 90-130 LBS. 92.00-150.00.
 HOGS 153. US NO. 1-2 51.50-52.75, US NO. 1-3 49.00-51.00.
 SOWS: US NO. 1-3 41.00-51.25.
 BOARS 40.00-43.50.
 FEEDER PIGS 46. US NO. 1-3 20-35

LBS. 18.50-34.50 PER HEAD, NO. 1-3 35-50 LBS. 36.00-47.50 PER HEAD.
 SHEEP 192. FOR EASTER TRADE, CHOICE SPRING LAMBS 140.00-205.00; GOOD 70.00-105.00; SLAUGHTER EWES 18.00-37.50.
 GOATS: 24.00-68.00.
 27 LOADS OF HAY, 36.00-180.00.
 1 LOAD OF STRAW, 66.00.

Oklahoma City Feeder Cattle

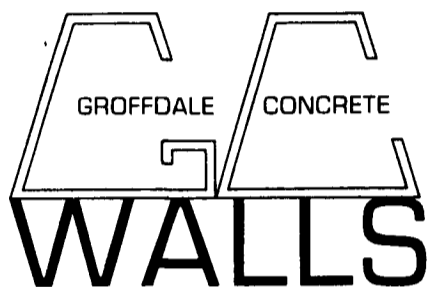
Oklahoma City, Okla.
 Wednesday, April 4, 1990
 OKLAHOMA NATIONAL STOCKYARDS WEEKLY CATTLE SUMMARY COMPARED WITH LAST WEEK: FEEDER CATTLE AND CALVES FIRM TO \$2.00 HIGHER. DEMAND MODERATE FOR FEEDER CATTLE. DEMAND VERY GOOD FOR STOCKERS AND CALVES. STOCKER PERCENTAGE IN THE RUN INCREASED THIS WEEK; ALSO SOME THIN CATTLE UP TO 735 LBS. CONTINUE BEING SHIPPED BACK TO PASTURE. OVERALL QUALITY LESS ATTRACTIVE THAN MARCH OFFERINGS WITH AN INCREASED PERCENTAGE IN THE MIXED NO. 1-2 AND LOWER HALF OF THE NO. 1 GRADE. SLAUGHTER COWS STEADY TO \$.50 LOWER. COW DEMAND CLOSED GOOD; SUPPLY LIGHT. BEST OUTLETS FOR CUTTERS; VERY WIDE SPREAD BETWEEN THE CUT-

TER AND UTILITY CARCASS PRICE. TWO-THIRDS OF COW NUMBERS TO PACKERS; ONE-THIRD TO THE COUNTRY. SLAUGHTER BULLS \$1.00-\$2.00 LOWER. RECEIPTS THIS WEEK 8,175; LAST WEEK 6,434; LAST YEAR 12,491. RUN INCLUDED 65% YEARLINGS; 30% CALVES & LIGHT STOCKERS; 5% COWS & BULLS.
 FEEDER STEERS: MEDIUM & LARGE FRAME 1, 225-275 LB. \$130.00-\$135.00; 275-350 LB. \$117.50-\$126.00; 350-425 LB. \$111.50-\$117.25, NEW CROP \$106.50-\$112.00; 425-500 LB. \$105.00-\$113.00; 500-550 LB. \$99.75-\$104.25; 550-600 LB. \$93.00-\$99.50; 600-650 LB. \$88.50-\$94.50, THIN \$92.00-\$96.50; 650-700 LB. \$84.75-\$89.50; 700-750 LB. \$82.50-\$87.25; 750-800 LB. \$80.00-84.00; 800-875 LB. \$79.00-\$83.00; 875-975 LB. \$76.75-\$79.00. HOLSTEINS: 275-325 LB. THIN \$106.00-\$108.00; 405 LB. \$93.00; 450-475 LB. \$84.00-\$84.50; 525-575 LB. \$79.50-\$83.25; 700-750 LB. \$71.25-\$73.00; 845 LB. \$68.25.
 FEEDER HEIFERS: MEDIUM & LARGE FRAME 1, 225-300 LB. \$106.50-\$109.50; 300-400 LB. \$99.75-\$105.25; 400-450 LB. \$93.00-\$101.00; 450-500 LB. \$90.00-\$97.00; 500-550 LB. \$86.25-\$92.00; 550-600 LB. \$84.75-\$89.00; 600-650 LB. \$80.75-\$85.00; 650-700 LB. \$79.00-\$82.50; 700-775 LB. \$77.50-\$80.25.

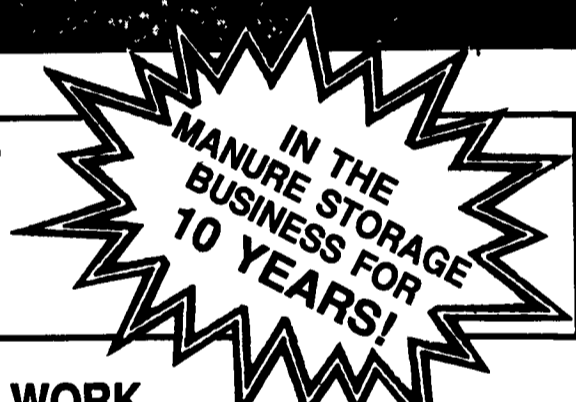
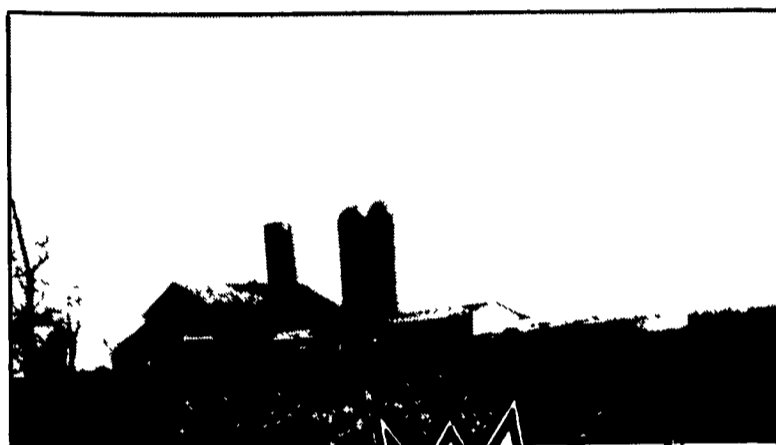
\$77.50-\$80.25.
 SLAUGHTER COWS: CUTTER, BONING UTILITY, FEW BREAKING UTILITY Y.G. 1-3 AVERAGE DRESSING \$52.75-\$56.50; HIGH DRESSING \$55.00-\$58.00; LOW- DRESSING \$49.50-\$53.00.
 SLAUGHTER BULLS: Y.G. 1 1150-2025 LB. AVERAGE DRESSING \$62.00-\$65.25; HIGH DRESSING \$66.00-\$68.00; HIGH BONING & DRESSING IND. \$70.50, LOW DRESSING \$59.50-\$62.00.

Peoria Cattle

Peoria, Illinois
 Monday, April 2, 1990
 Receipts This Week 124
 Last Week 119
 COMPARED WITH LAST WEEK, COWS AND BULLS MOSTLY STEADY. NOT ENOUGH FEEDER CATTLE FOR A MARKET TEST.
 COWS: BREAKING UTILITY AND COMMERCIAL 2-4 46.50-55.00 CUTTER & BONING UTILITY 1-2 47.00-55.50 FEW HIGH DRESSING 56.00-58.00 CANNER AND LOW CUTTER 1-2 41.50-46.50.
 BULLS: FEW YG 1-2 1235-2000 LBS. 55.50-71.50.
 FEEDER CATTLE: BULLS: LOT MEDIUM FRAME #2 484 LBS. 87.50 HEIFERS: LOT MEDIUM FRAME #2 416 LBS. 85.25.



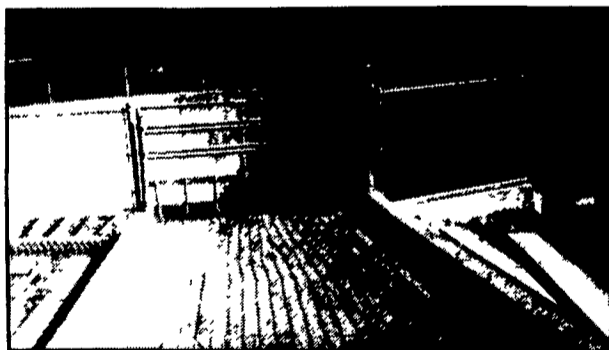
INC.
 148 Brick Church Road
 Leola, PA
 717-656-2016



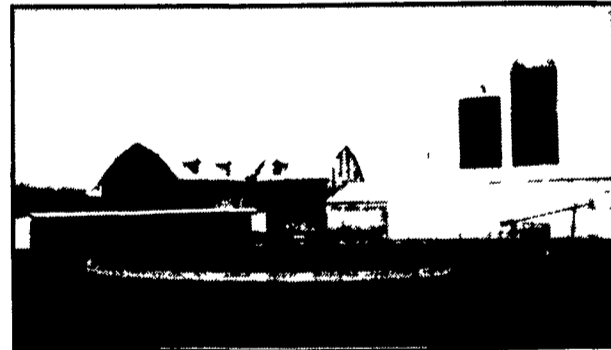
Thanks To The Farmers Who Made It Possible For Us To Build 40 Circular Manure Storage Tanks In 1989!

LET OUR 10 YEARS EXPERIENCE WORK FOR YOU! WE ORIGINATED THE CONCRETE SYSTEM!

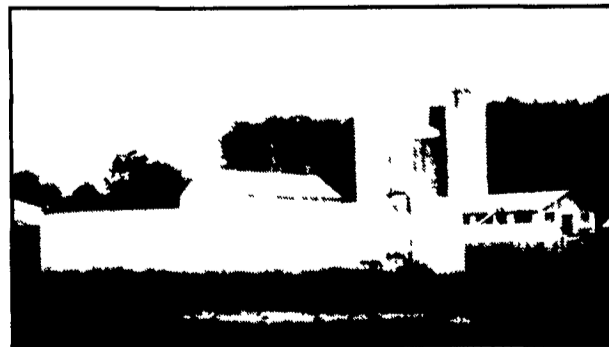
- WORKING WITH FARMERS WITH CHESAPEAKE BAY FUNDING -



FEATURING TRACTOR GUARD FOR SCRAPING FEED LOT



IN-GROUND MANURE STORAGE SYSTEM



ABOVE-GROUND MANURE STORAGE TANK WITH SIDE-MOUNT PUMP



PARTIAL IN-GROUND TANK FEATURING COMMERCIAL CHAIN LINK FENCE (5' High - SCS Approved)

Our Sales Tool Is A Satisfied Customer - Call Us For Information!

WE'RE NOT SATISFIED UNTIL YOU ARE!

SIZES AND LAYOUTS TO YOUR SPECIFICATIONS!

The Air Tool Center

Clarke Air Saw Model #BP-700A Factory Built!



Sale \$155.00 ppd
 24 tooth 7/8"
 Carbide Blades \$11.75 ea.
 40 Tooth Blades \$17.90

Built to work

#AP-527
 500 RPM
 REVERSIBLE
 DRILL



Has all the power you need for drilling driving screws, honing cylinders etc Comes with side handle and 1/2" chuck. 1 year warranty.

List Price \$169.00
 Special \$109.00 ppd
 20 Pc. USA Drill Set
 1/16" to 1/2" \$37.50

Orders under 100.00 add \$2.00 for shipping in stock for prompt shipment. Send your ck today.

Beiler's Pneumatics

718 Vintage Rd., Christiansa, PA 17509
 Add 6% Tax Unless Exempt

BARN SPRAYING IS OUR BUSINESS

WE WHITEWASH OVER 1,000

BARN A YEAR USING
 ADVANTAGE FARM WHITE

- DRIES WHITE • NO WET FLOORS • IS COMPATIBLE WITH DISINFECTANT AND FLY SPRAYS
- DOES NOT RUB OFF EASILY
- WASHES OFF WINDOWS & PIPELINES EASILY

BARN CLEANING SERVICE
 AVAILABLE WITH
 COMPRESSED AIR

BEITZEL'S SPRAYING

Witmer, PA 17585

717-392-7227 or We will take work

Toll Free within 100 mile

1-800-727-7228 radius of

7:00 AM to 5:00 PM Lancaster

CERTIFIED COMMERCIAL

APPLICATORS LICENSED INSURED

★ Spraying Since 1961 ★