

3 SILOS AND UNLOADERS

(1) 24' Jamesway Ring-drive Unloader, good condition, complete less motor, \$1,200
717-776-3129

OSWALT Model 180 and 230
by J-STAR **TMR/HAY PROCESSORS**



These Oswalt Mixers do a better job of mixing and carry the industry's only five-year mixer warranty!

USED OSWALT EQUIPMENT

- 1 - 180 Trailer Mixer
- 2 - 1830 Stationary Mixers Completely Rebuilt
- 1 - 230 Trailer (2 years old) Excellent Condition

YOU WON'T BEAT OUR PRICES & SERVICE

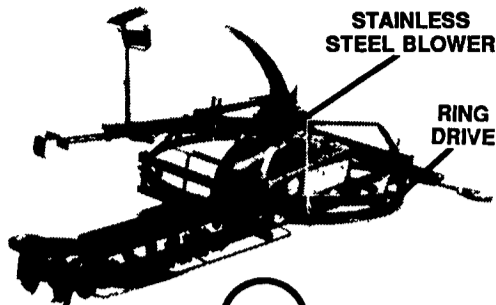


LAPP'S BARN EQUIPMENT

5935 OLD PHILADELPHIA PIKE, GAP, PA 17527

PHONE: 717-442-8134
— Radio Dispatched Trucks —

THIS IS THE BEST HAYLAGE SILO UNLOADER THAT MONEY CAN BUY!



We Service Any Brand Unloader

SPECIAL - New Model 2250 Knight Mixer - 173 Bu. \$13,800 (Demo)

USED EQUIPMENT

- Used 56" Blower, \$1200, Good
- Used Chuck Wagon, 3 Beater \$1,000
- VD Agitator Filler/Basin Pump Demo \$5,800
- 14' Patz Unloader, late model, very good shape
- Farmmaster 216 Portable Mixer - Special \$8,000
- Farm Gates 4', 8', 10', 12', 14', 16' In Stock
- 40 Ft. Jamesway Shuttle Feeder
- 125 HP VM Diesel Engine - \$1,000
- 18 HP 2 Cyl. Lister Starter & Alt. Rebuilt - \$1,200
- Knight 716 "Slinger" Spreader - New - \$9,300
- Farmmaster 40 cu. ft. mixer w/scales - \$900
- We have many rebuilt unloaders in stock

Lancaster Silo Co., Inc.

2008 Horseshoe Rd. • Lancaster, PA • (717) 299-3721

"Consider The Concrete Advantages"



3. Roof - The standard aluminized steel roof provides extra extra storage while also protecting the unloader and silage.
4. Concrete Chute - A solid 4" steel reinforced concrete chute is an integral part of the structure. This strong, durable chute has roomy inside dimensions of 24" wide and 28" deep. Also included is a side door for easy chute access.
5. Doors - The door system is an exclusive feature of Sollenberger Silos. The large 24" wide by 30" high door gives easy access to the silo. Doors are made of double ply, epoxy stapled, center matched, California Redwood for longer life and greater strength. Independently operating doors swing in and out for full use of the door opening. When closed, the doors from 16" steps for easy climbing.
6. Outside Ladder - With Safety Cage - Galvanized steel steps are cast directly into the silo wall, making an absolutely permanent, rigid ladder. Steps are conveniently spaced for safe, easy climbing.
7. Chute Dormer - This weather and rustproof aluminized steel dormer provides dry and protected access from the chute to the silo.
8. Filling Platform - Firmly attached to the silo, this 38" deep platform has a tilting bottom, allowing easy access to the platform.



MANURE STORAGE SYSTEMS

- Manure Storage Systems For The Small Herd - or The 400 Cow Herds And Larger.
- Systems Adaptable To Any Type Equipment
- SCS Approved
- Circular Tanks Poured-In-Place Above Ground - In Ground - Or Uneven Backfill.
- Pre-Cast Concrete panels Delivered And Set On Your Prepared Site.

1. Sollenberger Monolithic Silo - Solid 6" steel reinforced concrete walls are made of quality controlled 4,000 P.S.I. concrete. Smooth uniform diameter walls are ideal for optimum unloader operations. Greater strength and acid resistance gives you many extra years of service.
2. Reinforcing Steel - The reinforcing steel for every Sollenberger Silo is designed by a registered professional engineer, and in all cases meets or exceeds the standards set by the International Silo Association. 60,000 P.S.I. steel is placed both horizontally and vertically directly in the center of the wall where it is protected from weather and silage juices.

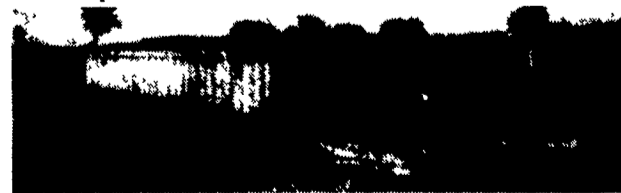


Let Us Know Your Needs. We Can Deliver From Our Large Inventory And Set On You: Prepared Site. OR: We Can Load On Your Truck To Help Save On Freight Costs. We Have Several Sizes And Styles To Choose From, Plus Metal Posts, For Cable, Which Can Be Bolted To The Bunk To Keep Cattle Out.

PRE-CAST BUNKER SILOS "THE ECONOMICAL CHOICE" STORAGE FOR ANY FORAGE

Also Suitable For Grain Storage, And Practically Any Other Bulk Material.

The Sollenberger Pre-Cast Bunker Silo Panel Is Designed To Be Free-Standing. With The Tongue and Groove Edges. It Can Be Coated With Mastic & Bolted Together To Give An Air-Tight Smooth Wall That's Easy To Pack And "Keeps Feed Good." Delivered And Set On Your Prepared Gravel Base.



NOW IS DECISION TIME FOR THE 1990 SEASON

Sollenberger Silos Corp.
Box N, Chambersburg, PA 17201

Please send information on:

- 1. Bottom Unloading Concrete Silos
- 2. Top Unloading Concrete Silos
- 3. Upright Bunker Silos
- 4. Manure Pits
- 5. Feed Bunks
- 6. Cattleguards
- 7. Industrial Silos/Tanks

Name _____
Address _____
City/State _____
Zip _____ Phone _____
Best Time To Call _____
County _____



Sollenberger Silos Corp.

A Nitterhouse Company
Box N Chambersburg, PA 17201 (717) 264-9588

SINCE BEFORE 1910

Office Number - 717-264-9588

For Upright Silos Call Bob Francis 717-532-6848 — Evenings —
For Bunker Silos & Manure Systems Call Tabb Justus or Mike Hair 717-762-8663 717-263-0792