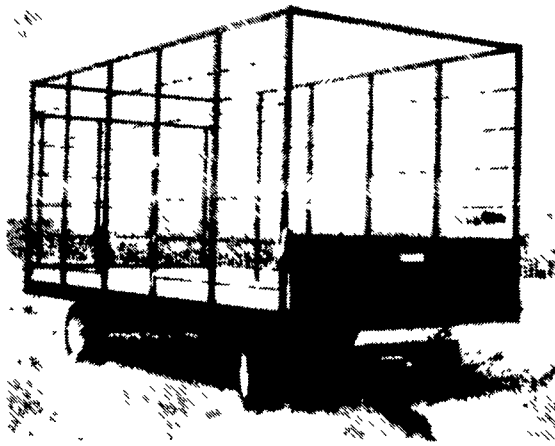


BALE WAGONS



Check These Features To See Why Our Wagons Are A Better Buy!

- Eight foot wide inside by eighteen feet long
- Rugged square steel tubing
- Fold down front gate w/diamond plate platform
- Swing out tailgate
- Unload from side, front or rear
- Solid oak floor
- Eight ton running gear w/universal bearings and extendable tongue with choice of wheels and tires
- Formed steel side rub rails

FOR INFORMATION & PRICES CONTACT YOUR LOCAL DEALER!

EDGAR F. DICKENSHEETS
New Windsor, MD
301-775-2909

C.B. HOOBER & SON
Intercourse, PA
800-732-0017

IRVIN L. GETZ
Mauretown, VA
703-436-3237

RICHARD E. KENWORTHY
Benardsville, NJ
201-647-2927

GANTHER HEUSSMAN INC.
Emmaus, PA
215-965-5203

REIFFS FARM SERVICE
Shippensburg, PA
717-532-8601

NORMAN CLARK & SON
Honey Grove, PA
717-734-3682

MARSHALL MACHINERY
Honesdale, PA
717-729-7117

LEBANON VALLEY IMP.
Richland, PA
717-866-7518

GLENN E. WAGONER
Darlington, PA
412-827-2904

JAMES E. BERGEN
Slate Hill, NY
914-355-4571

LONGENECKERS INC.
Williamsburg, PA
814-793-3731

PLAINFIELD AGWAY
Plainfield, CT
203-564-2779

COOK IMPLEMENTS
DeRugter, NY
315-852-9772

WILLARD CAMPELL
Penna. Furnace, PA
814-237-4573

ERB & HENRY EQUIP.
New Berlinville, PA
215-367-2169

KIMBALL FARM
Haverhill, MA
617-373-0816

NEW BEDFORD AGWAY
New Bedford, MA
800-696-3276

TOM WOTRING
Aurora, WV
304-735-3501

HOOBER EQUIPMENT
Middletown, DE
800-341-4028

LEADER'S FARM EQUIP.
Everett, PA
814-652-2809

C. PAUL JONES
Blairsville, PA
412-459-6656

LOGUE FARMS
Woodbury, CT
203-263-3071

Manufactured By

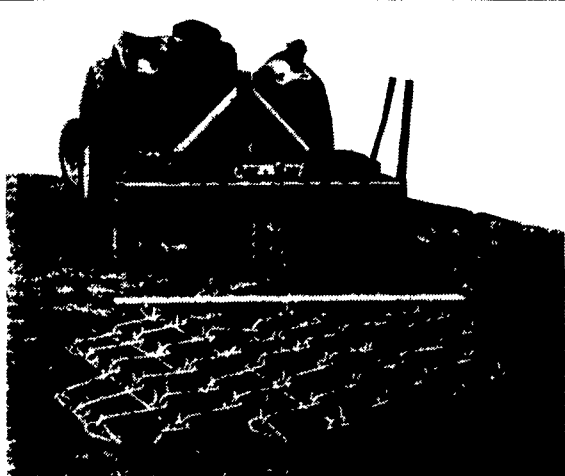
FARMCO MANUFACTURING

Manufacturing and Fabrication

2937 Irishtown Rd. • Bale Wagons
Ronks, PA 17572 • Cattle Feeders
• Wagon Gears

THE BETTER WAY

TO REVITALIZE THE SOIL AND INCREASE YIELD



The AER-WAY is an utility implement that can function as a rotary hoe, a disc, a roller and a harrow. It saves fuel, time and fertilizer. It increases water percolation, bacterial life and root growth. It is an implement for pastureland, grasslands, horse paddocks, general field crops, vegetable production, orchards, vineyards and turfgrass. The AER-WAY will increase your profits through lower costs and higher yields.



AerWay Aerators Ideal For:

1. Relieving Compaction
2. Aeration
3. Cultivation
4. Waterlogged Soil Relief
5. Erosion Control
6. Renovation

AerWay Chain Harrows Ideal For:

1. Spreading manure for parasite control
2. Preparing seed beds
3. Covering seed (esp. winter rye grass)
4. Incorporating herbicides
5. Harrowing in fertilizer on hay fields
6. Root raking, land leveling & landscaping

we want to HELP YOU GROW



Mon.-Fri.
7:30 AM to 5:30 PM

Sat.
7:30 AM to Noon



110 S. Railroad Ave. • New Holland, PA 17557 • 717-354-4731 OR 717-355-2122

USED EQUIPMENT



TRACTORS DISMANTLED FOR USED PARTS

Oliver 550
Oliver 77
Oliver 1650
Oliver 1955
Oliver 1750

TRACTORS

IH Cub w/Front Blade, 1 Bot. Plow & Center Mid. Mower
Case 350 w/6-Way Blade
Ford 8N Tractor

FORAGE
NH No. 23 Blower
NH 30 Blower
NH 718 2-Row Forage Harvester
Hesston 7020 w/2 Heads

TILLAGE & PLANTING

IH 455 4 row Planter
IH 400 4 Row Planter
Oliver Drag Type Harrow

GRINDER MIXERS

IH 1250 Grinder Mixer
NH 357

SPREADERS

NH 518 w/Hydraulic Endgate
NH 519 w/Hydraulic Endgate
NI 214 Single Btr. Hyd. Endgate

LAWN & GARDEN

Cub Cadet 102 w/36" Mower
Ford LT11 Lawn Tractor
Simplicity 4208 Lawn Tractor w/Mower
Simplicity 4212 Lawn Tractor w/Mower

HAY TOOLS

NH 275 Baler w/Thrower
IH 440 Baler w/No. 10 Thrower
JD 10 Side Mtd. Mower
Grimm Ground Drive Tedder

SPRAYERS

Welsh 3 Point

NORMAN D. CLARK & SON

Honey Grove, PA 17035
717-734-3682

Located 14 Miles South of Port Royal on Rt. 75

2nd Location — Loysville, PA — 717-789-3117 (Formerly Shover's)



Kuhn Fertilizer Spreaders For Greater Efficiency And Control

Kuhn twin disc spreaders feature even spreading patterns, quick cleaning hoppers, and stainless steel bottoms and shutters.

COMET ZSN SERIES

- Hopper Capacities — 800 to 2,400 lbs.;
- Widths — 32' to 49'
- 2, 4 or 6 row banding attachments.

COMET ZSB SERIES

- Hopper Capacities - 2,185 to 3,500 lbs.; Working Widths — 33' to 78'.
- 5:1 disc to agitator ratio.

Many Sizes In Stock Now!



Kuhn Power Tillers Built to take on any job. From stubble cleaning to orchard cultivation, this is one tough tiller!

- **ADJUSTABLE DEPTH** - front mounted gauge wheels allow choice of working depths
- **NO MAINTENANCE** - all gear construction eliminates troublesome chains, downtime
- **CHOICE OF SIZES** - for 12-140 h.p. tractors in working width of 30" - 120"
- **VERSATILE** - for landscapes, nurseries, commercial gardening, vineyards and orchards, stubble cleaning, crop residues and more

★ **LARGEST "IN STOCK" SELECTION EVER** ★

Call Now For Best Prices!

When the game is profits, Kuhn will help you win.



Mon.-Fri.
7:30 AM to 5:30 PM
Sat.
7:30 AM to Noon



110 S. Railroad Ave. • New Holland, PA 17557 • 717-354-4731