

New Wilmington Livestock Auction

N. Wilmington, Pa.
Monday, April 2, 1990
Report Supplied by PDA

CATTLE 268...PDA...Compared with last Monday's market: Slaughter cows .50 to 1.00 lower. Few Select and low Choice slaughter steers 70.00-76.50; few Choice Holsteins 67.75-69.00, few Standard 64.75-67.75. Few Choice sl. heifers 70.25-74.00, few Select 68.00-70.25, few Standard 58.00-62.00. Breaking Utility & Commercial sl. cows 50.00-54, few 54.50-55.75, low yielding down to 46.50, Cutter & Boning Utility 47.50-52.25, high yielding 53.50, Canner & Low Cutter 41.50-47.50, Shells down to 38.00. Yield Grade No. 1, 1145/1915 lbs sl. bulls 61.25-66.00, couple No. 2, 1200 and 1090 lbs 59.25 and 60.00 Feeder Cattle: Few Medium & Large Frame #1, 515/690 lbs. steers 70.00-80.00, few 790/1000 lbs. 60.00-67.50 Med. & Large Frame No. 1, 315/475 lbs. heifers 74.00-88.25, 520/760 lbs 64.00-76.00

CALVES 276...Few Good vealers 95.00-102.50, Standard & Good 90/120 lbs. 68.00-73.00, 60/85 lbs. 50.00-65.00, Utility 45/60 lbs. 40.00-50.00. Farm Calves: Hol. Bulls 90/135 lbs. 120.00-182.00, No. 2, 80.00-130, lot 85 lbs. 100.00; Hol. Heifers 85/120 lbs. 112.50-160.00; Beef cross 75/150 lbs. bulls & heifers 85.00-135.00.

HOGS 405...Barrows and gilts .25 to .50 higher. US No. 1-2 230/255 lbs. 52.50-53.25, 1-3 215/260 lbs. 51.10-52.50, lot 2-3 300 lbs. 43.25, 1-3 190/210 lbs. 47.50-51.00. Sows steady. US No 1-3 320/650 lbs sows 45.00-51.50, fw 2-3 330/560 lbs 41.00-44.25. Boars 38.00-43.00.

FEEDER PIGS 16. Few US No. 1-3 105/125 lbs feeder pigs 37.00-42.00-cwt
SHEEP 596 High Choice & Prime 30/45 lbs spring slaughter lambs 80.00-107.50, 45/60 lbs. 75.00-105, lot 111.00, 65/85 lbs 68.00-88.00, Good & Choice 20/40 lbs 60.00-80.00, 40/70 lbs 70.00-78.00, Good & Choice 80/95 lbs wool lambs 60.00-70.00 Slaughter sheep 10.00-30.00.

GOATS 29 Large 50.00-79.00,

Medium 30.00-49.00, Small 15.00-22.00 --- all per head.

Dewart Livestock Auction

Dewart, Pa.
Monday, April 2, 1990
Report Supplied by PDA

CATTLE 51...PDA...Compared with last Monday's market: Slaughter cows about steady. Couple Choice Holstein steers 67.00&69.50. Breaking Utility & Commercial sl. cows 48.75-52.50, Cutter & Bon. Utility 48.75-53.00, few Canner & Low Cutter 45.00-47.7, Shells down to 40.00. Couple Yield Grade No. 1, 1400 lbs. sl. bulls 63.00 and 1160 lbs. 69.00.

CALVES 153...Couple Choice vealers 118.00&128.00, few Standard & Good 70/95 lbs. 65.00-70.00, few Utility 60/80 lbs. 55.00-65.00. Farm Calves: Holstein Bulls No. 1, 90/130 lbs. 130.00-170.00, No. 2, 80/120 lbs. 74.00-130.00; Hol. Heifers 90/130 lbs. 128.00-168.00.

HOGS 43...Few Lots US 1-3 230/240 lbs. barrows and gilts 53.20-53.80 US No 1-3 360/430 lbs. sows 43.75-45.25. Few Boars 35.00-41.75.

FEEDER PIGS 33.Few US No. 1-3 20/25 lbs. feeder pigs 33.00-43.00 - per

head.
SHEEP 15...Few Choice 25/50 lbs. new crop lambs 125.00-155.00, few 55/95 lbs. 71.00-80.00.

GOATS 25...Few Large 49.00-85.00, few small Kids 27.00-53.00.

Eighty-Four Livestock Auction

Eighty-Four, Pa.
Monday, April 2, 1990
Report Supplied by PDA

CATTLE 238...PDA...Compared with last Monday's market. Slaughter cows fully steady Few Choice slaughter steers 74.00-76.00, Select 68.50-72.50, few Standard 61.00-65.00, few Utility 56.00-60.00 Couple Choice sl heifers 71.00&72.00, few Select 66.00-69.00, few Standard 59.00-62.00 Breaking Utility & Commercial sl cows 51.50-56.50, couple high yielding 58.50, Cutter & Boning Utility 48.50-53.00, Canner & Low Cutter 42.50-49.00, Shells down to 37.00 Yield Grade No. 1, 1400/2015 lbs sl. bulls 60.00-67.00, few No. 2, 1000/1300 lbs

50.00-55.00. Feeder Cattle: Medium & Large Frame #1, 220/300 lbs. steers 86.00-115.00, 400/500 lbs. 73.00-84.00. Medium Frame #1, 280/450 lbs. heifers 75.00-90.00. Medium & Large Frame No. 1, 250/325 lbs. bulls 82.00-102.00.

CALVES 172.Few Choice vealers 110.00-118.00, one Prime 129.00, Good 95.00-106.00, Standard & Good 90/120 lbs. 69.00-76.00, 60/85 lbs. 60.00-71.00, few Utility 45/65 lbs. 45.00-60.00. Farm Calves: Hol. Bulls 90/130 lbs. 105.00-165.00, few 180.00, 80/85 lbs. 80.00-104.00; Hol. Heifers 90/125 lbs. 81.00-130.00 Beef cross 80/115 lbs. 80.00-160.00.

HOGS 97.Barrows and gilts steady to strong. US No 1-3 250/255 lbs. 51.25-52.00, 1-3 215/245 lbs 50.00-51.00, 2-3 215/240 lbs 48.25-49.75 US No. 1-3 325/600 lbs sows 42.00-48.00 Boars 35.00-44.00.

FEEDER PIGS 13.One small lot US No 2-3 49 lbs feeder pigs 32.00, few No. 3, 22/36 lbs. 27.00-29.00 --- all per head.

SHEEP 2486 High Choice & Prime 30/40 lbs spring slaughter lambs 108.00-129.00, lot 30 lbs. 141.00, 40/50 lbs 99.00-110.00, 50/60 lbs 85.00-100.00, 60/75 lbs. 79.00-90.00, 80/95 lbs. 70.00-83, Choice 50/65 lbs. 74.00-87.00, 65/75 lbs. 66.00-76.00, Good 15/25 lbs. 75.00-97.50, 30/40 lbs. 70.00-78.00, Choice 75/85 lbs. feeder lambs 60.00-65.00 Slaughter sheep 17.00-26.00.

GOATS 106...Large 52.00-67.50, Medium 40.00-50.00, Large Kids 55.00-58.00, Small 20.00-37.00 --- per head

North Jersey Livestock

Hackettstown, NJ
Tuesday, April 3, 1990
Report supplied by auction

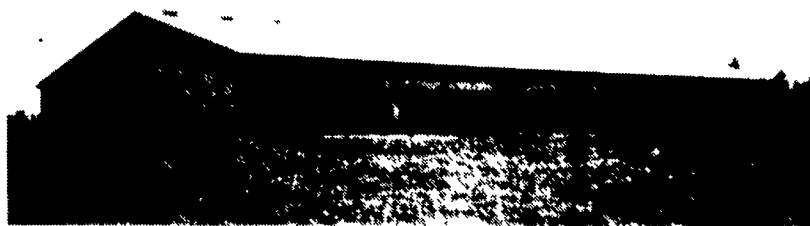
CALVES .09-1.70.
COWS 24-.62%.
EASY COWS 20-.52.
HEIFERS 46-.70.
BULLS 54-.71.
STEERS 60-.75%.
HOGS 38-48%.
SOWS 42-44%.
ROASTING PIGS, EACH 35.00-41.00.
BOARS 25-.39%.
SHEEP 05-.50.
LAMBS, EACH 5.00-80.00.
LAMBS PER LB. 35-.96
GOATS EACH 20.00-95.00.
KIDS EACH 8.00-68.00.
HIDES EACH 25.00-30.00
TOTAL 2059.

Smucker Construction

6086 Beaver Dam Road
Narvon, Pa. 17555
717-768-8606

Ans. Serv. 717-354-4374

Call or write for a free estimate on the building of your choice



60x104 w/30' Stable Area

90x232 Arena

Construction and Custom Design of:



- Arenas
- Horse Barns
- Dairy Barns
- Storage Buildings

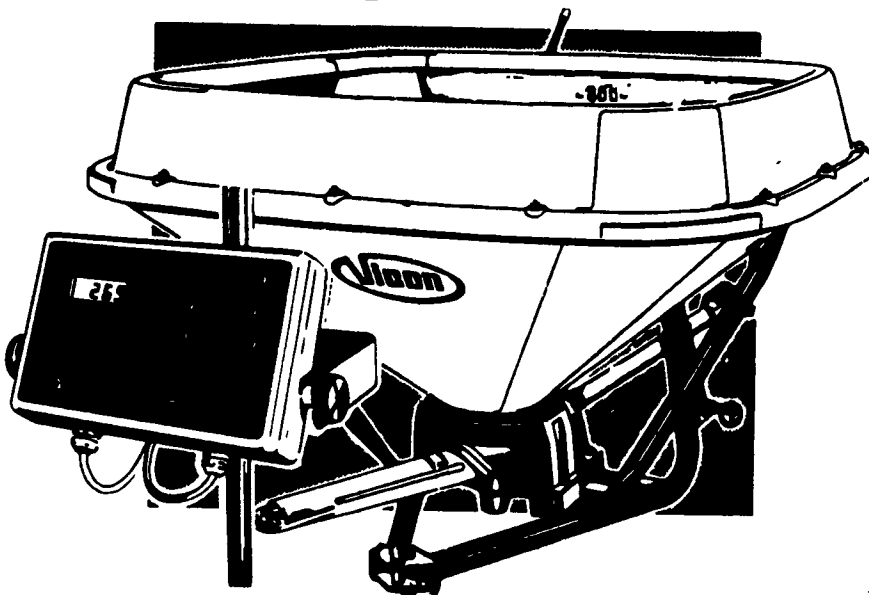


Super Flow Seeder Spreaders. First by choice.

Vicon seeder spreaders lead the field. They've been the farmers first choice for years.

And now the new SuperFlow range puts new technology to work to give you even more accuracy, more versatility, more reliability and a wider range of capacities.

Add the new Varimeter, Vicon's electronic application rate control system, to increase yields and save costs. Available on all models.



See One Of These Dealers Now...

Pennsylvania Dealers

ERB & HENRY EQUIP., INC.
New Berlinville, PA
One Mile North of Boyertown
215-367-2169

MELVIN J. SHEFFER, INC.
121 Railroad St.
Hanover, Pa.
717-637-3808

STOFFER BROS.
1066 Lincoln Way West
Chambersburg, Pa.
717-263-8424

Maryland Dealers

ELLIOTT EQUIP. & HARDWARE
Rt. 328 & Elliott Rd.
Easton, MD
301-822-8866

TRIPLE H EQUIPMENT
RD 1 Box 141
Peach Bottom, Pa.
717-548-3775

M.M. WEAVER & SONS
169 N. Groffdale Rd.
Leola, Pa.
717-656-2321

WENNER FORD TRACTOR
Route 202
Concordville, Pa.
215-399-8815

H.B. DUVALL
901 East Patrick St.
Frederick, MD
301-662-1128
(Outside MD) 1-800-423-4032

New Jersey Dealers

BEEMERVILLE EQUIP.
Rd 3, Box 810
Sussex, NJ
201-878-5672

REED BROS.
Petticoat Bridge Rd.
Columbus, NJ
609-267-3363

RODIO TRACTOR SALES, INC.
N. White Horse Pike
Hammononton, NJ
609-581-0141

SCHAPER BROS.
RD 8, Box 270
Bridgeton, NJ
609-455-1640

E.T. CLINE & SONS
510 E. Wilson Blvd.
Hagerstown, MD
301-739-2223

CRIPPLED AND DISABLED COWS, STEERS & BULLS

Slaughter Under USDA Inspection

FREE CALL
1-800-234-COWS (2697)
215-286-9400
Wayne Taylor

Lebanon, Berks,
Lancaster & Chester
Counties

FEED INGREDIENTS

We Want To Help You Reduce Your Feed Costs

WE SUPPLY

- 48% SOYBEAN MEAL
- ROASTED SOYBEANS
- DRIED CORN DISTILLERS
- MIXES

Call Us Today...

HERSHEY AG

(717) 653-8783 R D. #1, Box 139
1-800-544-4574 Marietta, PA 17547