



Diffenbach's New Holland Auction Center, Ltd.
 100 WEST JACKSON ST. • BOX 485 • NEW HOLLAND, PA. 17557
 PHONE (717) 355-7253 (717) 393-4464 (717) 354-3297



HAY SALE EVERY MONDAY- 10:00 A.M.

1990 SPECIAL SALES

MARCH 1990						
S	M	T	W	T	F	S
-	-	-	-	1	2	3
4	5	6	7	8	9	10
11	12	13	14	15	16	17
18	19	20	21	22	23	24
25	26	27	28	29	30	31

APRIL 1990						
S	M	T	W	T	F	S
1	2	3	4	5	6	7
8	9	10	11	12	13	14
15	16	17	18	19	20	21
22	23	24	25	26	27	28
29	30	-	-	-	-	-

MAY 1990						
S	M	T	W	T	F	S
-	-	1	2	3	4	5
6	7	8	9	10	11	12
13	14	15	16	17	18	19
20	21	22	23	24	25	26
27	28	29	30	31	-	-

JUNE 1990						
S	M	T	W	T	F	S
-	-	-	-	1	2	-
3	4	5	6	7	8	9
10	11	12	13	14	15	16
17	18	19	20	21	22	23
24	25	26	27	28	29	30

JULY 1990						
S	M	T	W	T	F	S
1	2	3	4	5	6	7
8	9	10	11	12	13	14
15	16	17	18	19	20	21
22	23	24	25	26	27	28
29	30	31	-	-	-	-

AUGUST 1990						
S	M	T	W	T	F	S
-	-	-	1	2	3	4
5	6	7	8	9	10	11
12	13	14	15	16	17	18
19	20	21	22	23	24	25
26	27	28	29	30	31	-

SEPTEMBER 1990						
S	M	T	W	T	F	S
-	-	-	-	-	1	-
2	3	4	5	6	7	8
9	10	11	12	13	14	15
16	17	18	19	20	21	22
23	24	25	26	27	28	29
30	-	-	-	-	-	-

OCTOBER 1990						
S	M	T	W	T	F	S
-	1	2	3	4	5	6
7	8	9	10	11	12	13
14	15	16	17	18	19	20
21	22	23	24	25	26	27
28	29	30	31	-	-	-

NOVEMBER 1990						
S	M	T	W	T	F	S
-	-	-	-	-	1	2
3	4	5	6	7	8	9
10	11	12	13	14	15	16
17	18	19	20	21	22	23
24	25	26	27	28	29	30

DECEMBER 1990						
S	M	T	W	T	F	S
-	-	-	-	-	-	1
2	3	4	5	6	7	8
9	10	11	12	13	14	15
16	17	18	19	20	21	22
23	24	25	26	27	28	29
30	31	-	-	-	-	-

- TUES. APR. 3..... 6:00 P.M. Lawn Mower & Garden Equipment
- TUES. & WED. APR. 17 & 18 9:00 A.M. Quilts, Crafts, & Buggies
- FRI. APR. 20..... 9:00 A.M. Farm Equipment & Supplies
- TUES. MAY 1..... 6:00 P.M. Lawn Mowers & Garden Equipment
- FRI. MAY 18..... 9:00 A.M. Farm Equipment & Supplies
- FRI. JUNE 15..... 9:00 A.M. Farm Equipment & Supplies
- SAT. JUNE 30..... 10:00 A.M. Bertha Shirk, Paradise. Real Estate, HH Goods & Antiques. (On the premises)
- FRI. JULY 13..... 9:00 A.M. Farm Equipment & Supplies
- TUES & WED, JULY 24 & 25 9:00 A.M. Quilts, Crafts, & Buggies
- FRI. AUG. 17..... 9:00 A.M. Farm Equipment & Supplies
- TUES. AUG. 28..... 6:00 P.M. Guns of all descriptions
- TUES. SEPT. 4..... 6:00 P.M. Lawn Mowers & Garden Equipment
- FRI. SEPT. 14..... 9:00 A.M. Farm Equipment & Supplies
- TUES. SEPT. 25..... 6:00 P.M. Guns of all descriptions
- SAT. OCT. 6..... 9:00 A.M. Camp Deer Park Benefit Auction
- FRI. OCT. 12..... 9:00 A.M. Farm Equipment & Supplies
- TUES OCT. 23..... 9:00 A.M. Quilts, Crafts, & Buggies
- FRI NOV. 9..... 9:00 A.M. Farm Equipment & Supplies
- SAT NOV. 24..... 9:00 A.M. Toys, Crafts, Gifts, & Tools

Contact Us For Rates
And Dates For Your Sale

ADD YOUR SALE TO THIS LISTING NOW!
 Diffenbachs Aucts. 225L
 Bonded Licensed Livestock Dealer and Order Buyer

Equipped And Ready
To Serve You

NEW HOLLAND SALES STABLES INC. THE ACTION AUCTION

Market Your Livestock Thru
New Holland Sales

Pick-Up Your Check
Before You Leave

LIVESTOCK IS OUR ONLY BUSINESS

MONDAY

SLAUGHTER HOGS

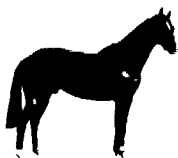


EARLY BIRD HOG SALE
7:30 A.M.

Sell Your Hogs At New Holland Sales Stables, Inc.
See them weighed, sold and pickup your check.

10:00 AM

HORSES MULES



PONIES

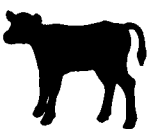


1:30 PM

BEEF SALE



SHEEP



CALVES

WEDNESDAY

DAIRY 11:00 AM COWS
COW SALE 12:00 NOON



We have the usual run of 50 to 100 Heifers, all ages.
Loads of fresh cows and springers from our regular shippers.
Also some local fresh cows and springers.

1:30 P.M.
FEEDER PIG SALE



Pigs are accepted after 6:30 A.M. State graded from 8 to 12
Dairy Barn and Feeder Pig Barn are cleaned and disinfected weekly for your protection.

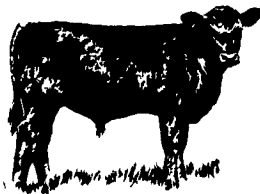
THURSDAY

Beef Auction
10:00 A.M.

BULLS
STEERS
BEEF COWS

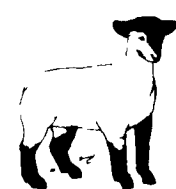


STOCKERS
&
FEEDERS



1:30 P.M.

SHEEP
GOATS
CALVES



NEW HOLLAND SALES STABLES, INC.

12 Miles East of Lancaster On Route 23, New Holland, Penna.

MANAGERS
Norman & David Kolb - 717-397-5538

Field Representatives
Luke Eberly - 215-267-6608 738-1865
Homer Eberly - 215-267-3047

Sale Barn Officer Manager
Roger Floyd - 717-354-4341

Order Buyer
Paul Good - 215-445-6662

Feeder Pig Representative
Mel Hoover - 717-354-8397