

Four States Livestock

Hagerstown, Md.
 Wednesday, March 28, 1990
 Report supplied by Auction
 SLAUGHTER COWS: UTILITY 50.00-55.00; HIGH DRESSING 55.00-57.75; CANNERS 48.00-53.00; SHELLY 48.00 DOWN
 BULLS: YG#1 66.00-71.00, YG#2 59.00-64.00
 FED STEERS: HIGH CHOICE 74.00-76.25; CHOICE 70.00-74.00; SELCT 65.00-72.00; STANDARD 58.00-65.00.
 FED HEIFERS HIGH CHOICE 72.00-74.25, CHOICE 67.00-72.00; SELECT 63.00-68.00
 VEAL CALVES: CHOICE 150-300 LBS. 105.00-120.00; GOOD 90.00-104.00; CULLS 85-120 LBS 70.00-78.00; 50-80 LBS 65.00-72.00, WEAK AND ROUGH 65.00 DOWN
 FARM CALVES, HOLSTEIN BULLS, #1 95-125 LBS 140.00-170.00, #2 85-110 LBS 100.00-140.00.
 HOLSTEIN HEIFERS: 120.00-136.00, BEEF X BULLS TO 150.00, HEIFERS TO 120.00
 BUTCHER HOGS US#1 AND 3 215-260 LBS. 50.50-51.50, #2 AND 3 49.00-50.00, 1 LOT 285 LBS AT 48.00
 SOWS: OVER 500 LBS TO 51.00, 350-475 LBS 42.00-45.25.

BOARS: TO 43.00.
 STOCK CATTLE, 375 HEAD.
 STEERS: 300-500 LBS. 80.00-101.00; 500-700 LBS. 75.00-92.00; 700-900 LBS. 65.00-76.00; LIMOUSINS TO 95.00, 900-1050 LBS. 63.00-72.00
 HEIFERS: 300-500 LBS. 73.00-85.00; 500-700 LBS. 65.00-85.00; 700-900 LBS. 60.00-72.00.
 BULLS: 300-500 LBS. 79.00-88.00, 500-700 LBS. 70.00-80.00; 700-900 LBS 60.00-70.00; SERVICE BULLS 1 LIMOUSIN 705 LBS. 83.00, SIMMENTAL 1085 LBS. 70.00; REGISTERED HOLSTEIN 1065 LBS. 98.00.

DAIRY REPLACEMENTS: SPRINGERS TO 1065.00.
 SHEEP: 22.00-29.00, YEARLINGS TO 37.50.
 GOATS: LARGE 67.00-75.00; MEDIUM 50.00-65.00; SMALL
 PIGS AND SHOATS: BY THE HEAD, 20-30 LBS. 25.00-35.00, 30-50 LBS 40.00-50.00, 50-70 LBS 45.00-58.00, BY THE POUND 150-180 LBS 45.00-48.00
 STOCK BOARS 215-260 LBS TO 45.50
 NOTE NEXT WED, APRIL 4, 10 PUREBRED HOLSTEIN HEIFERS 400-700 LBS DEHORNED AND 1 700 LB JERSEY BULL NEXT SPECIAL FEEDER CATTLE SALE WED., APRIL 11.

Westminster Livestock Auction

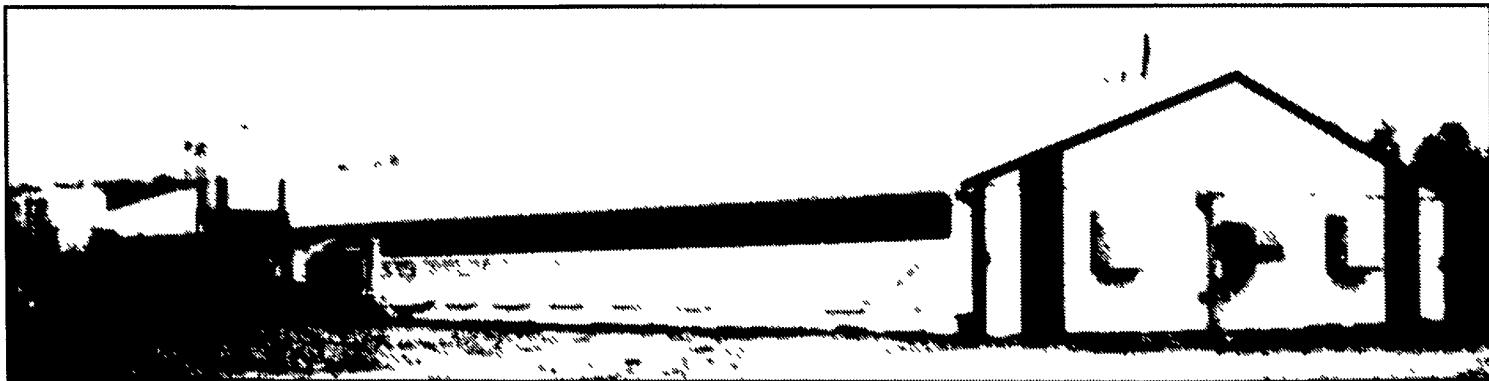
Hagerstown, Md.
 Tuesday, March 27, 1990
 Report supplied by auction
 COWS: UTILITY 50.00-55.00; LOW DRESSING 46.00-50.00; HIGH DRESSING TO 56.50; CANNERS 48.00-53.00; SHELLY 47.00 DOWN.
 BULLS: YG#1 1400-1800 LBS. 68.00-70.75; YG#2 1000-2200 LBS. 60.00-65.00.
 FED STEERS: LOW CHOICE 1000-1350 LBS. 73.00-74.50; SELECT 67.00-72.00; LOW CHOICE HOLSTEINS 1200 LBS. 70.50; STANDARD 57.00-66.00.
 FED HEIFERS: HIGH CHOICE TO PRIME 1000-1250 LBS. 71.00-73.75; CHOICE 68.00-71.00; SELECT 63.00-68.00; COMMERCIAL 55.00-62.00.
 VEAL CALVES: CHOICE 150-300 LBS 105.00-112.00; GOOD 90.00-104.00; CULLS 85-120 LBS. 68.00-78.00; 60-80 LBS. 60.00-70.00; WEAK AND ROUGH 60.00 DOWN.
 FARM CALVES, HOLSTEIN BULLS 10.00-15.00 HIGHER. #1 85-125 LBS. 125.00-139.00 #2 80-110 LBS. 85.00-120.00; HOLSTEIN HEIFERS OVER 100 LBS. UP TO 150.00; 80-95 LBS. 95.00-122.00; BEEF X HEIFERS TO 112.00.
 BUTCHER HOGS: US #1 AND 3 215-260 LBS. 51.25-52.75; #2 AND 3

50.00-51.00; 260-280 LBS. TO 50.00; 190-215 LBS. 47.00-49.50.
 STOCK CATTLE, STEERS: 300-500 LBS. 80.00-96.00; 500-700 LBS. 73.00-80.00; 700-900 LBS. 65.00-71.00.
 HOLSTEINS: 500-800 LBS. 66.00-73.00.
 HEIFERS: 300-500 LBS. 73.00-84.00, 500-700 LBS. 63.00-78.00; 700-900 LBS. 58.00-68.00.
 HOLSTEINS: 300-500 LBS. 70.00-85.00.
 BULLS: 300-500 LBS. 75.00-80.00; 500-700 LBS. 68.00-80.00; 800-900 LBS 58.00-63.00; HOLSTEINS 400-600 LBS. 59.00-69.00.
 LAMBS: NEW CROP 40-60 LBS 105.00-155.00; 60-80 LBS. 84.00-96.00, WOOLED 60-80 LBS. 68.00-73.00, CHOICE 80-110 LBS. 63.00-75.00.
 SHEEP: 20.00-35.00.
 GOATS. LARGE 65.00-84.00, MEDIUM 45.00-65.00; FLESHY KIDS 30.00-50.00; SMALL 20.00-30.00.
 PIGS AND SHOATS: BY THE HEAD, 20-30 LBS. 24.00-34.00; 30-50 LBS. 35.00-46.00, 50-70 LBS. 45.00-58.00; BY THE POUND, 100-125 LBS. 50.00-54.00; 180-200 LBS. 43.00-49.00.
 STOCK BOARS: 215-260 LBS. TO 46.50, 150-200 LBS. 42.00-50.00.
 SOWS: 350-475 LBS. 44.00-46.00, 475-750 LBS. 50.00-52.00
 BOARS: 43.75-44.50
 NOTE: NEXT STATE GRADED FEEDER PIG SALE FRI, APRIL 6, 1 30 P.M.

Friend's Stockyard, Inc.

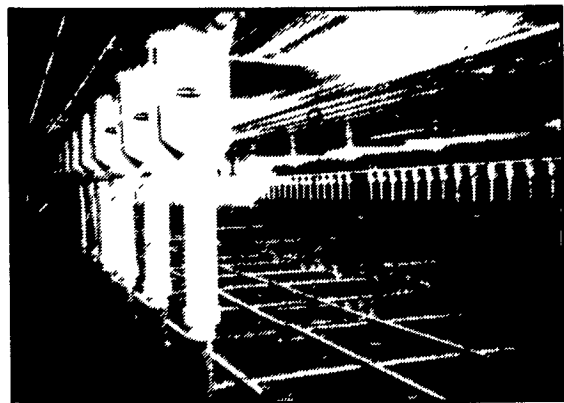
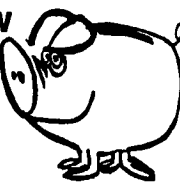
Accident, Md. 21520
 March 26, 1990
 STOCK BULLS & STEERS (200 TO 400 LBS.) 75.00-102.00.
 STOCK HEIFERS: 65.00-86.00.
 SLAUGHTER STEERS: GOOD TO CHOICE 74.50-76.60; MEDIUM TO GOOD 67.00-73.00.
 HOLSTEIN STEERS: HEAVY 57.50-64.50; LIGHT 57.00-62.00.
 SLAUGHTER HEIFERS: GOOD TO CHOICE 71.00-75.10; MEDIUM TO GOOD 65.00-70.50.
 BULLS: HEAVY 58.00-68.25; LIGHT 60.00-64.50.
 COWS: FEW HIGH DRESSING 54.00-56.50; UTILITY HOLSTEIN 48.00-53.00; CANNERS 43.00-51.50, COMMERCIAL TO GOOD 45.00-50.00; CULL COWS 42.00 & DOWN.
 VEALS: GOOD TO CHOICE 85.00-112.00, MEDIUM TO GOOD 65.00-82.50.
 BOB CALVES: 50.00-82.00.
 HOLSTEIN BULL CALVES RETURN TO FARM 100-120 LB 135.00-171.00.
 HOLSTEIN HEIFER CALVES: RETURN TO FARM 100-120 LB 90.00-115.00.
 HOGS: TOP QUALITY 52.50-54.25, HEAVY 51.00-52.75; LIGHT 40.00-48.00.

NEEDED!! FINISHING BARN & SOW UNITS
CALL US - 717-866-9565

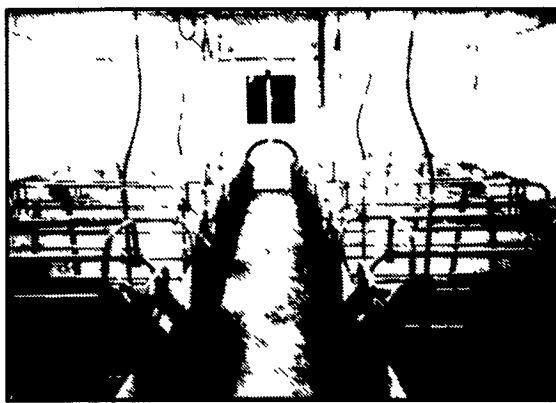


130 Sow Farrow Thru Feeder Pig Swine Facility

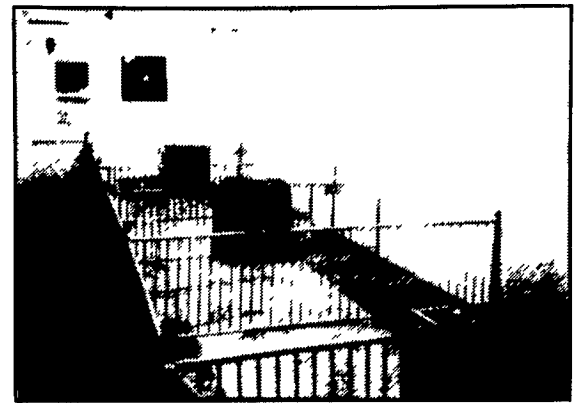
Let FARMER BOY AG's Experienced Staff Design To Build, Remodel Or Repair Your Facility To Your Specifications For Your Sow Unit Or Finishing Barn



Gestation



Farrowing



Nursery

INTERIOR VIEW

THIS UNIT FEATURES:

• **ALUMAX** Building Products

• **ACME kool-ceil** Fans And Shutters
 Evaporative Cooling

SWINE & POULTRY SYSTEMS SPECIALISTS
FARMER BOY AG.
 INC.

Hot-Dipped Galvanized Solid Steel Stabling

• **CHORE-TIME**

Bins, Augers And Automatic Sow Feeding Systems

★ **PLUS... Many More Quality Products Installed And Serviced By FARMER BOY AG!**

We Ship UPS

**HOURS: Monday Thru Friday 7:00-5:00
 Saturday 7:30-11:30**

Swine & Poultry Systems Specialists
FARMER BOY AG.
 INC.

410 E LINCOLN AVE MYERSTOWN PA 17067 PH 717-866-7565

24 Hour Service