

New Loader From Farmhand



EXCELSIOR, Minn. — Farmhand, Inc. announces the Model XL740 Quick-Tach universal fit loader for two-wheel drive tractors from 40 to 110 hp and front-wheel assist tractors from 40 to 86 hp.

Lift height is 10 feet, 6 inches with typical lift capacity to a full height of 2,800 pounds. Breakaway capacity is 4,500 pounds.

The unit includes Farmhand's exclusive Quick-Tach for fast tractor hookup, direct mount attachment coupler, level indicator, and parking stands. Optional attachments include 6-foot, 7-foot, and 8-foot buckets; grapple and manure forks; pallet fork; and 8- and 10-bale forks for handling square bales.

Contact Farmhand, Inc., P. O. Box 1500, Excelsior, MN 55331.

Booklets Look At Home-Grown Feeds

DEKALB, Ill.— Two informative booklets on the advantages of using home-grown feeds are available from A. O. Smith Harvestore Products, Inc., headquartered here.

Titled "Medium Moisture Forage" and "High-Moisture Grain," the full-color brochures describe how livestock and dairy farmers can benefit from using Harvestore® brand storage structures to process their crops.

The forage brochure discusses medium-moisture haylage and its

important advantages over conventional silage and dry hay. It also outlines the important management practices required to produce top-quality haylage from a variety of forage crops, and how these feeds can be used in livestock rations.

The high-moisture grain brochure provides similar information concerning the use of natural moisture corn, barley, and grain sorghum. The booklet includes an examination of the relative costs

of delayed harvest, artificial drying, and high-moisture storage and provides a simple worksheet that can be used to calculate potential economic benefits.

The brochures are available from your local authorized, independent Harvestore system dealer, Penn Jersey Products, Inc., New Holland, or by writing to Agricultural Marketing Department, A. O. Smith Harvestore Products, Inc., 345 Harvestore Drive, DeKalb, IL 60115.

Lykens Valley Structures

Cedar Lawn Furniture & Redwood Lawn Furniture Available



10'x14' Rectangle ready for shipping



10' Victorian Gazebo



Deluxe Screened Gazebo

Lykens Valley Structures are built using all pressure tested (SYP .40)

We Use All Galvanized Nails For Maximum Durability.

Gazebos Are Available in 8', 10', 12' & 14'

(Also Optional) Benches & Screening & Tables.

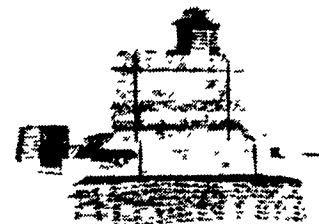
Wishing Wells & Bird Feeders & Lawn Furniture & Mailboxes

Also Available In Pre-Fab Kits.

(Deluxe Model Only).

8', 10', 12', 14', 18'

(Ready For Shipping)



R.D. 2 Box 59

Millersburg, Pennsylvania 17061

Delivery Is Also Available

No Sunday Calls
Also Dealer Inquiries Welcome



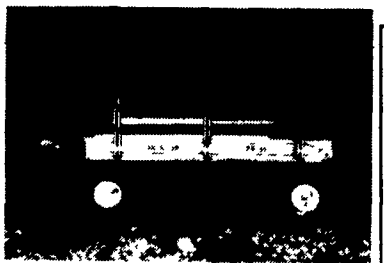
• ROLLER HARROWS



• FORE CARTS

• HIGH PRESSURE WASHERS

• TRAILERS • BARN FANS



• EXPRESS WAGONS

PAUL'S WELDING SHOP

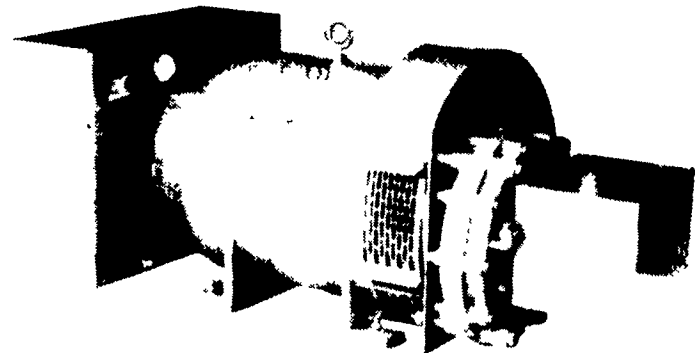
Paul Zook

717-786-9494

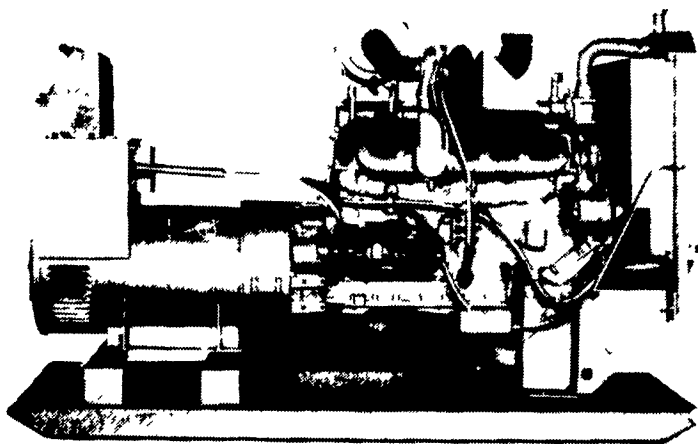
1248 Georgetown Rd.
Christiana, PA

Between Greentree and
Bart on Rt. 896

STANDBY GENERATORS



PTO Driven



Automatic Systems

MAXI-POWER INC.

330 Fonderwhite Rd. Lebanon, PA 17042

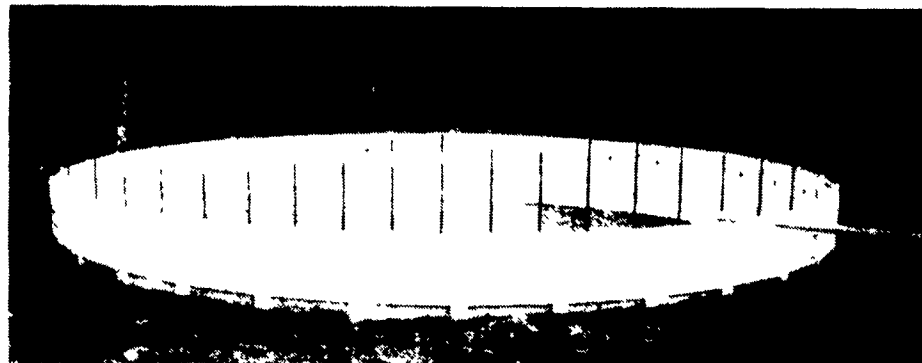
24 Hr. Service

(717) 273-4544

Radio Dispatch

Manure management systems to match your kind of livestock, type of manure ...and economics

"PLAN NOW for 1990 Construction" Contact us to discuss your MANURE MANAGEMENT PLANS



PRECAST CONCRETE - CIRCULAR TANKS

- * 8' or 12' depth
- * 24' thru 90' diameter
- * Inground or above ground
- * Exclusive: Tongue & groove vertical joints
Continuous cable around tank
Liquid tight closure pour at base
- * 50 year service life



Sollenberger Silos Corp.

A Nitterhouse Company

Box N Chambersburg, PA 17201

(717) 264-9588

SINCE BEFORE 1910

Office Number - 717-264-9588

For Upright Silos Call

Bob Francis

717-532-6848

For Bunker Silos & Manure Systems

Call Tabb Justus

717-762-8883

or Mike Hair

717-263-0792

Evenings