

**Central U.S.
Carlot**

Beef Report
March 21, 1990

Report supplied by USDA

CENTRAL U.S. CARLOT BEEF REPORT (INCLUDES THE MAJOR PRODUCTION AREAS IN THE MIDWEST, TEXAS AND OKLAHOMA) AS OF 3 P.M.

COMPARED TO TUESDAY'S 3 P.M. REPORT, STEER AND HEIFER CARCASSES NOT ESTABLISHED WITH WEAK UNDERTONE PREVALENT.

DEMAND AND MOVEMENT LIGHT TO VERY LIGHT ON LIGHT TO MODERATE SUPPLIES.

NO LOADS OF STEER CARCASSES AND NO LOADS OF HEIFER CARCASSES TRADED TO PACKER-PROCESSORS.

SALES REPORTED ON ZERO LOADS OF STEER AND HEIFER CARCASSES.

STEER CARCASSES
FOB OMAHA BASIS
CHOICE 3

600-900 LBS., LATEST ESTB. MKT. 114.00 A.

CHOICE 4
600-900 LBS., UNQUOTED.
SELECT 1-3

600-900 LBS., LATEST ESTB. MKT. 113.00 D.

HOLSTEIN TYPE

CHOICE 1-3
600-900 LBS. UNQUOTED.
SELECT 1-3

HEIFER CARCASSES
FOB OMAHA BASIS
CHOICE 3

550-800 LBS., LATEST ESTB. MKT. 114.00 A.

500-550 LBS., LATEST ESTB. MKT. 108.00 B.

400-500 LBS., LATEST ESTB. MKT. 107.00 B.

CHOICE 4
500-800 LBS. UNQUOTED.
SELECT 1-3

550-800 LBS., LATEST ESTB. MKT. 113.00 B.

400-550 LBS., UNQUOTED.
STEER CARCASSES
FOB AMARILLO BASIS
CHOICE 4

600-900 LBS. UNQUOTED.

HEIFER CARCASSES
FOB AMARILLO BASIS
CHOICE 4

500-800 LBS. UNQUOTED.
STEER & HEIFER
PRIMAL CUTS
CHOICE 3

120-165 LBS., LATEST ESTB. MKT. 121.00 E.

FRONT QUARTERS
135-210 LBS., LATEST ESTB. MKT. 109.00 E.

**Central U.S.
Carlot**

Pork Report
March 21, 1989

Report supplied by USDA

CENTRAL U.S. CARLOT PORK REPORT FOB OMAHA BASIS INCLUDES MAJOR PRODUCTION AREAS IN MIDWEST AS OF 3 P.M. COMPARED TUESDAY'S 3 P.M. CLOSE: FRESH PORK LOINS 14-18 LBS. CLOSING NEAR STEADY AFTER EARLY TRADING OF 3.00-7.00 LOWER; BOSTON BUTTS 4.00-5.00 HIGHER THAN LAST TEST; SKD. HAMS 20-26 LBS. 2.00-4.00 HIGHER; 17-20 LBS. NOT TESTED; SDL. BELLIES STEADY TO WEAK. DEMAND AND OFFERINGS LIGHT TO MODERATE; MOVEMENT SLOW.

62 LOADS PORK CUTS
LOADS TRIM

PROCESS PORK, PORK CUTS
LOINS, REG., FRESH
3 LOADS

14-18 LBS. * 10 LOADS, RANGE 115.00-122.50, WGHTD. AVG. 117.35.
1/2" TRIM 14-18 LBS., 11.5 LOADS, RANGE 130.00-141.50, WGHTD. AVG. 133.35.

18-22 LBS. * 2 LOADS, RANGE 115.50-116.50, WGHTD. AVG. 115.75.
1/2" TRIM 18-22 LBS., 2 LOADS, RANGE 130.50-131.50, WGHTD. AVG. 130.75.

COMBOS 22/UP LBS. UNQUOTED.

LOIN, BLS CTRCT
5-7 LBS., 1 LOAD, RANGE 259.00-261.25, WGHTD. AVG. 260.13.
BNLS SIRLOIN

75-1 LB., RANGE 160.00, WGHTD. AVG. 160.00 A.

TNDRLN, MUSCLE-OFF
1 LOAD, RANGE 314.00-324.00, WGHTD. AVG. 319.00.

BOSTON BUTT
4-8 LBS., * 3.5 LOADS, RANGE 85.00-88.00, WGHTD. AVG. 87.14.

1/2" TRIM 4-8 LBS., 3.5 LOADS, RANGE 101.00-102.00, WGHTD. AVG. 101.57.

COMBOS 8/UP LBS., 1 LOAD, RANGE 82.00, WGHTD. AVG. 82.00.

SPARERIBS, FRESH
1.5-3.5 LBS., RANGE 120.00, WGHTD. AVG. 120.00 A.

SPARERIBS, FROZEN
1.5-3.5 LBS. RANGE 114.00, WGHTD. AVG. 114.00 C.

LOIN BACKRIB (BOXED)
FRSH/FRZN

1.5/DN LBS., RANGE 265.00, WGHTD. AVG. 265.00 A.

1.75/DN LBS., .5 LOAD, RANGE 244.00, WGHTD. AVG. 244.00.

HAM, SKINNED, FRESH
14-17 LBS. UNQUOTED.

17-20 LBS., 1 LOAD, RANGE 75.00, WGHTD. AVG. 75.00.

20-26 LBS., 11 LOADS, RANGE 72.00-74.75, WGHTD. AVG. 73.55.

26-32 LBS., .5 LOAD, RANGE 75.00, WGHTD. AVG. 75.00.

32/UP LBS., 2.5 LOADS, RANGE 74.00, WGHTD. AVG. 74.00

BELLY, SDLS, SKIN-ON, FRESH
10-12 LBS., RANGE 41.00, WGHTD. AVG. 41.00 D.

12-14 LBS., 8 LOADS, RANGE 42.00-43.00, WGHTD. AVG. 42.13

14-16 LBS., 8 LOADS, RANGE 42.00-43.00, WGHTD. AVG. 42.13.

16-18 LBS., 3 LOADS, RANGE 41.00, WGHTD. AVG. 41.00.

18-20 LBS., 3 LOADS, RANGE 40.00,

WGHTD. AVG. 40.00.
20-25 LBS., 1 LOAD, RANGE 40.00, WGHTD. AVG. 40.00.

PORK TRIMMINGS
BONELESS PROCESSING PORK
CHEMICAL LEAN

COMBO 42% FRESH, RANGE 49.00, WGHTD. AVG. 49.00 A.

BOXED 42% FROZEN, RANGE 48.00, WGHTD. AVG. 48.00 B.

COMBO 72% FRESH, 1 LOAD, RANGE 79.50, WGHTD. AVG. 79.50.

BOXED 72% FROZEN, RANGE 82.50, WGHTD. AVG. 82.50 B.

BLADEMEAT

COMBO 88% FRESH, RANGE 105.00, WGHTD. AVG. 105.00 C.

PICNIC CUSHION MEAT
COMBO 92% FRESH, RANGE 114.00-116.00, WGHTD. AVG. 115.33 A.

BONELESS PICNIC MEAT
COMBO 72% FRESH, RANGE 81.00, WGHTD. AVG. 81.00 D.

BOXED 72% FROZEN, 2 LOADS, RANGE 84.00, WGHTD. AVG. 84.00.

SKINNED JOWLS
COMBO FRESH, RANGE 36.00, WGHTD. AVG. 36.00 D.

BOXED FROZEN, RANGE 39.00-41.00, WGHTD. AVG. 40.00 A.

NOTE! (*) REFLECTS 1/2" TRIMMED PRODUCT BROUGHT BACK TO A REGULAR COMMODITY BASIS.

ABCDE AFTER QUOTES REPRESENTS DAYS SINCE LAST ACTUAL MARKET TEST. QUOTES ARE DROPPED AFTER 5 DAYS OF NO TEST OR BEFORE IF THEY NO LONGER REFLECT CURRENT MARKET CONDITIONS.

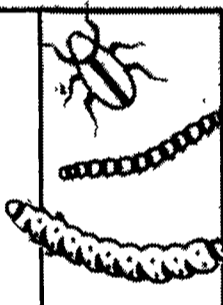
PORK CARCASS CUTOUT
WED., MARCH 21, 1990

US#1, 72.35, CHANGE FROM TUES.'S VALUE 0.15; US#2 69.94, CHANGE 0.13; US#3 67.54, CHANGE 0.13; US#4 65.13, CHANGE 0.11.

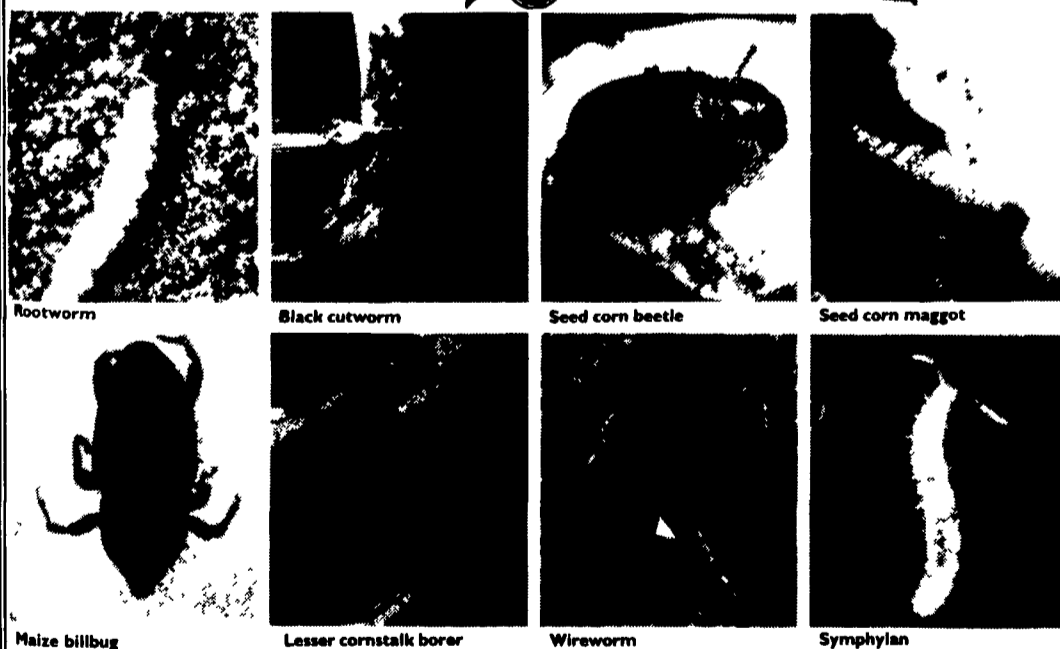
Dyfonate gives control without compromise of both cutworms and rootworms.



- Consistent results trial after trial.
- Effective longer in the soil.
- Controls cutworms without compromise, too.
- Works best...yet costs less.



Agricultural Products



Dyfonate controls a broad spectrum of pests.

- Northern, Western and Southern corn rootworm
- Black cutworm
- European corn borer
- Seed corn beetle
- Seed corn maggot
- Maize billbug
- Lesser cornstalk borer
- Wireworms
- Symphylan

For more information, ask your dealer



JAMES H. PATCHES

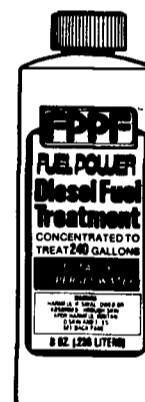
RD 2, Prescott Rd., Myerstown, PA 17067
1 1/2 Mi. Northwest of Schaefferstown
(717) 949-3860

Diesel Fuel PROBLEMS?

FPPF FUEL POWER

The Additive For All Reasons And Seasons!

- FPPF Fuel Power is a year 'round fuel additive that:
- totally disperses water to protect the fuel injection system
 - prevents the growth of algae
 - decarbonizes the entire fuel injection system
 - provides GREATER POWER and more miles per gallon



For further information, write/call:

MILLER DIESEL INC.

DIESEL FUEL INJECTION & TURBO CHARGER SPECIALIST
TUNE UPS AVAIL. BY APPT.

6030 Jonestown Rd., Harrisburg, PA 17112
717-545-5931 Interstate 81 Exit 26

#1 YEAR ROUND BEST SELLER

PERSONAL AUTO INSURANCE FOR FARMERS

Now, we have coverage for your personal car or pickup. Another service from the #1 insurer of farm owners in your area.



Old Guard MUTUAL INSURANCE COMPANY

2929 Litz Pike, Lancaster, PA 17604 717-569-5361

GRAHAM-SWIGART INS. & REAL ESTATE
15 N. Dorcas Street
Lewistown, PA 17044
(717) 248-9696

C.A.S. HOLLINGER
30 Foreman Road
Elizabethtown, PA 17022
(717) 367-6680

JOHN P. HELD
403 Union Street
Millersburg, PA 17061
(717) 692-4717

C.W. HOWARD INS. AGCY, INC.
334 W. Jefferson Street
Butler, PA 16601
(412) 283-8181