

Dewart Livestock Auction

Dewart, Pa.

Monday, March 19, 1990
Report Supplied by PDA

CATTLE 102...PDA...Compared with last Monday's market: Slaughter cows steady to 1.00 lower. One Select slaughter steer 66.00, couple Standard 58.75. Few Standard Holstein heifer 56.00-56.75. Breaking Utility & Commercial sl. cows 48.00-53.00, one 63.50, Cutter & Bon. Utility 48.00-52.50, Canner & Low Cutter 45.00-49.00, Shells down to 37.75. Few Yield Grade No. 1, 975/1500 lbs. sl. bull 57.00-67.75. Feeder Cattle: Few Large Frame No. 1, 300/800 lbs. steers 61.00-75.00.

CALVES 159...Few Choice vealers 100.00-113.00, few Standard & Good 70/95 lbs. 70.00-78.00, Utility 60/85 lbs. 58.00-70.00. Farm Calves: Holstein Bulls No. 1, 90/130 lbs. 100.00-140.00, No. 2, 85/125 lbs. 80.00-115.00; few Hol. Heifers 90/125 lbs. 80.00-140.00.

HOGS 44...Lot US 1-3 225 lbs. barrows and gilts 53.50, few lots 1-3 220/230 lbs. 48.50-50.20, lot 2-3 275 lbs. 46.00. Few US No. 1-3 480/530 lbs. sows 43.75-45.25. Couple Boars 37.00&37.50.

FEEDER PIGS 52...Few Lots US No. 1-3 40/50 lbs. feeder pigs 38.00-48.00 - all per head.

SHEEP 8...Few Choice 85/125 lbs. fall lambs 65.00-70.00.

GOATS 0...No Market Test.

New Wilmington Livestock Auction

N. Wilmington, Pa.
Monday, March 19, 1990
Report Supplied by PDA

CATTLE 265...PDA...Compared with last Monday's market: Slaughter cows 1.00 to 1.50 higher. Few Choice slaughter

steers 74.00-77.00, few Select 69.75-72.75; few Select Holsteins 62.25-65.50, few Standard 62.00-68.50. Few Choice sl. heifers 69.75-73.00, one 76.00, few Select & low Choice 66.50-70.00, few Standard 60.00-65.75. Breaking Utility & Commercial sl. cows 51.00-55, one 56.00, low yielding down to 48.00, Cutter & Boning Utility 48.50-53.50, high dressing 55.25, Canner & Low Cutter 43.00-49.25, Shells down to 35.00. Yield Grade No. 1, 1135/1960 lbs. sl. bulls 60.50-65.50, couple No. 2, 1025/1195 lbs. 54.00&57.75. Feeder Cattle: Medium & Large Frame #1, 600/900 lbs. steers 66.00-72.00, few Large No. 2, 625/985 lbs. Holsteins 61.00-64.00. Few Med. & Large Frame No. 1, 370/545 lbs. heifers 69.00-80.00. Med. & Large Frame No. 1, 345/675 lbs. bulls 75.00-82.00, Large No. 2, 605/910 lbs. Holsteins 60.00-68.00.

CALVES 394...One Choice vealers 111.00, few Good 100.00, Standard & Good 90/125 lbs. 69.00-78.00, 60/85 lbs. 58.00-70.00, lot Utility 55 lbs. 50.00. Farm Calves: Hol. Bulls 90/140 lbs. 100.00-157.00, No. 2, 80.00-110.00, 80/90 lbs. 70.00-100.00; Hol. Heifers 90/135 lbs. 110.00-158.00, 75/85 lbs. 92.50-99.00; Beef cross 90/135 lbs. bulls & heifers 110.00-165.00, 65/85 lbs. 70.00-100.00.

HOGS 443...Barrows and gilts strong to .25 higher. US No. 1-2 225/260 lbs. 52.75-53.50, 1-3 225/265 lbs. 51.25-52.75, 2-3 230/255 lbs. 47.25-51.00, 1-3 210/225

lbs. 49.25-51.25. Sows mostly 7.00 lower. US No. 1-3 320/660 lbs. sows 40.00-48.75, one 49.50, Medium 290/395 lbs. 34.75-39.75. Boars 37.00-41.50.

FEEDER PIGS 3...No Market Test.
SHEEP 55...Few Choice & Prime 50/80 lbs. spring slaughter lambs 82.00-95.00, few Choice 90/120 lbs. wool lambs 65.00-71.00. Slaughter sheep 9.00-24.00.
GOATS 13...Few Large 40.00-65.00, Medium & Small 26.00-42.00 --- all per head.

Leesport Livestock Auction

Leesport, Pa.
Wednesday, March 21, 1990
Report Supplied by PDA

CATTLE 236...PDA... Supply include 29 head feeder cattle ...Compared to last Wednesday's market: Slaughter steers steady to 2.00 lower; mostly decline on Holsteins; Cows steady to .75 higher, mostly decline on Canner and Cutter. Choice 1100/1500 lbs. sl steers 74.00-78.10, Select 68.00-74.25; few High Choice & Prime 1300/1600 lbs. Holsteins 71.00-73, Choice 1300/1450 lbs. 64.25-68.85, one 70.75, Select 62.75-64.75, few Standard 57.00-60.75. Few Choice sl. heifers 67.75-70.00, few Select 60.00-62.75. Breaking Ut. & Commercial sl. cows 49.50-54.00, few 55.25, low dressing 46.25-48.50, Cutter & Bon. Utility 49.50-54.25, few 55.00, Canner & Low Cutter 48.25-50.50, few 53.25. Select & Choice sl. bullocks 63.00-66.25, one 67.75, few Standard 58.25-62.00. Few

Yield Grade No. 1, 1275/2310 lbs. sl. bulls 60.75-64.25, one No. 2, 1140 lbs. 57.50. Feeder Cattle: One Lot Medium Frame No. 1, 350 lbs. steers 71.00, few Large No. 1-2, 680/825 lbs. 64.00-66.00. Large Frame No. 2, 675/825 lbs. heifers 55.00-57.50. Few Medium Frame 1-2, 480/550 lbs. bulls 60.00-70, one 90.00.

CALVES 173...Few Choice vealers 104.00-115.00, one 131.00, one Good 86.00, few Standard & Good 85/120 lbs. 74.50-78.00, few 70/80 lbs. 72.50-75.00, few Utility 65/75 lbs. 58.00-62.00. Farm Calves: No. 1, Holstein Bulls 90/130 lbs. 137.50-156.00, few 85/90 lbs. 127.50-132.50, No. 2, 90/120 lbs. 102.50-132.50, few 80.00, 80/85 lbs. 74.00-88.00; No. 1, Holstein 95/130 lbs. heifers 110.00-160.00, few No. 2, 80/100 lbs. 75.50-102.50. Beef cross 75/125 lbs. bulls and heifers 90.00-149.00.

HOGS 419...Barrows and Gilts unevenly steady. US No. 1-2 225/240 lbs. 51.50-52.00, few 53.25, 1-3 210/250 lbs. 50.00-51.75, few 2-3 255/270 lbs. 48.25-50.00, one lot 280 lbs. 46.00, few 1-3 125/200 lbs. 44.00-46.85. Sows under 500 lbs. 1.00 to 4.00 higher, over 500 lbs. 1.00 to 1.50 lower. US No. 1-3 315/500 lbs. sows 46.00-48.00, 500/675 lbs. 49.50-51.50, few Medium 250/400 lbs. 36.00-44.00. Boars 40.75-42.75.

FEEDER PIGS 269...US No. 1-3 20/40 lbs. feeder pigs 100.00-122.50, lot 130.00, 40/45 lbs. 80.00-97.00, 70/90 lbs. 60.00-74.00 --- all per hundredweight.

SHEEP 45...Choice 20/45 lbs. spring slaughter lambs 105.00-115.00, one

125.00, few 55/80 lbs. 78.00-95.00, few Good and Choice 20/45 lbs. 80.00-102.50. Slaughter sheep 19.00-43.00.

GOATS 13...Large 53.00-72.50, couple Kids 26.00&27.00 --- all per head.

Friend's Stockyard, Inc.

Accident, Md. 21520
March 19, 1990

STOCK BULLS & STEERS (200 TO 400 LBS.) 75.00-103.50.

STOCK HEIFERS: 65.00-88.00.
SLAUGHTER STEERS: GOOD TO CHOICE 74.50-78.10; MEDIUM TO GOOD 67.00-73.00.

HOLSTEIN STEERS: HEAVY 57.50-65.50; LIGHT 57.00-62.00.
SLAUGHTER HEIFERS: GOOD TO CHOICE 71.00-76.00; MEDIUM TO GOOD 65.00-70.50.

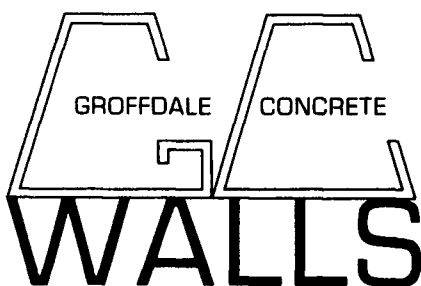
BULLS: HEAVY 58.00-68.50; LIGHT 60.00-68.00.

COWS: FEW HIGH DRESSING 55.50-58.00; UTILITY HOLSTEIN 48.00-55.00; CANNERS 43.00-51.50; COMMERCIAL TO GOOD 45.00-50.00; CULL COWS 42.00 & DOWN.

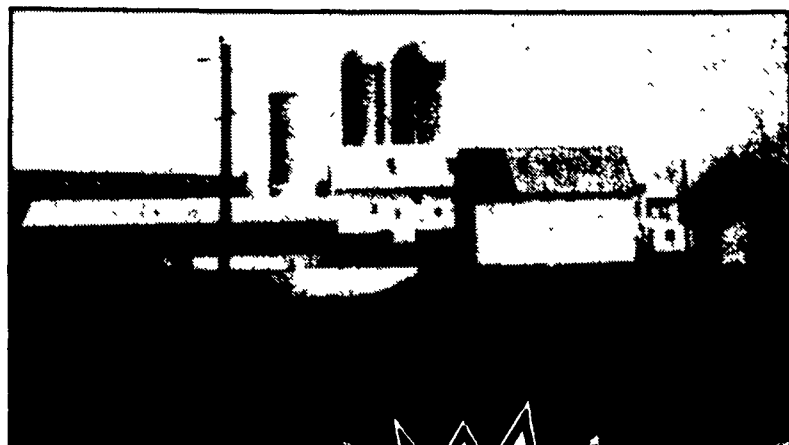
VEALS: GOOD TO CHOICE 85.00-112.00, MEDIUM TO GOOD 65.00-82.50.

BOB CALVES: 60.00-82.00.
HOLSTEIN BULL CALVES: RETURN TO FARM 100-120 LB. 120.00-147.50.

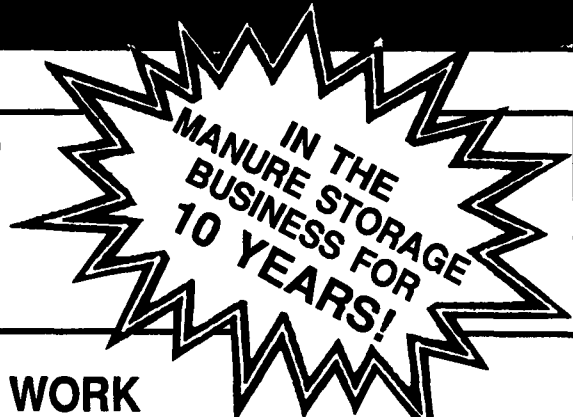
HOLSTEIN HEIFER CALVES: RETURN TO FARM 100-120 LB. 90.00-115.00.



148 Brick Church Road
Leola, PA
717-656-2016



Thanks To The Farmers Who Made
It Possible For Us To Build
40 Circular Manure Storage
Tanks In 1989!

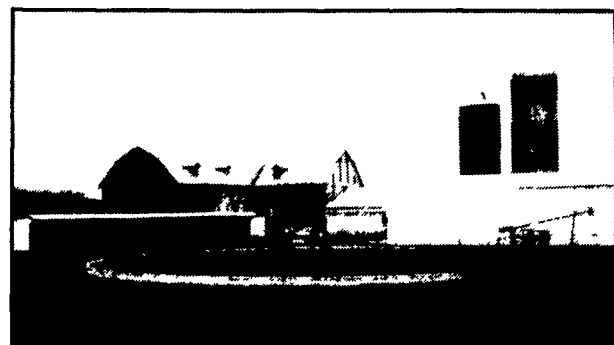


LET OUR 10 YEARS EXPERIENCE WORK
FOR YOU! WE ORIGINATED THE CONCRETE SYSTEM!

- WORKING WITH FARMERS WITH CHESAPEAKE BAY FUNDING -



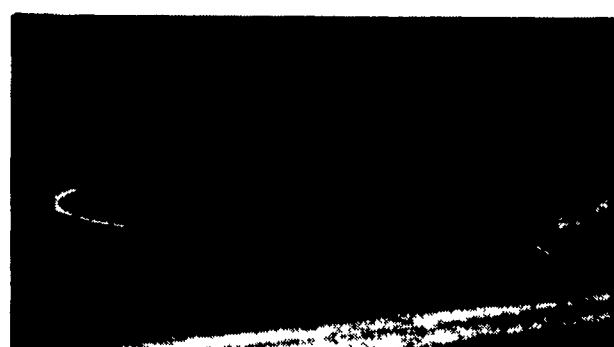
FEATURING TRACTOR GUARD FOR
SCRAPING FEED LOT



IN-GROUND
MANURE STORAGE SYSTEM



ABOVE-GROUND MANURE STORAGE
TANK WITH SIDE-MOUNT PUMP

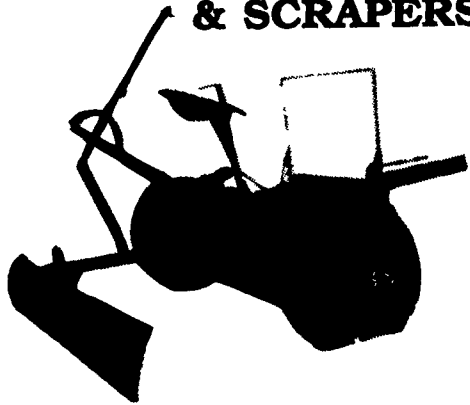


PARTIAL IN-GROUND TANK FEATURING
COMMERCIAL CHAIN LINK FENCE
(5' High - SCS Approved)

Our Sales Tool Is A Satisfied Customer -
Call Us For Information!
WE'RE NOT SATISFIED UNTIL YOU ARE!

SIZES AND LAYOUTS TO YOUR SPECIFICATIONS!

FARM CARTS & SCRAPERS



Farm Cart..... \$325
Cart with Brakes \$400
Scraper Only \$200
Cart & Scraper
with brakes..... \$595
without brakes..... \$520

BARTVILLE WELDING SHOP

1245 Noble Rd.
Christiana, PA (At Bartville) 17509
All Prices F.O.B. Bartville

WE DISTRIBUTE IN ALL NORTH ATLANTIC STATES

Liquid Fertilizers "Excellent & Safe" For Soil, Foliar & Injection Systems Applications

- Profit Begins With Supreme Quality And High Yields
- Na-Churs Fertilizer And Micro-Nutrients
- Double-OK-0-0-30, No Chlorine & Salt
- Blvert-Encapsulator- Profitable For All Spraying Applications
- Nutri-Cal-Exclusive, Non-Corrosive Organic Chelate Agent
- Maxicrop- Organic Trace Element

★ **SAFE - NON-CORROSIVE** ★
PARS, Inc. Is Committed To Clean Water & Soil With Quality Products Safe For Wildlife, Environment And Consumer.

Distributors Of Custom Farm Seeds,

Corn, Beans and Alfalfa



PARS, INC.

(POSITIVE APPROACH for REVITALIZING SOILS)

1585 Landis Road Elizabethtown, PA 17022
Phone (717) 367-2667

Call TOLL FREE For The Name Of Your Local Representative
Touch Tone Phones 6-717-367-2667, listen for tone, then press 4757
Dial phones: 6-717-367-2667, toll operator "Card Number 4757"
(Do Not Dial 717 If Calling From Within This Area Code)