

Two Kent County Dairymen Top Maryland DHIA

CHESTERTOWN, Md. — Two Kent County herds topped the 1989 Maryland Dairy Herd Improvement Association production and somatic cell count lists.

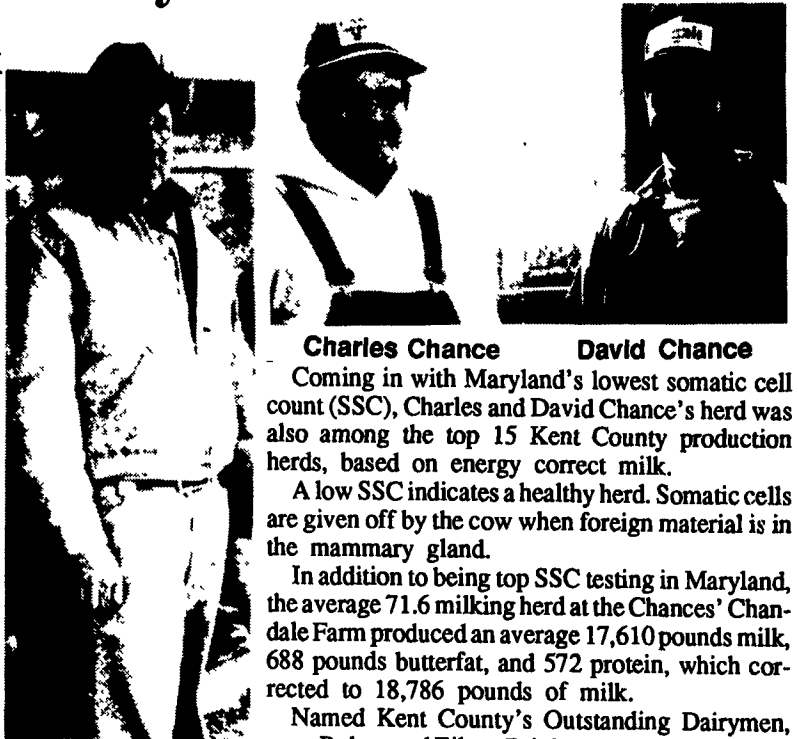
The top-producing herd, Hols- butterfat, and 757 pounds protein. teins, is owned by George R. Debnam, of Worton. It showed a energy, averaged 24,751 pounds. herd average on 13.2 cows of 24,333 pounds milk, 876 pounds

KENT COUNTY

TOP 15 HERDS FOR ENERGY CORRECTED MILK (ECM) PRODUCTION Year Ending December 31, 1989

Owner	Days		Lbs. Milk	% Fat	Lbs. Fat	% P/S	Lbs. P/S	Avg. ECM
	Cow Years	In Milk						
Terra View Farm	13.2	89	24,333	3.60	876	3.11	757	24,751
R.&E. Brink	68.0	91	21,584	3.68	793	3.19	689	22,288
John Z. Stoltzfus	75.8	87	21,595	3.57	770	3.20	690	22,001
Fair Hill Farm, Inc.	120.7	90	20,551	3.73	766	3.17	651	21,327
Roy W. Crow	65.6	88	20,140	3.63	731	3.14	633	20,610
Gen Farm I	609.1	87	19,701	3.76	740	3.20	631	20,568
Michael H. Philipp	69.3	89	19,742	3.60	711	3.19	631	20,206
Hills Dairy Partnership	141.6	86	19,333	3.66	709	3.19	616	19,939
Wm. Sutton/Sutton, Jr.	106.0	89	18,673	3.68	687	3.22	602	19,337
Pudding Run Farm	61.9	87	18,756	3.56	668	3.30	618	19,233
Howard McHenry	190.5	88	19,100	3.43	656	3.17	606	19,104
All Reed Farm	73.0	89	18,175	3.66	666	3.31	602	18,902
Dix-Lee	32.3	87	18,693	3.39	634	3.32	621	18,794
Chandale Farm	71.6	86	17,610	3.91	688	3.25	572	18,786
Friendship Farms, Inc.	107.3	85	18,135	3.55	644	3.17	575	18,410

*NOTE: Herds must have 10 or more cows to be recognized at State level.



George R. Debnam

Charles Chance David Chance

Coming in with Maryland's lowest somatic cell count (SSC), Charles and David Chance's herd was also among the top 15 Kent County production herds, based on energy correct milk.

A low SSC indicates a healthy herd. Somatic cells are given off by the cow when foreign material is in the mammary gland.

In addition to being top SSC testing in Maryland, the average 71.6 milking herd at the Chances' Chandale Farm produced an average 17,610 pounds milk, 688 pounds butterfat, and 572 protein, which corrected to 18,786 pounds of milk.

Named Kent County's Outstanding Dairymen, were Robert and Eileen Brink, also of Worton. Their dairy herd's corrected production ranked second in the county, although third when compared to straight pounds of milk.

The Brinks received the title of Outstanding Dairymen based on leading the county with the most ideal herd management practices. Among these are herd average milk and fat, calving interval, days open, days to first breeding, services per conception, days dry, age at first calving, culling rates and number of animals in the herd.

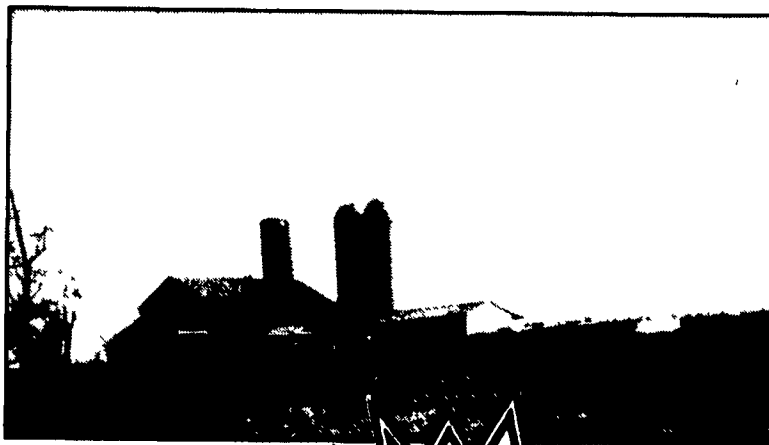
The Brinks' 68 average milk herd produced 21,584 pounds milk, 793 pounds fat, and 689 pounds of protein. The corrected production averaged 22,288 pounds.



Robert and Eileen Brink sit and review DHIA records, with a trophy that names the couple Kent County's Outstanding Dairymen adorning their table.

GROFFDALE CONCRETE
WALLS
INC.

148 Brick Church Road
Leola, PA
717-656-2016



**IN THE
MANURE STORAGE
BUSINESS FOR
10 YEARS!**

Thanks To The Farmers Who Made
It Possible For Us To Build
40 Circular Manure Storage
Tanks In 1989!

LET OUR 10 YEARS EXPERIENCE WORK
FOR YOU! WE ORIGINATED THE CONCRETE SYSTEM!

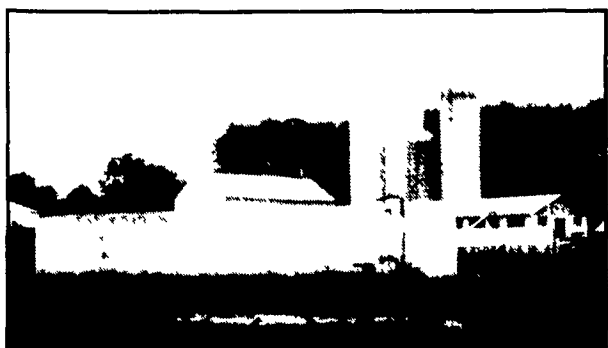
- WORKING WITH FARMERS WITH CHESAPEAKE BAY FUNDING -



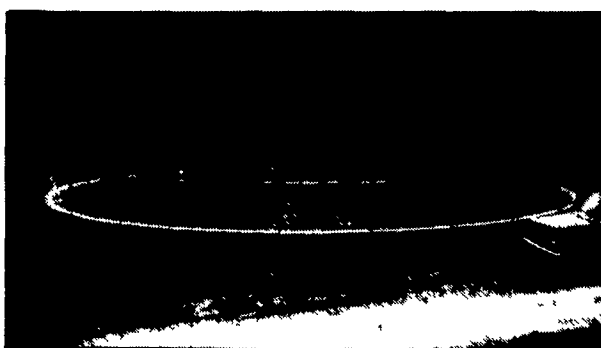
FEATURING TRACTOR GUARD FOR
SCRAPING FEED LOT



IN-GROUND
MANURE STORAGE SYSTEM



ABOVE-GROUND MANURE STORAGE
TANK WITH SIDE-MOUNT PUMP

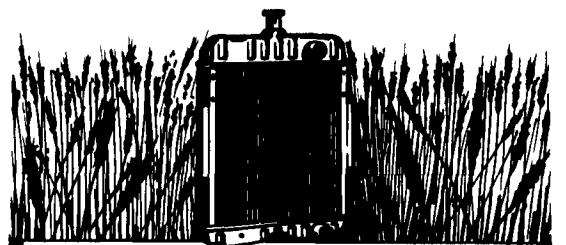


PARTIAL IN-GROUND TANK FEATURING
COMMERCIAL CHAIN LINK FENCE
(5' High - SCS Approved)

Our Sales Tool Is A Satisfied Customer -
Call Us For Information!

WE'RE NOT SATISFIED UNTIL YOU ARE!

SIZES AND LAYOUTS TO YOUR SPECIFICATIONS!



PERFORMANCE-PROVEN AG RADIATORS.

**OUTSTANDING IN
ANY FIELD.**

We're Your
AG RADIATOR SPECIALISTS
See Us For Sales,
Repairs, Recoring, Cleaning

**EPHRATA
AUTO & RADIATOR SERVICE**

(717) 733-0613 1779 W. Main St., Ephrata, PA 17522



MODINE