

35 TRUCKS & TRAILERS

ALUMINUM DIESEL FUEL TANKS AT DISCOUNT PRICES!

NEW-GUARANTEED-HUNDREDS TO CHOOSE FROM

Cylinder Size
22"-24"
26"-28"

44 gal. to 159 gal.

Alum. or Steel
TANKS FOR HOTSHOT TRUCKS
Also Square Steel Tanks & Alum.

BRACKETS ON STOCK

Have You
Thanked
The Lord
Today!

HORST BROS.

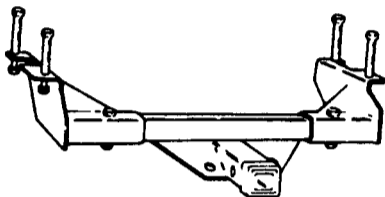
R.D. No. 2, Box 403
Myerstown, PA

(717) 949-3658

Location - North from Schaefferstown on Rt 419 - First road right (Valley View Rd.) then the second lane left.

SEE US FOR YOUR BOLT ON RECEIVER HITCHES

Heavy Duty Class 4
10,000 LB. MTGW
1,000 Lb. Tongue Wt.
W/WT Distributing



ALSO SEE US for your Axle parts & complete assemblies
2,000 - 22,500 LB.

Axles & Suspensions
Metal Trailer Components
Lights & Electrical supplies
Brakes, Tires & Wheels
Jacks, Couplers & Hitches
Hardwood Accessories & much more

Buy Where the Quality is #1 at the right price

Ask For Jerry At:

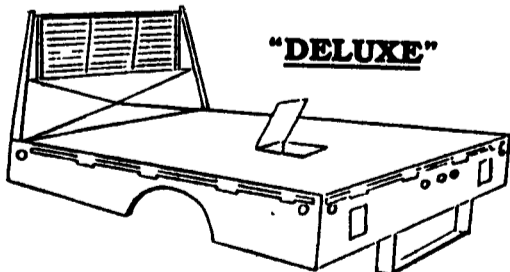
BINKLEY & HURST BROS. INC.

133 Rothsville Station Rd. • Lititz, PA. 17543
Phone: 626-4705

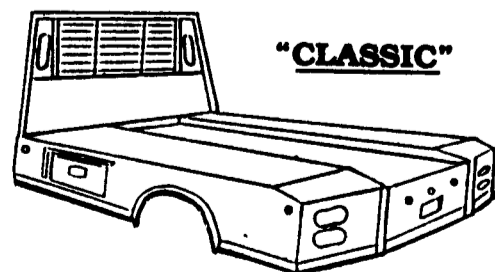
FLATBEDS AND GOOSENECK BEDS ECONOMICALLY PRICED-DEPENDABLY BUILT!
Sizes From Mini Imports To 12' One Ton.



"WESTERN"



"DELUXE"



"CLASSIC"



Hostetler Truck Bodies & Trailers

Rt. 322 Milroy, PA 17063
1-800-441-5161

'87 Ford F250 1/2 ton super cab, 300 EFI, 4 spd., PS, PB, AM-FM, dual tanks, 8,600 GVW, 32,000 miles, excellent condition, \$9,600. 717-733-2873

'88 Chevy C30 w/9' Morrisville utility body, 350 auto., PB, PS, 9,000 GVW, 1,500 original miles, like new, \$12,500. 717-733-2873

'88 Chevy C30 w/12' stake body w/1,800 lb. fold away power lift gate, 350, auto., PB, PS, 4,000 miles, like new, \$13,500. 717-733-2873

'88 Chevy Silverado 2500, 1/2 ton, 6.2 liter diesel w/new Reading utility body, PS, PB, 24,000 miles, excellent condition, \$10,995. 717-733-2873

'88 Dodge D250, 1/2 ton pickup, 315 EFI, auto., PB, PS, AM-FM, 15,000 miles, brown & tan, excellent condition, \$8,950. 717-733-2873

'88 Ford E350 14' flat floor cube van, 7.3 diesel, auto., PB, PS, AM-FM cassette, 10,700 GVW, excellent condition, \$9,950. 717-733-2873

'88 Ford F150, HD, 1/2 ton, 300 EFI, HD 4 spd., PS, PB, AM-FM, dual tanks, 6,250 GVW, 15,000 miles, blue, \$8,350. 717-733-2873

'88 Ford XL F150, super cab, 300 EFI, 5 spd., PS, PB, AM-FM, dual tanks, 6,250 GVW, blue & silver, excellent condition, \$9,950. 717-733-2873

'86 Dodge Royal SE D250, 1/2 ton, 4x4, 360 auto., PB, PS, PW, cruise, tilt, air, AM-FM cassette, 8,510 GVW, 2 tone blue, 44,000 miles, excellent condition, \$8,950. 717-733-2873

'86 Dodge 350 Royal 15' passenger Mini Van, 360, auto., PB, PS, cruise, tilt, dual air & heat, AM-FM stereo, 41,000 miles, charcoal, excellent condition, \$9,995. 717-733-2873

SPECIAL PRICES ON STOCK TRAILERS



6'x12' Bumper Hitch, Red.....\$2,250
6'x12' Bumper Hitch, Gray
6'x16' Bumper Hitch,
12,000 GVW\$3,495



Rt. 301, 1 1/2 Miles South of Schaefferstown, PA
PHONE: (717) 640-0517 or 640-3540
Mon. & Wed. 9 to 5; Tues, Thurs, Fri. 9 to 6;
Sat. 9 to 4

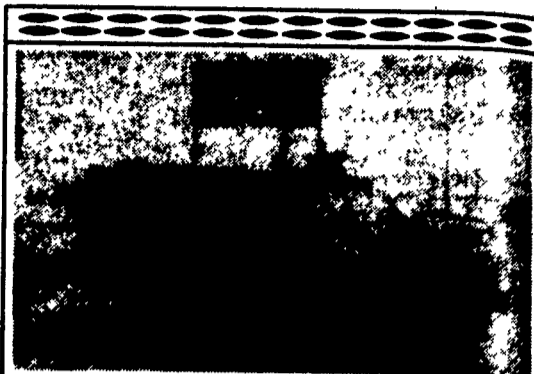
MARTIN HARDWARE & EQUIPMENT CO. INC.

TRAILERS FOR SALE

(2) 45' Flats
(2) 40' Flats
45x13'6" Fruehauf Furniture Van, double side doors
40' Highway Cattle Van
Storage Trailers for Sale or Rent
(4) Van Bodies, 18-20-22'

Keens Services, Inc.

Lititz, PA
717/626-5420



1986-87 Ford F-800 6 yd. dump-trucks, 28000 GVW, 5+2 transmission, some flatbed dumps available, starting at \$18,000.

For Info Call:

Hertz Equipment Rental

215-391-1890

Ask For Tom Burleigh



QUALITY BUILT

LAWN SERVICE TRAILERS

**3 Different Models To Choose From
Prices Starting as Low as \$1,695.00**



**MODEL OLT 3400:
12 FOOT BED
3400 GVW**



**MODEL OLT 6500:
16 FOOT BED
6800 GVW**

STANDARD FEATURES

- ★ Structural Steel Construction
- ★ Swing Down Jack
- ★ 2" Treated Wood Bed
- ★ ICC-Approved PROTECTED Lights
- ★ 15" White Spoked Wheels
- ★ 2 5/16" Ball Coupler (2" On OLT3400)
- ★ 4 Tie Down Rings
- ★ Battery Box & Battery
- ★ Break Away Safety Switch
- ★ Electric Brakes On Both Axles

**MODEL OLT 6520:
20 FOOT BED
6800 GVW**

OPTIONS AVAILABLE

- ★ Tool Box
- ★ Tie Down Straps
- ★ Tie Down Chains
- ★ Load Binders
- ★ Hydraulic Surge Brakes With 2" Ball Coupler
- ★ Spare Wheel & 1/4 Tire And Mounting Bracket

All Trailers Come With A One Year Limited Warranty

Trailers Can Be Seen & Purchased At:

717-354-2150
Ken Burkhart

FARMERSVILLE EQUIPMENT

717-354-2150
Tom Buch

**R.D. 4, East Farmersville Road, Ephrata, PA 17522
Located In The Village Of Farmersville, Lancaster County**