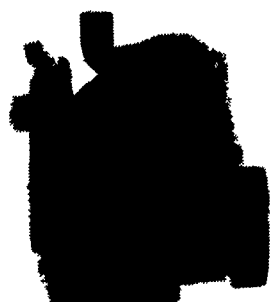
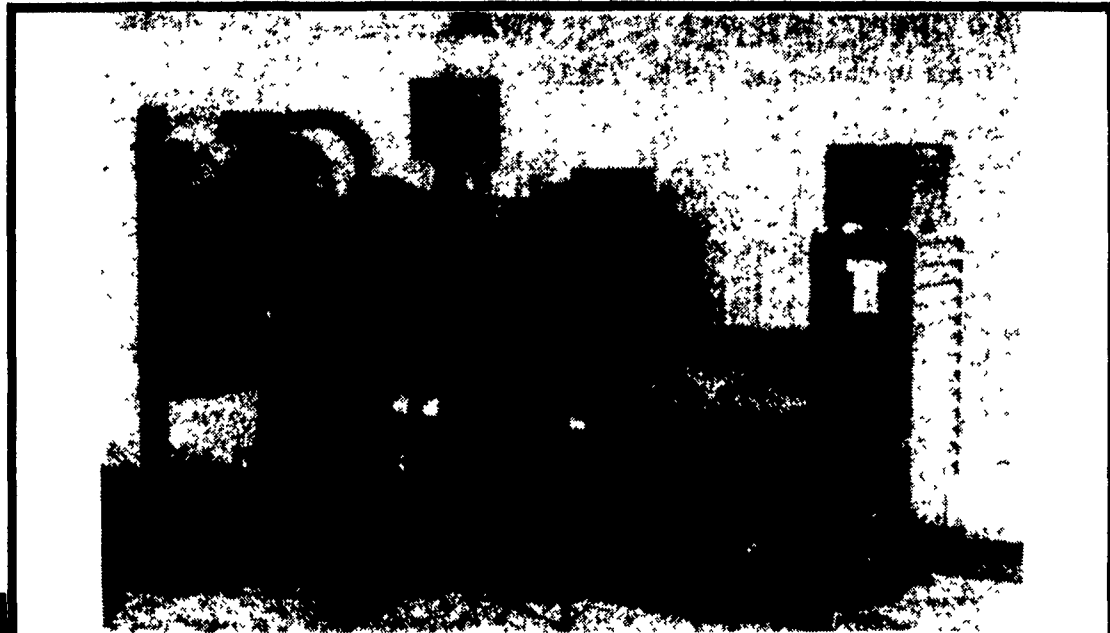


- 4 Good Low Hr. J.D. 4239T 4 Cyl. Turbo Diesel Engines For J.D. Wheel Tractors & Ind. Uses Etc. \$1,650 Each
- 1 - 30 KW Gen. Set Det. 371 Power On 2 Wheels. \$3,000
- Several Late Model 471 & 6-71 Detroit Power Units For Irrigation Or Sawmill Use, Etc.
- Several 2-3-6 Cyl. Deutz Engines & Units
- Diesel Air Compressor Sets From 1000 C.F.M. To 1200 C.F.M. J.D. Deutz & Detroit Power
- New 2 Cyl. Isuzu Diesel \$1,600 Each
- New 4 Cyl. Isuzu Diesel \$2,600 Each
- 1 - 1985 J.D. 855 Crawler Loader With Sweeps & 4 In 1 Bk. \$20,000
- Several Good 3208 CAT engines \$1800-\$2500 exchange



### Rieff Diesel

RD 1, Box 532, Lewisburg, Pa. 17837  
Telephone 717-524-7655



## THE ORIGINAL IN RELIABLE ELECTRIC POWER PLANTS

**ENGINE: ISUZU — CUMMINS — DETROIT**  
Radiator mounted on vibration dampeners • Electric Starting System • Battery Charger • Delco Maintenance-free Battery • Dry Type Air Cleaner • Exhaust Muffler

**BASE**  
Engine—generator direct connected, and mounted on common steel skid suitable for lifting.

**GENERATOR**  
Brushless • Main-line Circuit Breaker.

**CONTROL PANEL**  
Mounted on generator, with vibration dampeners, full instrumentation, automatic shutdown for high water temperature, low oil pressure, overspeed, overcrank.

**MARTIN ELECTRIC PLANTS**  
R.D. #2, Pleasant Valley Road, Ephrata, PA 17522  
Call (717) 733-7968

**BEILER ENGINE SERVICE**  
300 PENNSY ROAD  
NEW PROVIDENCE PA 17250

Need A Replacement Engine? Check These Out!

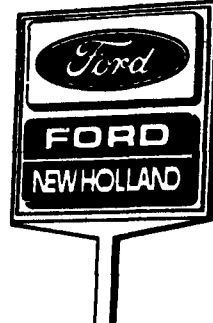
### YEAR END CLEARANCE

- New Engines**
- (1) VH4D 28 hp Wisconsin w/4-1 reduction
  - (1) VH4D 35 hp Wisconsin electric start
  - (1) VH4D 28 hp Wisconsin electric start w/generator shaft
  - 20 hp. Kawasaki w/4-1 reduction
  - 20 hp Kawasaki baler engine
- Used Engines**
- (1) THD 16.8 hp Wisconsin rebuilt
  - (1) TJD 18.2 hp Wisc. rebuilt
  - (1) VE4 20 hp Wisc (used)
  - (1) K582 23 hp Kohler (used)
  - (1) 57 hp VR4 Wisc. w/clutch (used)
  - (1) VH4D 28 hp Wisc. (like new) (off Homelite generators)
  - (1) VH4D 28 HP Wisc. rebuilt
- New Diesels**
- (1) 740 19 hp Lombardini diesel (elec. start)
  - (1) 4LD640 15 hp Lombardini diesel
  - (1) 6LD 360 8.5 hp Lombardini diesels
  - (1) 3LD 450 10 HP Lombardini diesel

FREE DELIVERY IN LANCASTER COUNTY!  
We can be contacted by phone between 7:30 & 8:00 AM at 717-786-7943.  
For emergencies call anytime and they can contact our driver.  
280 PENNSY RD., NEW PROVIDENCE, PA 17560

Ford Credit

## S.G. LEWIS & SON INC.— FOR ALL OF YOUR AGRICULTURAL, INDUSTRIAL & HOME NEEDS



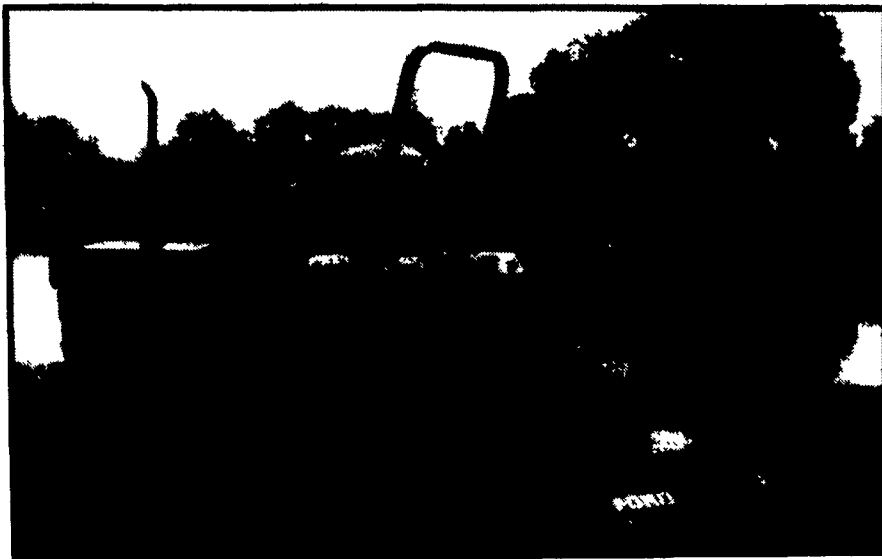
### NEW EQUIPMENT

#### FOR TRACTORS

- 1320 Tractor, Gear or Hydro.
- 1520 Tractor
- 1724 Tractor
- 1920 Tractor w/Shuttle Transmission
- 345C Industrial Tractor w/Loader
- 3910 Tractor
- 5610 Tractor (Mowers, Loader & Backhoes Available To Fit Above Models)

#### NH EQUIPMENT

- 565 Baler w/72 Thrower
- 565 Baler w/Engine or Steel
- 256 & 258 Rakes
- 488 Haybine
- 492 Haybine
- 210 ~~SOLD~~ er, 108 Bushel
- 514 Spreader, 177 Bushel
- 520 Spreader, 217 Bushel
- 680 Spreader, 287 Bushel
- 791 ~~SOLD~~ er, 360 Bushel
- 308 Slurry Spreader, 2275 Gal.
- 305 Slurry Spreader, 1225 Gal.
- 38 Crop Choppers
- 790 Forage Harvester
- 900 Forage Harvester
- 40 Blower
- 716 Forage Box w/612 Wagon
- 358 Grinder/Mixer (SPECIAL \$9500)
- 132 Bale Elevator
- 1003 Bale Wagon



### UPS SHIPMENTS EVERY DAY!!

For Sales:  
David Gibson - (215) 869-9440  
(717) 656-4341 (Res.)  
Bill Wiley - (215) 869-9440  
(717) 786-3449 (Res.)

For Service: John Steele (215) 869-2214  
For Parts: Penny or Jay (215) 869-2214

### PARTS DELIVERY AVAILABLE!!

## S. G. Lewis & Son, Inc.

AGRICULTURAL & INDUSTRIAL EQUIPMENT  
352 NO. JENNERSVILLE ROAD, WEST GROVE, PA 19380

(215) 869-9440 869-2214

### USED EQUIPMENT

- NH 326 Baler
- NH 275 Baler w/Thrower
- JD 336 Baler w/Thrower
- NH 1469 Haybine
- NH 474 Haybine
- NH 411 Discbine
- NH 442 Disc Mower
- Kuhn Disc Mower
- Woods ~~SOLD~~ 59 Rotary
- NH 258 Rake, Rubber Teeth
- JD 350 Hydro Push Spreader
- IH 550 Spreader
- NH 519 Spreader
- NH ~~SOLD~~ er, Backhoe, Cab