

Southeast And Central Virginia Area Livestock Summary

Southside (Blackstone) and Smithfield, Va.

Thursday, February 15, 1990

ALL TRENDS COMPARED TO LAST WEDNESDAY SOUTHSIDE CATTLE SOLD ON OUT WEIGHTS.
SLAUGHTER HOGS 150 HEAD - SLAUGHTER SOWS \$1.00-2.00 LOWER. BOARS 75 CENT TO \$1.25 LOWER. SOWS US 1-3 300-500 LBS 38.50-40.90 500 LBS & OVER 42.75-43.90 BOARS 33.10-37.80
SLAUGHTER CATTLE 108 HEAD - SLAUGHTER COWS STEADY TO \$2.00 HIGHER. SLAUGHTER BULLS STEADY.
SLAUGHTER COWS 93 HEAD CUTTER & BNG.UT. 1-3 48.50-57.00 BRKG.UT. & COMM. 2-4 49.00-57.00 CANNER & LOW CUTTER 1-2 42.25-47.00.
SLAUGHTER BULLS 15 HEAD: 1-2 900-1300 LBS 56.00-67.25 1-2 1300-1600 LBS 60.00-65.25 1-2 1600 LBS & OVER 66.75.
FEEDER CATTLE 524 HEAD - FEEDER STEERS, FEEDER HEIFERS AND FEEDER BULLS STEADY. STEERS; MEDIUM 1 SMALL 1 MED.&LARGE 2 300-400 103.00-104.00 94.50 98.00-99.00 400-500 88.00-95.00 93.00 82.00-92.00 500-600 85.00-88.00 --- 79.00-84.00 600-700 74.00-76.00 --- 77.00-81.75 700-800 75.00-79.50 --- 800-900 73.50 --- 900-1100 71.00-71.50 --- HOLS-

TEIN STEERS; MED.&LARGE 1-2 300-500 LBS 79.50; 500-700 LBS 62.00-66.
50 HEIFERS; MEDIUM 1 SMALL 1 MED.&LARGE 2 300-400 90.50-96.00 71.50 82.50-93.00 400-500 81.00-87.00 68.25 74.00-85.00 500-600 75.50-78.50 --- 67.00-71.50 600-700 67.00-71.00 --- 700-800 64.50 --- 800-900 62.25.

FEEDER BULLS; MED. 1 SMALL 1 MED.&LARGE 2 200-300 LBS 107.00-116.00 89.00 90.00-110.00 300-500 LBS 86.00-110.00 80.00-88.00 77.00-102.50 500-700 LBS 77.00-79.50 --- 65.00-78.00 BABY CALVES RETURNED TO FARMS 23 HEAD NEWBORN TO 4 WK OLD 42.50-92.50 PER HEAD. OVER 100 LBS 126.00-130.00 PER CWT.

Southwest Virginia Area Livestock Summary

Wytheville, Va.

Tuesday, February 13, 1990

ALL TRENDS COMPARED TO LAST TUESDAY. SLAUGHTER HOGS 27 HEAD - NO TRENDS REPORTED. BARROWS AND GILTS US 1-3 200-250 LBS 43.50 2-4 250-300 LBS 39.00-40.00 SOWS US 1-3 500 LBS & OVER 40.00-42.00 BOARS 35.00.
SLAUGHTER CATTLE 45 HEAD - NO TRENDS REPORTED. SLAUGHTER COWS 41 HEAD CUTTER & BNG.UT. 1-3 46.00-52.00 BRKG.UT. & COMM. 2-4 47.00-52.75 1 AT 54.50 CANNER & LOW CUTTER 1-2 41.00-45.00
SLAUGHTER BULLS 4 HEAD: 1-2

900-1200 LBS 55.00 1-2 1300-1600 LBS 55.00 1-2 1600 LBS & OVER 50.00-53.75 19 GOATS 19.00-55.00 PER HEAD.

FEEDER CATTLE 112 HEAD - NO TRENDS REPORTED. STEERS; MEDIUM 1 MED.&LARGE 2 300-400 89.00-90.00 --- 400-500 89.00-91.00 --- 500-600 84.00-85.50 --- 600-700 81.50-84.00 75.00-81.00 HOLSTEIN STEERS; MED.&LARGE 1-2 300-500 LBS 90.00-93.00; 500-700 LBS 67.00-76.00 900-1100 LBS 58.00 HEIFERS; MEDIUM 1 LARGE 1 MED.&LARGE 2 200-300 89.00-97.00 --- 300-400 86.50-90.00 94.00 --- 400-500 87.00-90.00 --- 79.00-81.00 500-600 79.00-84.50 --- 74.00-75.50 FEEDER BULLS; MED. 1 MED.&LARGE 2 300-500 LBS 84.00-93.50 --- 500-700 LBS --- 78.00-79.00 COWS WITH CALVES AT SIDE 4 PAIR; M-2, 7-10 YR OLD 900-1050 LBS WITH CALVES 85-150 LBS 510.00-520.00 PER PAIR. BABY CALVES RETURNED TO FARMS 21 HEAD NEWBORN TO 4 WK OLD 75.00-150.00 MOSTLY 90.00-120.00 PER HEAD.

Four States Livestock

Hagerstown, Md.

Wednesday, Feb. 14, 1990

Report supplied by Auction
SLAUGHTER COWS: UTILITY 48.00-54.00; HIGH DRESSING 54.00-57.75; CANNERS 46.00-50.00; SHELLY 46.00 DOWN.
BULLS: YG#1 1300-1800 LBS. 64.00-69.25; YG#2 59.25.
FED STEERS: HIGH CHOICE TO PRIME 75.00-78.75; SELECT TO LOW CHOICE 68.00-75.00; SELECT 64.00-69.00; STANDARD 58.00-64.00.

FED HEIFERS: HIGH CHOICE 1200 LBS. 76.75; SELECT TO LOW CHOICE 63.00-70.00.
VEAL-CALVES: CULLS 85-120 LBS. 75.00-88.00; 50-80 LBS. 65.00-75.00; WEAK AND ROUGH 65.00 DOWN.
FARM CALVES, HOLSTEIN BULLS: #1 95-125 LBS. 140.00-182.00; #2 85-110 LBS. 90.00-135.00.
HOLSTEIN HEIFERS: 95-120 LBS. 125.00-170.00; BEEF X BULLS UP TO 130.00.
BUTCHER HOGS: #1 AND 2 230-250 LBS. 49.00-51.00; #3 215-240 LBS. UP TO 47.75; 190-210 LBS. UP TO 45.25.
SOWS: 300-500 LBS. 40.00-43.50; 500-600 LBS. 42.00-45.00; THIN 35.00-39.00.
BOARS: UP TO 36.00.
STOCK CATTLE, STEERS: 300-500 LBS. 80.00-92.00; 500-700 LBS. 72.00-85.00; 700-900 LBS. 65.00-77.00; 900-1050 LBS. 60.00-72.00.
HEIFERS: 300-500 LBS. 70.00-85.00; 500-700 LBS. 65.00-78.00.
HOLSTEINS: 300-500 LBS. 80.00-103.00.
BULLS: 250-500 LBS. 75.00-88.00.
BEEF TYPE: 930-1100 LBS. 64.00-66.50; HOLSTEINS 1220 LBS. 61.75.
DAIRY REPLACEMENTS: SPRINGERS, LARGE 1000.00-1300.00; MEDIUM 700.00-950.00; FRESH LARGE 1000.00-1135.00; SMALL AND MEDIUM 635.00-800.00; SHORT BRED HEIFERS 385.00-575.00.
LAMBS: CHOICE TO PRIME 90-110 LBS. 60.00-61.00; 120 LBS. AT 57.00.
GOATS: LARGE 74.00; MEDIUM 35.00-60.00.
PIGS AND SHOATS: BY THE HEAD, 20-30 LBS. 20.00-31.00; 30-50 LBS. 34.00-47.00; 50-70 LBS. 45.00-57.00; BY

THE POUND 100-160 LBS. 40.00-44.00; 160-200 LBS. 39.00-41.00.
STOCK BOARS: 200-275 LBS. 35.00-39.50; 130-200 LBS. 35.00-45.00.
NOTE: NEXT WED., FEB 21, ONE TWO AND A HALF YEAR OLD POLLED SIMMENTAL BULL APPROX 1500 LBS. OUT OF A BLACK FACTOR BULL. PAPERS AVAILABLE.

Dewart Livestock Auction

Dewart, Pa.

Monday, February 12, 1990

Report Supplied by PDA

CATTLE 121...PDA...Compared with last Monday's market: Slaughter cows mostly Select 68.00-69.50; couple Choice Holsteins 69.75&71.25. Few Select st. heifers 62.75-71.00. Breaking Utility & Commercial st. cows 51.00-54.50, couple 57.75, Canner & Bon. Utility 51.500-55, couple 59.25, Canner & Low Cutter 45.00-48.50, Shells down to 42.75. Feeder Cattle: Medium Frame No. 1, 400/840 lbs. steers 70.25-78.25. Medium Frame No. 1, 400/650 lbs. heifers 66.00-78.00.
CALVES 190...Few Choice vealers 110.00-120.00, Standard & Good 75/100 lbs. 70.00-80.00, Utility 60/85 lbs. 62.00-72.00. Farm Calves: Holstein Bulls No. 1, 90/135 lbs. 135.00-168.00, No. 2, 85/120 lbs. 80.00-140.00; Hol. Heifers 90/135 lbs. 110.00-169.00.
HOGS 78...US 1-3 210/240 lbs. barrows and gilts 47.00-48.50, 1-3 245/260 lbs. 46.50-47.40. Few US No. 1-3 275/440 lbs. sows 40.00-44.50. Few Boars 33.00-37.75.
FEEDER PIGS 47...US No. 1-3 30/40 lbs. feeder pigs 29.00-39.00, lot 75 lbs. 42.00 --- all per head.
SHEEP 6...Few Choice 100/115 lbs. wool slaughter lambs 66.00-73.00.
GOATS 0...No Market Test.



Servicing Clients for 11 years in Integrated Pest Management, Fertility Management And Agricultural/Environmental Consulting

B.A.C.S. staff of skilled experienced Agronomists work toward increasing clients profitability while limiting adverse environmental impacts. Call us today for a free newsletter and/or a no obligation evaluation.

BRUBAKER AGRONOMIC CONSULTING SERVICES, INC.

29 Ridge Road
Llitz, PA 17543

*** 717-627-0065 ***

**Save Now With NC+ Early Order Discounts
5% Discount On Orders Booked Before March 3, 1990**

NC+ Day

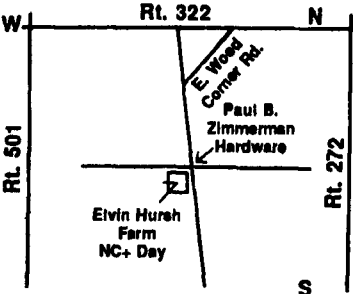


Elvin Hursh Farm

WHEN - Wed., Feb. 28
TIME - 9:00 AM, registration, coffee, doughnuts meeting starts 9:30 sharp
FREE LUNCH - 12:00 noon

TOPICS -
Update pesticide license
Ron Dodds on new corn, alfalfa, soybeans, sorghum varieties.
Hay and silage inoculants
Mike Brubaker on crop management

ADJOURN - 2:30 PM

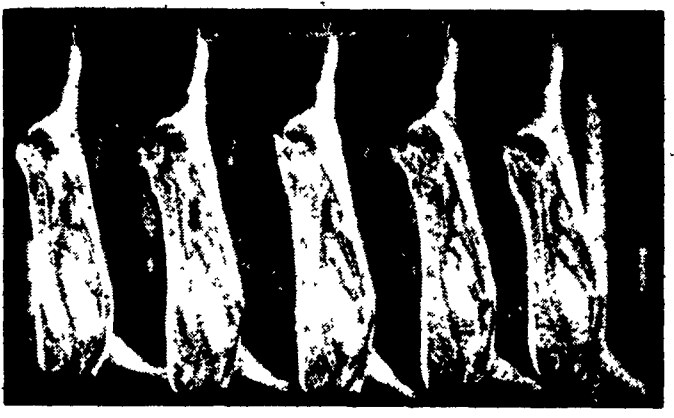


- Elvin Hursh 717-733-3538
- Nevin Kegerreis. 717-626-5469
- Leon Wessner ... 215-285-6246
- Clarence Mull 717-865-2037
- Melvin Martin 717-626-7138
- John Auker 717-933-5224

HOG FINISHING CONTRACTS AVAILABLE

We Supply -

- Healthy Feeder Pigs - P.I.C. Genetics
- Quality Feeding Program
- Management Advice
- Competitive Contract Payments

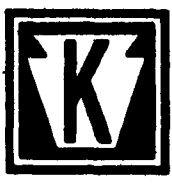


You Supply -

- Modern Confinement Facility
- Management Labor

Join our team and become a producer of lean meat.

Call - The Keystone Mills Hog Group - Today



KEYSTONE MILLS

Serving Agriculture Since 1894

R.D. 3
Ephrata, PA 17522
(717) 354-4616

1975 Route 336
Romulus, NY 14541
(315) 549-2578