

# New Cargill Corn Hybrids Available

MINNEAPOLIS, Minn. — Six new corn hybrids for spring planting are available to Eastern farmers from Cargill Hybrid Seeds.

"These hybrids passed our performance qualifications after being tested in company research plots for four years and in on-farm plots for two years," said Richard Morse, regional crops manager, Geneva, New York. "Many farmers have seen the hybrids as experimental numbers, and they now are available in limited quantities."

These following corn hybrids are available:

• Cargill Hybrid Seeds 3427 — 95-day relative maturity. This new hybrid has shown excellent yield potential, even under stressful conditions. It displays vigorous growth, stalk quality is good, and it is well adapted to cold northern soils. It is an attractive hybrid with medium plant height.

• Cargill Hybrid Seeds 3637 — 98-day relative maturity. The hybrid yields very well under good growing conditions, especially in irrigated areas. It has excellent fiber quality for silage and has a tendency to tiller.

• Cargill Hybrid Seeds 4137 — 103-day relative maturity. Very good yield potential and root quality are important characteristics of this new hybrid. It dries quickly and has a short, girthy ear. Given its determinant or fixed-ear size, it performs best under higher plant populations.

• Cargill Hybrid Seeds 5327 — 108-day relative maturity. The

hybrid has outstanding yield potential. It is medium tall and has been selected for improved cornborer resistance, good stalk quality, drydown, and overall plant health. It is a good dual-purpose hybrid.

Cargill Hybrid Seeds 8427 — 118-day relative maturity. This hybrid has very good disease tolerance, stay-green quality, and standability. It has yielded especially well east of the Mississippi River.

Cargill Hybrid Seeds 9027 — 120-day relative maturity. The tallness of this hybrid makes it a good choice for grain or silage. It has excellent yield potential under good management and good environmental conditions. The hybrid has exhibited excellent results in southern regions, where

it can take advantage of the longer growing season.

Cargill Hybrid Seeds maintains hybrid testing stations at Geneva, New York; Leola, Pennsylvania; and Greenville, North Carolina. Research personnel in addition to Morse include plant breeders Thomas Ishler and Mike Forster and research technicians Heidi MacIntyre and Randy Hegwer.

Area territory managers include Duane Pomeroy, Soda Point, New York; Carl Key, Eaton, New York; Richard Keener, Mount Joy, Pennsylvania; Jean Kayser, Camp Hill, Pennsylvania; John Hubers, Lancaster, Pennsylvania; Wainwright Land, Wilson, North Carolina; Carl Cromer, Dublin, Georgia; and John Carter, Homer, Georgia.

## Automatic Equipment

## Restructures Management

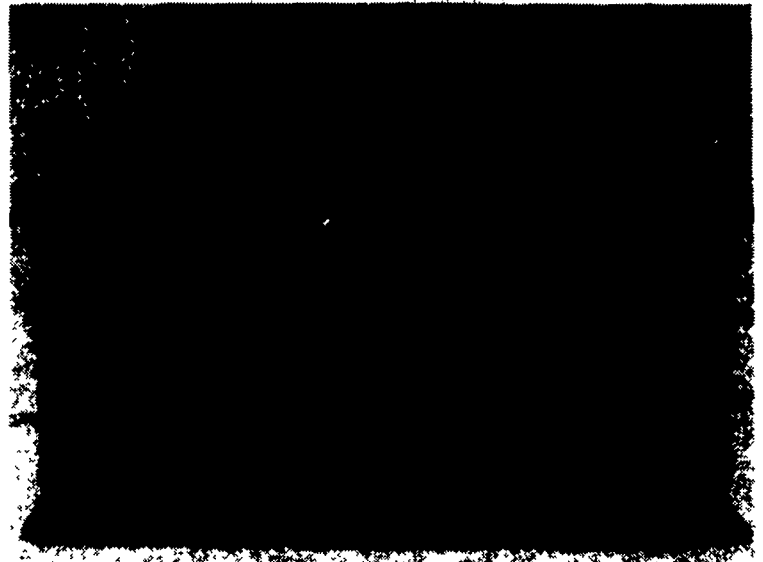
PENDER, NB P Automatic Equipment Manufacturing Company has announced a restructuring plan that will see their newly designated district sales managers' duties enlarged to include all of Automatic's product lines. Previously, the territory managers had been primarily responsible for dealer sales of agricultural products.

In their enhanced capacity, the district sales managers will oversee dealer, distributor, and OEM sales of Automatic's products in the agricultural, recreational vehi-

cle, marine, industrial, and rental industries, as well as representing Automatic's custom manufacturing division.

Jay Hesse, president of automatic Equipment said, "Our people have the product knowledge, and we have confidence that they will provide excellent support to our customers, dealers, and distributors in all the industries in which we are involved."

The district sales managers are responsible for eight districts covering the United States and Canada.



Badger Northland's energy-free waterer reduces the high cost of watering cattle, horses, hogs, and sheep by eliminating the need for electricity and the possibility of shock or stray voltage. The waterer's proven, patented design features a durable double wall which is superinsulated (R-value = 7.14 per inch) to retain the heat provided by ground water.

## Badger Northland's Waterer Reduces Cost Of Watering

KAUKAUNA, WI — An energy-free waterer designed to efficiently provide temperature-regulated drinking water for livestock through a safer, more cost-effective means than electrically-operated waterers is available from Badger Northland.

Badger Northland's energy-free waterer reduces the high cost of watering cattle, horses, hogs and sheep by eliminating the need for electricity and the possibility of shock or stray voltage. The water-

er's proven, patented design features a durable double wall which is super insulated (R-value = 7.14 per inch) to retain the heat provided by ground water. Any ground water heat that is gradually lost over time is naturally replenished by the animals' drinking activity. A minimum of 20 gallons, which waters 8 to 10 animals, will keep the unit operational even in sub-zero temperatures.

Two models are available: a 10-gallon hog waterer (38-inch x 19-inch x 20-inch) designed to handle up to 150 hogs or 120 cattle. Both models feature insulated flaps which eliminate the need for balls or floats that can ice over and pulleys or cables that eventually rust out. In addition, the unit's baffles guard against icing and keep the non-siphoning DuraPride UPI-24 valve operating under the most severe conditions.

Other features of the Badger waterer include a removable top for easy access to plumbing, a 1-inch flange for easy anchoring, and a sealed bottom to keep out moisture and prevent algae build-up. Badger engineers have also designed the new unit with a seamless sidewall body to prevent leakage and two 2-inch drain holes for fast, efficient clean out.

For more information, contact: Chet Gibbons, Badger Northland Inc., 1215 Hyland Avenue, P.O. Box 1215, Kaukauna WI 54130-9986, or call (414) 766-4603.

# STIHL®

## PEAK PERFORMER STIHL® 026

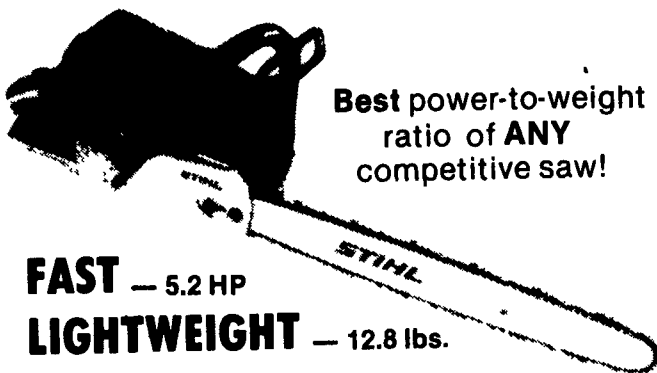


**Powerful** — 3.49 HP  
**Lightweight** — 10.4 lbs.

**Dependable** — Lifetime electronic ignition

- Cutting Edge in Technology
- Oil Saving Ecomatic System
- Quickstop Inertia Chain Brake
- Made in the U.S.A.

## THUNDER IN THE WOODS Announcing the NEW STIHL 044



**Best power-to-weight ratio of ANY competitive saw!**

**FAST** — 5.2 HP  
**LIGHTWEIGHT** — 12.8 lbs.  
**RUGGED** — H. D. Air Filter

Lifetime electronic ignition  
Anti-vibration system  
Quickstop™ Inertia Chain Brake

## See Your Local Stihl Dealer For A Demonstration

**Bechtelsville**  
PASSMORE SERVICE  
CENTER, INC.  
RD 1, Rt. 100  
215-367-9084

**Ephrata**  
WES STAUFFER  
ENGINES & EQUIPMENT  
23 Pleasant Valley Rd.  
717-738-4215

**Lebanon**  
THE FARM WORKSHOP  
1611 Fonderwhite Rd.  
717-273-9540

**Ronks**  
A & B SALES & SERVICE  
2 Miles South of Rt. 23 Along 772  
Thru Monterey - RD 1

**Elm**  
BOMBERGER'S STORE, INC.  
656 W. Newport Rd.  
717-865-2407

**Gap**  
GAP POWER EQUIPMENT  
Corner of Rt. 30 & Rt. 897  
717-442-8970

**Myerstown**  
EBLING LAWN &  
GARDEN SERVICE  
690 E. Lincoln Ave.  
717-868-8720

**Somerset, PA**  
**McCooles, MD**  
LINCOLN SUPPLY &  
EQUIPMENT CO.  
Somerset, PA 814-443-1691  
McCooles, MD 301-786-6800

**East Earl**  
GOODS LAWN & GARDEN  
CENTER  
Route 23  
717-354-4026 Ext. 34

**Hamburg**  
SHARTLESVILLE  
FARM SERVICE  
RD 1, Box 1392  
215-488-1025

**Ono**  
SHUEY'S SALES & SERVICE  
Jonestown Rd.  
717-865-4915

**Watsontown**  
BEILER'S REPAIR  
1 Mi. W. of Turbotville  
On Rt. 44  
RD 2, Box 54

**Ephrata, Hershey, Lancaster**  
HOLLINGER'S LAWN &  
GARDEN EQUIP.  
Ephrata, PA 717-738-1131  
Hershey, PA 717-533-4060  
Lancaster, PA 717-658-2710

**Jonestown**  
BLUE MOUNTAIN  
ENTERPRISES, INC.  
Rt. 72 South  
717-865-2994

**Oxford**  
OXFORD GREENLINE, INC.  
1100 Limestone Rd.  
215-932-2673

**West Chester**  
M.S. YEARSLEY & SONS  
110-120 E. Market St.  
215-696-2990

**Peach Bottom**  
WAKEFIELD SAW SHOP  
742 Nottingham Rd

Distributed By Keystone Stihl

**DON'T LOOK ANY FURTHER!**  
YOU'LL FIND IT IN LANCASTER FARMING'S CLASSIFIEDS