

Econoline

WORKING TRAILERS FOR A WORKING WORLD

ALL SIZES & CAPACITIES AVAILABLE

Hostetler Truck Bodies & Trailers
Rt. 322 Milroy, PA 17063
1-800-441-5161

1984 Ford Pickup, 150 Series, 4 speed transmission with creeper gear. 47,000 original miles. Heavy duty springs on rear. 4 new 6-ply tires. Sliding rear window. AM/FM Radio, large mirrors. Excellent Condition. Asking \$5,995.
717/284-3205

86 Chevy Truck, 6.2 liter engine, 11,000 GVW, 4 speed transmission, dual fuel tanks, aluminum running boards, aluminum headache racks, rear axle-air ride, set up for 5th wheel application. Bug shield, new tires, overhead air-shield, dual exhaust.
717/354-2529

'88 Ford Ranger XLT, 4x4, extended cab, 5 spd., AC, sharp, 31,000 miles\$9,400
'87 Chevy Custom Deluxe, V8, 4 Spd., 36,000 miles\$8,600
'87 Ford Ranger, 4 cylinder, 5 spd., 17,000 miles\$4,900
'87 Chevy Coachman Conversion Van, V8, auto, AC, 41,000 miles...\$9,800
'88 Chevy S10 pickup, 4 cylinder, 5 spd., 35,000 miles\$4,900
'87 Ford Ranger STX, V6, fuel injected, 5 spd., AC, cruise, tilt, 46,000 miles.....\$5,900
'87 Chevy Beauville Van, 12 passenger, 42,000 miles.....\$9,400
'86 Plymouth Voyager SE, 8 passenger, 81,000 miles.....\$6,800
'82 Ford Bronco XLT Lariat, V8, auto, 4x4, 79,000 miles.....\$5,900
'79 Jeep Wagoneer, 4x4, V8, auto., air, tilt, 51,000 miles\$3,800

CHEVY MOTORS
New & Rebuilt
350, 366, 427, 454
Will install
717-762-6415

1981 Marmon 236 wheel base w/36" sleeper, 400 Cummins \$18,500. 1984 Gilmore dump trailer, 34', 68" sides new brakes landing gear w/ torp \$17,000 40' flat bed trailer w/ sides, new brakes, drums and seals \$3,500. (3) 45' van trailers \$3,500 each.
(302) 934-8506

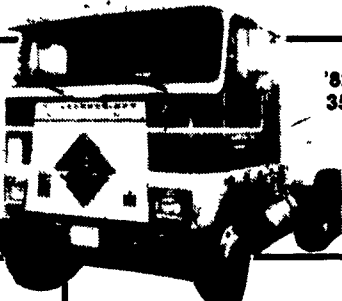
Brubaker's Auto Sales
Myerstown, PA
717-866-5237



FEBRUARY SPECIALS!
ALL UNITS MUST GO!



'85 LN700 S/A Dump New Dump Body, Hoist PTO, Fresh Paint, 28,000 GVW Diesel 5/2
\$16,900

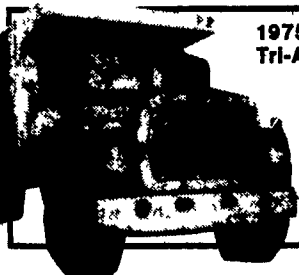
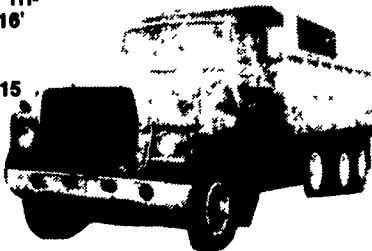


'82 IHC COF9670 GLX 350 Cat, 9 Spd., Well Maintained, Private Owner
\$15,500

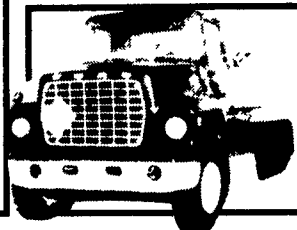
'78 LTS9000 240 Cummins BC, 15 Spd. Wetline, Dbl. Frame, Hendrickson Susp. LKong Whlbs., Low MI.
\$15,500



1972 LT9000 Tri-Axle Dump, 16' Steel Body, 671 Engine, Jake Brake, 15 Spd. w/Deep Reduction

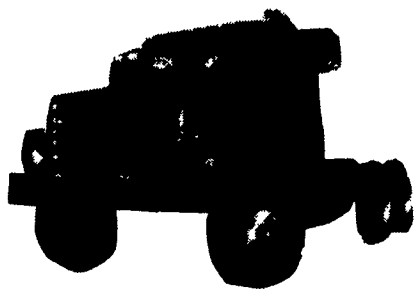


1975 Ford LNT9000 Tri-Axle Dump, Jake, 10 Spd., PS, 16 & 44's, Double Frame, 214,000 MI., 18' Alum. Dump
\$19,500



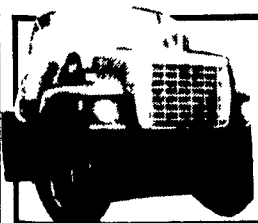
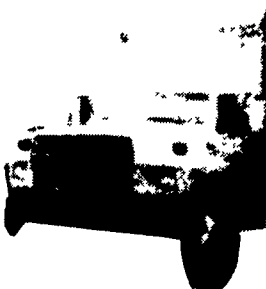
'78 LN800 391 Rbit. eng., 5/2, 34,000 GVW, Air Brakes, PS, Long Whlbs., C&C Only
\$6,995

\$11,500
1978 IHC 350 Cummins 10 spd., 12,000 front axle, 38,000 rear axle, P/S, Hendrickson Susp. #3273
\$11,500



\$8,995 \$7,000

1983 Ford V8 Gas, 5 Spd., 23,000 GVW, 22' Body #3246
\$7,000



1985 Ford LN9000, 6V92A Engine, 9 Sd., Wet Line Kit, Lift Axle, 100,000 MI. On Engine Rebuild.



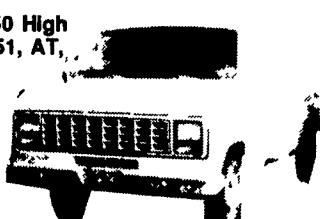
'79 Dodge Supervan Sportsman 12 Pass., 318 V8, Gas, AT, Exc. Cond.
\$4,995

'79 Chev. C-30 High Cube, 350, AT, 12 Ft. Body
\$3,500



'79 Ford E-350 High Cube Van, 351, AT, 14 Ft. Body, Good Cond.

\$4,995



KEYSTONE FORD TRUCK SALES, INC.

Interstate 83 at 322 E • PO Box 4194, 470 Penhar Road • Harrisburg, PA 17111

PAUL MYERS, SALES MGR. JON EBY, USED TRUCK MGR.
SALES REPS: BILL VOGEL, CHARLIE KRUGER & ANDY CHIKOTAS

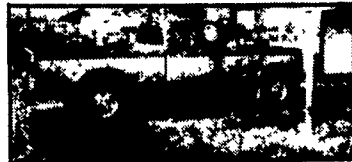
SALES 8-6 Monday-Friday
Toll Free (800) 669-6235
(717) 564-6661

Daily Rental or Leasing
Call 717-564-6661

TRUCKS ARE OUR ONLY BUSINESS



LEBANON COUNTY'S FOREMOST TRUCK SPECIALIST



'86 CHEVY S-10 EXT CAB 4x4 V6, Auto, OD, PS, PB, AC, 40,000 MI., Alloys, Beautiful, Red & Silver



'86 FORD RANGER XL 4x4 Extended Cab, 2.8L EFI V-6, Auto, PS, PB, 48,000 MI.



'85 CHEVY C-20 STARCRAFT CONV. V8, Auto., PS, PB, Dual, AC, 4 Capt. Chairs, Sofa, Bed



'88 F-350 XLT LARIAT Hot Shot Conversion, 7.3L Diesel, 5 Spd., PS, PB, AC, Cruise, Tilt, 30,000 MI.

50 USED 4x4s IN STOCK!

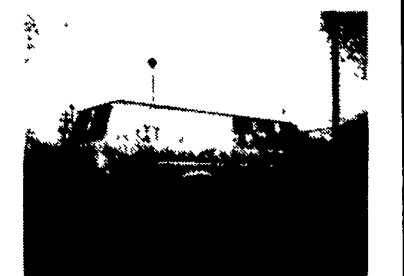


OVER 100 TRUCKS IN STOCK!

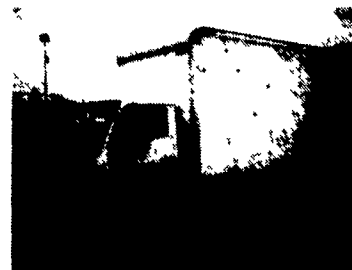
CALL BOBBY GERHART
AT: (717) 273-7995
5 POINTS
LEBANON, PA



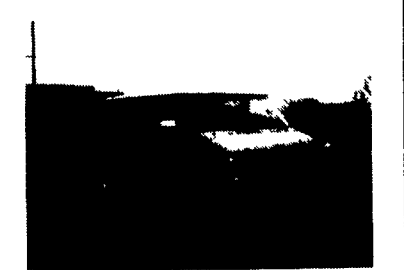
Stock #814 1989 Ford E350 Super XLT, 15 Pass., 460, AT, PS, PB, PW, PL, Tilt, Cruise, Dual AC & Heat, 36,000 Miles \$15,200
Also Available 1988 With HO351



Stock #811 1988 Ford E250 Super Cargo, HO351, AT, PS, PB, 8100 GVW, 27,000 Miles, Like New, \$9,950.
Also Available 1987 With A/C



Stock #819 1988 Mitsubishi Fusa HiCube, 14' 11,000 GVW, 3.9 Turbo, Diesel, 5 Speed, Like New, 16,000 Miles, \$11,900.



Stock #816 1987 Chev Beauville G20, 6.2 Diesel, ATO, PS, PB, PW, PL, Tilt, Cruise, Dual A/C & Heat, 18,000 Miles, \$11,800.

FOUR WAY AUTO SALES

770 West Main Street, P.O. Box 444

New Holland, PA 17557

Office 717-354-3199 Home 717-354-9422