

**Diffenbach's New Holland Auction Center, Ltd.**  
 100 WEST JACKSON ST. • BOX 485 • NEW HOLLAND, PA. 17557  
 PHONE (717) 355-7253 (717) 393-4464 (717) 354-3297

**You Can Buy**

**You Can Sell**

**HAY SALE EVERY MONDAY- 11:00 A.M.**  
 (Note - Starting Feb. 12 Hay Sale 10:00 A.M.)

**1990 SPECIAL SALES**

FEBRUARY 1990						
S	M	T	W	T	F	S
-	-	-	-	1	2	3
4	5	6	7	8	9	10
11	12	13	14	15	16	17
18	19	20	21	22	23	24
25	26	27	28	-	-	-

JULY 1990						
S	M	T	W	T	F	S
1	2	3	4	5	6	7
8	9	10	11	12	13	14
15	16	17	18	19	20	21
22	23	24	25	26	27	28
29	30	31	-	-	-	-

AUGUST 1990						
S	M	T	W	T	F	S
-	-	-	1	2	3	4
5	6	7	8	9	10	11
12	13	14	15	16	17	18
19	20	21	22	23	24	25
26	27	28	29	30	31	-

MARCH 1990						
S	M	T	W	T	F	S
-	-	-	1	2	3	4
5	6	7	8	9	10	11
12	13	14	15	16	17	18
19	20	21	22	23	24	25
26	27	28	29	30	31	-

APRIL 1990						
S	M	T	W	T	F	S
1	2	3	4	5	6	7
8	9	10	11	12	13	14
15	16	17	18	19	20	21
22	23	24	25	26	27	28
29	30	-	-	-	-	-

MAY 1990						
S	M	T	W	T	F	S
-	-	1	2	3	4	5
6	7	8	9	10	11	12
13	14	15	16	17	18	19
20	21	22	23	24	25	26
27	28	29	30	31	-	-

JUNE 1990						
S	M	T	W	T	F	S
-	-	-	1	2	3	4
5	6	7	8	9	10	11
12	13	14	15	16	17	18
19	20	21	22	23	24	25
26	27	28	29	30	31	-

- FRI FEB. 9..... 9:00 A.M. Farm Equipment & Supplies
- TUES. FEB. 13..... 10:00 A.M. Jacob P. Beiler, Kirkwood (On the farm)
- THURS. FEB. 15..... 9:00 A.M. Mervin Seibel Liquidation Auction
- FRI. FEB. 16..... 9:00 A.M. Mervin Seibel Liquidation Auction
- SAT. FEB. 17..... 9:00 A.M. Mervin Seibel Liquidation Auction
- FRI. MAR. 9..... 9:00 A.M. Farm Equipment & Supplies
- FRI. MAR. 16..... 10:00 A.M. John King, Near Rough & Tumble (On the farm)
- SAT. MAR. 17..... 10:00 A.M. Wilson Martin, Snyder Co. Dry Goods Store Sell-Out & Farm Equipment. (On the farm)
- FRI. MAR. 30..... 9:00 A.M. Farm Equipment & Supplies
- TUES. APR. 3..... 6:00 P.M. Lawn Mower & Garden Equipment
- TUES. APR. 17..... 9:00 A.M. Quilts, Crafts, & Buggies
- FRI. APR. 20..... 9:00 A.M. Farm Equipment & Supplies
- TUES. MAY 1..... 6:00 P.M. Lawn Mowers & Garden Equipment
- FRI. MAY 18..... 9:00 A.M. Farm Equipment & Supplies
- FRI. JUNE 15..... 9:00 A.M. Farm Equipment & Supplies
- SAT. JUNE 30..... 10:00 A.M. Bertha Shirk, Paradise. Real Estate, Hill Goods & Antiques. (On the premises)
- FRI. JULY 13..... 9:00 A.M. Farm Equipment & Supplies
- TUES. JULY 24..... 9:00 A.M. Quilts, Crafts, & Buggies
- FRI. AUG. 17..... 9:00 A.M. Farm Equipment & Supplies
- TUES. AUG. 28..... 6:00 P.M. Guns of all descriptions
- TUES. SEPT. 4..... 6:00 P.M. Lawn Mowers & Garden Equipment
- FRI. SEPT. 14..... 9:00 A.M. Farm Equipment & Supplies
- TUES. SEPT. 25..... 6:00 P.M. Guns of all descriptions
- SAT. OCT. 6..... 9:00 A.M. Camp Deer Park Benefit Auction
- FRI. OCT. 12..... 9:00 A.M. Farm Equipment & Supplies
- TUES. OCT. 23..... 9:00 A.M. Quilts, Crafts, & Buggies
- FRI. NOV. 9..... 9:00 A.M. Farm Equipment & Supplies
- SAT. NOV. 24..... 9:00 A.M. Toys, Crafts, Gifts, & Tools

SEPTEMBER 1990						
S	M	T	W	T	F	S
-	-	-	-	1	2	3
4	5	6	7	8	9	10
11	12	13	14	15	16	17
18	19	20	21	22	23	24
25	26	27	28	29	30	31

OCTOBER 1990						
S	M	T	W	T	F	S
-	1	2	3	4	5	6
7	8	9	10	11	12	13
14	15	16	17	18	19	20
21	22	23	24	25	26	27
28	29	30	31	-	-	-

NOVEMBER 1990						
S	M	T	W	T	F	S
-	-	-	1	2	3	4
5	6	7	8	9	10	11
12	13	14	15	16	17	18
19	20	21	22	23	24	25
26	27	28	29	30	31	-

DECEMBER 1990						
S	M	T	W	T	F	S
-	-	-	-	1	2	3
4	5	6	7	8	9	10
11	12	13	14	15	16	17
18	19	20	21	22	23	24
25	26	27	28	29	30	31

**Contact Us For Rates  
And Dates For Your Sale**

**ADD YOUR SALE TO THIS LISTING NOW!**  
**Diffenbachs Aucts. 225L**  
*Bonded Licensed Livestock Dealer and Order Buyer*

**Equipped And Ready  
To Serve You**

**NEW HOLLAND SALES STABLES INC.  
THE ACTION AUCTION**

Market Your Livestock Thru  
New Holland Sales

Pick-Up Your Check  
Before You Leave

LIVESTOCK IS OUR ONLY BUSINESS

**MONDAY**

**SLAUGHTER HOGS**

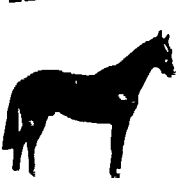


**EARLY BIRD HOG SALE  
7:30 A.M.**

Sell Your Hogs At New Holland Sales Stables, Inc.  
See them weighed, sold and pickup your check.

**10:00 AM**

**HORSES MULES**



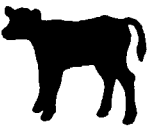
**PONIES**

**1:30 PM**

**BEEF SALE**



**SHEEP**



**GOATS**

**CALF**

**WEDNESDAY**

**DAIRY 11:00 AM COWS**  
**COW SALE 12:00 NOON**



We have the usual run of 50 to 100 Heifers, all ages.  
Loads of fresh cows and springers from our regular shippers.  
Also some local fresh cows and springers.

**1:30 P.M.  
FEEDER PIG SALE**



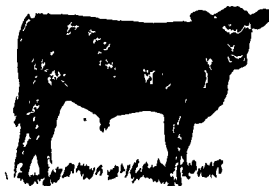
Pigs are accepted after 6:30 A.M. State graded from 8 to 12  
Dairy Barn and Feeder Pig Barn are cleaned and disinfected weekly for your protection.

**NEW HOLLAND SALES STABLES, INC.**  
 12 Miles East Of Lancaster  
 On Route 23, New Holland, Penna.  
 Norman Kolb, President 717-397-5538  
 David Kolb, Vice President  
 Roger Floyd, Sec. Treas. and Office Manager  
 717-354-4341  
 Paul Good, Order Buyer 215-445-6662  
 Field Representative  
 Luke Eberly 215-267-6606- 738-1865

**THURSDAY**

**Beef Auction  
10:00 A.M.**

**BULLS  
STEERS  
BEEF COWS**



**STOCKERS  
&  
FEEDERS**

**1:30 P.M.**

**GOATS SHEEP CALVES**

