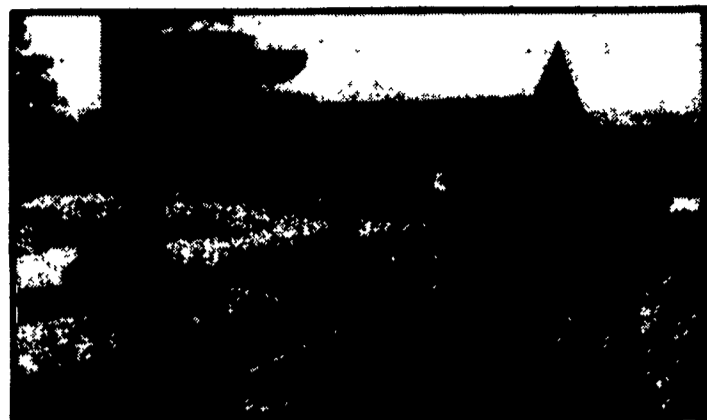


**SHELDON & ZANE HARSHBARGER  
SCENIC HILL FARMS, MIFFLINTOWN, PA**

**Didn't  
make  
our  
Harvestore®  
haylage  
tour  
last  
week?**

**Here's what you missed!**



Sheldon (left) & Zane Harshbarger

Although many herds' production went down last year because of poor quality forage, Harshbargers' production actually rose and is currently at 58 lbs. of 4% test. Their alfalfa haylage tested 19-23% crude protein



No baled hay has been fed to this herd for the past several years. Supplement is fed only to cows over 65 lbs. milk. Only 8% of the milk check goes toward purchased feed.

Harshbargers' first Harvestore haylage structure went up in 1974, and one for high moisture corn in 1975. A second forage unit was built in 1986. When the stave silo previously used for hay silage was torn down, the Harshbargers say it was one of the happiest days of their lives. Since 1974, they've never missed a feeding out of their Harvestore structures!



Sheldon Harshbarger

The results you may achieve with your Harvestore® System depend primarily upon your management skills and may vary from successful results achieved by others. Any application to a particular farming operation requires the advice of qualified experts and is subject to limitations of good management, weather and other conditions present at the individual location.



**PENN JERSEY PRODUCTS, INC.**

YOUR LOCAL INDEPENDENT AUTHORIZED HARVESTORE® SYSTEMS DEALER

P.O. BOX 7 • NEW HOLLAND, PA • 717-354-4051

SUB-STATIONS SERVING YOU FROM

Mill Creek, PA  
717-483-6940  
John Yoder, Mgr.

New Enterprise, PA  
814-766-2364  
Ken Bupp, Mgr.

**SERVICE IS THE KEY!**

Newville, PA  
717-776-3397  
Maynard McCullough,  
Mgr.

Columbus, NJ  
609-298-7136  
Charles Van Mater, Mgr.