

Dealership Celebrates 100 Years In Business

QUARRYVILLE (Lancaster Co.) — The A.L. Herr & Bro. Inc., machinery dealership in Quarryville Pa., is in its 100th year of doing business. Started by Abraham L. Herr and Clinton S. Herr, the dealership today is owned by Harold Herr (son of Clinton) and his son, Kenneth.

Abe and Clint Herr began business in a diversified manner. With headquarters being a building on State Street and the home farm at Collins (current E.M. Herr trucking location) in Colerain Township they operated a well drilling rig, custom threshing, several farms, a creamery with milk transportation, and sawmills. Much of the lumber in bridges built in the area in the early 1900's came from Abe and Clint's sawmill. In those

early days, timber was transported by teams of horses. Some of those teams hauled the machinery for the construction of the Octoraro Pumping Station in 1903, and coal to operate it in the years to follow.

Abe and Clint started selling farm machinery in 1910. As their business progressed they built the warehouse on North Church Street in Quarryville in 1915, which became the dealership for the machinery, feed, and fertilizer trade they had established and the milk trucks remained at the farm on Route 472 south of town.

In 1935, a partnership was formed which included Abe's son, Harry, and Clint's son, Edgar. When Abram and Clinton retired in 1945, Edgar and Harry carried

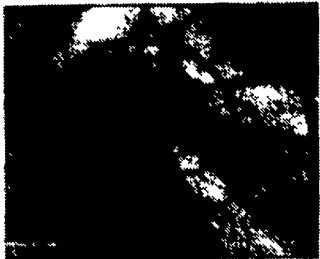
(Turn to Page A31)

A.L. Herr & Bro. Inc. employees (standing L to R) Ken Herr, Frank Pannell, Jerry Ferguson, Durwin Parks, Charles Landis, Roy Aument, Ralph McLaughlin. (Seated) Steve Herr, Shirley Crandall, Gina Miller, Kenny Miller.

The Fiberdome Difference . . .

Fiberdome's new multi-sectional fiberglass bin is ideal for a variety of uses requiring normal farm use, including high moisture corn feed rations, supplement storage, hog facilities, poultry, milking parlors and horse feeding.

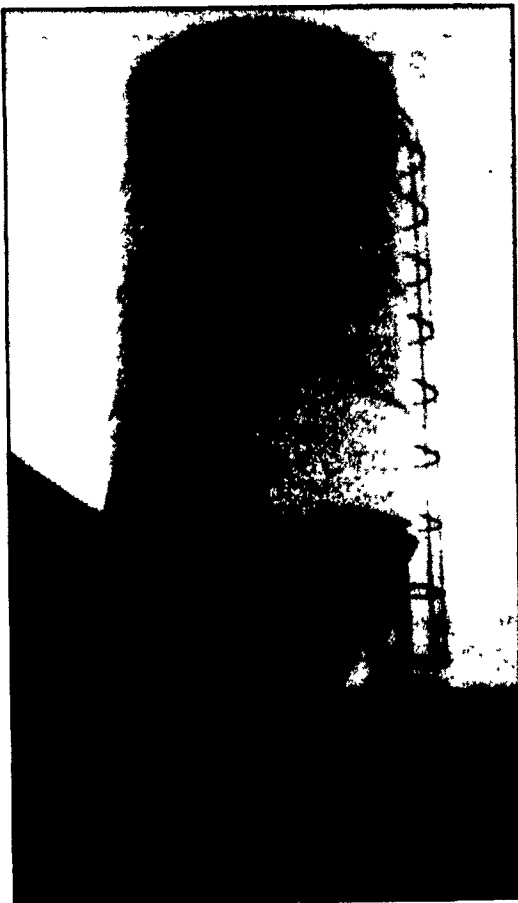
If you're thinking of feed storage, it makes sense to consider a fiberdome built storage bin which gives you the best protection available. By guarding against temperature extremes and moisture, it virtually eliminates spoilage.



Sturdy ladder system is permanently attached to the bin roof and sidewall. Optional safety cage is available with 23-29 ton bins requiring safety cage. Ladder and cage both feature zinc and yellow di-chromate coating.



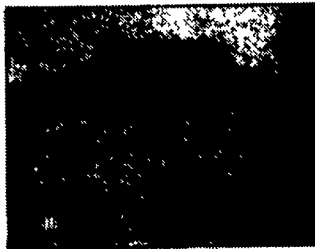
Pneumatic fill system - Fiberdome features a 4" diameter, 16 gauge fill tube, with a zinc and yellow di-chromate coating. Vent system highlights a heavy duty PVC 6" diameter, 3/16" wall. Both attached with heavy duty brackets.



12-30 Ton multi-sectional bin

Special Features - 70 degree hopper angle, lets feed flow evenly down the hopper instead of sliding down the middle. No more feed hanging up along the sides of the bin. **Huge 26" Hopper opening** - most other bins have 14" or 16" openings. Fiberdome's is the largest in the industry.

Unique 5-year warranty - We want you to have the same confidence in our product that we have. That's why your Fiberdome bulk storage bin comes with an exclusive 5-year warranty against defects in materials and workmanship under normal use. (Less Augers)



Bin legs are made from 3 1/2" diameter, 7 gauge tubing, and are supported with 1/4" steel formed saddles. Both feature zinc and yellow di-chromate coating.



Variable Degree Boot Designed and built with the flexibility to adapt to most auger angles desired.

Write for a full color brochure and a free sample of fiberglass - the modern material used for high-performing bins.

"Say goodbye to condensation, bridging, rust & corrosion."



P.O. Box 11
Lake Mills, WI 53551
(414) 648-8376

...made to last

SMOKER & COMPANY

Certified Public Accountants

- Individual, Partnership, & Corporate Taxes
- Accounting
- Tax Planning
- Auditing
- Management Consulting
- Personal Financial Services
- Computer & Consulting Services
- Payroll Preparation
- Retirement Plans

49 E. Main Street, Leola 656-7544
20 Little Beaver Rd., Strasburg 392-1333

PREPARE YOUR SOIL IMMEDIATELY WITH OUR GOOD DETOXIFYING FERTILIZER SO THAT YOUR CORN, BEANS, AND SPELTZ QUALIFY FOR THE HIGH PRICE WE PAY FOR LOW TOXIN CROPS.

If you think that the price we offer of \$12 per bu. for white soybeans, \$8 for yellow, \$3.00 for corn and \$10 per hundred lbs. for speltz is too hard to believe, then we will give you a contract for less, as low as you want to go! If you don't believe our bonus, then maybe you are one of those who doesn't believe that the all powerful Creator can keep the bugs from eating your alfalfa if you obey His blueprint, and don't mess up His program. Messed up soil produces messed up food which produces messed up consumers.

The reason we offer such a high price is because livestock feeders have learned that their livestock do so much better on organic low toxin feed, which makes a high demand, much higher than the supply. That causes the price. Cash in now before the supply catches up with the demand.

Same with produce growers. Get in on the ground floor. Get your markets established now before the others. At least condition your soil. It takes a few years to prevent lime bean beetles. But it is done. Some others are easy. We do soil testing for \$10. For a more mineral complete test, \$20. Let's do it before the rush.

ORGANIC CENTER

217 S. Railroad Ave.
New Holland, PA 17557
717-354-7064

Call 7:30 AM or maybe a little longer. Ask for Eli.

Send 50¢ (stamps OK) for eye opening literature. Mention what crops and livestock you have.