

**BRECKNOCK BUILDERS**

We are a design, build, general contractor. For high quality, Distinctive Houses on your plot or land. Our goal is to be professional & competitive without reducing quality. Experienced builders from design to completion. For free estimates & consulting.

Call 215-445-7897

Also do complete remodeling projects.

\* Specializing in Pole Buildings \*

**Kramer Construction**



Commercial • Residential  
• Agricultural  
Custom design buildings for all your needs.  
Free Estimates by Professional Builders

R.D. 2  
Stevens, PA 17578 (215) 267-3255

**S & S SILO REPAIR**

**WE DO**

- \* Most Any Kind of Stave Silo Work
  - \* Tear Down & Rebuild Stave Silos
  - \* Shotcrete Relining
  - \* New & Used Extensions
  - \* New & Used Roofs & Chutes
  - \* Unloaders (when available)
  - \* Install Silage Distributors & Fill Pipes
  - \* Repair Level Flo Silage Distributors
  - \* Silo Doors - Most Any Kind
  - \* New Ribstone Staves
- We Buy Some Stave Silos

**SHOTCRETE RELINING**

Repair Holes & Rough Silo Interiors. Make Your Old Silo Look Like New On The Inside.

RD 2, Box 91A Honey Brook., PA 19344  
215-273-3993

**FOR SALE**

3,000 Ft., 4/4 clear white pine. Rough, fresh cut. \$800 per 1,000  
2,000 ft. 4/4 Walnut rough, fresh cut. \$600 per 1,000

Also lots of pine boards at lower prices.

**S & S SAWMILL**

Rebersburg, PA 16872  
814-349-8016  
Call evenings 6 to 8 PM

**CONESTOGA BUILDING**  
S • U • P • P • L • Y



202 Orlan Rd.  
New Holland, PA 17557

717-354-2613  
1-800-544-9464

**POST FRAME BUILDING SUPPLIES**



3 Major Brands Of Steel Roofing And Siding

As Low As \$29/Sq.

We Have Horse Stall Kits, Hardware, And Lumber

Large Stock Of:

Trusses, Doors, Windows, Treated Lumber, Framing Lumber, T-1-11 Siding, Shingles

Authorized Suppliers Of



Components Company Inc.

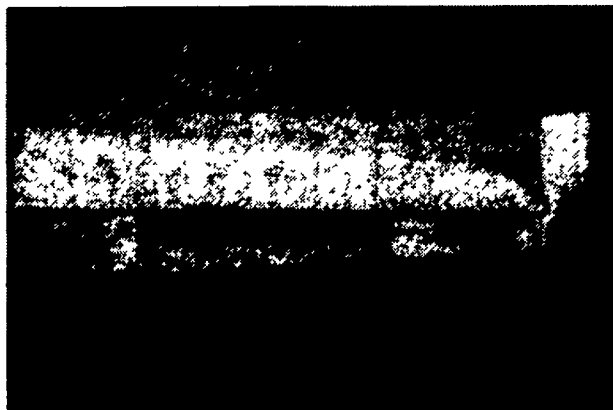


**John R. Ebersole Construction**

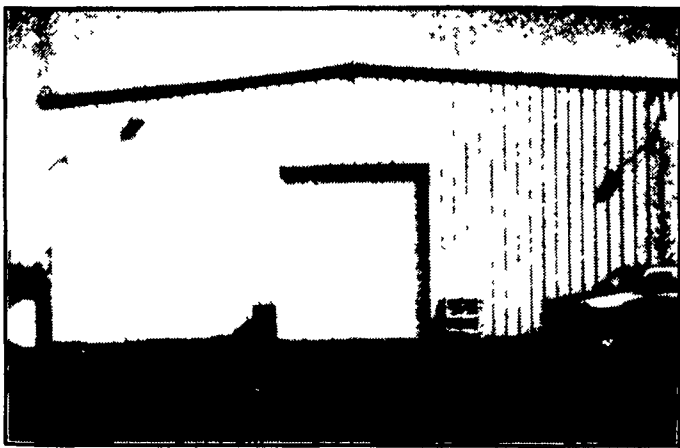
Manheim, Pa.

717-665-6861

**Complete Construction From Foundation To Finished Floor!**



Put Our 25 Years Experience To Work For You



**Steel or Pole Buildings... Farm And Commercial**

We Specialize In **DAIRY FARM BUILDINGS**

**MUSSER & ASSOCIATES, INC.**

RD #2  
Box 2881  
East Earl, PA 17519



Hours: Mon.-Fri. 7-5  
(717) 354-7561

Sales

**Come See What We Have!**

■ Round Roll NAPCO Coil Stock - White, Brown & Matching Colors.

■ Trusses Made To Order



■ Nails - Pole Barn, Commons, Painted Siding Nails

■ Barndoor Track

■ Screws

■ NAPCO Vinyl Siding

■ Insulation-Fiberglass & Rigid, Blown-In Insulation



■ Walk-In Doors & Overhead Doors

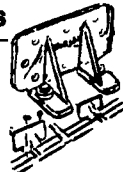
■ Concrete Mix

■ Treated Lumber



■ NAPCO Vinyl Replacement Windows

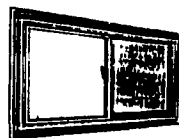
■ Sno-Jacs



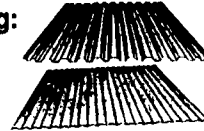
■ Spouting

■ Painted Roofing & Siding:

■ HAYFIELD Windows



WHEELING CORRUGATING COMPANY



ALUMAX BUILDING PRODUCTS



■ Aluminum Ceiling Material

AMERICAN BUILDING COMPONENTS



**GET THE MOST FOR YOUR MONEY**

Build a Pole Building  
Check Our Price.  
Custom Building Of:

- Car Garages
- Storage Barns
- Implement Sheds
- Warehouses
- Etc, Etc., Etc.

FREE ESTIMATES

**K W CONSTRUCTION**

Pole Building Specialists  
Myerstown, PA (717) 933-8294  
Quality - Our Goal

**HAYES SCOTT RUSTIC FENCE**

Manufacturers of post & rail fencing. Also, pressure treated fencing, sharpened farm stakes.

Mill Creek, WV  
304/335-2178

304/335-2606 after 6 PM  
Ask for Robert

**GRAIN EQUIPMENT And DAIRY EQUIPMENT**

Are Now In Section B

See Pages B16-B21 This Week