

WENGLERS INC.

HOURS:
MON-FRI 7:30 To 5:00
SAT 7:30 To NOON

251 SOUTH RACE STREET, MYERSTOWN, PA. 17067

PH: 717-866-2130

1-800-552-5080

FAX 717-866-4300

NIGHTS
PHONE
717-866-7147
OR
717-273-9089



1986 Case 580E 4WD Tractor Loader Backhoe, 1000 Hours, Original Paint, ROPS, Looks And Operates Very Good.

Was ~~\$27,500~~
Now \$24,500 And Must Sell



1954 Pettibone 27C Yard Crane, 6 Cylinder Chrysler Gas, 5 Ton Capacity, 16' Reach, 180' Swivel, 10x20 Tires, Only 1641 Hours, Has Been Setting And Never Used Much.

Was ~~\$8,900~~
Now \$6,900 O.B.O.



1975 Case 1150B Crawler Loader With Ripper And Cab, Good Undercarriage.

Was ~~\$17,900~~
Reduced To \$14,900 To Sell



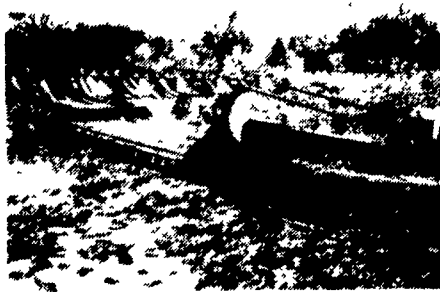
1978 Clark IT80 Forklift, 28' Lift, 8000 Lb., Gas, 10' Free Lift, 2500 Hours, 3 Stage Mast, Operating Condition.

Was ~~\$14,500~~
Now \$12,500 O.B.O.



1980 John Deere 440C Log Skidder, ROPS, New Paint, Runs Good.

\$18,500 O.B.O.



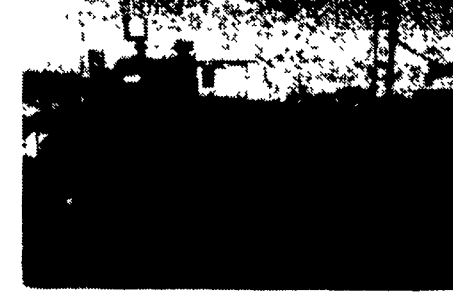
Fruehauf 35 Ton Lowboy, 16' Belly, 8' Over Tires, 22" High, 10x15 Tires, No Beavertail, Good Condition, No Title.

\$5,900 O.B.O.



1960 Ottawa 25 Ton Lowboy Trailer 15' Flat, 7' Over Tires, 5' Beavertail, Ramps, 28" High, 8.25x15 Tires.

\$5,900 O.B.O.



Wayne SK65 Stump Grinder- Runs Good, Gas Powered.

Was ~~\$8,900~~
Now \$6,900

(27) DOZERS

- (3) JD 440\$3500 to \$6900
- (2) Case 450\$4500 to \$12,500
- IH 500 Diesel 6-Way\$3900
- IH TD9-92\$3900
- JD 430\$5900
- (2) Cat D6B-Rubber\$5000
- Komatsu D30 Cab\$7900
- JD 350\$7900
- MF 300\$7900
- (2) Cat D3 6-Way\$12,900
- (2) Cat D4D\$9500-\$15,500
- (3) JD 450\$8900-\$14,900
- Cat D5\$14,500
- Case 450B 6 Way LGP 1980\$17,500
- JD 550-6 Way\$19,500
- JD 750 Ripper\$28,500
- Cat D5B\$29,500
- JD 450E\$32,500
- IH TD 25C w/Ripper\$55,000

(7) TRACTORS WITH LOADERS

- Kubota 285\$4500
- Ford 3400-Diesel 3 Pt.-PTO\$5900
- MF 40\$5900
- Ford 3000 3 Pt. PTO 1700 Hrs.\$7400
- Ford 335\$8900
- IH 260A\$9500
- Kubota 2550-4WD.\$9900

(33) CRAWLER LOADERS

- IH 340- 4 In 1\$3900
- AC HD6\$3900
- IH 500\$4900
- AC HD3\$5900
- IH 100B\$5900
- (2) JD 450\$5900-\$9900
- (2) IH 125B\$6900
- IH 250 4 In 1\$7500
- Case 350\$7900
- IH 125C\$7900
- (2) JD 350\$7900
- Case 450\$10,900
- Komatsu D31-Cab\$11,500
- Cat 951C-Cab\$12,700
- Cat 931-Cab\$12,700
- (3) Case 1150B\$11,900 to \$16,900
- (4) 450 w/ Hoe.\$11,900-\$12,900
- Case 450B\$18,500
- IH 175C\$19,500
- JD-555-Cab\$21,500
- JD 455-Cab-Hoe\$21,500
- Cat 955L\$25,500
- Case 455C\$29,500
- Cat 977L-Ripper\$36,500
- Cat 983 w/Cab\$39,500

(10) RUBBER TIRED LOADERS

- IH 500\$3900
- Hough 50C-Cab\$7500
- Waldon\$8,900
- Cat 922B-Cab-Diesel\$9,500
- Clark 75B-Cab\$18,500
- (2) Ford A62\$18,500
- Ford-A66\$18,500
- JD 544B 1980-Cab-New Tires\$26,500
- JD 644B-ROPS\$34,500

(7) SKID STEER LOADERS

- Clark 533-Diesel\$4900
- Case 1845\$7900
- Koehring 1350\$8900
- Case 1835B-Gas\$8900
- (2) Case 1845\$9900
- Koehring 2150\$11,900

MISC. CONSTRUCTION

- (100+) Used Hoe Buckets.. Come Look
- (75) Loader Buckets.. Come Look
- (75) Set Forklift Forks..... Come Look
- Ford 4500 Frost Tooth.....\$395
- 3 Pt. Hitch For Case 580\$695
- JD 640B Log Skidder Blade\$1000
- 8 HP Mortar Mixer Like New\$1150
- Ripper\$1500
- Root Rake 7'\$1600
- (2) Tree Planters\$1800
- 4-6 Ton Roller\$1900
- (7) Winch Attach ... \$1000-\$3750
- 1 Ton Overhead Crane\$2500
- Sheepsfoot Roller\$3900
- Schramm 160 Air Comp.\$3900
- Snowblower For Big Loader\$3900
- (2) Huber Maintainer\$2900 to \$5900
- (2) Sweepers\$695 to \$3900
- 2 Ton Overhead Crane\$4500
- (2) Tree Shearer. \$2900-\$4900
- Sheepsfoot Roller. \$4900
- AC D Grader\$5900
- Cat 977L Ripper.\$7500
- Construction Ramp\$8500
- Wayne Stump Grinder\$6900
- Pettibone 5 Ton Yard Crane\$6900
- Vermeer Tree Spade 44" On 4x4 Truck\$8900
- JD 760 Scraper.\$16,300

(8) LOG SKIDDERS

- Tree Farmer\$3900
- JD 440\$4900
- Pettibone PT 18\$4900
- Tree Farmer C5D\$5900
- JD 440A\$7900
- JD 640\$11,500
- JD 640 w/Grapple\$11,500
- JD 440C\$18,500

(11) TRUCKS

- (5) 1953 to 1960 Chevy Pickups.. From \$2300
- 1969 Ford Dump...\$3900
- 1971 IH 1X Dump.\$3900
- 1980 Chevy C30...\$3900
- 1982 IH Eagle Tractor\$12,800
- 1985 Ford E350 Mini Bus\$13,500
- 1970 GMC Astro w/24' Rollback\$16,500



NEW 1989 TRAILERS ON SPECIAL

- 2 Axle, 5 Ton, 14 Ft.\$1,750
- 2 Axle 5 Ton, 16 Ft.\$1,850

(20) TRAILERS

- 1X Tag-A-Long\$1250
- 1989 2-Axle 5 Ton\$1750-\$1850
- Hudson 6 Ton Tag-A-Long\$1900
- 1972 Fruehauf 43' Flat\$3900
- 1986 9 Ton Gooseneck\$4900
- 25 Ton Lowboy\$5900
- (2) 35 Ton Lowboy\$5900 to \$6900
- 1989 10 Ton Tag-A-Long\$6250
- 1989 12 Ton Elec.\$7700
- 1985 Delta 48'\$13,900

(11) FORKLIFTS

- Baker 2000 Lb. LP\$1500
- IH 2400\$2900
- White 4000 lb.\$3900
- IH 5421-21'\$5900
- White 40 LP\$5900
- Baker 4000 Lb.\$6900
- AC I-600-21'\$10,900
- Clark 8000 lb. Gas\$12,500
- Komatsu FG40 1980 8000 Lb. & Triple Mast\$14,500
- Case 586C\$18,500
- Sellick Teleporter-1984 247T. 4WD. Forks & Bucket\$22,500

(28) BACKHOES

- (9) Rigid Hoe Attachments\$2500 & Up
- (6) 3 Pt. Hoe Attachments\$3400 & Up
- Ford 600\$3900
- Case 530CK\$3900
- Case 530CK\$5900
- IH 3444\$5900
- IH 3414 Diesel\$6900
- IH 2504-Gas\$6900
- (2) Ford 4500\$4200 to \$8500
- Ford 3400 Gas 3 Pt. Hoe\$7900
- Ford 1500-4WD\$8900
- Ford 420\$8900
- Case 480B\$10,750
- JD 310A\$11,500
- Dynahoe Series 3 190\$12,500
- Case 580C w/Cab\$12,500
- JD 510\$13,500
- (2) JD 410-Cab\$13,500
- JD 410\$13,500
- JD 310A\$13,500
- Ford 555\$13,500
- JD 25 Mini Excavator\$13,500
- JD 410-4WD-1984-Cab\$18,500
- JD 310B 1986 ROPS\$19,500
- JD 410B-Cab\$21,500
- Case 480E-Cab\$24,500
- Case 580E-Super-4WD ROPS\$24,500

HUNDREDS OF
CRAWLERS & BACKHOES
FOR SALVAGE

OPEN HOUSE WEEK

February 19-24

Big Savings - Everybody Welcome

EXCELLENT SELECTION OF AFFORDABLE USED EQUIPMENT