

30 COMPUTERS

Complete computer feeder system for dual grain feeding six feeder stations 717-367-4651

Computer feeder executive selective feeder company w/250 cow chains Call 717-726-6087 after 7 p m

Prizer wood & coal cook stove, warming closet, good condition, \$150 DeLaval cream separator, \$60 717-286-2097

Riteway model 37, coal and wood stove (717)426-3135

TIRONIE'S TARPS SHIPPED ANYWHERE. 717-584-2928 anytime

Used (2) 1,000 gal UL approved propane storage tanks, built 1980, like new 717-393-2992

Hi-Bay commercial lighting, 227 volt, 250 watt, by Lithonia 717-938-9629.

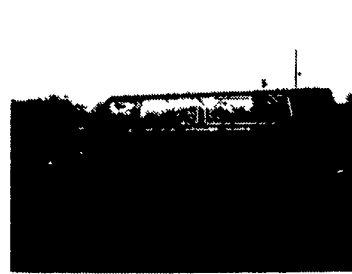
Lathe metal Delta 14x42 complete w/various parts, 3-phase, good condition, \$1,500. Bucks. (215)357-5996 after 6 p m

Meatgrinders, Bandsaws, Slicers & Tenderizers. Also, new splitting saws for only \$249 Gerry Grundy, Doyleysburg, PA, on Rte 75, 200 yards North of Rte 274 Open Saturday & Sunday 10AM-4PM 717/349-7654 or evenings 215/549-7584

PAINTED STEEL ROOFING & SIDING

• Galvanized/Galvalume
• 29/26 Gauge
• 3 Major Brands Available
• Large Stock Trim & Sheet
AS LOW AS \$29⁰⁰ per/sq.
Conestoga Building Supply
New Holland, PA 17557
717-354-2613 or 1-800-544-9464

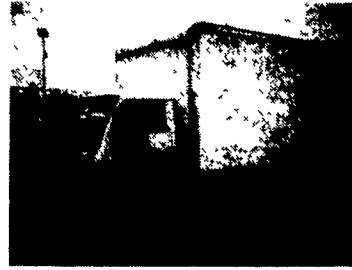
35 TRUCKS & TRAILERS



Stock #814 1989 Ford E350 Super XLT, 15 Pass., 460, AT, PS, PB, PW, PL, Tilt, Cruise, Dual AC & Heat, 36,000 Miles \$15,200 Also Available 1988 With HO351



Stock #811 1988 Ford E250 Super Cargo, HO351, AT, PS, PB, 8100 GVW, 27,000 Miles, Like New, \$9,950. Also Available 1987 With A/C



Stock #819 1988 Mitsubishi Fusa HiCube, 14' 11,000 GVW, 3.9 Turbo, Diesel, 5 Speed, Like New, 16,000 Miles, \$11,900.



Stock #816 1987 Chev Beauville G20, 6.2 Diesel, ATO, PS, PB, PW, PL, Tilt, Cruise, Dual A/C & Heat, 18,000 Miles, \$11,800.

FOUR WAY AUTO SALES

770 West Main Street, P.O. Box 444
New Holland, PA 17557

Office 717-354-3199 Home 717-354-9422

31 NOTICE

WANTED. Spreader truck and operator for work in Eastern Lancaster County Call 717-442-4171

32 MISCELLANEOUS

24" scroll saw, \$375, 12" abrasive cut off saw, \$675, wood shaper (parts or repair), \$275 All Rockwell Delta. Berks County Call (215)856-7856

(2) New England Grandfather Clocks & 18 Century PA Walnut Tavern Table 412-852-1947

6,000 lb rough terrain forklift, big air tires. 215-538-1945

Brdgewood tilting arbor, sliding table shaper, excellent condition, \$2,650. Stroke sander, 26"x70", \$850. 300 utility International tractor modified w/ forklift, \$4,500. Shp 2-stage compressor trim saw, \$145 Hand-held electric belt sander, \$55 Flat belt table sander, \$575 Lancaster County (215)593-6112

Calf Hutches, Picnic Tables, Dog Houses, Rabbit Pens, Bird Houses and Feeders, Handmade to suit you; Quality work, Reasonable Prices 717/582-8455 Perry Co

Cast Iron Snow Bird Eagles 6 1/2" wide Excellent condition Price negotiable 814-847-2696

Cushman Motor Scooter parts or restoration, \$325 Nichols hand miller, extra arbor, \$350 (215)679-2749, Buck County

FORKLIFT Electric walk-behind, runs good 215-538-1945

FOR SALE 1973 Int truck, 30,000 GVW, good condition, 8x8x16 walk-in cooler, 6x4x5 commercial cooler Berks Co 215-367-8931

Hermance #50 4x10" moulder, good condition, extra knives, \$4,500 John 301-764-1531 Baltimore

Red Hill Plumbing install air systems for farms and homes and air water pumps, also install and sell air compressors

General plumbing and repair (717) 768-7226

Red Hill Plumbing
5891 Meadville Rd.
Narvon, PA 17555

LOW-COST HEALTH INSURANCE

For Self-Employed Or Small Business, Low Group Rates - Use Any Doctor Or Hospital
717-367-2536

Do It Yourself Pest Control Supplies

Rodent & Insect Chemicals & Equipment. All name brands. Prompt, courteous service. Competitive prices. Call or write:

Hoffman Industries
3942 Frankfort Ave.
Philadelphia, PA. 19124
1-800-634-0850

I am interested in obtaining part ownership of a small meat processing operation.

Reply To Box No. D-29

Lancaster Farming
PO Box 609
Ephrata, PA 17522

MACHINE TOOLS WINTER CLEARANCE

Monarch Lathe 14/16"x30" \$1,350; Logan Lathe 10"x20" Loaded w/Tooling \$1,500, 16" Shaper \$695, Delta Surface Grinder 5"x10" \$750, 14" Vert Bandsaw \$325; (10) Drill Presses Bench & Pedestal Your Choice \$100, (5) Turret Lathes #3, #4, #5 Your Choice \$1,250 And W&S 2A \$1,750, Excello Vert Mill Vari Spd. Head \$2,350, Van Norman No. 22 & Abene Univ Mills Your Choice \$1,450 This Is Just A Sample Of Our Great Bargain Prices We Must Clear The Floor For New Merchandise. Call Tom For Further Information At **717-334-6700 or 800-366-0074**

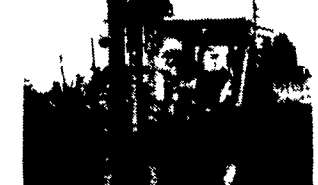
CHECK THESE OUTSTANDING BUYS!



22' Aluminum Van, Roll Up Rear Door, Good Serviceable Body \$1,000



FLAT BED All Steel With Head Board, 18' \$350 Also 14' Steel With Tool Box \$300



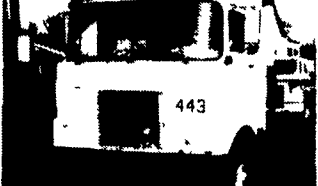
CLARK RANGER FORKLIFT 6000 Lbs. Capacity, 4 Wheel Drive, Articulating, 6 Cyl. Gas, 4 Speeds Forward & Reverse, 15x19.5 Flotation Tires, Low Hours, Government Surplus \$2,900



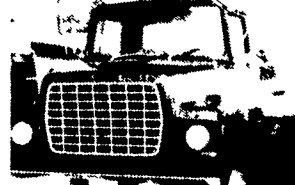
1978 FORD LN9000 Tandem TT, Silver 6V92T, (No Miles On Major), RT 9509 Trans., 34 Rears, Power Steering, Air Cond., New Paint REDUCED TO \$9,950



1982 GMC Brigadier Single Axle TT, No Miles On Rebuilt 6V92T Detroit, RT9509 Trans, R170 Rear, New Paint Reduced \$10,900



1978 MACK F-MODEL TANDEM TRACTOR, 237 Maxidync, 5 Speed, 38,000 Rears, Radials, Very Sound Mechanically \$5,000



1982 FORD LN9000 SA TT, 6-17 Detroit, 9 speed, R170 Rear, 11R 24.5 Radials on Budds, New Paint, Clean low miles \$9,950



1975 DODGE C800 Cab & Chassis, 1150 CAT, 5 Speed, 2 Speed, Air Brakes, 30,000 GVW, Good Inexpensive Farm Truck \$3,500



1979 INTERNATIONAL 1854 Series, DT466, 5 Speed, 2 Speed, PS, 30,000 GVW, Could Be A Great Farm Truck \$6,500



BEVERAGE BODIES Side Loaders, All Steel, Excellent Inexpensive Storage, 18', 19', 20', 21' & 24' Lengths, Priced From \$250 to \$300

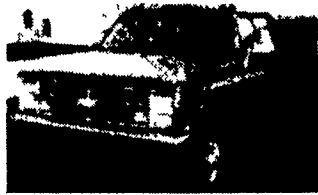


1985 MACK MIDLINER MS 200 with 22' Morgan Van, Power Steering, Radial Tires, 29,500 GVW, Very Clean \$11,900

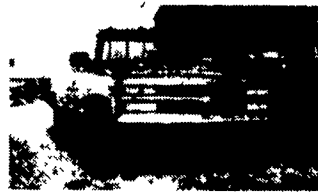


1977 INTERNATIONAL 1750 DUMP, D170, 5 Speed, 2 Speed, Air Brakes, Central Hydraulic System, New Paint, 27,500 GVW \$7,900

USED TRUCKS



1988 Chevy Silverado 4x4, Crew Cab, AT, PS, PB, AM-FM Cass., Cruise, Tilt, AC, 350 FI, 29,000 Miles, Bedliner, Exc. Cond \$14,400



1988 Chevy Extended Cab 4x4, AT, PS, PB, AM-FM Cass., AC, Cruise, Tilt, PW, PDL, 454 Engine, Blue & Silver, 37,000 Miles, Like New. \$14,900

MARTIN'S AUTO SALES

Financing Available!

725 E. Main St., New Holland, PA 17557
Office (717) 354-9967 or (215) 445-4519

FIRESTONE MOTORS, INC.

330 S. THIRD ST. • LEMOYNE, PA 17043 • (717) 763-7721