

**35 TRUCKS & TRAILERS**

'79-Marmon COE, DB 4 00B C RTO12515 SQHP411 Neway Aluminum Hubs, Wheels Will sell whole or parts 215-445-5615

'81 Ford Bronco, 1 owner, very nice Dauphin County (717)238-4545

'86 Dodge 350 Royal 15 passenger Maxi Van, 318, auto, PB, PS, cruise, tilt, dual air & heat, AM-FM stereo, 41,000 miles, charcoal, excellent condition, \$9,995 717-733-2873

'87 Dodge 150 pickup, low mileage, cap, automatic, full size bed AM-FM \$6,500 Phone 717-273-6018

'87 Ford F250 3/4 ton super cab, 300 EFI, 4 spd, PS, PB, AM-FM, dual tanks, 8,600 GVW, 32,000 miles, excellent condition, \$9,600 717-733-2873

'87 Ford XLT Lariat F250, 4x4, 300 EFI, 4 spd, PS, PB, AM-FM cassette, dual tanks, lock-out hubs, blue & silver, excellent condition, \$9,300 717-733-2873

'87 Ford XLT Lariat F350, 4x4, 460 auto, PB, PS, cruise, tilt, air, AM-FM, dual tanks, lock-out hubs, 9,000 GVW, 29,000 miles, like new, \$12,700 717-733-2873

'87 GMC High Sierra 2500, HD, 3/4 ton w/new Reading utility body, 350 EFI, auto, PB, PS, air, AM-FM stereo, 8,600 GVW, 17,000 miles, like new, \$11,995 717-733-2873

'88 Chevy 2500, 3/4 ton, 350 EFI, 5 spd, PS, PB, AM-FM, 10,000 miles, like new, \$8,950 717-733-2873

'88 Chevy 3500, 1 ton pickup, 350 EFI, 4 spd, PS, PB, 8,600 GVW, blue, 11,000 miles, excellent condition, \$9,950 717-733-2873

'88 Chevy C30 w/12' stake body w/1,800 lb fold away power lift gate, 350, auto, PB, PS, 4,000 miles, like new, \$13,900 717-733-2873

'88 Chevy Silverado 2500, 3/4 ton, 6.2 liter diesel w/new Reading utility body, PS, PB, 24,000 miles, excellent condition, \$10,995 717-733-2873

'88 Ford F150, HD, 3/4 ton, 300 EFI, HD 4 spd, PS, PB, AM-FM, dual tanks, 6,250 GVW, 15,000 miles, blue, \$7,950 717-733-2873

'88 Ford F250, 3/4 ton w/new Reading utility body, 302 EFI, 5 spd, PS, PB, AM-FM, dual tanks, 25,000 miles, excellent condition, \$11,900 717-733-2873

'88 Ford XL F150, super cab, 300 EFI, 5 spd, PS, PB, AM-FM, dual tanks, 6,250 GVW, blue & silver, excellent condition, \$9,950 717-733-2873

'88 Ford XLT Lariat F150, super cab, 302 EFI, 5 spd, PS, PB, cruise, tilt, air, AM-FM, dual tanks, 6,250 GVW, dark blue, 26,000 miles, excellent condition, \$11,500 717-733-2873

'88 Ford XLT Lariat F350, dually, 460 EFI, auto, PB, PS, PW, PDL, cruise, tilt, air, AM-FM cassette stereo, dual tanks, 20,000 miles, black & silver, excellent condition, \$13,900 717-733-2873

1978 GMC Truck 17,500 GVW with Utility Box, Metal Hood and Fenders Bad engine Excellent for Parts \$500 412/539-2849

1979 Dodge 300 cab, chassis, 4x4, 360, P/S, P/B, air, dual tanks, 10,000GVW, 50,000miles, PTO, \$2,250 (717)733-1682

1979 Int S-1600 grain truck w/new motor, new grain bed & hoist, \$8,900 717-733-4583

1981 Ford LT8000, new CATV8, new paint, 22' box, 3/4 ton left floor and gate, nice truck, best over \$6500 (215)347-9721

1986 GMC Sierra 6 2 diesel, AT, PS, PB, one owner, running boards, bed liner, 48,000 mi \$6,900 717-354-9967.

1987 Chevy crew cab, dual wheel conversion, AT, PS, PB, AM-FM Cass, PW, PDL, cruise and tilt, CB, 454 Engine, like new, 41,000 mi \$16,300 717-354-9967

1987 Ford F250 XL 4x4, 460 auto, air, 10'wide aluminum wheels, 37,000 miles Set up for Gooseneck Trailer Sharp! \$11,900 Best Offer 717/664-4587

1988 Chevy Silverado, Ext Cab, 4x4, AT, PS, PB, AM-FM Cass, air, cruise, tilt, PW, PDL, 454 Engine, 36,000 mi Exc. condition \$14,900 717-354-9967.

1988 Chevy crew cab, 4x4, AT, PS, PB, AM-FM, Air, 350 FI, 29,000 mi Excellent condition. \$14,900 717-354-9967

1988 XLT Lariat F-150, 300 EFI, 4spd, P/S, P/B, Cruise, A/C, tilt, AM/FM, dual tanks, 6250 GVW, liner, rear sliding window and more Grey. 1 owner. 36,000 miles. Excellent condition \$8,700 717/456-7409

F250 1984 Ford diesel truck w/flatbed, \$6,200/OBO. Must Sell 215-273-9993

20' steel flatbed, 10' dump bed 5yards large assortment of rough cut lumber 1/2 price 392 Int. engine Cecil. (301)287-9352.

22' Cherokee stock trailer, new running gear. (315)539-9016

24' Van Body Duralite, lift tailgate, excellent condition, \$2,400 301-797-3921

250 Cummins engine w/10 speed Road Ranger transmission Engine in truck runs excellent Can be heard \$1,200 Call Jorama Ranch (717)649-5133

6,000 lb rough terrain forklift, big air tires 215-538-1945

'71 Ford F350 dump truck Dauphin County (717)469-0588

'73 Chevy Truck, V8, 350 cu in, 4 barrel, automatic, PS, PB, 71,000 original miles, 17,000 lb GVW, 16' cattle body, good shape in and out \$3,000 717-528-8375

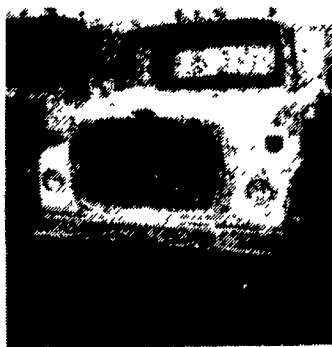
'75 Int 1800 dump truck, rebuilt 4-stage hydraulic cylinders, new tires 345 engine, air brakes, 30,000 GVW, large dump box, \$6,200 or Best Offer 717-275-3212

'76 Ford Window Van, V8, Automatic, runs fair, fair tires, \$250 GMC 1 ton stake body truck, V6, \$175 Meyers snow plow, 7'6" with frame and hydraulic lift, excellent condition, \$375 215-968-1812

**McDONNELL DOUGLAS TRUCK SERVICES INC.**

Lancaster, PA • (717) 569-2648 • Ray Leed

USED TRUCK CENTER



85 LN7000 FORD, 3208 Cat, 5 & 2 Spd, P/S, 28,000 GVW 16' C&C Selling Price \$11,900



86 F700 FORD 8 2 Liter Diesel, 5 Spd, P/S, A/C, 28,000 GVW, 20' C&C, Very Clean Selling Price \$9,800



84 IHC, S1654, 6.9 Liter, 5 Spd., P/S, 21,500 GVW, 20' C&C, Low Mileage Selling Price \$6,500



85 MACK MS200P, 10 Spd., P/S, Air/ Hyd Brakes, 24' C&C, Low Mileage, Very Clean Selling Price \$10,000



84 MACK R686ST, 300 Mack, 5 Spd, P/S, A/C, Camel Back Susp., 36' Slp, Priced To Sell At \$21,000



78 MACK R-Model, Mack 237, 5 Spd., No P/S, Very Clean Single Axle, Priced To Sell At \$8,900

**OTHER MAKES & MODELS TO CHOOSE FROM**

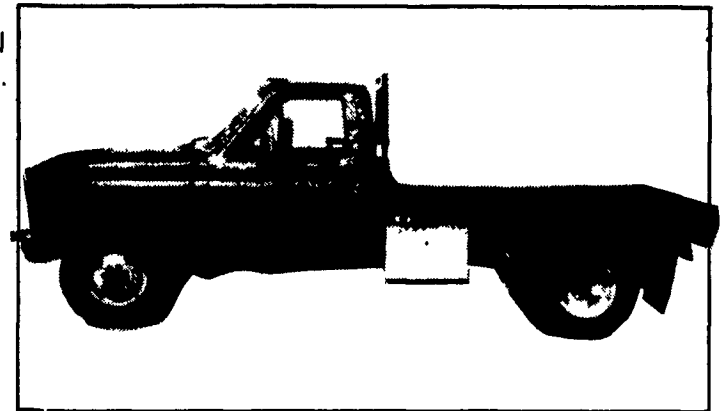


**Truck Bodies from Omaha Standard**

Omaha Standard has engineered and built the toughest all-purpose body on the market. The "Badger" is rugged enough to withstand heavy day-in and day-out use. These attractive, light-weight bodies offer you the best value available today for your 1/2, 3/4 or 1-ton chassis. Optional gooseneck style hinged access door with drawbar.

**"BADGER" Features and Specifications**

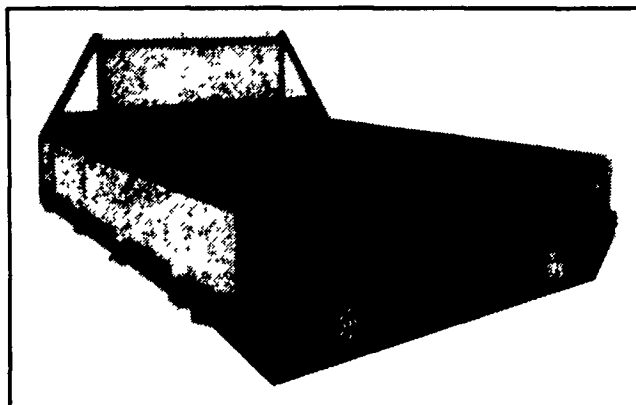
- 12 gauge (nom. 1/8" thk.) treadplate steel deck with integral formed side rails.
- 3-1/2" channel cross members.
- 4" structural channel long members.
- ICC approved armored clearance lights and reflectors.
- Stake pockets on 24" centers.
- Heavy-duty 3/8" x 2-1/2" rub rails.
- 12 gauge (nom. 1/8" thk.) treadplate steel reinforced rear apron with three-light cluster.
- Heavy-duty square tube contoured bulkhead with 12 gauge (nom. 1/8" thk.) lower panel and heavy expanded metal upper panel.
- Bulkhead is welded and gusseted to platform and designed to accept 12" sideboards.



- Painted black.
- Optional equipment: gooseneck style hinged access door with drawbar.

**Specifications**

MODEL	LENGTH	WIDTH	C.A.	APPROX. WEIGHT
B8N	8'	82"	54"-60"	556 lbs
B8W	8'	91"	60"	604 lbs.
B9	9'	91"	60"	708 lbs
B11	11'	91"	84"	841 lbs
B12	12'	91"	84"	957 lbs



**All Sizes In Stock  
Prices Starting at \$949<sup>00</sup>  
Installation Available**

1987 Int. Model 9370 (Eagle), tri-axle dump, 44K rears, 350 Cummins, 8 SP w/lo-hole, 45,000 miles, A/C, 16 c.y. Real beauty. \$58,500

**Lattimore Construction  
717/828-2544**

717-354-2150

**FARMERSVILLE EQUIPMENT**  
R.D.4, East Farmersville Road, Ephrata, PA 17522

717-354-2150