

Red Hill Plumbing install air systems for farms and homes and air water pumps, also install and sell air compressors  
 General plumbing and repair  
 (717) 768-7226  
**Red Hill Plumbing**  
 5891 Meadville Rd.  
 Narvon, PA 17555

I am interested in obtaining part ownership of a small meat processing operation.

Reply To  
 Box No. D-29

Lancaster Farming  
 PO Box 609  
 Ephrata, PA 17522

**IF YOU NEED A SNOW PLOW or Snow Plow Parts**  
**E.M. Kutz, Inc. Has It!**  
 Call in by 12 noon — will be shipped same day UPS



& WESTERN PARTS

**E.M. KUTZ, INC.**  
**READING, PA**  
**215-775-3528**

Large Supply of Cutting Edges In Stock  
 Complete Line of Truck Equipment

FOR SALE: 1984 Int. B1700, gas, 4 spd., 18' Van body, 21,700 GVW, 28,000 mile, \$9,500. Martin Hardware, Schaefferstown, Lebanon Co., Pa. 717-949-6817, 949-2549 DLR.

FOR SALE BY OWNER. 79 Eby hog & cattle trailer, 45'x8' wide inside, removable double deck, drop ramps, side door, two outside drop ramps 215-488-1746

For Sale: Transfer Trailers, all sizes; Demolition Dumps; Used trucks, agricultural dump bodies & trailers, economy grain dumps, rollbacks & log trailers. Keith walking floors, sold & serviced 814-623-9696 or 814-623-8696

GMC model 7500 series grain truck, 5 speed transmission, 2 speed rear, air brakes, power steering, good rubber, 36,000 GVW, 16' grain body w/15 ton hoist. Must see to appreciate! Phone evenings (717)786-1119.

1972 INT. 1310 w/ Schwartz rollback hyd. winch & Ag tow bar, \$4,500. Erb & Henry Equip. Co. Inc. 215-367-2169

1973 Ford Louisville truck, dump bed w/operating winch, 20' bed, great for hauling, \$5,500 (717)354-2613

Landscape Trailers: 1988 MGS trailer, dual axles, 18x6 1/2' bed, 3 1/2 ton capacity; 1986 MGS trailer, dual axles, 14x6 1/2' bed, 3 1/2 ton capacity. Both excellent condition. 215-643-7551

New Mitsubishi diesel engine, 100hp, \$2,200 or BO. Ford 300 parts, crank shaft, head, etc. Isuzu 2.2 liter diesel parts, crank shaft, block head; 1.8 liter diesel head. GM toroflo diesel for parts Smucker's Repair Shop, 94 Summit Hill Drive, Strasburg, PA

Rear cut-off 44,000 lbs., \$1,500., 18,000 lb. front axle, \$450. from 1980 Paystar w/80,000 miles York Co. 717-382-4881

TRONIE'S TARPS. SHIPPED ANYWHERE 717-584-2928 anytime.

Trailer, 1974 9 ton Eager Beaver, bed 18'x8', \$1,500 301-948-9661.

Van bodies for storage or mounting on trucks. Berks Co. 215-286-9537.

WANTED: Steel dump body, 17' w/hoist, complete, must be good 215-663-9221

Wolverine 8 ton tandem axle gooseneck trailer w/20' Diamond plate bed, 6' deck over new paint, good rubber, \$2,300. 609-859-1735

35 TRUCKS & TRAILERS

Going Out Of Business Sale

- 1 small Meat Grinder
  - 1 Biro Meat Grinder 5 horsepower
  - 1 US Meat Slicer
  - 1 Hobart Steak Master
  - 1 Glass Top Freezer
  - 1 Dairy Case
  - 1 Open Case
  - 1 Meat Case Old Safe
  - Meat Rollers - Track to walk-in cooler
- Must be out of present location till 1-31-1990

Call (717) 632-5271 or (717) 637-9012

**FREEDOM**



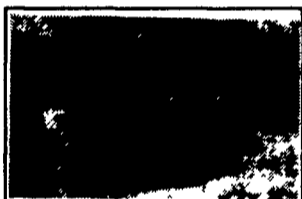
OF EPHRATA  
 USED TRUCK CENTER

**JANUARY CLEARANCE SALE**

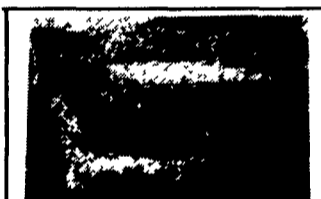
See Us Now For The Best Deals On The Finest Selection Of Pre-Owned Trucks In Central PA!!

\$1500 MINIMUM TRADE IN\*

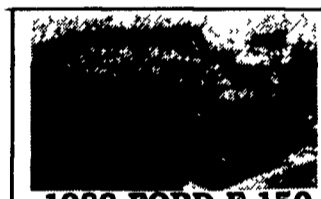
100% FULL LIMITED WARRANTY ON ELIGIBLE TRUCKS



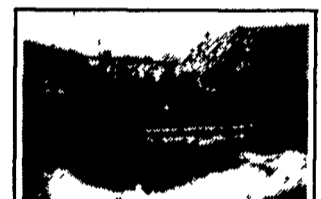
**1987 CHEVY C-10 SCOTTSDALE**  
 V8, automatic, stereo, wheel covers, step bumper, stereo, air condition, 1 owner, 19,000 miles, excellent condition.  
**\$8,795**



**1986 FORD F-150 XL SUPERCAB**  
 V8, automatic, stereo, cruise control, tu-tone, step bumper, cloth seat trim, one owner with 26,000 miles, the nicest 86 around.  
**\$9,195**



**1988 FORD F-150 LARIAT SUPERCAB**  
 V8, automatic, stereo, tilt wheel, cruise control, tu-tone, step bumper, cloth seats, one owner with 28,000 miles, like new, top of the line.  
**\$12,495**



**1988 FORD F-250 4x4**  
 6 cylinder, 5 speed, stereo, gauges, carpeting, step bumper, accent stripes, sliding window, one owner with low miles, must see!  
**\$11,495**



**1988 F-250 4x4 SUPERCAB**  
 7.3L diesel, automatic, XL trim, tilt wheel, cruise control, cassette, air conditioning, bed liner, running boards. A hard to find truck at a great price  
**\$12,495**



**1986 FORD F-150 XL**  
 V8, automatic, stereo, tilt wheel, cruise control, cap, tu-tone, cloth seat, one owner trade in, fine condition  
**\$8,495**



**1986 FORD F-150 4x4**  
 XL trim, tu-tone, cassette, 302 V8, 4 speed, tilt wheel, cruise control, sport wheels, 1 owner, new truck trade  
**\$8,495**



**1987 FORD RANGER 4x4**  
 Supercab, XLT, V6, 5 speed, air conditioning, deluxe wheels, tu-tone paint, bedliner, AM/FM cassette  
**\$8,795**

**1973 FORD F-600 CHASSIS**  
 Call For Details!

**1986 DODGE D-150 ROYAL SE**  
 V8, automatic, stereo, power windows/locks, cruise control, step bumper, tu-tone, wheel covers, loaded with equipment and like new  
**\$6,595**

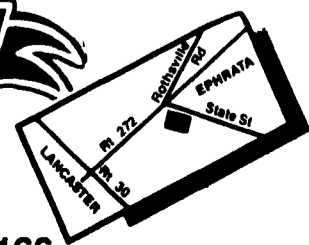
\* Included In Sale Price

**FREEDOM**



of EPHRATA  
 RT. 272 & STATE ST

EPHRATA - 733-2297 LANCASTER - 626-9166



FOR SALE  
**600 PALLETS**  
 14"x30" Reasonable Call  
**Reist Seed Co.**  
 Mt. Joy, PA  
 717-653-8078

34 AUTOS

1980 Impala Diesel Station Wagon, 3 seats, Black \$1250. 717/263-8091

1983 Mustang convertible GLX, V8, 5 speed standard, black w/white top and interior, excellent condition, \$5,595. Call Jorama Ranch, (717)649-5133.

'83 Buick Regal, V-6, air, half vinyl roof, excellent condition. Inspection 'til 11-90. Asking \$2,995 215-536-0912.

'88 Chevy Cavalier, 4 door wagon, auto., 4 cyl., excellent condition Inspection 'til 11-90. Asking \$4,795 215-536-0912.

33 RECREATIONAL VEHICLES

FOR SALE: 1980 Polaris 340L, new condition; 1988 Polaris 400 Trail Indy, many extras, new condition 717/426-3135

1980 Ski-doo snow mobile, model number 7500, 340 c/c engine, great shape, low mileage, \$1,000 OBO (201)439-2566.

35 TRUCKS & TRAILERS

'89 Chevy Cheyenne 2500 HD, 1/2 ton, 350 EFI, auto., PB, PS, AM-FM stereo, 8,600 GVW, maroon & silver, 6,000 miles, like new, \$11,900 717-733-2873

'89 Chevy Scottsdale 2500, 3/4 ton extended cab, 350 EFI, 4 spd., PS, PB, air, AM-FM cassette, cruise, tilt, red & silver, 9,000 miles, like new, \$12,500. 717-733-2873

Fisher power angle snow plow, complete, fits '87 Ford & newer F250 or F350, excellent condition, \$975. 717-733-2873

CUSHIONED HITCHES AND BUMPERS. Receiver Hitches. Reasonable prices and shipping. 717-865-7240.

Dump trailer 28' steel, \$7,500.; Dump trailer 26' steel, \$5,000.; Dump trailer 28' alum., \$5,000.; R model Mack T/axle wet line, \$6,800.; Case 530 backhoe loader diesel, \$4,500 Call evening 6:00 p.m. 215-944-9871

FORKLIFT: Electric walk-behind, runs good 215-538-1945

FOR SALE: 16' steel flat bed w/hyd. tailgate, 3 1/2 steel side, good condition. Tioga Co. 717-724-5800

FOR SALE: 1989 Chevy 2500 Scottsdale pickup, 5 spd., 12,000 mile, blue, \$10,500.; 1988 Ford F350, 460 EFI, 5 spd., 11,000 GVW, 12' stake bed w/sides, \$10,800. Martin Hardware, Schaefferstown, Lebanon Co., Pa. 717-949-6817, 949-2549 DLR.