

Diffenbach's New Holland Auction Center, Ltd.
 100 WEST JACKSON ST. • BOX 485 • NEW HOLLAND, PA. 17557
 PHONE (717) 355-7253 (717) 393-4464 (717) 354-3297

You Can Buy

You Can Sell

HAY SALE EVERY MONDAY- 11:00 A.M.

1990 SPECIAL SALES

| JANUARY 1990 | | | | | | |
|--------------|----|----|----|----|----|----|
| S | M | T | W | T | F | S |
| - | 1 | 2 | 3 | 4 | 5 | 6 |
| 7 | 8 | 9 | 10 | 11 | 12 | 13 |
| 14 | 15 | 16 | 17 | 18 | 19 | 20 |
| 21 | 22 | 23 | 24 | 25 | 26 | 27 |
| 28 | 29 | 30 | 31 | - | - | - |

| FEBRUARY 1990 | | | | | | |
|---------------|----|----|----|----|----|----|
| S | M | T | W | T | F | S |
| - | - | - | - | 1 | 2 | 3 |
| 4 | 5 | 6 | 7 | 8 | 9 | 10 |
| 11 | 12 | 13 | 14 | 15 | 16 | 17 |
| 18 | 19 | 20 | 21 | 22 | 23 | 24 |
| 25 | 26 | 27 | 28 | - | - | - |

| JULY 1990 | | | | | | |
|-----------|----|----|----|----|----|----|
| S | M | T | W | T | F | S |
| 1 | 2 | 3 | 4 | 5 | 6 | 7 |
| 8 | 9 | 10 | 11 | 12 | 13 | 14 |
| 15 | 16 | 17 | 18 | 19 | 20 | 21 |
| 22 | 23 | 24 | 25 | 26 | 27 | 28 |
| 29 | 30 | 31 | - | - | - | - |

| AUGUST 1990 | | | | | | |
|-------------|----|----|----|----|----|----|
| S | M | T | W | T | F | S |
| - | - | - | 1 | 2 | 3 | 4 |
| 5 | 6 | 7 | 8 | 9 | 10 | 11 |
| 12 | 13 | 14 | 15 | 16 | 17 | 18 |
| 19 | 20 | 21 | 22 | 23 | 24 | 25 |
| 26 | 27 | 28 | 29 | 30 | 31 | - |

| MARCH 1990 | | | | | | |
|------------|----|----|----|----|----|----|
| S | M | T | W | T | F | S |
| - | - | - | - | 1 | 2 | 3 |
| 4 | 5 | 6 | 7 | 8 | 9 | 10 |
| 11 | 12 | 13 | 14 | 15 | 16 | 17 |
| 18 | 19 | 20 | 21 | 22 | 23 | 24 |
| 25 | 26 | 27 | 28 | 29 | 30 | 31 |

| APRIL 1990 | | | | | | |
|------------|----|----|----|----|----|----|
| S | M | T | W | T | F | S |
| 1 | 2 | 3 | 4 | 5 | 6 | 7 |
| 8 | 9 | 10 | 11 | 12 | 13 | 14 |
| 15 | 16 | 17 | 18 | 19 | 20 | 21 |
| 22 | 23 | 24 | 25 | 26 | 27 | 28 |
| 29 | 30 | - | - | - | - | - |

| SEPTEMBER 1990 | | | | | | |
|----------------|----|----|----|----|----|----|
| S | M | T | W | T | F | S |
| - | - | - | - | - | 1 | 2 |
| 3 | 4 | 5 | 6 | 7 | 8 | 9 |
| 10 | 11 | 12 | 13 | 14 | 15 | 16 |
| 17 | 18 | 19 | 20 | 21 | 22 | 23 |
| 24 | 25 | 26 | 27 | 28 | 29 | 30 |

| OCTOBER 1990 | | | | | | |
|--------------|----|----|----|----|----|----|
| S | M | T | W | T | F | S |
| - | - | - | - | - | - | 1 |
| 2 | 3 | 4 | 5 | 6 | 7 | 8 |
| 9 | 10 | 11 | 12 | 13 | 14 | 15 |
| 16 | 17 | 18 | 19 | 20 | 21 | 22 |
| 23 | 24 | 25 | 26 | 27 | 28 | 29 |
| 30 | 31 | - | - | - | - | - |

| MAY 1990 | | | | | | |
|----------|----|----|----|----|----|----|
| S | M | T | W | T | F | S |
| - | - | 1 | 2 | 3 | 4 | 5 |
| 6 | 7 | 8 | 9 | 10 | 11 | 12 |
| 13 | 14 | 15 | 16 | 17 | 18 | 19 |
| 20 | 21 | 22 | 23 | 24 | 25 | 26 |
| 27 | 28 | 29 | 30 | 31 | - | - |

| JUNE 1990 | | | | | | |
|-----------|----|----|----|----|----|----|
| S | M | T | W | T | F | S |
| - | - | - | - | - | 1 | 2 |
| 3 | 4 | 5 | 6 | 7 | 8 | 9 |
| 10 | 11 | 12 | 13 | 14 | 15 | 16 |
| 17 | 18 | 19 | 20 | 21 | 22 | 23 |
| 24 | 25 | 26 | 27 | 28 | 29 | 30 |

| NOVEMBER 1990 | | | | | | |
|---------------|----|----|----|----|----|----|
| S | M | T | W | T | F | S |
| - | - | - | - | - | 1 | 2 |
| 3 | 4 | 5 | 6 | 7 | 8 | 9 |
| 10 | 11 | 12 | 13 | 14 | 15 | 16 |
| 17 | 18 | 19 | 20 | 21 | 22 | 23 |
| 24 | 25 | 26 | 27 | 28 | 29 | 30 |

| DECEMBER 1990 | | | | | | |
|---------------|----|----|----|----|----|----|
| S | M | T | W | T | F | S |
| - | - | - | - | - | - | 1 |
| 2 | 3 | 4 | 5 | 6 | 7 | 8 |
| 9 | 10 | 11 | 12 | 13 | 14 | 15 |
| 16 | 17 | 18 | 19 | 20 | 21 | 22 |
| 23 | 24 | 25 | 26 | 27 | 28 | 29 |
| 30 | 31 | - | - | - | - | - |

- SAT. JAN. 20 10:00 A.M. Fannie Forry, Don Stoltzfus & Others
- TUES. JAN. 23 10:00 A.M. Abner G. Stoltzfus, South of Bartville. (On the farm)
- SAT. JAN. 27 10:00 A.M. Joseph S. Kauffman, Bell Rd., Nine Points. (On the farm)
- TUES. JAN. 30 9:00 A.M. Quilts, Crafts, & Buggies
- FRI. FEB. 9 9:00 A.M. Farm Equipment & Supplies
- TUES. FEB. 13 10:00 A.M. Jacob P. Beiler, Kirkwood (On the farm)
- THURS. FEB. 15 9:00 A.M. Mervin Seibel Liquidation Auction
- FRI. FEB. 16 9:00 A.M. Mervin Seibel Liquidation Auction
- SAT. FEB. 17 9:00 A.M. Mervin Seibel Liquidation Auction
- FRI. MAR. 9 9:00 A.M. Farm Equipment & Supplies
- TUES. MAR. 16 10:00 A.M. John King, Near Rough & Tumble (On the farm)
- FRI. MAR. 30 9:00 A.M. Farm Equipment & Supplies
- TUES. APR. 3 6:00 P.M. Lawn Mower & Garden Equipment
- TUES. APR. 17 9:00 A.M. Quilts, Crafts, & Buggies
- FRI. APR. 20 9:00 A.M. Farm Equipment & Supplies
- TUES. MAY 1 6:00 P.M. Lawn Mowers & Garden Equipment
- FRI. MAY 18 9:00 A.M. Farm Equipment & Supplies
- FRI. JUNE 15 9:00 A.M. Farm Equipment & Supplies
- FRI. JULY 13 9:00 A.M. Farm Equipment & Supplies
- TUES. JULY 24 9:00 A.M. Quilts, Crafts, & Buggies
- FRI. AUG. 17 9:00 A.M. Farm Equipment & Supplies
- TUES. AUG. 28 6:00 P.M. Guns of all descriptions
- TUES. SEPT. 4 6:00 P.M. Lawn Mowers & Garden Equipment
- FRI. SEPT. 14 9:00 A.M. Farm Equipment & Supplies
- TUES. SEPT. 25 6:00 P.M. Guns of all descriptions
- SAT. OCT. 6 9:00 A.M. Camp Deer Park Benefit Auction
- FRI. OCT. 12 9:00 A.M. Farm Equipment & Supplies
- TUES. OCT. 23 9:00 A.M. Quilts, Crafts, & Buggies
- FRI. NOV. 9 9:00 A.M. Farm Equipment & Supplies
- SAT. NOV. 24 9:00 A.M. Toys, Crafts, Gifts, & Tools

**Contact Us For Rates
And Dates For Your Sale**

**Equipped And Ready
To Serve You**

ADD YOUR SALE TO THIS LISTING NOW!
Diffenbachs Aucts. 225L
Bonded Licensed Livestock Dealer and Order Buyer

**NEW HOLLAND SALES STABLES INC.
THE ACTION AUCTION**

Market Your Livestock Thru
New Holland Sales

Pick-Up Your Check
Before You Leave

LIVESTOCK IS OUR ONLY BUSINESS

MONDAY

SLAUGHTER HOGS

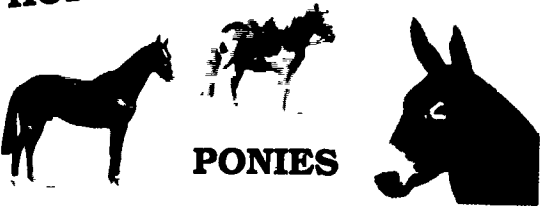


**EARLY BIRD HOG SALE
7:30 A.M.**

Sell Your Hogs At New Holland Sales Stables, Inc.
See them weighed, sold and pickup your check.

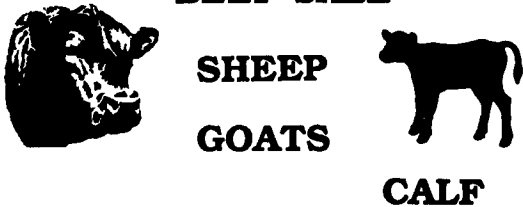
10:00 AM

HORSES MULES



PONIES

**1:30 PM
BEEF SALE**



SHEEP

GOATS

CALF

WEDNESDAY

DAIRY 11:00 AM COWS
COW SALE 12:00 NOON



We have the usual run of 50 to 100 Heifers, all ages.
Loads of fresh cows and springers from our regular shippers.
Also some local fresh cows and springers.

**1:30 P.M.
FEEDER PIG SALE**



Pigs are accepted after 6:30 A.M. State graded from 8 to 12
Dairy Barn and Feeder Pig Barn are cleaned and disinfected weekly for your protection.

NEW HOLLAND SALES STABLES, INC.
 12 Miles East Of Lancaster
 On Route 23, New Holland, Penna.
 Norman Kolb, President 717-397-5538
 David Kolb, Vice President
 Roger Floyd, Sec. Treas. and Office Manager
 717-354-4341
 Paul Good, Order Buyer 215-445-6662
 Field Representative
 Luke Eberly 215-267-6608- 738-1865

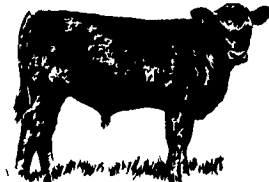
THURSDAY

**Beef Auction
10:00 A.M.**

BULLS STEERS



BEEF COWS



STOCKERS & FEEDERS

1:30 P.M.

GOATS SHEEP CALVES

