

**Public Auction Register**

Closing Date Monday 5:00 P.M.  
of each week's publication

MON FEB 19 - 11AM, Potato Farm Equipment, at St Henry's, Ohio, along the Indiana State Line, Stucke Farms, Inc., owners, Pirrung Auctioneers, Inc., Auctions

TUES FEB 20 - 9AM, Full Line of FE & Livestock, located 1 mi E of Inter-course between Rt 340 and 772 on Field Crest Lane, Abram S and Salome E Beiler, owners, Robert E and Jeffrey R Martin, Auctions

TUES FEB 20 - 9:30AM, Full line of farm machinery, 3 pair of draft horses, 25 ewe sheep, milking equip., AC XT190 tractor on steel, located N of Cains, Lanc Co, PA, David L and Lydia Stoltzfus, owners, Steve and Steve, Jr Petersheim, Auctions

TUES FEB 20 - 10AM, A Good Line of Farm Mach and Clean Up Items, located in Millfin Co., 1 mi W of Belleville, PA, along Rt 305, Norman and Anna Mary Hostetter, owners, Mark Glick, Auct

WED FEB 21 - 9AM, Farm Machinery, Mules, HH Goods, located along Forest Hill Rd, Leola, take Rt 23 E of Lancaster approx 6 mi., at Johannings Store turn N on Forest Hill Rd. for approx 1 mi., farm at left, Jonas K and Sarah L King, owners, Ron Funk and Gordon Ressler, Auctions

WED FEB 21 - 11AM, Herd Dispersal, 70 head registered and high grad Holsteins, 100% Home Raised, Vaccinated, DHIA rolling herd av 19,000 milk, 699 fat, located 1 mi SE of Strasburg, Ses Creek Holsteins, John F and Fannie Stoltzfus, owners, Steve and Steve, Jr Petersheim, Auctions

THURS FEB 22 AND FRI FEB 23 - 9AM Each Day, Antique Tractors, Engines, New, Used and abuse farm equip., 10 mi E of Lancaster, 2 1/2 mi W of New Holland, turn off Rt 23 on S Groffdale Rd, turn left on Musser School Rd, Lanc Co, PA, Elias S Beiler, owner, Robert E Martin and Son, Blaine Rentzel & Son, Auctions

THURS FEB 22 - 9:30AM, Complete Dairy Herd and Farm Mach Dispersal, located RD 1, Millersburg, PA, Mr and Mrs Stephen B Stoltzfus, owners, Bryan Imes, Auct

FRI FEB 23, State Graded Feeder Pig Sale, Exit 12 East off I-81, Carlisle Livestock Market, 717-249-4511

FRI FEB 23, Farm Equip, just W of Lessport, PA, near Ontaulaunee Grange, Berks Co, PA, Charles & Margaret Strause, owners, Ralph W Zettlemoyer Auction Co., Inc., Auctions

FRI FEB 23, Dairy Herd Dispersal and Farm Machinery, RD 1, Winfield, PA, Alvin M Oberholtzer & Family, owners, Kling's Auctions, Inc., Sale Mgrs

FRI FEB 23 - 9AM, Horses, Dairy Cattle, a good line of machinery, etc., located in Huntingdon Co., 2 mi S of Allensville, PA, along Jack's Mt Rd, Mr and Mrs Joe Detweiler, owners, Mark Glick, Auct

SAT FEB 24, Complete Line of Farm Machinery, Carlisle, PA, Galen Byers, owner, Kling's Auctions, Inc., Sale Mgrs

SAT FEB 24, Sixteenth Annual Public Sale, Farm Equipment, Tools, Household goods, etc., By Straburg Fire Co

SAT FEB 24, Farm Equip, near Fogelsville, PA, Lehigh Co, PA, Kenneth & Jane Long, owners,

Ralph W Zettlemoyer Auction Co., Inc., Auctions

SAT FEB 24, Farm Mach, Tractors, Small Items, etc., 3 mi E of Jersey Shore, PA along Pine Run Rd, William Farms, owners, Fraley Auction Co., Auctions

SAT FEB 24 - 9AM, Consignment Sale, Frederick Fairgrounds, Frederick, MD, Equine Service of Maryland

SAT FEB 24 - 9AM, Farm Equipment, for Rockhill Bros, Lumberton, NJ, Allen Nixon, Auction

SAT FEB 24 - 9AM, Farm Machinery, Some HH Items

and Furniture, located in Millfin Co., turn off Rt. 655 Midway between Reedsville and Belleville, PA onto Barville Rd. travel 1 mi., Josie A Hostetter, owner, Mark Glick, Auct

SAT FEB 24 - 11AM, Dairy Herd and Farm Equip, located along Witwer Rd, Lanc Co, PA, 1 mi SE of Blue Ball, Elvin and Martha Nolt, owners, Paul W and LeRoy S Horst, Auctions

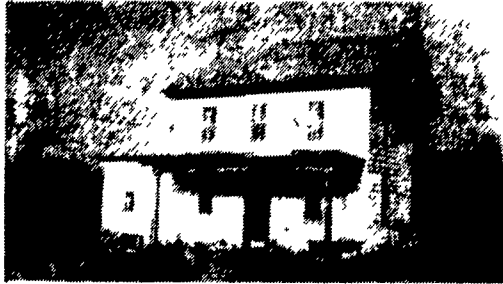
SAT FEB 24 - 11AM, Real Estate and Personal Property, at 289 Jacobs Rd, Narvon, Salisbury Twp, Lanc Co, PA, between Rt 340 and 322, Ross S and Pamela J Wanner, owners, Horning Farm Agency, Alvin Horning, Auctions

TUES FEB 27, Dairy Herd Dispersal & Farm Machinery, Newville, PA, Donald Halter, owner, Kling's Auctions, Inc., Sale Mgrs

**PUBLIC AUCTION SATURDAY, MARCH 10, 1990**

At 11:30 A.M.

1 mile SW of GRATZ; 6 miles NE of Elizabethtown; along the Gratz to Loyalton Road in Lykens Township, Upper Dauphin County, PA. 71 ACRES, more or less. Small Stream.



4-Bedroom Dwelling, 1 1/2 Baths, Drilled Well, Oil Hot Water Heat. If you are looking for a Lykens Valley Farm in high state of cultivation, you will call 717-365-3516 immediately to inspect this property. After inspection, ARRANGE YOUR FINANCING & BE PREPARED TO BID & BUY AT THE AUCTION!

TERMS: 10% down the day of sale, further terms and conditions to be announced when real estate is offered at 1:00 P.M.

Also selling: ANTIQUES, COLLECTIBLES & OTHER PERSONAL PROPERTY

**BRUCE "MICK" KISSINGER & BETTY KISSINGER**  
Owners

Earl Richard Etweller,  
Attorney-at-law

**DEIBERT** Mike, Auctioneer AU1599-L  
George, Realtor & Auctioneer AU209-L  
(717) 425-3313

**PUBLIC AUCTION**

**4 TRACTORS, 1974 DODGE 600 DUMP TRUCK, HAYING & FARM EQUIPMENT; GRAIN DRYER**

**SAT. FEB. 10, 1990 AT 10 AM**

Located along Rt. 512 between Bath & Windgap in the Village of Moorestown, Northampton Co., Pa. Follow Rt. 22 to Bethlehem, turn North onto Rt. 512, proceed 11 miles to Auction OR take Rt. 33, turn South on Rt. 512 at Windgap, proceed to Auction.

**TRACTORS & TRUCK**

2 JD 4230 tractors w/dual hyd outlets (1 w/Quad Range & 1 w/Syncro); Ford 4600 SU 3 cyl diesel w/3 pt & dual hyd outlets & canvas enclosure cab; Ford 772 twin cyl loader for same w/loader bucket & manure fork; Farmall Super M, 2 r culti for same; 1974 Dodge 600 w/15' Knaphide metal dump body w/cattle sides, 4 spd w/2 spd rear.

**HAYING EQUIPMENT**

JD 347 twine tie hay baler w/40 ejector (3 yrs. old); NH 489 haybine; NH 258 hay rake; Kuhn 17' 6" hay tedder; 6 NH, Bale King & JD- 6T, 8T & 10T - 16' & 18' bale side wagons.

**TILLAGE EQUIPMENT**

Int 720- 5 btm 16" spring reset plow; Ford 142 - 5 btm 16" semi mt spring reset plow w/hyd side hill; JD 3 btm 16" trailer trip plow; Brady 10' chisel plow; 14' Bush Hog transport disc w/buster bar.

**PLANTING, HARVESTING & FEEDING EQUIPMENT, ETC.**

JD 7000 Conser. corn planter w/liquid or dry fert; JD 8300 - 18 dbl disc Big Box grain drill w/grass attach; Century 500 gal 12 r weed sprayer w/inline tank; Ford 3 pt 4 r tool bar cultivator; NI 319 w/#322 - 12 roll husking bed 2 r mt corn husker; GT 570 bu PTO batch grain dryer; 5 Demco, Little Giant, Parker & E-Z trail bin wagons; Grove w.t. 6T hyd dump trailer w/grain sides; (2) 8' 2 whl hand dump trailers; 13' 2 whl trailer; Little Giant drag elevator; 4", 6" & 16' grain augers w/motors; 1500 bu Behlen rd wire corn crib; Brillion 12' mod FS 1445 flail stalk shredder (1 yr old); NH 36 crop chopper; Wood Bros. 72" rotary cutter; NH 510 - 163 bu single beater manure spreader w/liquid pan; JD 3 pt 8' blade; Grove 6T chassis w/bunk feeder; bale feeder; 1T port steer self-feeder; 3 rd hog self-feeders; 5 stall calf hutch on skids; calf & hog boxes; metal cattle gates; (15) 4'-10' ci water troughs; 5 rolls 4 pt barb wire; treated fence posts & stakes; 1000 gal & 1500 gal poly fert tanks; 6 fuel tanks w/pumps; 2 platform scales; fast hitch carrier; JD & other hyd cylinders; 28" tractor tire chains; plus many other items.

Terms--Cash or Check  
AUCT. NOTE: Equip. in good cond. & stored under roof. Starting w/sm items, larger equip. after 12 Noon.

Ordered By

**RONALD MUSCHLITZ**

Conducted by  
Ralph W. Zettlemoyer Auction Co., Inc.  
215-395-8084  
Pa. License #AU-001809-L  
Refreshments Available

**PUBLIC AUCTION HORSES, FARM MACHINERY, APP. 100 TON CORN SATURDAY, FEBRUARY 3, 1990**

10:00 A.M.

Located from Lancaster, Pa. take Rt. 222 South to Main St., New Providence, go through the town, turn West on Truce Rd. Take the first left after the Elementary School. Or 1 mile North of the Buck, turn East on Truce Rd., approx. 2 miles. 6 DAPPLE GRAY PERCHERONS 2, 3, 5 & 8 YEARS OLD, 3-YEAR-OLD REG. MORGAN, TWO 5-YEAR-OLD HALF MORGANS

10 sets harness, bridles & collars; 2, 4, 6, 8 horse hitches; 2 fore carts; 2 horse bob sled, market wagon

**2 SC CASE TRACTORS ON STEEL**

White Horse 2 way hyd. plow; Oliver transport disc on rubber; steel roller; JD 9' harrow; cultmulcher; JD & McCormick cultivators; 7000 4 row JD corn planter dry & liquid fert. attachment; 32' JD 300 elevator; David Bradley bin wagon; self unloading grain wagon; ground driven corn binder; JD 8' grain binder; fodder shredder, Little Giant corn drag; 400 ft. 3" flex auger; Cardinal pto grain auger; Farm Bilt flatbed wagon w/slip in tongue; No 9 McCormick 7' grass mower; 311 NI 2 row corn picker, Elam Stoltzfus liquid manure spreader; JD spreader for parts; Fricks 28 threshing machine; long Ebersoll feeder; Fricks 8x10 traction engine; one horse tobacco sprayer pump w/engine, like new.

4500 tobacco lath; shears; 2 homemade double baling boxes; 8x8 reinforced concrete slabs; 2 scalding troughs, 1 excellent; preg. tester for hogs or sheep; app. 12 various size Maryland type hog panels; 2 wheelbarrows, 1 w/two wheels; feed grinding set-up; 2 platform scales; 3/4 hhp Fairbanks gas engine, open spokes, flywheels in running cond.; 5/4 hhp slow speed Bamford diesel engine, running cond.; Honda 3 hhp. engine; 8 hhp. Kawasaki engine, Stoltzfus legume pump; wood furnace w/steam boiler; SS steam kettle; SS seed bed steaming pans; scrap metal, two wagon loads of small items.

SALE ORDER: Starting with small items, machinery and horses. Refreshments available. No out of state checks.

Terms by

**BENUEL B.**

**& ELIZABETH ESCH**

Auctioneers Conducting Sale:  
Lloyd Kreider (AU000513L), 717-786-3394  
Randal Kline, Roy Good, Gary Shirk



**KREIDER & KLINE AUCTION SERVICE**

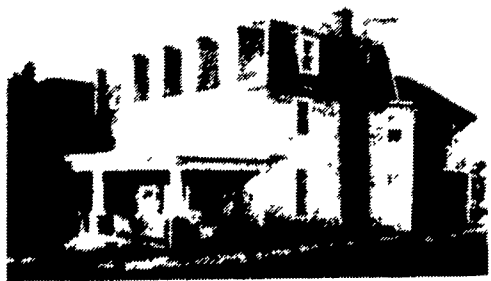
INVESTORS HOME BUYERS

**PUBLIC AUCTION**

**4 UNIT APARTMENT HOUSE SAT., JANUARY 27, 1990**

Auction Time 11:00 A.M.

LOCATION: 52-54 East Chestnut St., Ephrata, PA. From square, take North State St., 3 blocks to Chestnut, go 1 block to property on left.



ALL UNITS CONTAIN: Kitchen, living room, 2 bedrooms & bath. Coin operated laundry in basement. Oil fired hot water heat.

- \* Public Water
- \* Public Sewer
- \* Off Street Parking
- \* Storm Windows
- \* Separate Electric Meters
- \* Most Appliances Included

TERMS: 10% down day of auction, balance at final settlement on March 15, 1990.

OPEN HOUSE: Saturday, January 13, 12:00 Noon to 3:00 p.m. For more information on income, assistance to obtain financing, or private showing, call Paul E. Martin, Auct., 717-733-3511.

NOTE: INVESTORS - Be sure to see this fine investment property in Ephrata Borough, in excellent repair WITH VERY GOOD RETURN. 100% occupancy.

Auction By:

**ADAM BURKHOLDER**

A. Anthony Kilkuskie, Atty.  
Auction Conducted By:  
J&P Auctions  
Paul E. Martin, Auct.-  
AU-001601-L  
Ephrata, PA (717) 733-3511  
John D. Stauffer, Auct.-  
AU-001509-L  
Manhelm, PA (717) 665-5099

**PUBLIC AUCTION**

Having decided to discontinue farming, I will sell the following on my farm located on Glebe Road at Earleville, Md., between Bohemia River Bridge (Hacks Point) and Cecilton, Md. (Signs posted) Rt. 213.

SALE DATE:

**MONDAY, JANUARY 22nd, 1990**

At 11:00 A.M.

FARM MACHINERY: JOHN DEERE 7700 COMBINE, 843 corn head, 15' grain table, JD 4440 TRACTOR w/duals (524 hrs.), JD 4240 TRACTOR (1200 hrs.); JD 4230 TRACTOR, JD 2640 TRACTOR, JD 7000 PLANTER (6 row), JD 5 bottom plow, JD #35 2 row forage harvester (narrow), JD 215 double disc, JD scraper blade, JD 346 baler, JD side delivery rake, JD rear cultivators, JD culti-mulcher, JD 709 rotary mower, JD 714A forage wagon, 2 JD #216 forage wagons, JD #54 spreader, 4 grain wagons, 4 flat wagons, INT. #5100 grain drill, GEHL Mix-all Grinder, GEHL forage wagon, Little Giant 42' elevator PTO, New Holland 479 Haybine, NH #851 round baler, hay tedder, AC #1200 field cultivator, Brillion 6 row cultivator, Brillion 10' chisel plow, Brill. mulcher, Brill. 16' transport cultipacker, New Idea spreader, John Blue sprayer (trailer) Int. cub tractor, metal gates, 100 posts, etc.

AT 12:30 pm. 1987 MALLARD RV (GM motor approx. 5500 miles) 37 1/2' long, sleeps 6, jacuzzi & bar, 2 a/c's, dual wheels & stabilizer wheels, (approx. cost \$100,000.00). LUNCH & REST ROOM available.

**WILLIAM B. CULLEN,**  
Owner

Glebe Road, Earleville, Md.  
HARRY RUDNICK & SONS, INC.  
Sales Manager, Auctioneers,  
Real Estate Broker  
Galena, MD 21635  
Phone: 301-648-5601