

LEADERSHIP AT WORK



We Ship UPS Daily



DATE: Monday- January 29
TIME: 9 AM-3 PM
PLACE: Farm & Home Center
 Arcadia Road

**Lunch Will Be Served
 Door Prizes**

**Once A Year, You Owe
 It To Yourself**

Take a day off and take the whole family to town for John Deere Day. There'll be plenty of good friends and good food, and plenty to see and do. It's our way of saying "thanks for your business," so plan on joining us. After all ... you've earned it!

**Before You Buy, Give
 Our Salesmen A Call.**

717-291-1046

Or In Pennsylvania, Call Toll-Free

1-800-524-3276

(1-800-LBI-FARM)

Mon. Thru Fri. 7 AM To 5 PM

Sat. 7 AM Till Noon



**TILLAGE
 EQUIPMENT**

**Harley
 LANDSCAPE
 POWER RAKES**



**Preseason Savings
 10% Cash & Carry Discount
 Applies To These**



"Specials Of The Week"

<p>NEW HOLLAND 489</p> <p>Haybine - 9 Ft.</p> <p>\$4,150</p> <p>Less 10% No Trade</p>	<p>NEW HOLLAND 1880</p> <p>S-P Forage Harvester w/Cab, 3R30</p> <p>\$8,250</p> <p>Less 10% No Trade</p>	<p>NEW HOLLAND TD50</p> <p>Disk Harrow 32 - Blades, 14-Ft. w/Scrapers, Lift Cyl.</p> <p>\$4,150</p> <p>Less 10% No Trade</p>	<p>NEW HOLLAND 791</p> <p>Manure Spreader 360-Bu. Single Beater, Hyd. Endgate</p> <p>\$3,950</p> <p>Less 10% No Trade</p>
---	--	--	--

**JOHN DEERE ENGINE
 OIL FILTERS**

OIL FILTERS
 FOR UTILITY
 TRACTORS
\$2.85



PART NO. T19044
 Maximum protection for your John Deere utility tractor. Don't risk engine damage — change filters at recommended intervals

ENGINE OIL
 FILTERS

For most 40
 series John
 Deere
 Row-Crop
 Tractors.



\$6.30
 #AR43834

ENGINE OIL FILTERS

For
 50, 55 Series
 Row Crop Tractors



AR101278

\$8.60

**JOHN DEERE ENGINE AND
 HYDRAULIC OILS BY THE DRUM**



(55 Gal.)

**SALE
 PRICE**

30W **\$185.50**
 30W Plus 50 **\$196.95**
 15W 40 **\$196.95**
 15W 40 Plus 50-50 **\$208.75**
 Hy-Guard **\$190.50**

**JOHN DEERE
 GREASE GUNS**



ONLY
\$12.50
 #TY15381

ONLY
\$8.50
 #TY15410



**Sprayway
 Glass Cleaner**
 Leaves no film.
 Perfect for tractor
 cabs. 19-Oz.



\$1.95

ONLY per
 tube
\$1.10
 John Deere
 All-Season
 Lubrication Grease.
 Works in Hot
 Or Cold



**50 Disposable
 Shop Towels**
 Reg. \$4.99



NOW \$3.95 #TY15444

JOHN DEERE DAY PARTS SPECIALS

Prices In Effect Now Thru

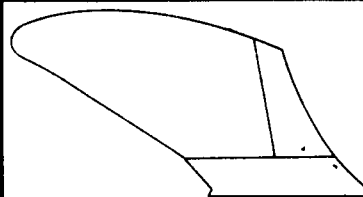
FEB. 3

**Special Parts Dept. Gift
 (1) Landis Bros., Inc. Winross Truck
 Register All Week In Parts Dept.
 ALL OTHER PARTS 10% OFF,**

Size

3x22 Twisted LH & RH	\$ 6.60
3x24 Twisted Concave LH & RH	\$11.20
4x22 Twisted LH & RH	\$11.75
4x24 Twisted Concave LH & RH	\$13.90
1 1/2 x11 Hi-Sp. Field Cultivator	\$ 2.10
7" Field Cultivator Sweep	\$ 2.60

Guaranteed Against Breakage



**REDUCED
 PRICES ON
 ALL PLOW
 PARTS**

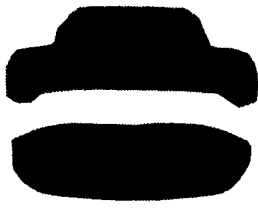
A51501 16" Share	4 Bolt	Reg. \$10.92	You Pay \$ 9.30
A42808 18" Share	3 Bolt	Reg. \$14.79	You Pay \$12.58
A14702 16" Shin	R.H.-H.S.	Reg. \$12.60	You Pay \$10.70
A51081 Shin	Metric	Reg. \$13.48	You Pay \$11.45
A20702 16" Moldboard	H.S.	Reg. \$80.30	You Pay \$68.25

JOHN DEERE SEAT KITS

ONLY \$75.95

UTILITY TRACTOR AND EQUIPMENT
 SEAT CUSHION KIT

Fits the following equipment:
 Tractors: 1020, 2020, 2030, 2440, 2630, 2640
 Windrowers: 800, 830.



YOUR CHOICE ONLY

\$85.95

Reg. \$109.95

**YELLOW SEAT
 CUSHION KIT**

Fits the following equipment:
 Tractors: 2510, 2520, 3010, 3020,
 4010, 4020, 5010, 5020, 4030, 4230



NEW
 Fabric Seat
 Cushion Kit

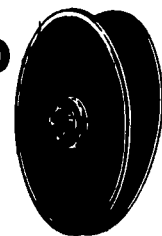


Fits the following equipment:
 Tractors (RC/4WD): 30, 40, 50 Series

**TRU-VEE™ PLANTER
 OPENERS**

\$18.50

Ea.



PART NO.
 AA20242

TRU-VEE double-disk openers
 provide smooth-sided "V" trench
 for excellent soil-to-seed contact
 and positive depth control.

**SEED DISK
 SCRAPERS**

AA26443 RH
 AA26444 LH
 Your
 Choice
 Only

\$3.25



DISK BLADES & COULTERS



A24997 16" No-Till Rippled Coulters	\$15.90
A46665 16" No-Till Rippled Coulters	\$18.77
PM26-5000 18" Imported 1 1/2" & 1 1/2"	\$ 8.57
B31315 18" 9 Ga. 1 1/2" & 1 1/2"	\$11.48
B31318 20" 7 Ga. 1 1/2" & 1 1/2"	\$16.85
B35605 22" 7 Ga. 1 1/2" & 1 1/2"	\$18.86



LANDIS BROS., INC.

1305 Manheim Pike, Lancaster, PA 17601

(Located S. Of Rts. 30 And 283 Or PA 72)

