

# Lancaster Farming

VOL. 35 No. 11

Four Sections

Lancaster Farming, Saturday, January 20, 1990

50¢ Per Copy

\$12.50 Per Year



## Denise Sustrik Crowned PA Fair Queen

Washington County did it again! For the second year in a row, Washington County's fair queen representative won the state queen title when she competed with other county queens from across the state. Denise Sustrik (center) was crowned by Kelly Thompson (right), last year's queen. First runner Lorrie Sue Robinson (left) represented Big Knob Grange Fair.

The Pennsylvania State Association of County Fairs held the 78th annual convention in conjunction with the Pennsylvania State Showmen's Association. More details on the three-day convention, held in Lancaster, will appear in next week's issue of *Lancaster Farming*. Photo by Lou Ann Good.

## Questions About BST Raised At Expo

**EDITOR'S NOTE:** This is the first in a two-part series of a report on Bovine Somatotropin (BST) as discussed by several experts at a recent Penn-Jersey Dairy Exposition. Out of the many issues facing the dairy industry as it enters the 1990s, perhaps no other is more significant than the proposed use of biotechnology to increase milk yields. In presenting this series, we are attempting to keep readers as up to date as possible on developments with this issue, as with others.

VERNON ACHENBACH, JR.  
Lancaster Farming Staff

ALLENTOWN (Lehigh Co.) — More questions, legal and ethical, were raised this week over the proposed use of the milk-increasing drug, Bovine Somatotropin (BST).

During the third annual Penn-Jersey Dairy Exposition, about 200 dairy farmers, from Pennsylvania and New Jersey, devoted almost an entire day with four guest speakers to discuss the vari-

(Turn to Page A27)

## Former President Carter To Speak At State Holstein Banquet

STATE COLLEGE (Centre Co.) — It's been nearly 10 years since former President Jimmy Carter and First Lady Rosalyn made their first trip to Wayne Harpster's Huntingdon County dairy farm. Their reason for coming was to do some leisurely trout fishing in Spruce Creek, a well stocked stream which runs through the center of the Harpster family's 2,500 acres.

Wayne vividly recalls that day in 1979 when the Presidential helicopter landed on one of his

cornfields near the creek, "The first thing President Carter talked about was the type of weeds growing in my fields. This really impressed me! I also remember Jim Harpster's mentioning that the dairy business had been doing rather well lately and I quickly replied, 'Yeah, I hope it stays this way!'"

President Carter and Wayne Harpster's meeting that first day was purely accidental. Wayne had no idea the President was coming to fish in Spruce Creek. In order to

(Turn to Page A26)

## Dairy Industry Playing 'Catchup'

ANDY ANDREWS  
Lancaster Farming Staff  
QUARRYVILLE (Lancaster Co.) — "The dairy industry is playing 'catchup' with the rest of the economy, so the increased prices of milk are necessary, considering how behind the times dairy farmers have been," said James S. Fraher, economist with the Atlantic Dairy Cooperative (ADC) at a meeting of locals in Quarryville Thursday.

The business meeting was attended by more than 140 dairy farmers in the Quarryville, Strasburg, and Paradise areas who

belong to ADC. District Q holds a membership of 183 from the two locals.

Officers for 1990 and delegates to represent district Q of the ADC were elected. They are Dale Hershey, president, Strasburg-Paradise local and Kenneth Beiler, vice president. Charles Neff is secretary-treasurer for Strasburg-Paradise. Dave DeLong is president, Quarryville local, and P. Robert Wenger is vice president. Secretary-treasurer for Quarryville local is Donald Herr.

(Turn to Page A24)

## Andrews Joins Lancaster Farming



Andy Andrews

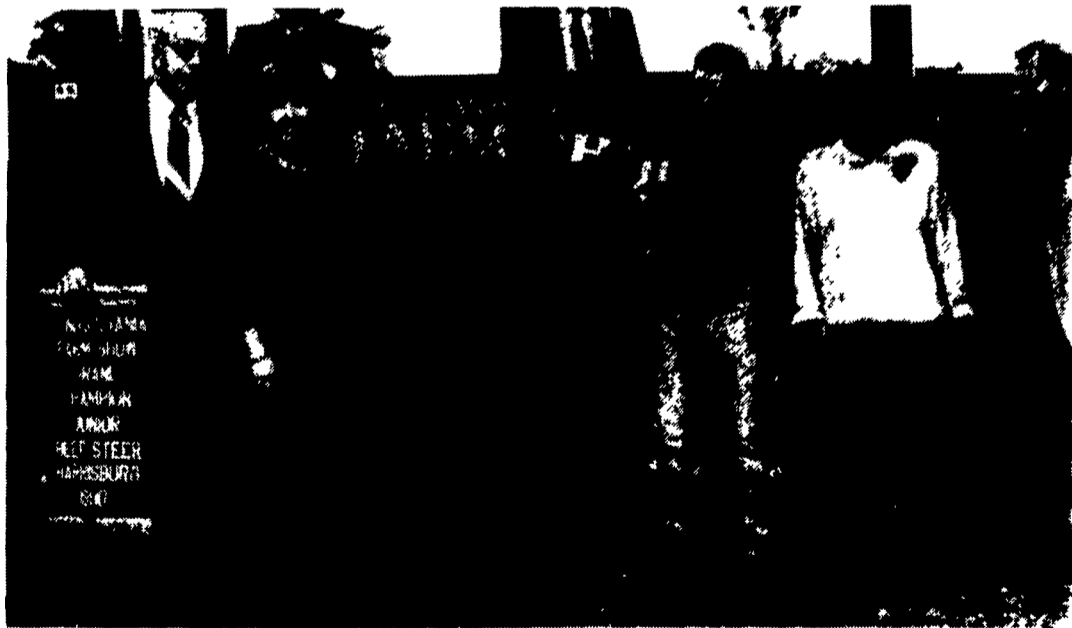
EPHRATA (Lancaster Co.) — Andy Andrews has joined the staff of *Lancaster Farming*.

Born in Lancaster County, Andy worked as a summer job hand for a steer farm north of New Holland.

"I grew to appreciate the long, hard hours put into a farm of that sort," Andy said. "I was happy to help in the bailing and silage operations. I also 'pitched in,' as it were, helping to clean the stables and spread manure.

"The man who operated the farm also worked full-time for a local industry. So he got up early and put in an awfully long week." Andy said that the farm experience

(Turn to Page A38)



Mike Messick smiles and holds his third and last Farm Show grand champion market steer steady. Messick has reason to smile, as Mr. and Mrs. Bill Campbell (right), of Hoss's Steak and Sea House, paid \$11,100 for the top animal. State Agriculture Secretary Boyd Wolf and Mrs. Robert Casey stand in front of the animal in support of the sale. See story Page A-30

## Consumers Think Hamburgers Are Not Meat

EVERETT NEWSWANGER  
Managing Editor  
HARRISBURG, (Dauphin Co.) — "People don't really associate their food with the farm," said Ms. Amy Barr, executive director, The Good Housekeeping Institute. "I'm always amazed when people say they don't eat meat, but they eat hamburgers. The consumer often has no comprehension that her food comes from the

farm. She only knows we are supposedly abusing animals.

"And the environmental movement is here to stay," Barr declared. "You better not package your product in something that will harm my children's future. We've all heard of acid rain and the ozone layer. Now a recent story in the *Wall Street Journal* told how cattle manure creates methane that is robbing our earth of oxygen.

People are terrified by what they think is happening on our farms."

Speaking at the Pennsylvania Beef Council's annual meeting last Wednesday evening, Barr said the present homemaker uses her purchase activity to make herself heard politically. "America is expressing her value system one purchase at a time. She is not going to buy your product if it doesn't do

(Turn to Page A36)