

1 FARM EQUIPMENT

DEERFIELD Ag & Turf Center, Inc.

Watsonstown Exit Of I-180
Watsonstown, PA
717-538-3557
1-800-553-3370



Used Tractors

JD 2350, 55 h.p., w/245 loader
JD 2950, 4x4, 750 hrs.
JD 3020 diesel, WF, good
Farmall 706, NF good
Oliver 1855, good condition, \$7,500
Case 2470, 4WD
MF 65, WF, gas
Ford 981, WF, gas

Misc.

JD 8350 drill, 18x7, fert.
Vermeer 10 1/2' no-till drill
Krause 5200 no till drill, 21x7
JD 1209 mower conditioner, 9'
IH 1190 mower conditioner, good
NH 469 mower conditioner
NH 488 mower conditioner, good condition
(2) NH 495 12' mower conditioner
JD 24T baler
NH 276 baler w/thrower
Case 8 btm. plow
JD 8450 roll-over plows
JD 230 wing fold disc, 23'
JD 35 forage harvester w/cornhead
(2) 16' bale wagons w/10 ton running gear
16' Badger forage wagon, tandem, very good
(2) IH 130 forage wagons, good, tandem
Dion forage wagon
JD 7000 4 row cons. planter
JD 7240, 6 row cons., dry, 2 yrs. old
(2) JD 1300 planters, 4 & 6 row, as is
MF 640 4 row planter, air, dry, good
Speed King grinder mixer
JD 2450 8 btm. plow, good cond.
NH 346 tank spreader
JD 40 spreader, 175 bu.
IH 205 combine w/heads
JD 3300 combine, AC w/platform
JD 6600 Side Hill w/platform
(3) JD 6620 Side Hill combine, excellent

In Stock

New Row Crop Tractors, 4555 MFWD, 4055
New 9500 Maximizer Combines



Low Rate Or Interest Free Financing
On All New & Used Combines



Round Bale Feeder with Panel \$110 each or 3/\$300



3 Pt. Bale Carrier \$175

Kutz Farm Equip. Inc. Pine Grove, PA (717) 345-4882

USED EQUIPMENT

1466 D, cab
1086 D, cab
674D
560 Gas
544D Hydro
IH 606 D, 3 pt.
JD 3010 Gas
(2) IH 154 LoBoy w/mowers
BN Tractor
F300 Gas
(2) Farmall Cub w/Belly Mower and Equip.
Allis B w/Woods Belly Mower
Farmall M
Farmall Super H
PTO Hydraulic Roll Mill
NI 323 Corn Picker
6x32' Hydraulic Auger
8 Ton Easy Flow Bin Wagon
IH 540 Plow
IH 350 Disc
IH 10' Disc
JD 8200 14 Opener Drills
JD 4R 3 Pt. Cultivator
IH 540 Spreader, hyd. endgate
8x10 Tie No-til Drill
574 D Cab
IH 574 Dsl. w/cab
NEW EQUIPMENT
Amco Disk 10 1/2'
Landall 7 Tooth Chisel Woods Mowers
2 pt. & 3 pt. Conversion Kits
8 ton & 10 ton Demco Wagons
Danuser 12' Posthole Digger
Grimm Hay Tedders
3 Pt. Sprayer Blades
Cam Sprayers
Honda Engines
Glenco Soil Saver 7T w/buster bar

SMITH FARM EQUIPMENT

Newport, Pa. Perry County
717-567-3562 or 717-567-6566

GOOD USED FARM EQUIPMENT

NH 489 Haybine, 3 yrs. old, nice \$4,250
NH 489 Haybine w/hydraulic hitch, NEW \$7,850
NH 630 Round Baler, Baled 50 Bales \$7,850
NH 478 Haybine, 7' Cut..... \$3,250
CAN DELIVER...WILL TRADE
717-933-8134

FOR SALE IRRIGATION PUMP AND MOTOR

Ford 6 Cyl. with Marlow 5x5 pump, good condition, \$1,500
Pallet Bins, 15 bushel size, \$10 each, \$400/50.
Zimmerman Deluxe Mulch Layer, used 5 acres, \$650
1 Roll Agryl floating row cover, 42'x 800', never used, \$400
Lehigh County
215-262-3674

Norm Shores & Son Tractor

Towanda, PA

717-265-9014

Delivery Available USED TRACTORS

Ford TW15, 4WD, Cab, air, weights, fully equipped, 1350 hrs., excellent
Ford 7710 4 WD, Cab, air, weights, fully equipped, 1230 hrs., excellent
Ford 9700 w/ROPS, dual power and weights, very nice
Ford 8700 Cab, air, dual power, weights, excellent
Ford 7710, 2 WD, cab, air, fully equipped, 1100 hrs., with Ford 777 QT loader, excellent
Ford 7000 Dsl., all purpose model good condition
Ford 7000 Dsl. all purpose, dual power, dual remotes, very nice
Ford TW30 cab and air, 20.8x38 tires w/duals, front and rear weights, 3 remotes, excellent condition
Ford TW30, cab, air, 4WD, 20.8x38 tires, dual power, very nice
Ford TW20 cab, w/heat, 20.8x38 tires, radials, front and rear weights, very nice
Ford 8210 cab, air, 2WD, fully equipped, 500 hrs., like new, (95 hp)
Ford 8210, cab, air, 4WD, fully equipped, 516 hrs., like new (95 hp)
Ford 7000D flat deck model, dual remotes, weights, extra nice
Ford 6610 4WD, 2 pumps, 2 remotes, very good condition
Ford 6600 flat deck, dual power, 38" tires, very nice

Ford 6600 factory cab, dual power, dual remotes, clean and original
Ford 5610, 4WD, 2 remotes, 2 pumps, syncro-mesh, very nice
Ford 5000 1970 Diesel, 8 spd., good condition
Ford 4610, 4 WD, 2 remotes, 2 pumps, 1690 hrs., w/Ford QT loader, excellent
Ford 5000 Gas, 8 spd., good cond.
Ford 4000 Gas 8 spd. PS, good cond.
Ford 601 Gas 4 spd. Power steering, original
Ford 801 dsl., 5 spd., power steering, live PTO, weights, excellent
JD 4020D w/QT remotes w/QT loader, very nice
JD 4440, 1980 20x38 tires, weights, 3300 hours, QR, very nice
JD 4010 dsl, WF, front and rear weights, rebuilt motor, excellent cond.
JD 3020 side console, 2 remotes, front and rear weights, roll bar and canopy, rebuilt motor, excellent
JD 3010 Gas, WF, good cond.
Oliver 88 gas, clean and original
Oliver 770 gas, WF, one of the last, one of a kind
IH 1086, cab, air, 20x38 radials, 1981 model, very nice
IH 1066 cab, air, 20.8x38 tires, 2 remotes, excellent
IH 884D 4WD, 2 valves, 2 PTOs, TA, front weights, 1600 hrs., excellent

USED TILLAGE

JD 1240 4R plateless planter, dry fert., good cond.
White 5400, 6R planter, dry fert., monitor, no-til, disc openers, excellent
White 543 4R Planter, double disk openers, insecticide boxes, excellent
MF 9 tooth 3 pt. chisel w/gauge wheels, nice
Case 7 Tooth, 3 pt. Chisel adjustable gauge wheels, new paint and shovels
Ford 151, 4x18 Auto Reset Plow, w/coulters, (White 508)
Oliver 3x16 Cushion trip, semi-mount plow, excellent
IH 370 11' Disk, excellent
JD 220 20' centerfold disc, black gang, 20" blades, excellent
Glenco 12' field cultivator, 3 pt., w/gauge wheels
White 12' Heavy Duty frame disc w/24" blades, excel.
Oliver 4x16 cushion trip semi-mount plow, good cond.
IH 710 4x16 auto reset plow, coulters, gauge wheels, sidehill hitch, very nice
JD FBB 16x7 Grain Drill, very nice
White 588 5x20 auto reset plow w/coulters and gauge wheels, very nice
White Oliver 548 5x16 auto reset plow w/coulters, excellent
Case 308 4x18 auto reset plow, coulters, gauge wheel, very nice (White 508)
Oliver 252 12' finishing disc, very nice

USED FORAGE EQUIPMENT

NH 892 w/3 RN auger base pickup, elect. controls, metal alert, very good cond.
Fox Maxl one, self-propelled harvester, diesel, hydro, 4 WD, 3 RN, low profile, works excellent
JD 3960, 2 RN, 7' pickup, elect. controls, nice
Gehl CB600 electric sharpener, 2RN corn, hay pickup excel.
Gehl CB1000, 2R adjustable corn, wide pickup, elect. controls, very good condition
Gehl CB400 w/1R and pickup good condition
NH 892 w/824 2RN and 880W pickup, electric controls, reconditioned, excellent

USED HAY EQUIPMENT

NH 256 Rake w/rubber teeth
NH 256 Rake with dolly wheel
NH 258 Rake w/rubber teeth
NH 310 w/#70 Thrower, very nice
NH 848 Round Baler, 2 yr. old, excellent
NH 489 Haybine, very nice
NH 495 12' haybine, good condition
NH 479 Haybine
NH 499 12' hydro swing, excellent
JD 1209 Haybine late model
JD 640 rake w/dolly wheel
Vicon OM 321 Discbine, Excellent
NH 847 round baler, excellent

USED HARVESTER HEADS

NH 880W Hay Head
NH 890 2 RW Corn
Gehl 2R Snapper head
JD 3RN corn head
JD 2RN w/clutch
JD 2RN without clutch
NH 770W hay head
NH 717 2RN corn, excellent

MISCELLANEOUS

Ford 776 B loader fits 7700 or 7710
Oliver self-propelled combine with hume reel, excellent

CONSTRUCTION EQUIPMENT

JD 555 A Loader, crawler loader w/ripper, ROPS, Excel.
Oliver OC6 crawler dozer w/PTO, very nice

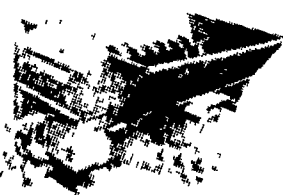
PICKERS

NI 323, 1R
JD 300 w/2RW or 2RN, very nice
NI 325 2RN, 12 rolls, very nice

Are You Putting Your Dollars Where The Steel Is?

LUCKNOW TMR MIXER

Heavy Duty Primary Drive System w/ Heavy Duty 100 & 140 Standard Sized Chains, Designed For Easy Maintenance.



Standard Discharge Carries Approximately 18" Past Wheel Hydraulic Driven w/Double Unloading Auger.

The Most Durable And Heaviest Built Mixer Available Today
REBUILDING TMR MIXER WAGONS

For Pricing, Parts and Service

Call **YOUR FARM NEEDS, INC.**

Robert M. Vanderbosch - Robert J. Barber
Otto, N.Y. • 716-257-9775

HANDLING EATON ELECTRONIC SCALES
PLATFORM SCALES

USED MIXERS ALSO AVAILABLE