

**Virginia Weekly**  
Jan. 11, 1990

MARKETS IN REVIEW; JAN. 4-10, 1990. FEEDER STEERS AND HEIFERS IN VIRGINIA WERE UNEVEN, \$3.00 HIGHER TO \$8.00 LOWER WHILE MIDWEST PRICES WERE \$1.50-2.50 HIGHER.

SLAUGHTER STEERS AND HEIFERS IN VIRGINIA WERE NOT REPORTED THIS WEEK AS MIDWEST PRICES WERE 50 CENT TO \$1.00 LOWER.

COWS AND BULLS IN VIRGINIA WERE MOSTLY \$3.00-5.00 LOWER AS MIDWEST PRICES WERE STEADY TO \$1.00 LOWER. BEEF PRODUCTION WAS 2% BELOW A WEEK AGO BUT 2% ABOVE A YEAR AGO. AVERAGE DRESSED WEIGHTS WERE 8 POUNDS HEAVIER THAN LAST YEAR.

VEAL AND CALF PRICES IN VIRGINIA WERE VERY UNEVEN AS MIDWEST PRICES WERE STEADY TO \$2.00 HIGHER. VEAL AND CALF PRODUCTION WAS 7% ABOVE A WEEK AGO AND 14% BELOW A YEAR AGO. AVERAGE DRESSED WEIGHTS WERE 4 POUND LIGHTER THAN LAST YEAR.

LAMB PRICES IN VIRGINIA WERE STEADY TO \$6.00 LOWER AS MIDWEST PRICES WERE STEADY TO

\$2.00 LOWER. LAMB PRODUCTION WAS 1% ABOVE A WEEK AGO AND 18% ABOVE A YEAR AGO. AVERAGE DRESSED WEIGHTS WERE 1 POUND HEAVIER THAN LAST YEAR.

SLAUGHTER HOG PRICES IN VIRGINIA WERE \$1.00-1.50 HIGHER AS MIDWEST PRICES WERE 50 CENT TO \$1.00 HIGHER. FRESH PORK PRICES WERE \$5.00 TO \$10.00 HIGHER EXCEPT LOINS WHICH WERE \$2.00-3.00 LOWER. HOG PRODUCTION WAS 10% BELOW A WEEK AGO AND 8% BELOW A YEAR AGO. AVERAGE DRESSED WEIGHTS WERE THE SAME AS LAST YEAR.

THE VIRGINIA DIRECT HOG MARKET JAN. 4-10, 1989. RECEIPTS FOR THE DIRECT HOG MARKET IN VIRGINIA ESTIMATED 17,930 HEAD COMPARED TO LAST WEEK --- HEAD. THE MARKET CLOSED \$1.00-1.50 HIGHER COMPARED TO LAST WEDNESDAY'S TRADING WITH BARROWS AND GILTS: COUNTRY POINTS PLANTS US 1-3 210-250 LBS 47.00-47.50 --- US 1-2 210-250 LBS HIGH YIELDING 48.50-49.50 US 2-4 210-250 LBS BASE PRICE 46.50-47.50 SOWS \$33.50-45.00 AND BOARS \$25.00-35.25

SLAUGHTER STEERS AND HEIFERS 0%; SLAUGHTER COWS 27% SLAUGHTER BULLS 2%; SLAUGH-

TER CALVES AND VEALERS 1%; FEEDER CATTLE UNDER 600 LBS 53% OVER 600 LBS 17%

PRICE RANGES FOR VIRGINIA WEEKLY AUCTIONS

SLAUGHTER CATTLE STEERS: NO PRICES REPORTED THIS WEEK HEIFERS; NO PRICES REPORTED THIS WEEK UTILITY & COMMERCIAL COWS 42.00-55.00 BULLS - 1-2 900-1300 LBS 51.00-64.00 1-2 1300-1600 LBS 52.00-65.50 1-2 1600 LBS & OVER 54.00-66.00 SLAUGHTER CALVES AND VEALERS VEALERS - HIGH CHOICE & PRIME 100-250 LBS 92.00 GOOD AND CHOICE 100-250 LBS --- CALVES - GOOD AND CHOICE 250-500 LBS 67.00-84.00 SLAUGHTER LAMBS HIGH CHOICE & PRIME 95-125 LBS 52.00-59.00 SLAUGHTER HOGS US 2-4 200-250 LBS 44.00-48.25 SOWS US 1-3 300-500 LBS 35.00-48.00 500 LBS & OVER 35.00-48.00

FEEDER CATTLE STEERS; MEDIUM 1 HEIFERS: MEDIUM 1 200-300 LBS 95.00-110.00 300-400 LBS 72.00-87.00 300-400 85.00-101.00 400-500 69.00-84.50 400-500 83.00-99.00 FEW 76.00 500-600 68.00-80.00 500-600 77.00-90.00 600-700 62.50-76.50 600-700 70.00-86.00 700-800 62.00-74.00 700-800 70.00-84.00 800-900 61.00-66.50 800-900 65.00-76.50.

**N. Virginia Area Livestock**

Staunton Union & Marshall (Fauquier), VA  
Jan. 9, 1990

SLAUGHTER HOGS 31 HEAD - BARROWS AND GILTS 75 CENT HIGHER. BARROWS AND GILTS US 2-4 200-250 LBS 48.25 BOARS 30.00 SLAUGHTER CATTLE 177 HEAD - SLAUGHTER COWS AND SLAUGHTER BULLS 1.50 HIGHER.

SLAUGHTER COWS 157 HEAD CUTTER & BNG.UT. 1-3 44.00-52.00 BRKG.UT. & COMM. 2-4 43.00-55.00 CANNER & LOW CUTTER 1-2 41.00-47.75

SLAUGHTER BULLS 5 HEAD; 1-2 1300-1600 LBS 58.00 1-2 1600 LBS & OVER 56.00-61.00

SLAUGHTER CALVES AND VEALERS 15 HEAD CALVES - GOOD AND CHOICE 250-500 LBS 67.00-73.00 LAMBS 50 HEAD - SLAUGHTER LAMBS STEADY. HIGH CHOICE AND

PRIME 95-125 LBS 58.50 CHOICE 85-125 LBS 60.00 FEEDER LAMBS CHOICE AND FANCY 70-85 LBS 62.50; 60-70 LBS 61.00 SLAUGHTER EWES ALL GRADES 19.00-25.00 SLAUGHTER RAMS ALL GRADES 23.00

FEEDER CATTLE 160 HEAD - TOO FEW IN ANY GROUP TO QUOTE A MARKET

BABY CALVES RETURNED TO FARMS 29 HEAD NEWBORN TO 4 WK OLD 25.00-115.00 PER HEAD. OVER 100 LBS 77.50-117.00 PER CWT.

STATE GRADED FEEDER CATTLE 282 HEAD SOLD AT MARSHALL, VIRGINIA ON JAN. 9, 1990

STEERS; MED.&LARGE 1 SMALL 1 MED.&LARGE 2 400-500 81.00-92.50 82.75 75.00-85.50 500-600 79.00-86.00 75.00 75.00 600-700 79.00-82.25 74.00 77.00 700-800 78.00-79.50 73.00 --- 800-900 77.00 ---

HEIFERS; MED.&LARGE 1 MED.&LARGE 2 400-500 73.00-78.00 --- 500-600 75.00-79.50 65.00-75.00 600-700 73.75-77.00 --- 700-800 70.00 ---



Slaughtered Under Federal Inspection Top Prices For All Breeds Of Cull Cows, Bulls & Steers

All Paid On Dressed Weight

**MULVANEY LIVESTOCK TRUCKING**

Easton, PA (215) 258-1670

HANDLING: Warren, Hunterdon, Counties, New Jersey IN PENNA. Northampton, Bucks, Lehigh, & Parts of Berks, Carbon, Monroe & Schuylkill Counties

**MARKET YOUR FORMULA FED**

**CALVES**

WITH AREA PACKER Our valued growers weigh their own calves.

**Venuto Meats, Inc.**  
820 W. Girard Ave.  
Philadelphia, PA 19123  
215-923-VEAL

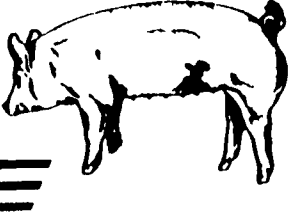
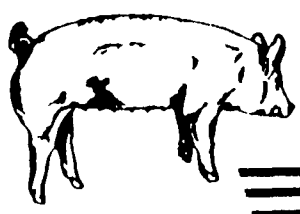
**HAY, STRAW & GRAIN SALE**

Every Thursday at 1 p.m.

**Vintage Sales Stables, Inc.**

(Rt. 30, 10 miles east of Lancaster in Paradise, PA)

For info. L. Robert Frame, Sr. president  
717-442-4181 business  
215-458-8518 home Glenn S. Frame, Mgr.

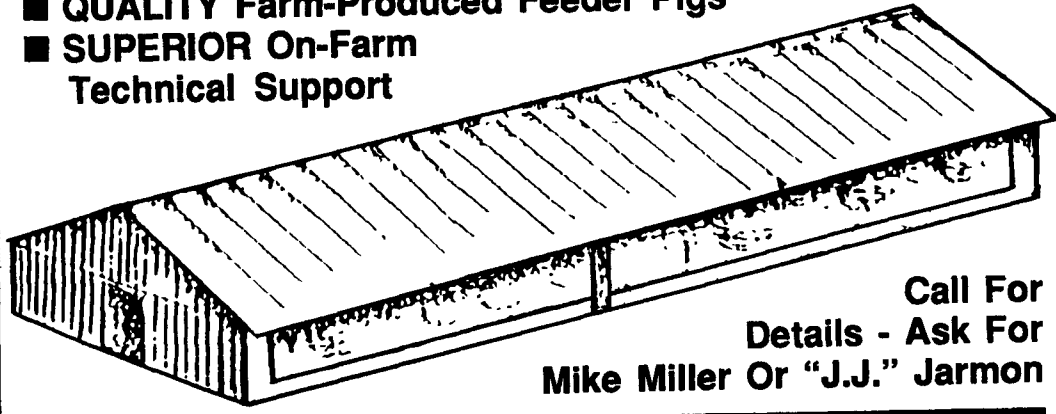


**HOG CONTRACTS AVAILABLE!**

An Opportunity For People Who Are Capable Of Managing A New 1,000-2,000 Head Finishing Facility

**BENEFITS INCLUDE:**

- POSITIVE Cash Flow & Depreciation Write-Offs
- MINIMAL Labor & Flexible Hours
- QUALITY Farm-Produced Feeder Pigs
- SUPERIOR On-Farm Technical Support



Call For Details - Ask For Mike Miller Or "J.J." Jarmon

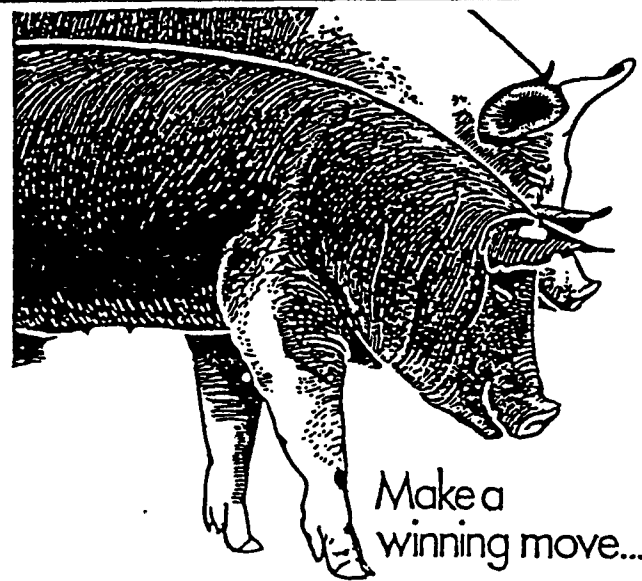
PA Toll Free

Local

1-800-468-5524

(717) 367-1525

419 West High St., Elizabethtown, PA 17022



Make a winning move...

\*\*\* Contract with Purina Mills, Inc. Now accepting new and existing sow herds

We Supply

- Quality Purina Feeds
- Sound Genetic Program
- A Service Representative To Assist You
- Competitive Contract Payment

Call Us Today

1-800-873-5300

**Purina Mills, Inc.**  
Serving The Needs Of Agriculture