

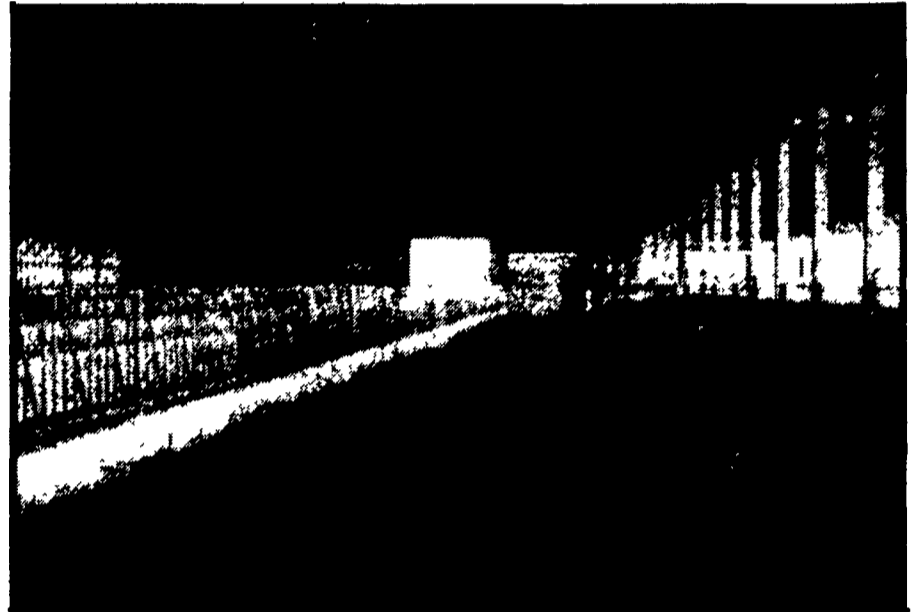
Thanks And Congratulations

To *Beriah Lewis Farm*

North Stonington, Conn.





On Their New 264 Cow 108'x202' Slatted Free Stall Barn With 16'x110' Circular Concrete Manure Storage



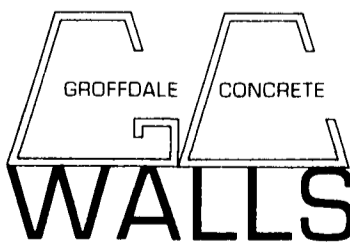
This Is A Maintenance Free Barn Requiring Very Little Equipment Repair.

- Rigidply Engineered Trusses
- Aluminum Roof with Insulation
- Ridge Ventilation
- Curtain Sides
- Center Drive Thru Feed Alley
- 4' Deep Gravity Flow Manure Pits

-  Waffle Cattle Slats
-  Concrete Beams
- Groffdale 16'x110' Circular Concrete Pit With Chain Link Fence
- Zimmerman Head Lock And Free Stalls
- Ritchie Waterers
- Vanco Cow Mats

Many Thanks To The David Lewis Family For Selecting These Businesses From Lancaster County To Design And Build Your Barn. We Wish You Continued Growth And Success For The 90's.

MANURE STORAGE BUILT TO YOUR NEEDS



148 BRICK CHURCH RD.,
LEOLA, PA 17540
(717) 656-2016

- Designed By -
**SYRI-CON PRECAST
CONCRETE CORP.**

*Hog - Cattle Slats/Concrete
Penning/H-J Bunks*

477 E. Farmersville Rd.
New Holland, PA 17557

717-355-2361



**LAPP'S BARN
EQUIPMENT**

5935 Old Philadelphia Pike,
Gap, PA 17527

Phone: 717-442-8134

FAX 717-442-3112
SALES & SERVICE

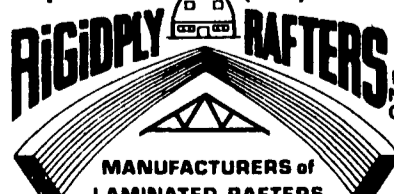
A & J Builders

Residential - Agricultural - Commercial

4040 Ridge Rd.
Gordonville, PA 17529

717/354-4735

Telephone: (717)866-6581



MANUFACTURERS of
LAMINATED RAFTERS
and WOOD ROOF TRUSSES

701 E. Linden St., RICHLAND, PA 17087

**717-665-4056
ZEISET EQUIPMENT**

2187 N. Penryn Rd.
Manheim, PA 17545

*Specializing In
Curtain Systems*