

Vertical Milling Machine, 9x36 table, \$850. Dewalt 16" radial saw, \$800.; 15' Gantry 2,000lb. capacity, \$900; B&S #13 Universal Grinder, \$900 201/453-2088

WANTED: old barns, log cabins, out buildings, etc for removal Call 301-357-8108.

PAINTED STEEL ROOFING & SIDING

- Galvanized/Galvalume
- 29/26 Gauge
- 3 Major Brands Available
- Large Stock Trim & Sheet

AS LOW AS \$29⁰⁰ per/sq.

Conestoga Building Supply
New Holland, PA 17557
717-354-2613 or 1-800-544-9464

ANTIQUES WANTED

Wall cupboards, pay up to \$10,000. Corner cupboards to \$5,000. Slant-front desks, grandfathers clocks, rope beds, guns, pottery, toys & anything old. Just give me a call. Free appraisals.

Write:
Tom E. Fisher
P.O. Box 277
Elverson, PA 19520
Or Call
1-215-286-6618
Anytime

35 TRUCKS & TRAILERS

1971 Int 1700 Truck, twin cylinder 16' dump body, 48" sides, hay/grain tailgate, \$3,000 or good offer. No Sunday calls 717-637-0206 or 717-637-4887.

1971R Mack, 237 engine, 5 speed tandem tractor, \$5,200. 1975 IHC 4300, 290 Cummins, 10 speed, wetline, \$7,500 (703)972-1738

1972 Ford F-500 w/12' steel dump flatbed w/ sideboards Very good condition. \$3500. Call 301/836-1852

1972 INT. 1310 w/ Schwartz rollback hyd. winch & Ag tow bar, \$4,500 Erb & Henry Equip. Co Inc. 215-367-2169

1973 Ford Louisville truck, dump bed w/operating winch, 20' bed, great for hauling, \$5,500 (717)354-2613

1947 Gal roller 3-5 ton, front steel drum, rubber rear wheels, new VP-40 Engine, asking \$2,000 Negotiable. 516-727-4194

1947 Model W Allis Chalmers motor grader, 8" blade, Hyd-molo board, front power broom, needs clutch Asking \$1,500 Negotiable 516-727-4194

1959 Seaman Pulvi-mixer, 4 70 Detroit, needs battery Asking \$3,300 negotiable 516-727-4194

1965 Oliver OC-96, 3/4 yd track loader, PTO for rear uni-mix needs undercarriage and batteries Asking price \$2,000 neg 516-727-4194

1966 Cabover International, fresh 318 engine, new rubber, \$5,500 OBO 717-235-4437 after 8PM

1968 Chevrolet model 60 dump truck, 18' body, 30,000 GVW, inspected, \$2,500 2 tree trucks w/ side chippers 12", crew cab and dump bodies, \$2,500 each. (215)885-1032.

34 AUTOS

1973 Lincoln Continental MK IV, one owner, good condition, \$1,950. OBO. Franklin Co. Call 717-349-2325

1980 Impala Diesel Station Wagon, 3 seats, Black \$1250. 717/263-8091

1983 Mustang convertible GLX, V8, 5 speed standard, black w/white top and interior, excellent condition, \$5,595. Call Jorama Ranch, (717)649-5133.

'83 Buick Regal, V-6, air, half vinyl roof, excellent condition. Inspection 'til 11-90. Asking \$2,995. 215-536-0912.

'88 Chevy Cavalier, 4 door wagon, auto., 4 cyl., excellent condition Inspection 'til 11-90 Asking \$4,795 215-536-0912

33 RECREATIONAL VEHICLES

1980 Ski-doo snow mobile, model number 7500, 340 c/c engine, great shape, low mileage, \$1,000 OBO (201)439-2566

35 TRUCKS & TRAILERS

1964 Chevy tank truck, clean, 1400 gallon capacity, 3 compartments, used for kerosene and fuel oil, 20,000 miles on 6 cylinder engine, \$1,200. Call Jorama Ranch, (717)649-5133.

1975 Dodge D600, 16' flat bed w/partial roof rack, 318, V8, 5+2 spd., 21,000 GVW, \$1,800. 215-756-6154

1976 International 1800 model, w/new 446 gas motor, 5+2, P/S, air brakes. 1980 International 1854, S model, 466 diesel, 5+2, P/S, 28,000 GVW. 1981 International 1854 S model, 466 diesel, 5 speed, P/S, 28,000 GVW (301)877-9889

1977 GMC 14' Grain Dump. 46K, 366-V8, 5x2, PS, Qwiktach Cabover Hay Rack. Excellent Condition. \$7000 OBO. Lanco. 717/529-2723

1977 GMC Astro 6V92T Det 10,000 mile on RB engine \$4,500 1978 KW new rubber and brakes. 1984 silver eng 8V92T, \$5,500 (717)524-7655

1981 Ford LT8000, new CATV8, new paint, 22' box, 3/4 ton left floor and gate, nice truck, best over \$6500 (215)347-9721

1985 Chevy pickup, 3/4 ton, 4WD, Scottsdale package, 350, auto, P/S, P/B, Am/Fm cassette \$8,500 Northern Baltimore Co (301)343-0491

1986 G'Dane Extendable Low Boy 48'-68', Excellent \$15,000 Insulated Potatoe Van with Propane Heater., Excellent \$5500 1981 Fruehauf 1980 White, c/o, new major 400, 13speed, Excellent Price \$7500 Phone 814/445-5840

1987 Ford F250 XL 4x4, 460 auto, air, 10" wide aluminum wheels, 37,000 miles Set up for Gooseneck Trailer Sharp! \$11,900 Best Offer 717/664-4587

1988 XLT Lariat F-150, 300 EFI, 4spd., P/S, P/B, Cruise, A/C, tilt, AM/FM, dual tanks, 6250 GVW, liner, rear sliding window and more Grey 1 owner 36,000 miles. Excellent condition \$8,700 717/456-7409

IF YOU NEED A SNOW PLOW or Snow Plow Parts

E.M. Kutz, Inc. Has It!

Call in by 12 noon — will be shipped same day UPS



& WESTERN PARTS

E.M. KUTZ, INC.
READING, PA
215-775-3528

Large Supply of Cutting Edges In Stock
Complete Line of Truck Equipment

35 TRUCKS & TRAILERS

FREEDOM
Ford

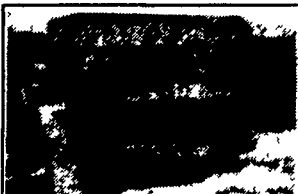
OF EPHRATA USED TRUCK CENTER

JANUARY CLEARANCE SALE

See Us Now For The Best Deals On The Finest Selection Of Pre-Owned Trucks In Central PA!!

\$1500 MINIMUM TRADE IN

100% FULL LIMITED WARRANTY ON ELIGIBLE TRUCKS



1987 CHEVY C-10 SCOTTSDALE

V8, automatic, stereo, wheel covers, step bumper, stereo, air condition, 1 owner, 19,000 miles, excellent condition.

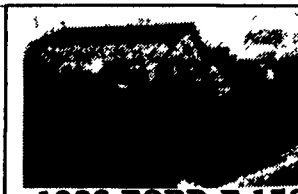
\$8,795



1986 FORD F-150 XL SUPERCAB

V8, automatic, stereo, cruise control, tu-tone, step bumper, cloth seat trim, one owner with 26,000 miles, the nicest 86 around.

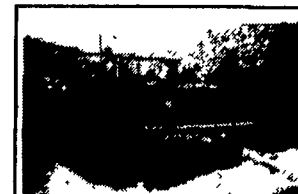
\$9,195



1988 FORD F-150 LARIAT SUPERCAB

V8, automatic, stereo, tilt wheel, cruise control, tu-tone, step bumper, cloth seats, one owner with 28,000 miles, like new, top of the line.

\$12,495



1988 FORD F-250 4x4

6 cylinder, 5 speed, stereo, gauges, carpeting, step bumper, accent stripes, sliding window, one owner with low miles, must see!

\$11,495



1985 CHEVY S-10 BLAZER 4x4

V6, automatic, stereo, console, tu-tone, privacy glass, WSW tires w/styled wheels, 48,000 miles

\$8,295



1986 FORD F-150 XL

V8, automatic, stereo, tilt wheel, cruise control, cap, tu-tone, cloth seat, one owner trade in, fine condition

\$8,495



1983 FORD F-250

V8, automatic, running boards, bed liner, stereo, built-in CB, one owner, excellent shape with new tires

\$6,195



1987 FORD AEROSTAR XL

7 passenger, capt. chairs, V6, auto, excellent condition, privacy glass, tu-tone, 32,000 miles

\$9,995

1973 FORD F-600 CHASSIS

Call For Details!

1986 DODGE D-150 ROYAL SE

V8, automatic, stereo, power windows/locks, cruise control, step bumper, tu-tone, wheel covers, loaded with equipment and like new

\$6,595

FREEDOM
Ford



of EPHRATA RT. 272 & STATE ST

EPHRATA - 733-2297 LANCASTER - 626-9166

