

Hog Sales Total \$163,000

HARRISBURG (Dauphin Co.)
 — Over \$63,000 was spent in the Small Arena of the Farm Show Building at the traditional two-day swine gilt sale. An average price of \$307 was paid for the 208 animals that crossed the auction block. The sale gives hog breeders an excellent opportunity to purchase champion animals to build and improve their herds. The champions had all been judged during Saturday's competition.

The grand champion Berkshire consigned by Dennis Grumbine of Myerstown, Lebanon County, was purchased by Harry Bachman of Annville, Lebanon County, and Tom Burke of Smithville, Missouri for \$400. The reserve champion Berkshire consigned by Dennis Grumbine was purchased by Art Groff of Manheim, Lancaster County for \$270. A total of 14 animals brought \$3,870, an average of \$276.50 per animal.

The grand champion Chester White was consigned by James Parlett of Airville, York County, and sold to Scott Lazarus of Germansville, Lehigh County, for \$600. The reserve champion Chester White consigned by James Parlett of Airville York County, was purchased by Charles Smith of Washington, Washington County for \$600. Twenty-four Chester Whites brought \$7,920, an average of \$330 per animal.

The grand champion Duroc was consigned by James Parlett and

Son of Airville, York County, and sold to Smith Hog Farm of Washington, Washington County, for \$1,000. The reserve champion Duroc consigned by Kenneth D. Fetterolf of Centre Hall, Centre County, was purchased by Smith Hog Farm of Washington, Washington County, for \$600. A total of 36 Durocs brought \$12,325, an average of \$342.50 per animal.

The grand champion Hampshire was consigned by Strawbridge and McCleary of Windsor, York County, and sold to Jack Clark of Hustontown, Fulton County for \$750. The reserve champion Hampshire was consigned by Kenneth Winebark family of Myerstown, Lebanon County, and was purchased by Tom Frantz of Seven Valleys, York County, for \$700. A total of 36 Hampshires brought \$10,755, and average of \$300 per animal.

The grand champion Landrace was consigned by John Mummert of Seven Valleys, York County, and was purchased by Rollingwood Farms, of Shanks, West Virginia for \$575. The reserve champion Landrace was consigned by Grant Lazarus of Germanville, Lehigh County, and was purchased by Rollingwood Farms of Shanks, West Virginia for \$485. Seventeen animals brought \$5,240, an average of \$308 per animal.

The grand champion Poland China was consigned by Cheryl

Bennecoff of Kutztown, Lehigh County, and was sold to Tim Wessner of New Tripoli, Lehigh County, for \$550. The reserve champion Poland China was consigned by Rocky Acres Farm of New Tripoli, Lehigh County, and was sold to Mapes Family Polands of Marysville, Ohio for \$450. Fourteen Poland Chinas brought \$3,555, averaging \$254 per animal.

The grand champion Spotted

HARRISBURG (Dauphin Co.)
 — For the second consecutive year, the Lebanon County Farm-City Week Committee placed first among statewide organizations in their year-round efforts to promote rural and urban understanding.

The Lebanon County Committee, chaired by James Grosh of Annville, narrowly edged out the Franklin County Farm-City Week Committee, chaired by Dalton Paul. Third place went to the Lancaster County Farmers Association for their yearlong efforts, recorded by Kendy Allen.

Activities conducted by the Lebanon County Committee during 1989 included a job exchange between farmers and city business people, a media breakfast, senior citizen and student farm tours, leadership discussion, farmers tour business and businesses tour

was consigned by James Parlett of Airville, York County, and was sold to George Dutrey of Dallsastown, York County, for \$350. The reserve champion Spotted was consigned by Russel Kegg of Bedford and was sold to Smiths Hog Farm of Washington, Washington County, for \$285. A total of 19 animals in the sale brought \$5,060, an average of \$266.50 per animal.

The grand champion Yorkshire

was consigned by Strawbridge and McCleary of Windsor, York County, and was sold to Calvin Lazarus of Whitehall, Lehigh County for \$850. The reserve champion Yorkshire consigned by Strawbridge and McCleary was sold to Clark Farms of Hustontown, Fulton County for \$550. A total of 48 animals in sale brought \$15,090, an average of \$315 per animal.

Lebanon County Places First For Rural, Urban Understanding

farms, food baskets for poor and elderly, and their annual Farm-City Week Banquet.

Lebanon County also sponsored a mall show featuring appearances by commodity representatives, agricultural organization displays, a trout and a chick hatchery, ice cream coupon distribution, kiddie tractor pull, agricultural product demonstrations and contests.

Franklin County's efforts included an agricultural exposition at the Chambersburg Mall, farm tour, pumpkin caper, children's poster contest, job exchange, annual banquet, award presentations and speakers bureau.

Other innovative approaches practiced around the state included the local buy Blair County agricultural products campaign, the

mall events in Washington County, the Business Family Awards and Farm-City Week Banner strung across town in Mifflin County, farm family awards, public service announcements and Congressional visits.

The Lebanon County Committee, by virtue of their win, has earned the opportunity to host next year's statewide Farm-City Week kickoff luncheon. Next year's Farm-City Week Celebration is slated for November 15-21, 1990.

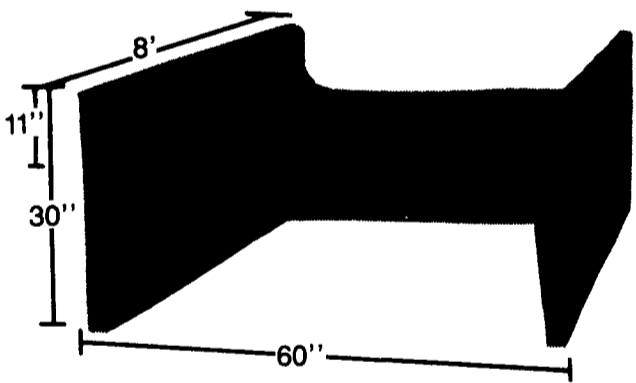
Secretary Wolff encouraged more local organizations to enter the annual contest. Nominations should be submitted to the Pennsylvania Farm-City Council by December 15. Further information is available by calling 717-540-9300.

Syri-Con Precast Concrete Corp.

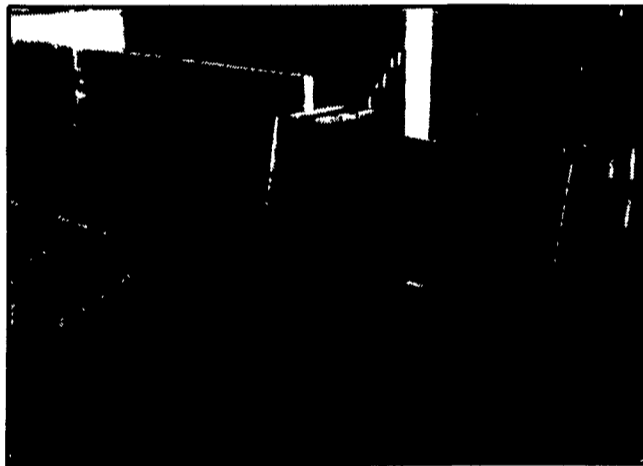
477 E. Farmersville Road

New Holland, PA 17557

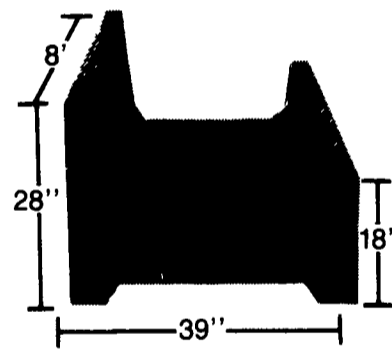
717-355-2361



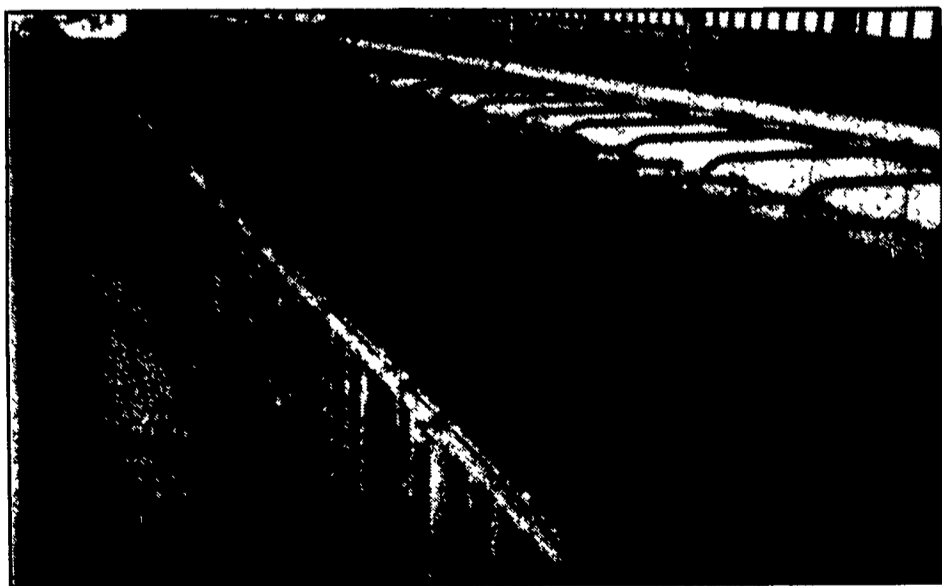
H-Bunks



Waffle Hog Slats
Concrete Hog Penning



J-Bunks



Heifer Slats

"Waffle Slats"

The only concrete slat with
Your Animals Comfort In Mind

Contact Us For Complete Details On Heifer Cattle,
Hog And Free Stall Barns