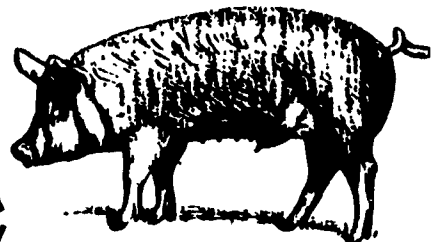


THANK YOU



AND BEST WISHES TO THE

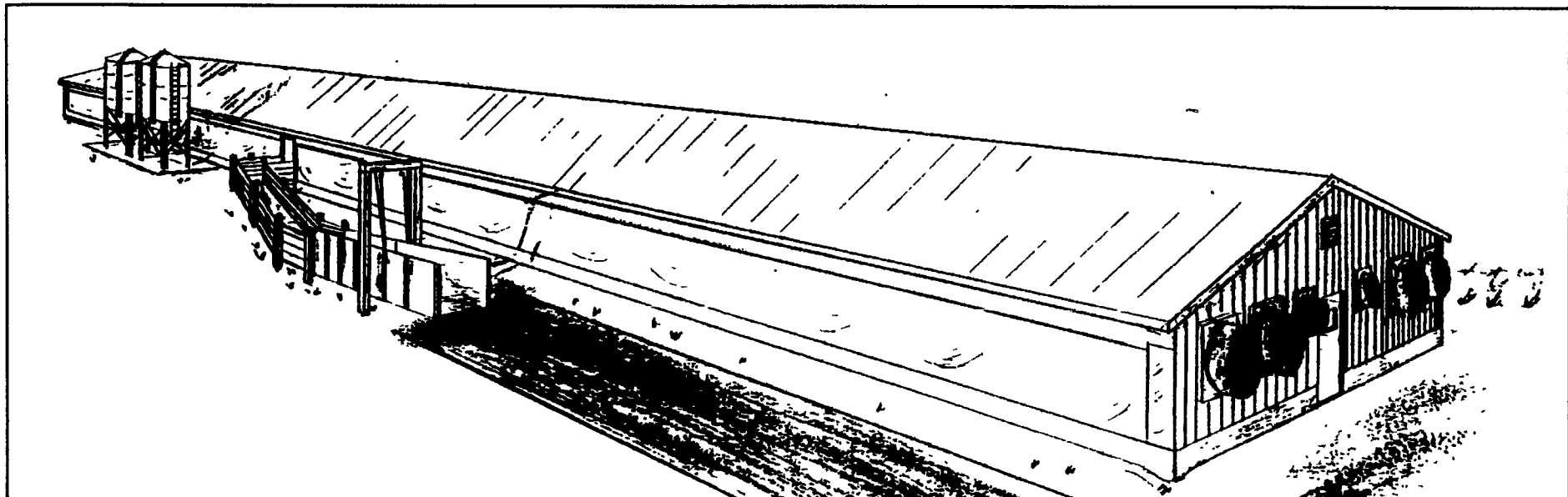
WILLIAM & LYNNE CLAXTON FAMILY

Womelsdorf, PA

**FOR SELECTING TRI-COUNTY & KING CONSTRUCTION
TO DESIGN & BUILD YOUR 2000 HEAD
ALL-IN ALL-OUT SWINE FINISHING UNIT**

Sincerely

Elmer King, John King, John C. Zimmerman, Terry L. Weaver, Galen L. Weaver



SPECIAL FEATURE: TUNNEL VENTILATION

Aerotech engineers have developed an excellent ventilation system for finishing and breeding animals that delivers very precise ventilation control and exceptional cooling power. Tri-County is an authorized Aerotech sales, service and installation center.

OTHER FEATURES:

■ **PRECISE** Poured Walls

■ **FABRAL** Aluminum, Steel Roofing & Siding

■ **PLYCO** Prehung Aluminum Doors



Wet Cast Gang Slats
Stainless Steel Feeders
Solid Steel Fencing

■ **GSI** Feed Bins

■ **CHORE-TIME** Feed Delivery Systems

CONTRACTS ARE AVAILABLE

For quality-minded people who are capable of managing a new or newly renovated 1000-2000 head total slat finishing facility. Benefits Include Positive Cash Flow, Minimal Labor, Flexible Hours, Fertilizer Value, Low Maintenance & Depreciation Write-Off. ★ Call For Details ★



Designed & Equipped By
TRI-COUNTY

CONFINEMENT SYSTEMS, INC.

608 E. Evergreen Rd., Lebanon, PA 17042
Ph: 717-274-3488
Hours: Mon.-Fri. 7:00 to 4:30 Sat. 8:00 to 12:00

Construction By
KING CONSTRUCTION CO.

601 Overly Grove Road
New Holland, PA 17557

(717) 354-4740