

Dairy and Livestock Sales

Public Auction Register

Closing Date Monday 5:00 P.M.
of each week's publication

OCTOBER

SAT. OCT 6 - 9AM, Camp Deer Park Benefit Auction, Dittenbach's New Holland Auction Center, Ltd., 100 West Jackson St., New Holland, Pa. 17557. Dittenbach's Auctions.

FRI. OCT. 12, State Graded Feeder Pig Sale, Exit 12 East off I-81, Carlisle Livestock Market, 717-249-4511

FRI. OCT 12 - 9AM, Farm Equipment & Supplies. Dittenbach's New Holland Auction Center, Ltd., 100 West Jackson St., New Holland, Pa. 17557. Dittenbach's Auctions.

Holland, Pa. 17557. Dittenbach's Auctions.

TUES. OCT 23 - 9AM, Quilts, Crafts, & Buggies. Dittenbach's New Holland Auction Center, Ltd., 100 West Jackson St., New Holland, Pa. 17557. Dittenbach's Auctions.

FRI. OCT. 26, State Graded Feeder Pig Sale, Exit 12 East off I-81, Carlisle Livestock Market, 717-249-4511.

WED. OCT. 31 - 9AM, Dairy Show & Sale, New Holland Sales Stables, Inc., New Holland, PA.

November

FRI NOV. 9, State Graded Feeder Pig Sale, Exit 12 East off I-81, Carlisle Livestock Market, 717-249-4511.

FRI. NOV. 9 - 9AM, Farm Equipment & Supplies. Dittenbach's New Holland Auction Center, Ltd., 100 West Jackson St., New Holland, Pa. 17557. Dittenbach's Auctions.

FRI. NOV. 23, State Graded Feeder Pig Sale, Exit 12 East off I-81, Carlisle Livestock Market, 717-249-4511.

SAT. NOV. 24 - 9AM, Toys, Crafts, Gifts, & Tools. Dittenbach's New Holland Auction Center, Ltd., 100 West Jackson St., New Holland, Pa. 17557. Dittenbach's Auctions.

December

FRI. DEC. 14, State Graded Feeder Pig Sale, Exit 12 East off I-81, Carlisle Livestock Market, 717-249-4511.

FRI. DEC. 28, State Graded Feeder Pig Sale, Exit 12 East off I-81, Carlisle Livestock Market, 717-249-4511.

DAIRY CATTLE SALE

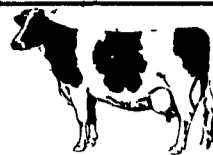
WEDS., JAN. 17
7:30 P.M.

Consignments Wanted
Springing or Fresh
Cows and Heifers
Open or Bred Heifers
Started Heifer Calves
Service Bulls

FOUR STATES LIVESTOCK SALES
Hagerstown, Md.
Phone 301-733-8120
Auct. Bob Hooper

Dairy and Livestock Sales

NEW HOLLAND SALES STABLES, INC.



Located 12 Miles East of Lancaster, just off Rt. 23,
New Holland, Pa.

SPECIAL DAIRY SALE CONSIGNMENTS

For
WEDNESDAY, JANUARY 17, 1990
Heifer Sale Starts At 11:00 A.M.
Fresh Cows & Springers At 12:00 Noon

15 OPEN VACCINATED HEIFERS, SEVERAL AI SIRE, SOME WITH DAMS W/RECORDS UP TO 22,000M.
(2) PUREBRED VACCINATED SPRINGING HEIFERS; 1) A LUCKY DAUGHTER, DAM BELL DAUGHTER, 2 YEAR OLD RECORD OVER 15,000M. 3.7T. BRED TO JAMAICA. 2) SIRE BY PEN-COL BULL, DAM OVER 17,000M, BRED TO BELTONE.

- * 1 load fresh and springer cows consigned by Norman and David Kolb.
- * 1 load fresh and springer cows consigned by Merle Brenneman.
- * 1 load fresh and springer cows consigned by Marvin Eshleman.
- * 1 load fresh and springer cows consigned by Raymond Smucker.
- * 1 load fresh cows consigned by Dale Hostetter.
- * 1 load fresh cows consigned by Albert Albright.

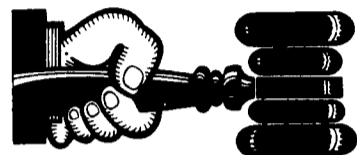
PLUS MANY MORE CONSIGNMENTS

SELLING WEDNESDAY, JANUARY 24, 1990

LANCASTER COUNTY HERD
60 COWS, ALL AI BREEDING, 1/2 REGISTERED, BALANCE GRADES. FREE STALL HERD.
MORE INFORMATION ON HERD AT RING SIDE DAY OF SALE.

For More Information Contact:

Norman Kolb, Pres. 717-397-5538 David Kolb, V. Pres.
Barn Phone 717-354-4341



AUCTIONEER'S DIRECTORY



KREIDER & KLINE AUCTIONEERS

COMPLETE PROFESSIONAL AUCTION SERVICE
REAL ESTATE — FARMS & RESIDENTIAL
PERSONAL PROPERTY — ANTIQUES —
FARM STOCK SALES — LIQUIDATIONS

RANDAL V. KLINE
AUCTIONEER REALTOR
717-733-1006

LOYD H. KREIDER
AUCTIONEER
717-786-3394

ROY E. GOOD, JR.
AUCTIONEER
215-445-4309

DEALER IN ALL KINDS OF LIVESTOCK

Also Crippled & Down Cattle

MARLIN S. IRWIN

Quarryville, PA
PH: 717-786-3016

ELTON HORNING FARM AGENCY



REAL ESTATE - AUCTIONEER
MORTGAGE BROKER - APPRAISALS

RON & BOB BARD

717-786-1146 — 717-786-4246

PROFESSIONAL Auctioneering

PAUL E. MARTIN
R.D. 1, Box 553
Stevens, Pa. 17578

JOHN D. STAUFFER
217 Andrea Dr.
Lititz, Pa. 17543

Complete Auction Service. We assist you and advise you from the planning stages of your auction to the completion of your auction.

For A Consultation In Your Home Call
Paul (717) 733-3511 — John (717) 665-5099
Licensed and Bonded

Auctioneer:

Steve Petersheim:
Steve Jr.



COMPLETE AUCTION SERVICE

Antiques
Household Goods
Farm Equipment
Real Estate

Take Note - Our New Phone Number
215-593-2828

ROGERS COMMUNITY AUCTION INC.

Located 8 Miles East Of
Lisbon, Ohio Or One Mile West Of
Rogers, Ohio On St. Rt. 154.

FRIDAYS

Produce, Egg, Miscellaneous Auction
Starts At 6 P.M.

Poultry Auctions Start At 7 P.M.

Doors Open At 7:30 A.M.

To Accept Consignments

Open Air Market All

Day And Evening

Doors Open At 7:30 A.M. To Rent

Market Spaces. Over 2.5 Miles Of

Outside Concessionaires And 30,000

Sq. Ft. Under Roof.



WEDNESDAYS

Farm Machinery
Consignment Auction

The F.I. WEDNESDAY EVENING
OF EACH MONTH at 6 P.M. sharp.

We are open the preceding Tuesday of each sale day to check in consignments from 8 A.M. to 8 P.M. Handling farm machinery, lawn and garden equipment, tools, fire wood, cut lumber and related miscellaneous items. Five auctioneers operating simultaneously.



Hay And Straw Grain
EVERY WEDNESDAY

selling truck
load lots by the bale or ton
starting at 1 P.M.

Barn Opens at 8 A.M. to Consign
Jim and Ken Baer

Auctioneers and Managers

Phone (216) 227-3233 or (216) 227-3236
"Sells Every Week Since 1955"

PUBLIC SALE

SATURDAY, JANUARY 27, 1990

10:00 A.M.

Located 10 miles south of Strasburg, 2 miles southwest of Route 896 from Nine Points, 20 miles southeast of Lancaster, 8 miles north of Oxford, at 336 Bell Road, Colerain Twp., Lancaster Co., Penna.

BUTCHERING EQUIPMENT

Steam gas auto boiler, with whistle; 30 quart sausage stuffer with air motor; Butchers Meat Grinder A-1 with hyd. motor; Butcher Bay air powered A-1 Band Saw; Meat slicer with stacker; pressure washer; track scales; 2 ton hoist with hyd. motor; Air Saw.

Stainless Steel 12"x32" table with back; two 8' Butcher block cutting tables; **OLD FASHIONED 30"x36" CHOPPING BLOCK**; Large and Medium size iron kettles; Large steel furnace top to fit kettles; Copper Kettles; 30"x30" grill.

Fairbanks platform scales; Dayton 30 lb. meat scales; scalding trough; Stainless Steel tubs; Deer and Beef holding racks; track rollers and hangers; Stainless pots and pans; stirrers; knives; forks; tool hanger; paper rollers; Stainless sinks; Beef & Hog gamble sticks; Large and small cleavers; 4-wheel carts; plastic tubs; 30 gallon crock; two bologna horns; Dual sided knife sharpener.

Misc. Items- Extension table with 12 boards; Brass hand bell; Belt air sander; Roll top bed; Kenmore kitchen heatrola; Small & medium wishing wells; 410 Shotgun; 222 gauge 3 shot rifle with scope; McD. 1 1/2 h.p. Gas Engine; Blacksmith Anvil.

FARM EQUIPMENT & SUPPLIES

Fox Custom "70" Harvester with 125 h.p. "A.C." Diesel Motor; 2-way Hyd. plow, like new; John Deere KBA 24 disc. harrow; Spring harrow; Alfalfa seeder; Set of double tobacco ladders; Bob sled; two Auto turn fore-trucks; 275 gallon oil tank with pump, good condition; Wooden wheel running gears; 500 gallon water tank; Tobacco bed seeder; 5 farrowing crates.

Welder with 100' cable; 5 h.p. Air compressor; Iron Bender; pipe threader; platform scales; air drill; air nailers; air staplers; air skill saws; air sander; air motors; two Hyd. pumps, like new; 5 Hyd. motors; Hyd. hoses & couplings; Hyd. lift; Air pipes; Bolts of all sizes; Electric Motor; Wooden mail boxes; Oilers; 15 milk cans.

LIVESTOCK

Two Pair of work horses; 10 Yr. old bay mule; Two 300 Lb. fat hogs; Two 1000 Lb. steers; Angus bull; Two sides of beef at auction.

Sale at 10:00 A.M.
Butchering Equipment sold first.

Owner, **JOSEPH S. KAUFFMAN**

Dittenbach's Auctions - 225-L
393-4464 - 355-7253 - 354-3297

Pig Roast and Sausage sandwiches available for lunch.
At private treaty - 3 cases of Martin's Shankless Hams;
Sausage; Pudding; Scrapple; Bologna; Lard.