

Fiberglass and poly calf hutches, \$105 to \$208  
Lancaster Co  
717-627-2499.

FOR SALE (12) Used DeLaval Super Flo Claws, \$85/each, Used DeLaval Shells, Used DV 300's, \$150/each, Used Surge Mini Orbit, Used Surge Eclipse Used Surge VSO Takeoff Used Boumatic Claws, Shells, Pulsators & Little Champ Takeoffs Used Nupulse Units, Used Westfalia Units, Used Westfalia & DeLaval Bucket Units, Used Weigh Jars, plus many other items FREE UPS Shipping Satisfaction Guaranteed Call E-Zee Milking Equipment, 3910 E Newport Rd, Gordonville, Pa 17529. 717-768-7599

FOR SALE Agway bedding chopper w/7 hp Honda engine Good condition (215)286-6059

For Sale Calf hutches & kennels w/inside feeding alley Stoltzfus Woodwork, Box 616, White Horse Rd, Gap, PA 17527 Call 717-442-8972

Weaverline Carts, rebuilt, hydrostatic, like new 717-667-3583

Weaverline gear drive 330 silage cart, excellent condition. Lancaster Co (717)529-1001.

**USED TANKS**

- 500 Gal. CP
  - 525 Gal. Sunset
  - 600 Gal. Mojonnier
  - 600 Gal. DeLaval
  - 800 Gal. Girton D2
  - 800 Gal. Round Storage
  - 1000 Gal. Girton
  - 1000 Gal. Girton, Round
  - 1000 Gal. Sunset Round
  - 1500 Gal. Mueller "OH"
  - 1500 Gal. Dari-Kool
- Hagerstown, MD  
301-797-3921

- (2) 1250 Gal. Mojonnier
  - 1000 Girton
  - 900 Gal. Mueller OH
  - 600 Mojonnier
  - 500 Mojonnier
  - 500 Girton
  - 500 Milkkeeper
  - 400 Mojonnier
  - 400 Girton
  - 300 Girton
  - 300 Sunset
  - 300 Zero
- Holding Tanks Available  
Used Compressors  
All tanks are in stock, in good condition & ready for immediate delivery

**MARTIN'S REFRIGERATION INC.**  
Fayetteville, PA  
717-352-2783

Now... Transport your calves the modern way!



New Cal-Cart loads and unloads from ground level. Perfectly balanced. "Floats" over rocky ground—through mud and snow. All metal frame and transport box. Aspenite floor. Rubber-tired wheels.

See it on display! Call

**ELMER M. MARTIN**  
RD 2  
Myerstown, PA  
PH: 717-949-2081

WANTED: 2" glass pipe-line, 4' on center, top nipples Bradford Co. 717-596-2482 or 596-4148

WANTED: Germania automatic takeoffs and 65# DeLaval glass weigh jars. Call or write Mid-State Dairy Automation, DeRuyter, NY, 13052, (315)852-6000, (315)852-9591

WANTED: One or two hydraulic units for Jamesway shuttle barn cleaner, must be in good shape. 717-785-3650 after 8 p.m.

WANTED TO BUY Germania (Arm) Take Offs-Right Handed; Weigh Jars. Call 814-382-3245 or 814-382-2922

Wanted to buy 250' pipe-line w/4 milking units, prefer Visitron (215)445-7132

12 DeLaval Automatic Take-Offs.  
Alfa Level Feeding System.  
Yield Master DeLaval Wave Meters, All Computerized.

Lease Take Over  
260 Transponders  
**717-784-5255**

**BETTER HEALTH AND PRODUCTION**

with multiplied feeding. Individual grain or grain & silage feeders. Electric motor with timer operated.

**Stoltzfus Feeders**

Box 5254 Denlinger Rd.  
Gap, PA 17527

**Fisher & Thompson Inc.**

DAIRY & MILKING EQUIPMENT  
SALES & SERVICE

24 HOUR SERVICE

We Ship Parts Daily UPS

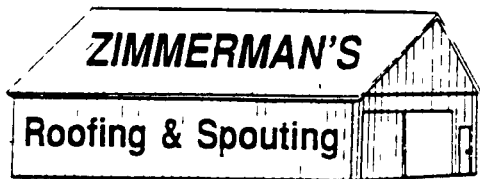
ON THE FARM ROUTE SERVICE

**USED EQUIPMENT**

- Chore-Time HMC Auger & Pipe
- Chore-Time 55 MM Auger & Pipe
- 4 Bou-Matic Milk Sentry Sensors
- Bou-Matic Claws
- Westfalia Claws
- 1 - Mueller 2" Refrigerated Receiver w/4 H.P. Compressor (Excell. Cond.)

AMOS FISHER  
RES.: 717-687-8871  
RICK THOMPSON  
RES 717-627-1162

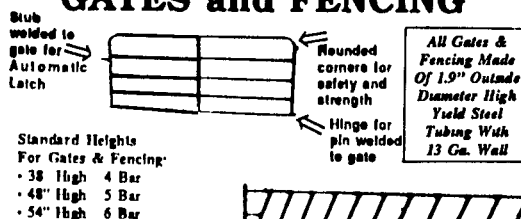
127 NEWPORT RD  
LEOLA, PA 17540  
717-656-3307



**ZIMMERMAN'S**  
Roofing & Spouting



**GATES and FENCING**



Standard Heights For Gates & Fencing:  
• 38" High 4 Bar  
• 48" High 5 Bar  
• 54" High 6 Bar

**SLANT BAR FEED THRU FENCE**  
Custom Built To Any Length

- HEADLOCKS • LOOP STALLS
- AUTOMATIC HEAD GATES

- McELROY Metal Roofing & Siding
- **PIVCO** Doors, Windows & Door Tracks

Delivery Available!

Newville, PA (717) 776-5951

**Used Milking Equipment**

- \* Automatic pipeline washers
  - \* Bou-Matic alternating pulsators
  - \* Automatic take-off with arms
  - \* Automatic take-offs with arms and meters
  - \* Used vacuum pump
  - \* Westfalia Bio-Milkers
- Lancaster Dairy Farm Automation**  
Lititz, PA  
(717) 627-4824

**SMUCKER'S SALES & SERVICE, INC.**  
RD #2, Box 21 New Holland PA 17557  
(717) 354-4158

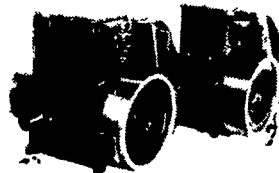
If No Answer, 24 Hr. Service, Call (717) 354-4158  
DIESEL AND REFRIGERATION SERVICE

Authorized Dealer Specializing In  
**LISTER And Also PETER Diesel Engines**



LISTER  
AIR-COOLED

TS2/TS3  
AIR-COOLED  
DIESELS  
1 1/2 to 132 H.P.



Ask About Diesel  
And Bulk Tanks -  
Completely  
Installed



Available: Used Mueller • Sunset • Girton • Bulk Tanks

**SPECIAL OF THE WEEK**  
ORDER STALL MATERIALS NOW  
AND SAVE!!!

Due to the increased cost of galvanizing, prices will increase February 1st

**EQUIPMENT FOR SALE OR RENT**

- BADGER**
- 3,350 gal. liquid manure tank
  - 1,500 gal. and 2,300 gal. vacuum tank
  - 330 Bushel Manure Spreader
  - Bar Corn Roller Mill w/Blower
  - Pit Pump
  - Mower Conditioner
  - Weaverline Cart
  - Lagoon Pump
  - Lagoon Super Mixer
  - Forage Wagons
  - Forage Blowers
  - Bedding Chopper for Mulching
  - Handy High Pressure Washers
  - Oswalt Mix Wagons
  - Post Hole Digger
  - Badger Snow Blowers
  - We Do Aluminum Welding



**WE SHIP UPS DAILY**  
**SHOW-EASE STALL CO.**  
573 Willow Rd., Lancaster, Pa.  
Ph: 717-299-2536

**RUBBER MATTING AND USED BELTING**

- COMFORT STALLS
  - HORSE STALLS
  - HOG PENS & HOUSES
  - FREE STALLS
  - CATTLE & HORSE TRAILERS
- All Sizes Available & Custom Cut  
Phone 301-885-5045

**US AGRI-SYSTEMS**

SPECIALIZED FARM EQUIPMENT

OXFORD, PA 19363  
(800) 222-2948 (301) 398-2948

MANURE MANAGEMENT SPECIALISTS

**ATTENTION BUY OUT FARMERS**

We Need Good Used Tanks  
600 - 6,000 Gal. - Call Us

- SPECIAL -  
All 500 Gallon Tanks  
\$1.00 Per Gallon

**USED BULK TANKS**

All Tanks Guaranteed A-1 Working Condition

- 250 Gal. Dari-Kool Self Contained
- 300 Gal. Solar
- 350 Gal. Milkkeeper
- 400 Gal. Sunset
- 400 Gal. Mojonnier
- 400 Gal. Vac. Cooler
- 400 Gal. Milkkeeper
- 400 Gal. Girton
- 500 Gal. Girton
- 500 Gal. Surge
- 500 Gal. Mojonnier
- 500 ~~SOLD, PA~~
- 500 Gal. Jamesway
- 500 Gal. Milkkeeper
- 500 ~~SOLD, PA~~ Putter
- 535 ~~SOLD, PA~~
- 600 Gal. Dirton D4
- 600 Gal. Mueller "M"
- 600 Gal. Milkkeeper
- 600 Gal. Mojonnier
- 600 Gal. Zero
- 600 Gal. DeLaval
- 600 Gal. Jamesway
- 625 Gal. Sunset
- 700 Gal. Mueller
- 700 Gal. Mueller "M" Flat Top
- 735 Gal. Sunset
- 800 Gal. Dari-Kool
- 800 Gal. Girton
- 800 Gal. Girton D5
- 800 Gal. DeLaval
- 800 Gal. Mojonnier
- 800 Gal. Dari-Kool, Late Model, Recond.
- 800 Gal. Mueller "M" Flat Top
- 800 Gal. Sunset
- 800 Gal. Mueller "OB"
- 1000 Gal. DeLaval
- 1000 Gal. Dari-Kool
- 1000 Gal. Mueller "O"
- 1000 Gal. Mueller "OH"
- 1000 Gal. Girton D5
- 1250 Gal. Mueller "OH" Recond.
- 1250 Gal. Zero
- 1250 Gal. Milkkeeper
- 1500 Gal. Mueller "OH"
- 1500 Gal. Girton
- 1500 Gal. Mueller "OH" Digital
- 2000 Gal. Mueller "OH"
- 2000 Gal. Mueller "OH"
- 2000 Gal. Lifetime
- 2000 Gal. Girton
- 2500 Gal. DeLaval
- 3000 Gal. Lifetime
- 3000 Gal. Dari-Kool
- 3500 Gal. Mueller, Nice
- 4000 Gal. Mueller "OH"
- 4000 Gal. Dari-Kool
- 5000 Gal. Girton
- 6000 Gal. Zero (late model)
- 6000 Gal. Mueller

- (4) 10' Tube Coolers
- (1)(2) Used Thermo Stor III • Thermo Stor 100
- 600 GAL. 31" POURING HEIGHT VERY NICE
- 105 Gal. Mueller Fre-Heater
- 400, 500, 600, 800 & 1000 Gal. (Storage Tanks)
- Used 3 & 5 H.P. Electric Motors

**USED COMPRESSORS**

3 H.P., 4 H.P., 5 H.P. — R12 & R22  
24 Hrs. - 7 Days A Week - Refrigeration Service

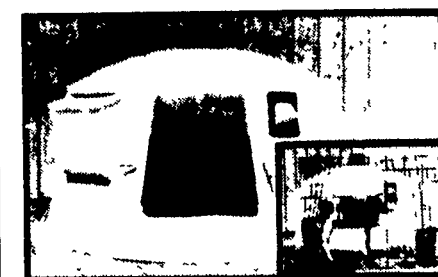
Installation, Sales And Service

**RAY SHENK**

505 E. Woods Drive Lititz, PA 17543  
Sales 717-626-1151  
24 Hr. Service 717-627-2747

**Poly Dome Means Healthier Calves.**

All-Season



POLY DOME 60 (H) x 86 (D)

**DON'T ELIMINATE PROFITS!**

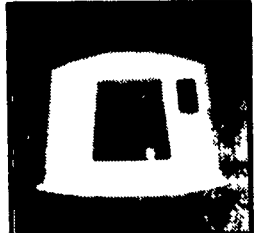
Poly Dome will help put money back into your pocket faster. Why risk burnt lungs, frozen ears and tails? Poly Dome will help eliminate ammonia build-up. Your calves will be healthier and they'll grow faster. Your heifers will be part of your money-making milking herd sooner. And with three different dome styles to choose from, you can select the one that works best for you - Poly Dome, Poly Square or Mini Dome.

Raising calves is no easy chore! But dairymen everywhere have discovered the benefits of raising their calves in Poly Dome Calf Nurseries. In fact Poly Dome is the first choice of dairy farmers throughout the United States and Canada. After comparing Poly Dome Calf Nurseries with modified wooden hutches, the University of Minnesota-Morris found that Poly Dome hutches were healthier and grew faster than calves kept in wooden huts. And Poly Dome is now being tested at several universities across the country with similar results.

According to a study at Vermont Technical College, this rotatable air vent distinguishes Poly Dome from other huts on the market.



POLY SQUARE  
5 (W) x 6 (L) x 54 (H)



MINI DOME  
72 (D) x 68 (H)



281 Farmland Rd., Leola, Pa. 17540

717-656-4166

1-800-543-0060

PA: 1-800-322-0060