

## Unverferth Rolling Harrow

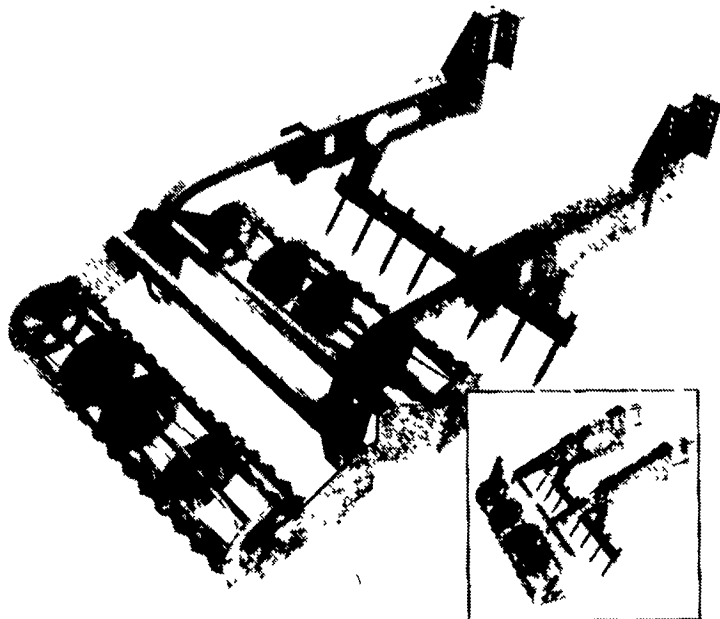
KALIDA, OH — Equipped with universal mounting arms, the Rolling Harrow® II soil conditioner from Unverferth Manufacturing Company, Inc., attaches to virtually any chisel plow, field cultivator or other primary tillage tool.

The mounted Rolling Harrow II features a spike tooth leveling bar and two rollers, one aggressive and the other passive. The spike-tooth leveling bar levels ridges, preparing an even surface for mixing while the rollers mulch, agitate and mix the top 2 to 3 inches of soil. The compaction and erosion

resistant coarse soil is left on the top and the finer soil is deposited at planting depth. The result is a seed environment that is more resistant to crusting and better retains moisture. The mounted Rolling Harrow II also incorporates chemicals 2 to 3 inches into the soil.

A single roller model that utilizes the aggressive roller from the Rolling Harrow II soil conditioner is also available.

For more information or free literature contact Unverferth Mfg. Co., Inc., P.O. Box 357, Kalida, OH 45853, telephone 800/322-6301 or 419/532-3121.



Unverferth's Rolling Harrow® soil conditioner with universal mounting arms attaches to any chisel plow, field cultivator, or other primary tillage tool. The Rolling Harrow II features a spike-tooth leveling bar and an aggressive and passive roller.

## M&W Gear Offers Rotary Hay Rake



The SR320 rotary hay rake from M & W Gear Company has a working width of 10 feet 6 inches and is narrowed to 7 feet 3 inches transport width by storing the pick-up tines. A cam track lifts tines over material gathered and 24 tempered tines gently spread material into windrows.

## PSU Farm Show Exhibit To Focus On Careers, Safety

HARRISBURG (Dauphin Co.) — Penn State's exhibit at the 1990 Pennsylvania Farm Show will focus on careers in agriculture, chemicals in the home, food safety, crop management and farm safety.

College of Agriculture faculty, students and staff will be available to discuss academic majors, available programs and career-related information. A new college quiz board will include questions on the history of Penn State, the scope of agriculture, the undergraduate and graduate programs available in the college and career opportunities in agriculture.

Part of the Penn State exhibit

will feature the cooperative efforts of the Pennsylvania Department of Agriculture and the College of Agriculture in integrated pest management education. There also will be information concerning the cooperation of the College of Agriculture and the Crop Management Association in collecting data and implementing management recommendations.

The use and proper disposal of everyday chemical products used in the home will be the focus of another part of the Penn State exhibit. While many people consider industrial and commercial enterprises to be primary sources of waste-induced water pollution, individual consumers play a major role in this growing problem. A computer quiz will allow individuals to test their knowledge of proper disposal techniques.

Detailed information about food safety and nutrition will also

be available at the exhibit. The quality of our food supply has become a topic of widespread concern for consumers, farmers, the food industry and government regulators. The publicity has caused people to make assumptions that are unfounded or only partially true. Farm Show visitors can test their knowledge of food safety issues on an electronic quiz board at the exhibit.

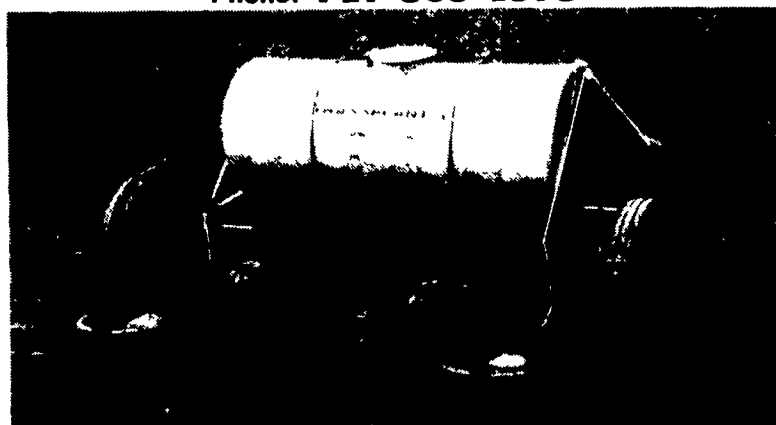
Visitors to the Penn State exhibit can see a built-to-scale remote-controlled tractor model demonstrate rollover hazards. Operators use the model to show safe and unsafe driving methods and are available to answer a variety of questions during and after demonstrations. In addition to the rollover demonstrations, information will be provided about other college programs in agricultural safety, including fire, suffocation and equipment hazards.

### HERSHEY TRANSPLANTER

Manufactured by B & G Machine Co.

RD 3, Box 7658, Racehorse Dr., Jonestown, PA 17038

Phone: 717-865-4578

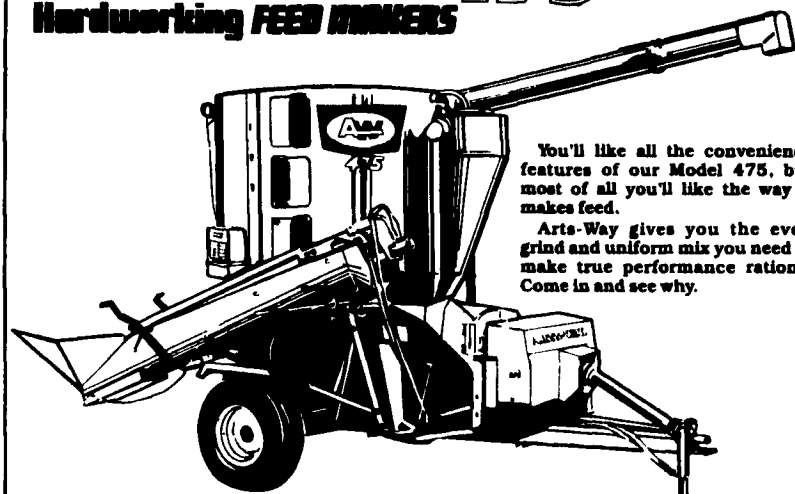


### TWO ROW DRAWN PLANTER

Single row planters available:  
Drawn Type or Three Point Hitch  
Parts Available

### ARTS-WAY 475

Hardworking FEED MIXERS



You'll like all the convenience features of our Model 475, but most of all you'll like the way it makes feed.

Arts-Way gives you the even grind and uniform mix you need to make true performance rations. Come in and see why.

AREA REPRESENTATIVE: MILTON R. ANDERSON, INC.  
P.O. Box 6126, Harrisburg, PA 17112  
(717) 652-6043 or (800) 543-3000, Ext 2002

RISING SUN, MD  
Ben Haines  
301-658-5359

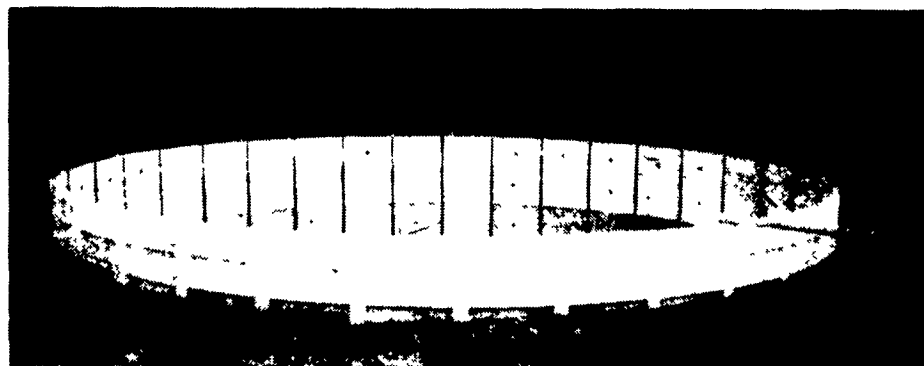
ROME, PA  
Histands Farm  
Centers  
717-744-2371

WAYNESBORO, PA  
B Equipment, Inc.  
717-762-3193



### Manure management systems to match your kind of livestock, type of manure ...and economics

"PLAN NOW for 1990 Construction" Contact us to discuss your MANURE MANAGEMENT PLANS



### PRECAST CONCRETE - CIRCULAR TANKS

- \* 8' or 12' depth
- \* 24' thru 90' diameter
- \* Inground or above ground
- \* Exclusive: Tongue & groove vertical joints  
Continuous cable around tank  
Liquid tight closure pour at base
- \* 50 year service life



### Sollenberger Silos Corp.

A Nitterhouse Company  
Box N Chambersburg, PA 17201 (717) 264-9588

SINCE BEFORE 1910

Office Number - 717-264-9588

For Upright Silos Call  
Bob Francis  
717-532-6848

Evenings

For Bunker Silos & Manure Systems  
Call Tabb Justus  
717-762-8663  
or Mike Hair  
717-263-0792