

843 Bobcat
743 Bobcat
742 Bobcat
642B Bobcat
542B Bobcat
440B Bobcat
1600 Bobcat Articulated Loader

Used Loaders
L1200 Prime Mover... **Reduced \$6,500**
Nothing Matches The Versatility Of A Bobcat Skid Loader
For More Information Call:
SHEETS BROS.
1061 Carlisle St.
Hanover, Penna.
717-632-3660
HAPPY NEW YEAR!

ZETOR

Zetor ND9031 4WD
Forklift \$26,500
Zetor 7711 Low
Profile 66 HP \$13,400
Zetor 52452, Cab \$13,525
Zetor 5211 OE, 13 HP \$9,275
Zetor RUR 55 New 5
Ton Spreader \$5,535

SHEETS BROS.

1061 Carlisle St.
Hanover, Pa.
(717) 632-3660

USED TRACTORS

JD 4850 1987 MFWD, 1650 Hours \$59,000 Coming In
JD 4440 1980 FWA, Duals \$24,000
JD 4630 1977 QR, Duals \$21,000
JD 4630 1976 QR, Duals \$21,000
JD 7020 4WD, PTO, 3 Pt. Hitch, New Motor \$15,900

PLANTERS

Kinze 8 Row Double Frame, 11 Total Units \$ 7,500
JD 7000 8 Row 30" \$ 8,500
JD 7000 6 Row 30" w/5 Row Splitter \$11,000
JD 7100 13 Row Soybean Special, Coming In \$12,500
New JD 8300 Drill, 16x10 \$ 3,500
Haybuster No-Til Drill, 12', Nice Shape \$ 4,500
2 Billion Fold Up Culti-Mulcher \$ 4,000 And \$ 5,000

JONES IMPLEMENT CO.

PO Box 397
Cambridge, MD 21613
301-228-0922
301-822-7126

USED EQUIPMENT WHITE TAG SALE

USED PLANTERS

AC 600-6R Planter, 6x30", No Till, Dry Fert., Parts Planter, Was \$1,090 \$875 (V9376)
IH 386 Planter, Planter Toolbar, 6x38", Good Toolbar, Was \$1,900 \$350 (V9299)
IH 400 Planter, 6x30", No Till, Markers-Parts Planter, Was \$900 \$500 (V4341)



IH 800-6R Planter, 800 Cyclo, 6x30", Double Disc Openers, Liquid Fertilizer, Monitor, This Planter Plant To Bring Up Seed Quickly Was \$7,900 \$6,500 (V4342)

WH 5400 Air Planter, 6x30", No Till, Insecticide, Good Shape (V3676) Was \$2,200 \$1,750



JD 7000 Planter, 7000-8x30" Conservation, No Till Coulters, Folds To Narrow Transport, John Blue Liquid Fert. Pump (V4397) Was \$8,975 \$7,950



USED MISCELLANEOUS

IH 47 Baler, 540 PTO, #10 Thrower, Runs, Was \$1,200 \$1,150 (U4491)
Fox Blower, 56" Fan, 540 PTO, Was \$690 \$450 (U3955)
YR-A-R 211 Cab, Fits IH 06, 56, 66 Series, Was \$890 \$500 (W9200)
RE 14C Scraper, 14 Cu. Yd. Scraper Pan, Pull-Type \$18,500 (V3433)
IH 50 Shredder, 540 RPM PTO 12.5' Cut, Was \$1,850 \$1,750 (U3812)
Century 500G Sprayer, 35' Boom, PTO Pump, Plastic Tips, Was \$2,850 \$2,500 (V3361)
JD 300G Sprayer, 30' Boom, Blue Grnd Drive Pump, PTO Agitator Pump, Was \$3,900 \$2,500 (V4123)
Chevy 700G Spray Truck, 700G Sprayer, 40' Boom, Hyd. Pump w/Elec. Controls, Foam Marker, Was \$5,800 \$4,800 (V3551)
Century 130G Tanks, Saddle Tanks, 130G, Pump & Controls, Was \$850 \$595 (V2717)
Case 17x7 Drill, Single Disc, Cheap Drill \$275 (V4529)
JD FBB-18x7 Drill, Double Disc, Grass Seed, Press Whls, Was \$1,400 \$1,275 (V4382)
IH 510 18x7 Drill, Double Disc, Fertilizer, Good Condition, Was \$2,200 \$1,950 (V4639)
IH 5100 21x7 Drill, Double Disc, Grass Seed, Excellent \$2,200 (V4567)
Snap-018.4x34 Duals, Firestone, 6 Ply, Snap On \$395 (W4196)
Farmec 30' Elev., Good Condition, Was \$895 \$750 (V4380)
NH 352 Grinder Mixer, 540 P10, Fair \$2,100 (V4036)
GP 12' Hitch, Pull Hitch For Mounted Drill, Was \$1,200 \$975 (V4330)
MF 205 Spreader, Top Beater, 540 PTO, Runs OK, Was \$1,000 \$950 (V4548)
IH 3204 Disc Mower, 3 Pt., 5' Disc Mower, 4 Disc, Was \$2,375 \$2,150 (U4544)
WO 315, 15' Mower, Flexwing, 540 PTO, Good Condition, Was \$3,900 \$2,950 (U4574)
WO RM600, 6' Mower, 3 Pt. Finishing Mower, 3 Spindle, Was \$1,500 \$1,295 (U3736)
WO C80, 7'8" Mower, 540 PTO, 3 Point, 2 Spindle \$1,100 (U3554)
Tub Grinder FH 900-B (V4623)
JD 660 Rake, Ground Drive, 9' Hay Rake, Was \$1,850 \$1,675 (U4366)



JD 27 Shredder, 1000 RPM PTO, Good Balanced Machine Was \$2,900 \$2,250 (U4373)



GP 12' NT Drill, 7.5" Spacing, No-Til Hitch, Mid Drill Was \$9,800 \$8,900 (V4607)



KR 5210 10' Drill, No Til, 7" Spacing, Excellent Cond. \$9,500 (V4545)



IH 1190, 9' Mower Conditioner, 540 PTO, 9' Mower Conditioner Was \$4,850 \$4,350 (U4552)



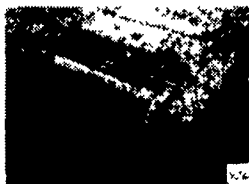
HM V3300 Spreader, 3300 Gal. Spreader, Walking Tandems, A Great Way To Handle Liquid Manure Was \$7,500 \$6,200 (V3220)



Fox 656 Blower, 56" Fan, 540 PTO, Fair Was \$1,575 \$975 (U4281)



NH 1495 12' Mower Conditioner, Self Propelled, Diesel, Cab Was \$16,900 \$14,900 (U4569)



JD 7' Cut Mower Conditioner, 540 PTO, 7' Mower Conditioner Was \$3,850 \$3,300 (U4365)



RH FL15, 15' Mower, Heavy Duty Flexwing Mower, 1000 PTO Was \$6,900 \$5,800 (U4604)

CHEAP

"No Substitute For Quality & Experience"

IRRIGATION

* Make Your Life Better *

Portable, Underground, Reels, Pivots, Trickle

PUMPS

Gorman Rupp, Hale, ITT Marlow, Berkeley Peerless, Hypro, Cat, Pacer, Fairbanks

SEWAGE * POOL * HIGH PRESSURE

Reynolds Pipe - Rainbird - Nelson Sprinklers

RACE, WOSCO, WADE, IRRECO, CHAMPION, SHUR-RANE, McDOWELL, RAINBOW, A-M AND OTHERS

"We Deal In Solutions"

EECO, INC.

4021 N. 6th St., Harrisburg, PA 17110
717-238-9423

Licensed Engineering Service Since 1944
Free - 40 Years Experience & Reliability



REEL AUGGIE

2000 SERIES MIXER/BLENDER/FEEDER



A NEW CONCEPT

You can finally mix and feed all of your ration ingredients including long stem dry hay and other tough roughages that previously could not be included in your mixed ration. Standard square bales, stacked hay and processed round bales can be added directly to the load. Veterinarians agree that longer dry hay in the ration helps activate the rumen for improved digestion. Better milk production, better weight gains, and vastly improved animal health are just some of the positive results. Now you can control the percentage of dry hay in your ration and know that each animal will get its share. Available in stationary or portable models.

You can depend on a Knight
Since 1945

Lancaster Silo Co., Inc.
2008 Horseshoe Rd.
Lancaster, PA 17601
(717) 299-3721

All New & Used Products Backed By Hooper Parts & Service
(717) 768-8231

HOOPER
C B HOOPER & SON INC
INTERCOURSE, PA

