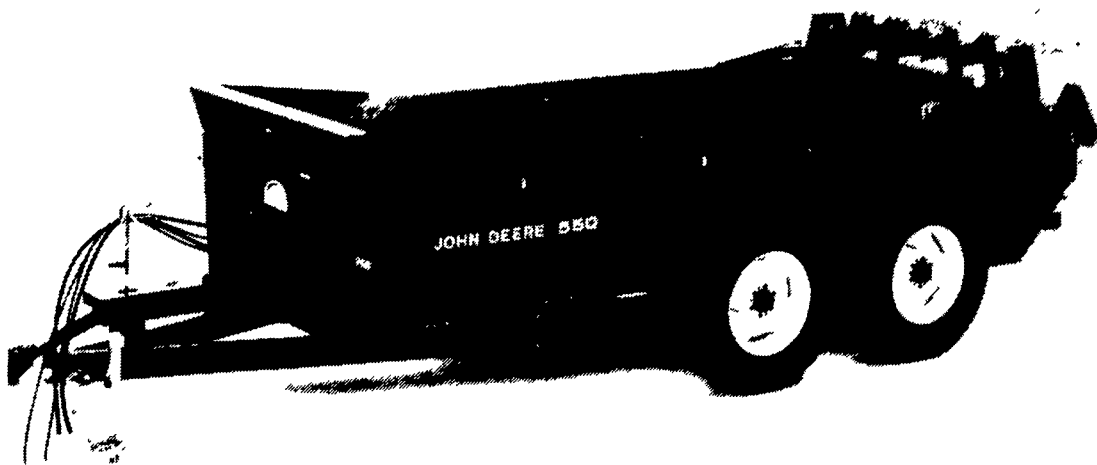


# Business News

John Deere's new 550 manure spreader provides a 172-cubic-foot, or 286-bushel, capacity and features a tandem axle that oscillates for smooth pulling over bumps and minimizes soil compaction.

## Deere Spreader Features 286 Bushel Capacity

MOLINE, IL. — John Deere's new 550 manure spreader, with 172 cubic feet, or 286 bushel, capacity, offers a number of features to increase reliability and productivity, and they're all standard.

A tandem axle oscillates for smooth pulling over bumps, furrows, or ditches. The tandem feature gives increased flotation and minimizes soil compaction with heavy loads.

An hydraulic apron drive -- adjustable from the tractor seat -- has six conveyor speeds to allow for the desired spread pattern. A V-belt primary drive powers only the main beater and optional upper beater to allow longer drive component life and eliminates the need for clutch disks, ratchets or shear pins.

A 30-1/2-inch diameter beater, with heat-treated combs and tip speed up to 2977 feet per minute, breaks material and gives a fine-

spread pattern. Combs are bolted on for easy replacement.

Maintenance is reduced by using a fiberglass-reinforced, plastic floor and special sides with a water-resistant, resin-impregnated coating. Floor and sides will clean easily and will not rust, rot, or warp.

Options include an hydraulic endgate, upper beater and endpan, diverter valve, and tire sizes to match work requirements.

## Agway Acquires Reading Bone Fertilizer

SYRACUSE, NY — We are pleased to announce that the Reading Bone Fertilizer business of Reading, Pennsylvania has

been acquired by Agway Inc. To more effectively serve your crop needs requirements in southeastern Pennsylvania, Agway will

consolidate the crop needs business in this market area under the name Reading Bone-Agway.

Reading Bone-Agway will be responsible for providing dry and liquid fertilizers, seed, lime, agricultural chemicals, and application service for these products to farmers located in Southeastern Pennsylvania. The current crop facilities owned and operated by Agway at Leesport, Blandon, Lehigh Valley, Souderton, Cochranville and New Holland, as well as our facilities in Reading and Millardsville, will all be utilized to serve your needs. Bagged fertilizer, package chemicals and seed required for in season fill-in needs will still be available at our locations or your local Agway store.

Effective immediately, you should contact Reading Bone-Agway for any liquid or dry fertilizer, lime, chemical products and or custom applications. The phone numbers for local calls are: 215/375-4454 for the Reading area, 717/866-5205 Myerstown, 717/274-0808 Lebanon. A toll-free number for use by customers outside of the local phone exchange is 800/383-2663.

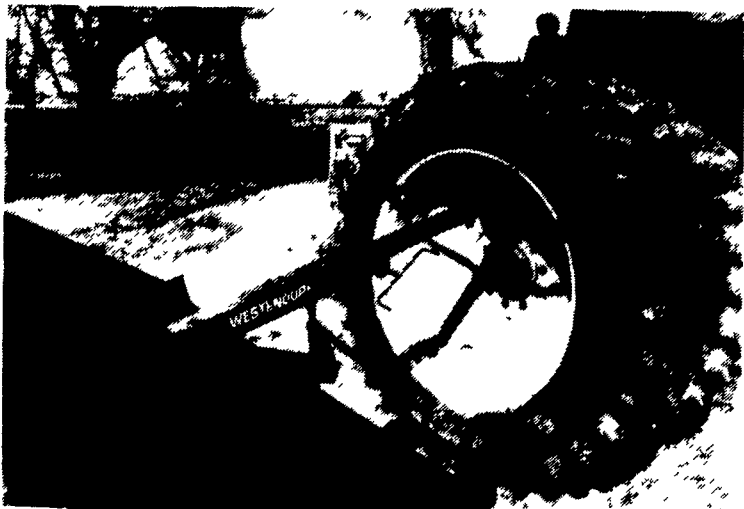
Agway members will be eligible for patronage refunds on Reading Bone-Agway purchases. If you are an Agway member, please fill out the enclosed card and mail it back so we have your correct membership information.

## Tractor Dual Changer Offered

ONAWA, IA — Attaching easily to the bucket on almost any front-end loader, Westendorf's new Dual Changer makes changing duals a one-man job. Slip the lightweight device on the front edge of your bucket, secure it with a strap hooked to the rear bucket lip, and you're ready to go. The tractor wheel is picked up and positioned with the Dual Changer, using the bucket controls. For precise alignment, the Dual Changer features 3-way adjustability-- a

bottle jack adjusts the height, a telescoping boom moves the wheel forward and back up to 16 inches, and a small wheel on the end of the boom rotates to align the holes or mounting. The Dual Changer removes the strain of changing duals, and makes it possible for one man to complete the job in as little as five minutes per tire.

Contact Westendorf Manufacturing Inc., P.O. Box 29, Onawa, Iowa 51040.



This dual changer slips on almost any front-end loader and is secured with a strap hooked to the rear bucket lip.



Starline V-plows, designed for use on belt feeders, reduces feed carry through during the switching process, thus reducing feed loss.

## Starline Belt Feeders Equipped With V-Plow

Fort Atkinson, WI — As part of a "make-it-even-better" program to improve the popular Starline Belt Feeders, Starline Dealers were recently introduced to a completely new V-Plow the company calls "STARglider". The new plow features a new belt wiper design that promotes superior belt cleaning of all types of feed. The new plow base/platform design features a Tuff-Glide polyethylene surface that reduces friction and promotes more thorough cleaning of the plow wiper. The new V design reduces feed carry-through during the switching process, thus reducing feed loss.

the popularity of this Starline Belt Feeder is its unique suspension design based on exclusive, patented Cannon Ball track and trolley. This system allows smoother, drag-free plow travel with less maintenance and more dependability.

The new V-Plow comes with an optional diverter control for automatic switching and an optional solenoid control for side-to-side switching.

For further information about the new STARglider V-Plow and Starline Belt Feeders and Conveyors, contact Dean Hanke, Sales Development Manager, J-STAR Industries, Inc., 801 Janesville Avenue, Fort Atkinson, Wisc. 53538, 414/563-5521.

One of the principle reasons for

## Leasing Offers Farmers Years-End Tax Advantages

BETHEL (Berks Co.) — For farmers seeking to maximize their 1989 tax deductions and get the new or used equipment they need, leasing may be the perfect solution.

"A farmer's entire lease payment is usually a 100 percent tax deductible operating expense for 1989," says Harvey Zimmerman, owner, Zimmerman Farm Service of Bethel, Berks County. No matter when a farmer arranges for the lease, payments can be deducted for the entire year.

The advantage, says Zimmerman, is that it's not too late for people in farming and other agribusiness enterprises to put themselves in a favorable tax situation and acquire the assets they need to help their businesses grow and prosper.

A farmer who leases a \$60,000 tractor on a three-year lease and makes his first annual payment of approximately \$22,400 before

December 31, 1989 (whether the tractor is received or not) will be able to totally deduct the payment. However, a farmer who buys a \$60,000 tractor in December may only be able to depreciate it about 2.7 percent (or \$1,620). And, if the tractor is not received until 1990, no deduction is available on it for the 1989 tax year.

Farming in 1989 was good and the outlook for the future is bright. Many farm operators are thinking about replacing old, worn equipment. "Leasing offers farmers the opportunity to acquire assets when technological and economic changes make it necessary and appropriate for operating reasons," says Zimmerman.

"Leasing is an expanding alternative to the purchase of equipment because it doesn't tie up working capital," Zimmerman adds. "And, leasing doesn't deplete savings or drain credit lines."

## USDA Issues Tip Sheets On Food Transportation

WASHINGTON, D.C. — The U.S. Department of Agriculture has issued three new "tip sheets" on guidelines for preventing contamination of food transported in trucks.

One of the tip sheets addresses sanitation of transport vehicles hauling food, another addresses construction materials and cleaning compounds for food-transporting vehicles, and the third looks at regulations governing the joint use of vehicles transporting food and hazardous materials.

Martin F. Fitzpatrick, Jr., administrator of USDA's Office of Transportation, said the tip sheets address regulations of USDA's Food Safety and Inspection Ser-

vice, the U.S. Department of Transportation, the Food and Drug Administration and the Environmental Protection Agency.

"All of these agencies, as well as some governments, have certain responsibilities for enforcing regulations designed to prevent contamination of food during transportation," Fitzpatrick said. "The tip sheets also outline industry practices aimed at preventing contamination."

Fitzpatrick said the tip sheets are being distributed to food processing and distribution associations, to transportation organizations, and to other groups and organizations involved with the transport of food.