

# PSU's Curtis Wins National Award

UNIVERSITY PARK (Centre Co.) — Dr. Samuel M. Curtis, Penn State professor of agricultural education, is the 1989 recipient of the Distinguished Service Award, the most prestigious award given by the American Association of Teacher Educators in Agriculture.

A national award presented annually, the Distinguished Service Award recognizes superior contribution to the field of teacher education in agriculture, excellence in teaching undergraduate and graduate students, significant research in agricultural education, scholarly writing and service to agricultural education and vocational education.

His research accomplishments include identifying, counseling and teaching special needs students. After identifying competencies required to teach disadvantaged students, Curtis worked with faculty in the department of special education to originate and develop the course Vocational Education for Special Needs Students.

Since joining the Penn State faculty in 1966, Curtis also has taught in-service education courses for teachers of agriculture in farm management, undergraduate courses in teaching methods and graduate courses in research

design, data analysis, foundations of vocational education, history of agricultural education and program development.

Curtis has helped numerous students who now hold prestigious positions in colleges, research groups and businesses. He has advised 35 master's and 17 doctoral students during his tenure at Penn State. "I've enjoyed all aspects of my career," he says. "But teaching is what I've enjoyed most of all."

After becoming head of the department of agricultural and extension education in 1980, Curtis has continued to teach at least one course a year. As department head, he has helped make the 27-faculty department into one of the best in the country. "I've made a career out of helping our faculty grow and succeed. One of the things that makes this award so satisfying is that it affirms that our department is among the leading ones in the country — this only happens when you have good faculty."

Curtis will resign as department head next June to devote more time to teaching and research.

Curtis is the second Penn State professor to receive the Distinguished Service Award in the association's 28-year history.

# Sale Reports

**LOCKCUFF ESTATE SALE**  
A Public Auction of antiques and collectibles was held December 16 for the estate of Margaret Lockcuff, 5 miles north of Linden, Lycoming Co., Pa. off Queneshockne Road.

Some prices included: bucket bench \$200, cook stove \$190, 1964 Chevrolet Biscayne 4-door car \$1525, round oak table \$660, 6 chairs \$70 each and chest of drawers \$500.

Fralely Auction Co. conducted the sale.

**ALDERFER AUCTION**  
A Holiday Auction of art and antiques was held December 14 at the Alderfer Auction Co., 501 Fairgrounds Road, Hatfield, Pa.

The following oil paintings on canvas

were sold: Ben Austrain (quails) \$8300, Fern I. Coppedge artwork \$12,000, Walter Elmer Schofield artwork \$7200, Ernest Albert artwork \$7000, Daniel Garber artwork \$6000, toy wooden riding horse with original paint from early 20th century \$1750, John Hagey tall case 8-day clock \$5700 and Chippendale chair \$2000 (needed some repairs).

Alderfer Auction Company conducted the sale.

**THOMPSON & GALLO SALE**

A Public Auction of furniture and antiques was held December 12 for Robert and Carola Thompson and Michael J. Gallo and others at the Gap Fire Hall, Pequea Ave., Gap, Pa. There were about 100

registered bidders present.

Some items sold were: oak sideboard \$475, dining room suite \$400, 2 bedroom suites \$300 each, chest of drawers \$225, small footstool \$65, mantel clock \$105 and oak commode \$60.

Barr/Davis were the auctioneers.

**YOUNKER SALE**

A Public Auction of farm equipment was held December 15 by David G. Younker, 1 mile north of Bethel, Pa. along Route 501.

Some prices were: I.H. 856 tractor \$7400, J.D. 4020 tractor & wheel \$5550, Farmall 450 tractor \$2250, silage wagon \$3800, chisel plow \$1725, disc \$2100 and 1150 Heston \$4250.

Horning Farm Agency, Inc. conducted the sale.



# STIHL®

Because A Tie  
At Christmas  
Doesn't  
Cut It.

009 - **\$199<sup>95</sup>**  
2.08 HP / 9.0 lbs.  
14" bar & chain

011T - **\$229<sup>95</sup>**  
2.08 HP / 9.5 lbs.  
14" bar & chain

## Gift Ideas

Helmet Systems  
Protective Clothing  
Saw Carrying Cases

Available at Participating Dealers

**Bechtelsville**  
PASSMORE SERVICE  
CENTER, INC.  
RD 1, Rt. 100  
215-367-9084

**Elm**  
BOMBERGER'S STORE, INC.  
658 W. Newport Rd.  
717-665-2407

**East Earl**  
GOODS LAWN & GARDEN  
CENTER  
Route 23  
717-354-4026 Ext. 34

**Ephrata, Hershey, Lancaster**  
HOLLINGER'S LAWN &  
GARDEN EQUIP.  
Ephrata, PA 717-738-1131  
Hershey, PA 717-533-4060  
Lancaster, PA 717-656-2710

**Ephrata**  
WES STAUFFER  
ENGINES & EQUIPMENT  
23 Pleasant Valley Rd.  
717-738-4215

**STIHL®**  
NUMBER ONE WORLDWIDE

**Gap**  
GAP POWER EQUIPMENT  
Corner of Rt. 30 & Rt. 897  
717-442-8970

**Hamburg**  
SHARTLESVILLE  
FARM SERVICE  
RD 1, Box 1392  
215-488-1025

**Jonestown**  
BLUE MOUNTAIN  
ENTERPRISES, INC.  
Rt. 72 South  
717-865-2994

**Lebanon**  
THE FARM WORKSHOP  
1611 Fonderwhite Rd.  
717-273-9540

**Myerstown**  
EBLING LAWN &  
GARDEN SERVICE  
888 E. Lincoln Ave.  
717-866-6720

**Ono**  
SHUEY'S SALES & SERVICE  
Jonestown Rd.  
717-866-4915

**Oxford**  
OXFORD GREENLINE, INC.  
1100 Limestone Rd.  
215-932-2573

**Peach Bottom**  
WAKEFIELD SAW SHOP  
742 Nottingham Rd

**Ronks**  
A & B SALES & SERVICE  
2 Miles South of Rt. 23 Along 772  
Thru Monterey - RD 1

**Somerset, PA  
McCoolle, MD**  
LINCOLN SUPPLY &  
EQUIPMENT CO.  
Somerset, PA 814-443-1691  
McCoolle, MD 301-786-6600

**Watsontown**  
BEILER'S REPAIR  
1 Mi. W. of Turbotville  
On Rt. 44  
RD 2, Box 54

**West Chester**  
M.S. YEARSLEY & SONS  
110-120 E. Market St.  
215-696-2990

Distributed By Keystone Stihl

## POURED REINFORCED CONCRETE CONSTRUCTION

MANURE STORAGE STRUCTURES - **DEPEND ON US FOR TOP QUALITY**

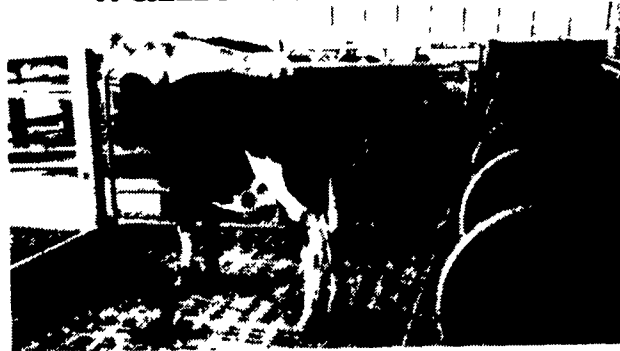
- Steel In Circular Manure Pits Grade 60



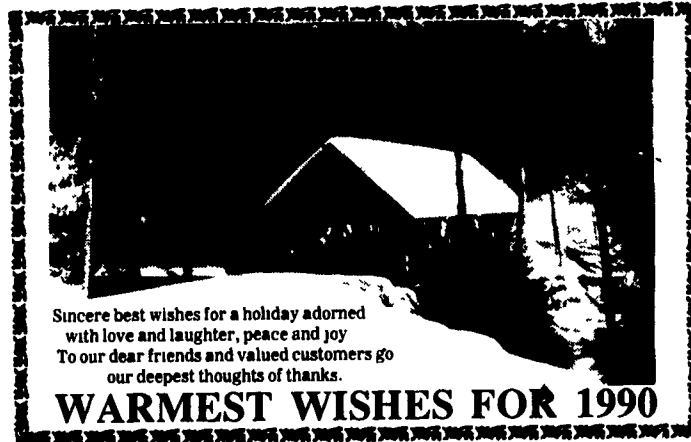
**ABOVE-GROUND CONCRETE MANURE TANK**

We Will Build A Manure Storage Tank To Fit Your Needs!

### Waffle Cattle Slats



Ideal For Heifer, Cattle And Freestall Barns. Absolute Comfort For All Animal Sizes.



Sincere best wishes for a holiday adorned with love and laughter, peace and joy To our dear friends and valued customers go our deepest thoughts of thanks.

**WARMEST WISHES FOR 1990**

SIZES AND LAYOUTS TO YOUR SPECIFICATIONS

**Groffdale**  
concrete walls, inc.  
148 BRICK CHURCH RD., LEOLA, PA 17540  
(717) 656-2016