

# GRAIN, CATTLE AND HOG FUTURES MARKETS

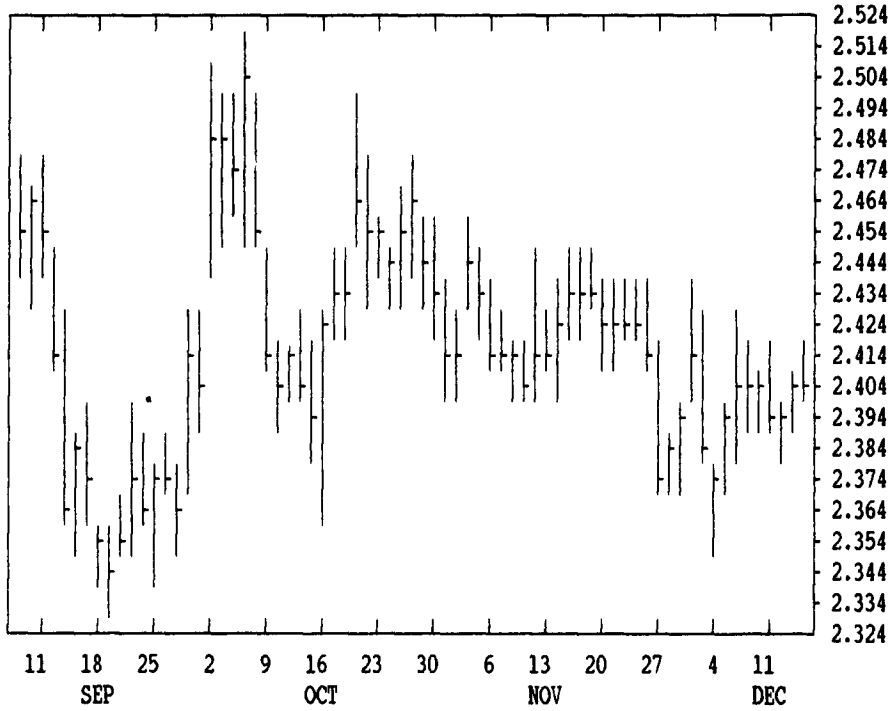
From DTN farmer satellite daily update. Service phone: (717) 691-7609.

Closing bids: Thursday, December 14)

LIVE CATTLE				FEEDER CATTLE				LIVE HOGS			
	HIGH	LOW	LAST CHG		HIGH	LOW	LAST CHG		HIGH	LOW	LAST CHG
DEC	7742	7705	7740* +60	JAN	8390	8345	8372* +30	DEC	5285	5225	5275* +105
FEB	7595	7545	7582* +42	MAR	8235	8190	8225* +43	FEB	4965	4895	4910* +25
APR	7480	7445	7462* +27	APR	8170	8120	8147* +37	APR	4555	4505	4507* +2
JUN	7172	7150	7162* +22	MAY	8085	8035	8055* +28	JUN	4880	4840	4845* +5
AUG	7045	7025	7027* +15	AUG	8010	7965	8010* +43	JULY	4885	4840	4852* +22
OCT	7057	7032	7045* +20	SEP	7965	7950	7965* +23	AUG	4775	4740	4757* +10

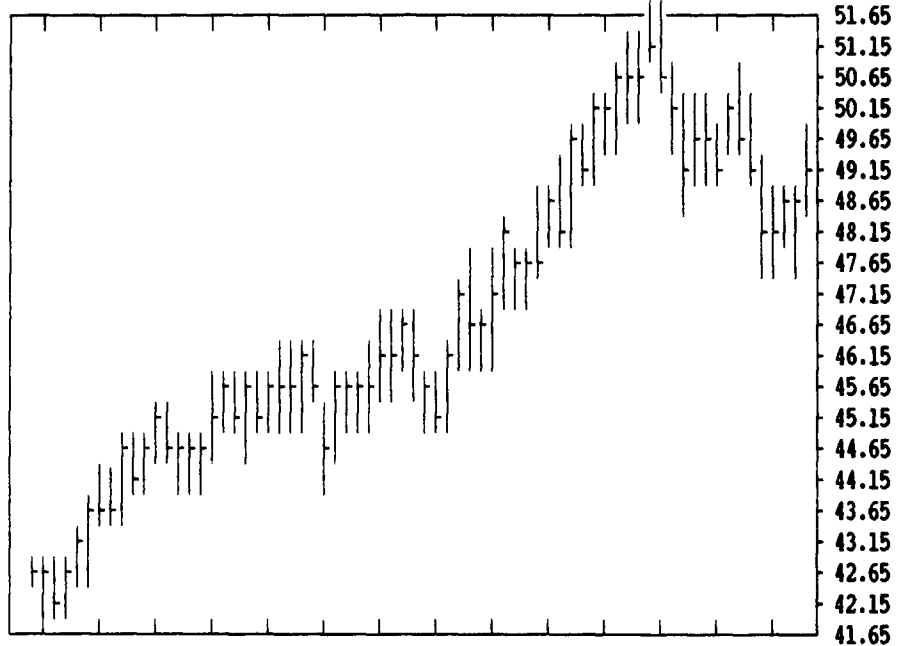
DTN GRAINS 16 MARCH CORN

CONTRACT HIGH: 2.864 LOW: 2.260



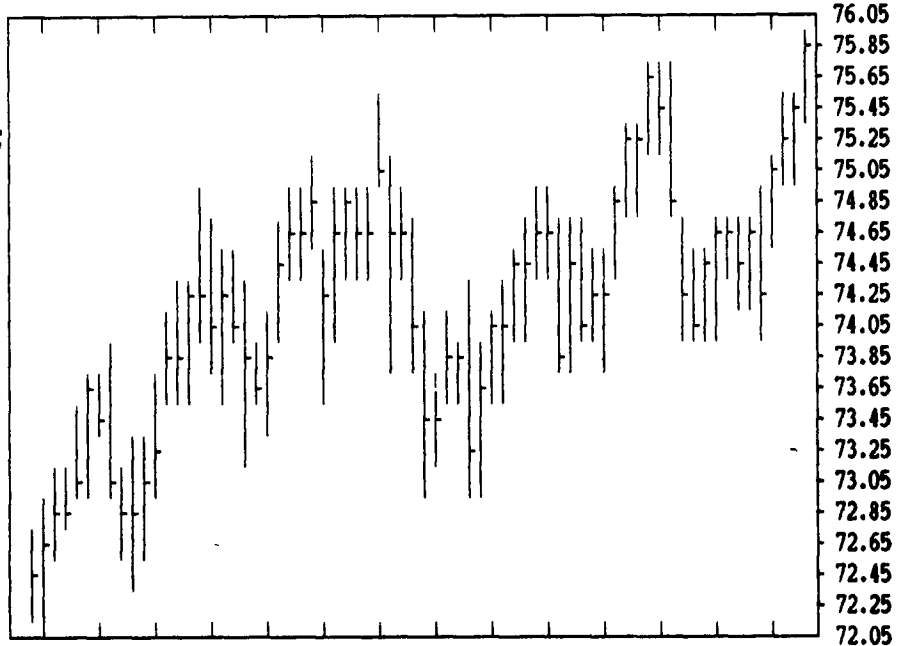
DTN LIVESTOCK 17 FEB HOGS

CONTRACT HIGH: 51.87 LOW: 41.75



DTN LIVESTOCK 18 FEB CATTLE

CONTRACT HIGH: 75.95 LOW: 69.80



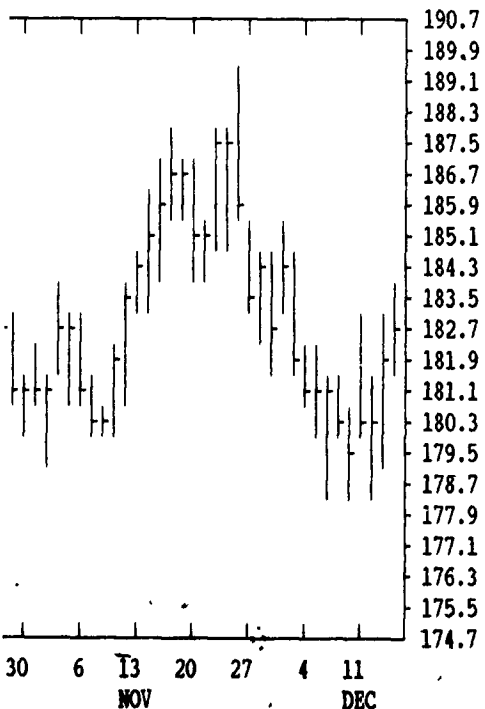
DTN FUTURES 10 12/14 TECHNICAL COMMENTS

	CLOSE	MOVING AVERAGES			PAST WEEK'S (ENDING 12/08)			CURRENT		
		4-DAY	9-DAY	18-DAY	HIGH	LOW	CLOSE	SUPPORT	RESISTANCE	
MAR WHEAT	4.16 1/4	4.14 3/8	4.10 1/4	4.10	DEC WHT	4.10 1/2	4.02 1/4	4.10 1/4	4.02 MAR	4.15
JLY WHEAT	3.62 3/4	3.60 3/8	3.57 1/2	3.59 5/8	JLY WHT	3.59	3.52	3.56 3/4	3.47	3.60-65
KC MAR WHT	4.11 1/4	4.10 1/8	4.08 1/4	4.07 3/8	KC DEC	4.15 1/2	4.07 1/2	4.14 1/2	4.00 MAR	4.15
KC JLY WHT	3.71 1/4	3.69	3.67 1/4	3.70	KC JLY	3.70	3.63 1/2	3.65 1/2	3.44 1/2	3.75
MAR CORN	2.41	2.40 3/8	2.40 1/8	2.40 3/8	DEC CORN	2.37 1/2	2.31 3/4	2.36 1/4	.	.
JLY CORN	2.49 1/4	2.48 5/8	2.47 7/8	2.48	MAR CORN	2.43	2.35 1/2	2.40 3/4	2.33 1/2	2.44
DEC90 CRN	2.45	2.44 1/8	2.42 3/4	2.41	DEC90 CN	2.44	2.37 1/2	2.41 1/4	2.35	2.46 1/2
JAN BNS	5.82 1/4	5.79 5/8	5.77 3/4	5.80 1/8	JAN BNS	5.80 1/2	5.71 1/4	5.79	5.70	6.00
MAR BNS	5.96 1/2	5.93 3/8	5.91 1/8	5.93 1/4	MAR BNS	5.93 1/2	5.84 1/2	5.92	5.80	6.10
NOV90 BNS	6.23 1/2	6.17 3/8	6.13 1/8	6.10 3/8	NOV90 BN	6.15 1/2	6.03 1/4	6.10 3/4	6.00	6.20
JAN MEAL	182.90	181.65	181.17	182.91	DEC MEAL	181.40	178.50	179.70	175.50	JAN 185.00
JAN OIL	19.26	19.15	19.06	19.17	DEC OIL	19.08	18.50	19.03	18.50	JAN 19.70
FEB CCTL	75.82	75.40	74.95	74.88	DEC CCTL	75.85	74.80	75.55	.	.
APR CCTL	74.62	74.42	74.31	74.33	FEB CCTL	74.90	74.07	74.20	74.00	75.75
JAN PDRS	83.72	83.42	83.12	83.03	JAN PDRS	83.10	82.65	82.77	82.00	84.10
FEB HOGS	49.10	48.77	49.10	49.72	DEC HOGS	51.87	49.97	50.82	.	.
APR HOGS	45.07	44.88	45.16	45.64	FEB HOGS	50.70	47.95	48.12	47.00	50.70
FEB BELS	50.32	50.76	53.06	57.51	FEB BLS	57.45	52.45	52.45	46.00	54.40

SOYBEANS			SOYBEAN MEAL			SOYBEAN OIL					
JAN	5850	5812	5822* +16	DEC	1835	1822	1831* +5	DEC	1913	1902	1909* +6
MAR	5990	5952	5964* +20	JAN	1840	1821	1829* +5	JAN	1929	1913	1926* +9
MAY	6114	6082	6086* +20	MAR	1847	1833	1837* +2	MAR	1973	1957	1970* +9
JLY	6214	6180	6190* +24	MAY	1852	1840	1841* +1	MAY	2011	1995	2010* +12
AUG	6240	6204	6210* +22	JLY	1862	1850	1852* +5	JLY	2035	2018	2031* +11
SEP	6220	6190	6196* +34	AUG	1870	1860	1861* +6	AUG	2030	2024	2027* +10
NOV	6260	6214	6234* +36	SEP	1880	1865	1867* +2	SEP	2030	2024	2027* +10
JAN	6354	6324	6334* +24	OCT	1885	1865	1867* +2	OCT	2033	2025	2032* +13

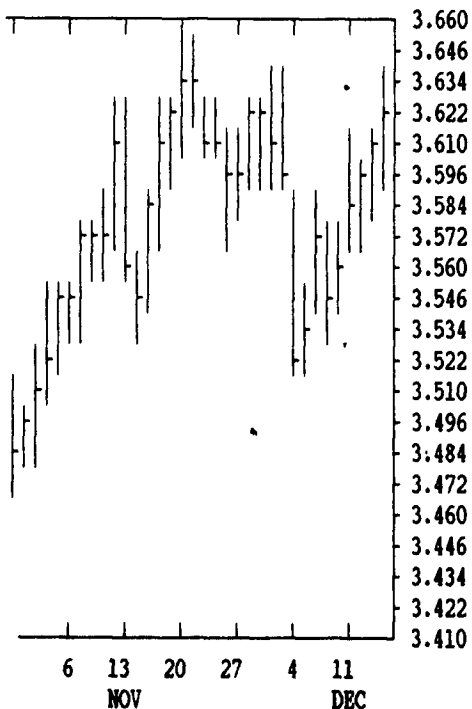
DTN GRAINS 23 JAN SOYMEAL

CONTRACT HIGH: 230.0 LOW: 175.5



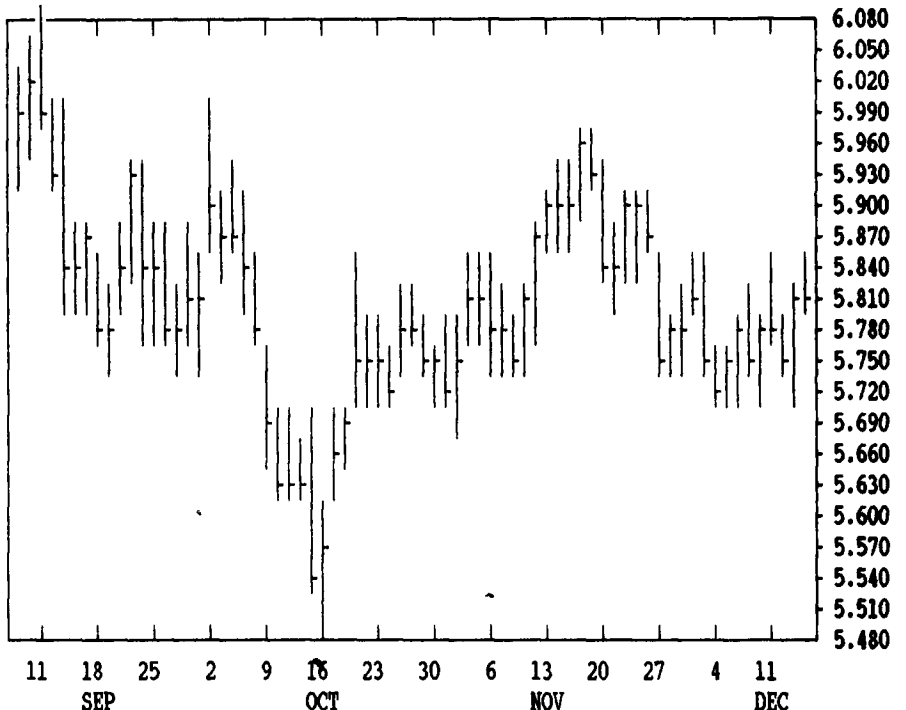
DTN GRAINS 18 JULY WHEAT

CONTRACT HIGH: 3.850 LOW: 3.422



DTN GRAINS 21 JAN SOYBEANS

CONTRACT HIGH: 7.670 LOW: 5.510



CORN				CHICAGO WHEAT				K.C. WHEAT			
	HIGH	LOW	LAST CHG		HIGH	LOW	LAST CHG		HIGH	LOW	LAST CHG
DEC	2354	2336	2352* +20	DEC	4170	4150	4162* +16	DEC	4190	4170	4180* +10
MAR	2420	2404	2410* 0	MAR	4164	4144	4162* +14	MAR	4116	4100	4112* +10
MAY	2472	2454	2456* -4	MAY	3934	3910	3926* +10	MAY	3930	3910	3926* +10
JLY	2510	2490	2492* -4	JLY	3632	3602	3626* +20	JLY	3720	3686	3712* +14
SEP	2482	2460	2460* 0	SEP	3680	3660	3674* +20	SEP	3770	3750	3760* +14
DEC	2470	2446	2450* 0	K.C. SORGHUM				MINN WHEAT			
MAR	2534	2516	2520* 0	DEC	2140	2140	2140* +14	DEC	3954	390	390-3560
				MAR	2180	2180	2180* +4	MAR	4000	3984	3992* +12
				MAY	2240	2194	2224* +4	MAY	3994	3980	3982* -2
				JLY	2310	2224	2260* +4	JLY	3844	3832	3836* +2
				SEP				SEP	3770	3754	3770* +10