



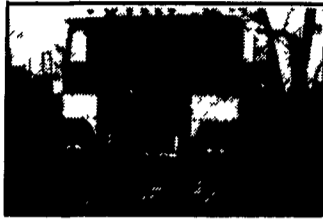
1979 GMC Astro

Detroit 8V92 Engine, RTO 14613 Transmission, 12,000# Front Axle, 38,000# Rear Axle, Reyco Spring Suspension, P/S, A/C, Engine Brake, AM/FM Radio, Excellent Tires
\$6,000.00



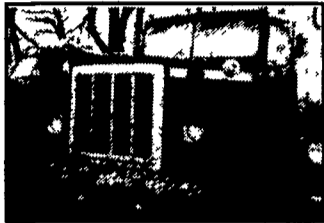
1975 Freightliner

NTC 350 Engine, RTO 12510 Transmission, 12,000# Front Axle, 38,000# Rear Axle, Spring Suspension, Sliding 5th Wheel, 86" Bunk, Air Assist Power Steering, A/C
\$4,900



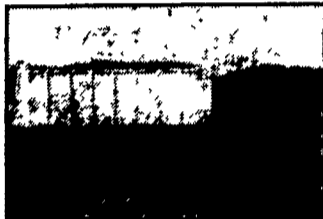
1977 Freightliner

290 Cummins Engine, RT9509 Transmission, FF931 Front Axle, SQHD Rear Axle, Spring Suspension, A/C, AM/FM Radio
\$5,900.00



1979 International

Detroit V6 92TA Engine, 350 HP, New Installed In '85, Fuller 9 Speed Trans., 10,860# Front Axle, 19,000# Rear Axle, Hendrickson Suspension, Bendix Air Dryer, P/S, A/C, AM Radio
\$6,900



1973 Diamond Reo

NTC 270 Engine, RTO9513 Transmission, FH901 Front Axle, SSHD Rear Axle, Hendrickson Suspension, Excellent Tires, Air Assist Power Steering, Engine Brake, 18Ft. Aluminum Body With Page Lift Axle
\$10,900.00

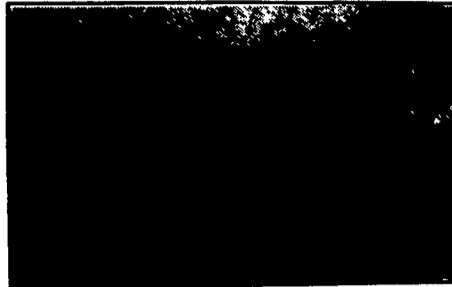
BIG RIG, INC.

SALES & SERVICE
889 E. Main St., P.O. Box 584
Ephrata, PA 17522

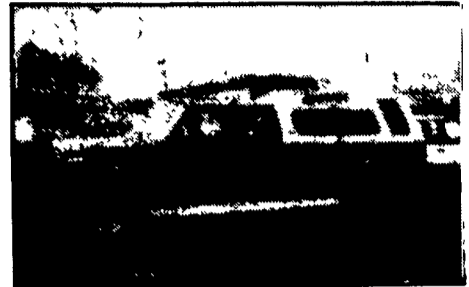
717-738-2444
1-800-732-0019

Ebersole

4 WHEEL DRIVE HEADQUARTERS



1984 GMC S15 SIERRA CLASSIC EXT. CAB 4x4
Silver w/Charcoal Interior, Full Bed Liner, 6 Cyl., 5 Speed, AM/FM Cassette
\$7,995



1986 FORD F250 XLT LARIAT CLUB CAB 4x4
Bright Red With Red Interior And White Cap, 8 Cyl., Auto., Air, Tilt, Cruise, FM Cassette, P/Wind. Real Sharp.
Special Price \$12,995

1985 JEEP CHEROKEE WAGON 4x4
Red With Tan Interior, 4 Cyl., 4 Speed, Very Clean
\$7,995

1985 NISSAN KING CAB 4x4
Dk. Brown With Tan Interior And A Wht. Cap, 4 Cyl., 5 Spd.,
\$6,995

1980 JEEP J10 PICKUP 4x4
Two Tone Blue and Blue Interior, 8 Cyl., 3 Speed
\$2,995

MANY OTHER NEW AND USED TRUCKS TO CHOOSE FROM!

On The Spot Financing

Ebersole

Showroom Hours:
Daily 8:30 - 9 PM
Sat. 8:30 - 4 PM

PONTIAC - OLDSMOBILE - GMC TRUCK

1900 Cumberland Street (Rt. 442), Lebanon, PA (717) 273-7611

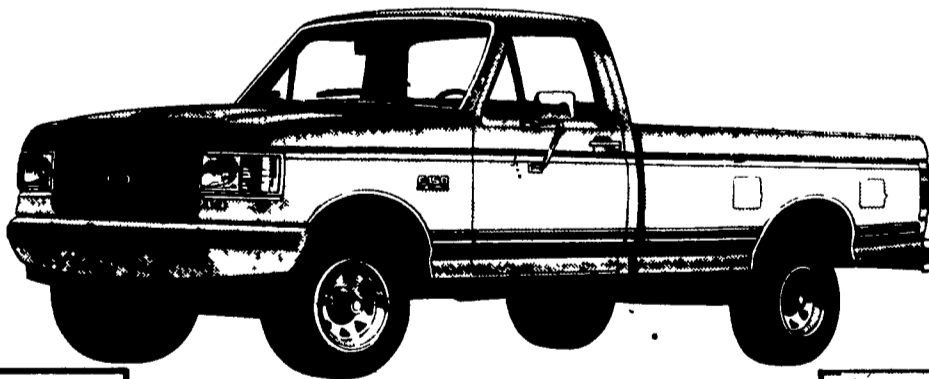
Mark VII - Pickups - Broncos - Bronco II - Stake Body - Crew Cab -

For All Your Farming Transportation Needs Through The F800 Series

BRONCOS DIESEL PICKUPS CHASSIS CAB CARGO VANS 4x4 RANGERS PICKUPS
BRONCO II SUPER CAB CREW CAB STAKE BODY BOX VANS XLT CUSTOM VANS

ONE-TIME OFFER FROM SHEEHY!

12 1/2 TO 30 TO CHOOSE FROM! PICK YOUR COLOR!



SAVE! SAVE! SAVE! LIMITED TIME ONLY!

FORD F-150 4x4

Equipped With Air Conditioning, Limited-Slip, Power Windows, Power Door Locks and MANY MORE EXTRAS!!!

\$13,999

ONE PRICE -



'87 AVIATOR CONVERSION VAN

V8, Auto, PS, PB, AC, PW, PDL, Tilt, AM/FM Cass., Cruise, 35,000 MI.
\$13,899



Southern Coach Conversion, V8, Auto., PS, PB, AC, PW, AM/FM, Tilt, Cruise, Only 17,000 MI.
\$16,899
3 Full Size Broncos To Choose From!

Unless This Emblem Is On Your Car Or Truck You Probably Paid Too Much

SHEEHY LEBANON

9-9 Daily
9-5 Sat.
717-272-7671

Parts Dept. Open
Daily 8-5
Sat. 8-12
717-273-8168

SHEEHY FORD LINCOLN MERCURY INC.

20th & Cumberland St., Lebanon



Tempo - Cougar - Continental - Town Car - 4x4 - Box Van - Rangers -

Custom Vans

XLT

Grand Marquis

Marquis

LYNX

Topaz

Diesel Pickups

Mustang

T Bird