

National Grain Market

St. Joseph, Mo.

Wednesday, December 6, 1989

GRAIN PRICES HIGHER ON WEDNESDAY. WHEAT PRICES HIGHER, INFLUENCED BY U.S.D.A.'S AUTHORIZATION FOR CHINA TO PURCHASE AN ADDITIONAL 1 MILLION METRIC TONS OF U.S. SUBSIDIZED WHEAT UNDER EXPORT ENHANCEMENT PROGRAM. CHINA WAS THE LARGEST FOREIGN BUYER OF U.S. WHEAT IN 1988-89 WHEAT MARKETING YEAR THAT ENDED MAY 31 WITH ORDERS FOR NEARLY 8.1 MILLION TONS CORN ALSO ENJOYED GOOD EXPORT DEMAND. SOYBEAN PRICES RODE THE SHIRTTAIL OF WHEAT STRENGTH.

EXPORT NEWS: IRAQ BOUGHT 110,000 TONNES OF HARD RED WINTER WHEAT FOR DEC/JAN SHIPMENT. SOUTH KOREA'S NATIONAL LIVESTOCK COOPERATIVE FEDERATION BOUGHT 100,000 TONNES U.S. NO. 3 YELLOW CORN FOR DEC/FEB SHIPMENT.

DATE CHANGE YEAR AGO 12/06/89 12/05/89 12/07/88 WHEAT: KANSAS CITY 4.25-4.29 UP 3-4 4.10-4.12 MINNEAPOLIS 4.16 1/2-4.19 1/2 UP 4 4.23 1/4 PORTLAND 4.61-4.62 UP 3-2 4.72-4.74 ST. LOUIS 4.19-4.23 UP 2-3 4.23-4.27.

CORN, U.S. NO. 2 YELLOW: KANSAS CITY 2.43-2.46 UP 2.56-2.61 MINNEAPOLIS 2.21 UP 3 3/4 2.44 1/4 SO. IOWA 2.31-2.40 NC-UP 8 2.56-2.59 OMAHA 2.29-2.30 UP 2 2.44.

SOYBEANS, NO. 1 YELLOW: KANSAS CITY 5.73-5.77 UP 5-4 7.59-7.64 MINNEAPOLIS 5.58 1/2 UP 4 3/4 7.48 SO. IOWA 5.67-5.73 UP 2-3 7.51-7.58 C. ILL. PROCESSORS 5.81 1/2-5.86 1/2 UP 7 1/2-4 1/2 7.68-7.73.

KANSAS CITY, US NO. 1 HARD RED WINTER WHEAT, ORDINARY PROTEIN. MINNEAPOLIS, US NO. 1 DARK NORTHERN SPRING WHEAT, 14% PROTEIN. PORTLAND, NO. 2 SOFT WHITE WHEAT, ST. LOUIS, NO. 2 SOFT RED WINTER WHEAT.

FUTURES CLOSE: KANSAS CITY (MAR) WHEAT 4.09 UP 3 3/4 4.17 MINNEAPOLIS (MAR) WHEAT 3.97 UP 2 4 03 1/2 CHICAGO (MAR) WHEAT 4.09 1/4 UP 4 1/2 4.23 3/4 (MAR) CORN 2.41 UP 1 3/4 2.68 1/4 (JAN) SOYBEANS 5.79 1/4 UP 4 1/4 7.81.

EXPORT: BARGE OR RAIL, PORT OF NEW ORLEANS OR NORTH TEXAS GULF. NO. 1 HARD RED WINTER WHEAT ORDINARY PROTEIN 4.56-4.57 UP 4 4.45-4.47 NO. 2 SOFT RED WINTER WHEAT 4.47 UP 6-NC 4.50-4.53 NO. 2 YELLOW CORN 2.73-2.74 UP 3 2.85-2.87 NO.2 YELLOW SORGHUM RAIL 4.63 UP 4 BARGE 4.68 UP 7 4.75-4.80 NO.2 YELLOW SOYBEANS 6.17-6.18 UP 7-5 7.86-7.90.

Keister's Hay

Middleburg, PA

Tuesday, Dec. 5.

Report supplied by auction
39 LOADS OF HAY.
ALFALFA: 120.00-175.00.
MIXED HAY: 70.00-175.00.
STRAW: 5 LOADS, 75.00-102.50.
EAR CORN: 1 LOAD, 75.00.
WOOD: 15 LOADS, 22.50-105.00 LOAD.

Leinbach's Hay

Shippensburg, PA

Dec. 2 and 5

Report Supplied by Auction
TOTAL LOADS: 77.
ALFALFA: 85.00-190.00.
MIXED HAY: 70.00-157.00.
TIMOTHY: 75.00-102.00.
EAR CORN: 69.00.
BROME GRASS: 83.00-107.00.
ORCHARD GRASS: 66.00-103.00.
STRAW: 40.00-112.00.
MULCH: 38.00-65.00.
WOOD: 24.00-41.00 PICK-UP LOAD.

Westminster Hay

Westminster, Md.

Tuesday, Dec. 5, 1989

Report Supplied by Auction
TOTAL LOADS: 42.
ALFALFA: 85.00, 3.70-4.20 BALE.
ALFALFA MIX: 102.00-105.00, 1.40 BALE.
TIMOTHY: 100.00, 1.40-2.20 BALE.
TIMOTHY MIX: 69.00-90.00, 1.30-1.65 BALE.
GRASS HAY: 80.00-103.00, 75 CENTS-1.75 BALE.
MULCH HAY: 70 CENTS BALE.
OATS: 1.60 BU.
STRAW: 110.00, 1.15-2.00 BALE.
WOOD: 41.00-69.00 CORD.

Belleville Hay

Wednesday, December 6

Belleville, PA

Report Supplied by Auction
TOTAL LOADS: 66 LBS. HAY.
ALFALFA: 117.50-180.00.
MIXED HAY: 75.00-155.00.
STRAW: 62.50-92.50.

Frederick Co. Hay

Buckeystown, Md.

Thursday, December 7, 1989

Report Supplied by Auction
46 LOADS. MARKET STEADY TO A LITTLE WEAK TODAY.
ALFALFA: 2 LOADS FAIR, 130.00-132.00, 1 DARK, 72.00.
ALFALFA MIX: 3 LOADS FAIR, 105.00-120.00, 4 DARK, 50.00-87.00.
TIMOTHY: 11 LOADS FAIR TO GOOD, 100.00-145.00, 3 DARK, 52.00-95.00.
ORCHARD GRASS: 3 LOADS FAIR TO GOOD, 75.00-90.00.
MIXED HAY: 2 LOADS GOOD, 95.00-120.00, 5 DARK OR DAMAGED, 45.00-65.00.
STRAW: 2 LOADS BRIGHT, 120.00-121.00, 4 DARK, 80.00-105.00.
FIREWOOD: 6 LOADS GOOD OAK, 81.00-85.00 CORD.
CHRISTMAS PARTY DEC. 21, 10.30 A.M..



Middle Atlantic Milk Marketing Assoc

NOTICE

NO SALE MONDAY, DECEMBER 25 AT NEW HOLLAND SALES STABLES, INC. NEW HOLLAND, PA.

The Following Sales Will Be Held

Tuesday, Dec. 26

Hog Sale- 8:00 A.M.

Hay Sale- 11:00 A.M.

Abe Diffenbach, Auct. 225L

CRIPPLED AND DISABLED COWS, STEERS & BULLS

Slaughter Under USDA Inspection

FREE CALL

1-800-234-COWS (2697)

215-286-9400

Wayne Taylor

Lebanon, Berks, Lancaster & Chester Counties

FOR SALE Wood Shavings & Sawdust

- * Delivered To Your Farm
- * Excellent Dairy Bedding
- * Economical
- * Year Around Supply

Call For Price

J.D. Martin Inc.

Lancaster, PA

717-898-5290

HERE TO STAY! NEW HOLLAND SALES STABLES, INC. THE ACTION AUCTION

MONDAY

SLAUGHTER HOGS



EARLY BIRD HOG SALE

7:30 AM

For Your Protection Your Hogs Must Be Identified

10:00 AM

HORSES MULES



11:00 AM

HAY STRAW GRAIN



1:30 PM

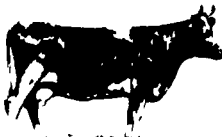
BEEF SALE CALF, SHEEP, GOATS



WEDNESDAY

11:00 A.M.

DAIRY COWS



HEIFERS, BULLS

NEW HOLLAND SALES STABLES, Inc.

12 Miles East of Lancaster on Route 23, New Holland, Penna.

717-354-4341

Mgr. - Abe Diffenbach - 717-393-4464
Norman Kolb - 717-397-5538

Field Representatives

Alan Diffenbach 717-354-3297

Luke Eberly 215-267-6608 - 738-1865

WEDNESDAY - 1:30 P.M. FEEDER PIG SALE



WEDNESDAY, DEC. 13

Sold After Feeder Pigs

35 Bred Gilts due to farrow in Jan. All 2nd and 3rd litters. York-Hampshire Cross bred to Reg. Hamp Boar. Good breeding stock originating from the Arnolds in Lebanon. Validated, Certified, Brucellosis free herd Mass. #B0744489. Tested pseudorabies free. Also 3 Registered Hamp Boars, ready for service from same bloodline. Consigned by Wildwood Farm.

THURSDAY

10:00 AM

BULLS -

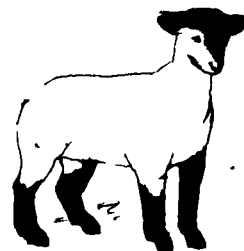


STEERS - BEEF COWS



1:30 P.M.

CALVES



SHEEP GOATS

We endeavor to keep our barns cleaner than yours. State graded until 12 Noon

Market your livestock thru New Holland Sales, your neighbor does
Pick-up your check before you leave