

Nearly \$1 Million Raised On Type 41 Tobacco At Auction

BY PAT PURCELL
LANCASTER (Lancaster Co.) — Lancaster County tobacco farmers and Paradise Tobacco Sales made history twice this week, and obtained an additional nearly \$1 million for local tobacco growers on top of their on-farm prices for Type 41 Pennsylvania tobacco.

According to Eric Probst, Paradise Tobacco Sales auction manager, Type 41 tobacco has never been sold at auction and has

always been sold on the farm. That changed this week. This year more than six million pounds of Type 41 tobacco were sold on the farm prior to the auction for \$1.10 per pound. However, thanks to Paradise Tobacco Sales and those farmers who broke tradition and brought Type 41 to market for the first time, \$1.10 was 15 cents short.

Those farmers who waited on the auction and sold 250,000

pounds in the first two sales of the selling season received \$1.25 per pound on Monday and up to \$1.30 on Wednesday of this week for Type 41 Pennsylvania tobacco.

"Because of what happened at the sale here on Monday, the next day the company buyers went back to the local farms and raised their price to \$1.25. Those farmers who sold for \$1.10 automatically received \$1.25," explained Probst.

With 6 million pounds already

sold at \$1.10 of Type 41 Pennsylvania tobacco, the new price meant an addition of nearly \$1 million in the pockets of the county's tobacco farmers.

While wet and rainy weather interrupted tobacco plantings early in the season, it is the dry weather now which is holding up the flow of tobacco coming to market. Without the proper dampness in the air, farmers are unable to prepare their crop for market because

the tobacco is dry and crumbly.

Despite the dry weather, Probst reports good volume for the first sales. Type 609 Maryland leaf brought \$1.50 per pound for 250,000 pounds in two days. Monday's price was warehouse supported, but five buyers bought all the Type 609 at \$1.50 per pound on Wednesday.

A shortage of Type 609 in the southern states and a shortage of both types in the county are supporting strong prices locally. This was also the first week Paradise Sales Tobacco Sales history, according to Probst, that a direct processing company buyer was on the line to buy Type 609.

"The shortage in the south is helping the demand here," said Probst. "The burly market price is strong at \$1.67 in Tennessee and Kentucky, where much of the county's tobacco ends up. With our tobacco here bringing \$1.50 I think farmers could see an increase in price on both Type 41 and Type 609."

Probst's advice to tobacco growers is to keep the tobacco coming to market. "Take a load every sale and work on the averages."

Meridian Knows poultry.

Call one of our Agribusiness lenders

Palmyra Andrew C. Terrell 717-241-6402	Kennett Square John J. Packer, Jr. 717-444-0066	Lancaster Bob Zook 717-295-8577	Reading William Hughes, Blaine Fessler, Doug Darling 315-320-FARM
---	--	--	--

 **Meridian Bank**
Professionals with the personal touch



TRI-COUNTY

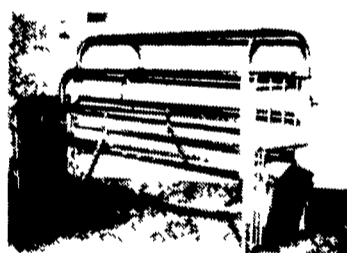
CONFINEMENT SYSTEMS INC.

SETTING THE TREND



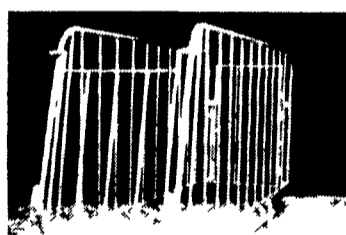
Penning

- 100% Solid Steel Fence
- Easy Open Gates
- Extra Large Floor Plates



Farrowing Crate

- Solid Steel Front Arch Farrowing Crate
- Round Bottom Stainless Steel Sow Feeder



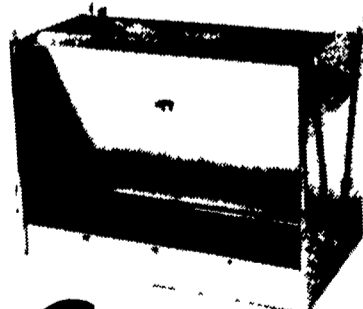
Gestation Crate

- Solid Steel Stalls
- Optional Drop Feed Tubes
- Concrete Feeding & Watering Troughs Available



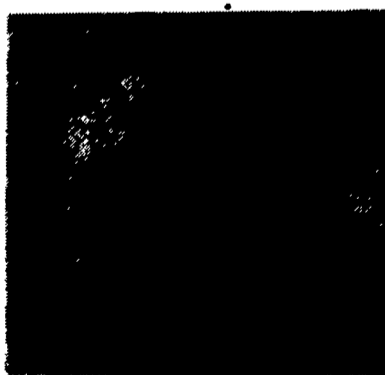
Standard Gang Slats.
Performance and Economy.
4'x5', 4'x6', 4'x8' or 4'x10'

- Wet Cast Gang Slats
- Hand Finished



US Patent 4306518

- Stainless Steel Feeders
- Patent Feed Gate Design



- Aerovent Efficiency Fans & Shutters

Stocking Quality Hog Equipment



TRI-COUNTY
CONFINEMENT SYSTEMS, INC.

808 Evergreen Rd.
Lebanon, PA 17042
Ph. 717-274-8488

STORAGE TRAILERS

For Rent

- ★ Delivered To Your Location
- ★ Safe And Inexpensive Storage

KEENS
SERVICES INC.



717-626-5420

850 Keens Road, Lititz, PA 17543

Commodity Brokers Wanted:

Expanding Central PA full-service Ag Commodity Brokerage firm seeking account reps. to service Eastern Ag Producers in cash merchandising. Sales or marketing experience preferred.

Send Resume to

P.O. Box D-25
c/o Lancaster Farming
P.O. Box 609,
Ephrata, PA 17522