

**1 FARM EQUIPMENT**

Ford 8N \$2500. Farmall H with Kelly Loader \$1250. Farmall C \$1150. Blair Co. 814/224-4056

For most any grain or corn header, call Larry Stalter, "The Combine Man" 1-800-366-2151

For Sale: 489 NH haybine-good condition, 270 NH Baler, Fox Forage Harvester w/pickup head, Fox Blower-reasonably priced. 717-536-3467.

**FOR SALE:** 4-row Dahlgren potato planter, model PC-450, serial #8007, 1985 cup-type. Asking \$12,000. George Coombs & Sons, RR2, Highway 77, Elmer, NJ. 08318. 609-358-2589

**FOR SALE:** Case 1030 diesel, 540rpm, PTO, WFE, 2 remotes, excellent condition, \$3,700 OBO. (717)523-8316.

NI conditioner #270, hay cutter or stalk chopper. 301-941-1113 after 5 p.m

OMC, 540, hay and corn stalk stacker, excellent, shedded (717)247-7858 (717)247-7212.

Oswald trailer mixer feeder, model 320, SS bottom/sides augers, good condition w/new unloading discharge. J-Star scale system Call Marlin Hoff 301-775-7670

**PARTS PRICED RIGHT CRAWLER TRACTOR PARTS**

**CURRENTLY DISMANTLING** AC, Cat, IHC, JD, Case, Michigan, Hough, Galion and others Loaders, dozers, graders, excavators, backhoes Many parts removed & checked, ship anywhere.

**NATIONWIDE PARTS LOCATER SERVICE NEW**

**ARRIVALS FOR DISMANTLING** Case 680E backhoe, IH 500 dozer, CAT 977L, JD 644 Loader, Trojan 154, Trojan 204, IH TD-6 Drott Loader. And more inventory changes weekly.

**BALANDA EQUIPMENT CO.**  
PO Box 407  
Route 29  
Palm, PA 18070  
1-800-322-8030

INT 1466 diesel 145hp TA 2500 hrs., excellent condition. \$11,500. 717/345-4109

Int 241 round baler, \$1,700. 301-876-1956

Int. 315 hydro combine w/ cab, 10' grain and 227-2RW corn head, good condition, \$2,500. (717)624-4902.

International 2400 Backhoe loader with 3 cyl diesel, ROPS. Good condition. \$5,000 Balanda Equipment Co., 215-679-3900.

International H tractor needs motor work, \$1,250 (215)399-1399 after 7 p.m

Irrigation pipe for sale 1,950' 6" 70 pcs 40'4" w/ sprinklers 8 pcs 40'3" w/ sprinklers Includes elbows, tees, plugs, hydrants, valves & various couplings. \$5,000 Call after 5' 717/597-9152 or 609/259-2043

JD 1010 gas, WF, w/ loader, NO 3PT \$2800 301-898-7426

JD 146 loader with independent valve, good condition Best offer. Lanc Co. 717-733-0660.

JD 2020 diesel w/JD 48 loader, nice condition \$6,500. 717-532-7054

JD 2020 gas, excellent, low hrs., \$5,000. 301-833-9091

IH hydro 70, nice original local tractor, \$8,500. 301-833-9091

PEQUEA (side discharge) tandem wheel manure spreader, 1700 gallon, demo, like new, (717)768-3197.

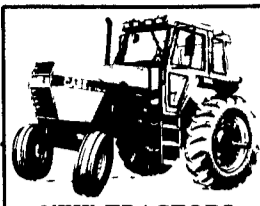
RIPPER fits Case skid loader, unused, \$450 301-833-9091

Satoh Beaver 15HP Diesel w/54" Belly Mower, new condition \$4250 Blair Co 814/224-4056

TIRONIE'S TARPS SHIPPED ANYWHERE 717-584-2928 anytime

Tractor tires chains double ring size 15 5x38, good as new, \$175 York Co Call 717-755-8170

USED TRACTOR PARTS, also rebuilt clutches and torques We ship UPS Hill-T Farm Sales = Service, 4295 Richmond Palestine Road, New Madison, Ohio 45346. 513-548-0718.



**NEW TRACTORS**

**CASE-IH**

- 245 2WD Turf Tires
- 255 AWD Ag Tires
- 275 2WD Ag Tires
- 275 AWD Ag Tires
- 385 AWD
- 585 AWD

**NEW EQUIPMENT**

- 2200 Loader
- (2) 2250 Loaders
- 2255 Loader
- (3) Woods Dixie- 5' RM 59
- Woods 6'x7' 3 Pt. Blades

**USED EQUIPMENT**

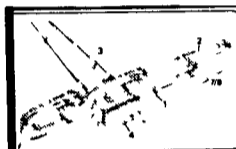
- Int. 400 Snow Blade LD. Mount
- Woods Dixie 5'
- Woods RM90
- Woods 42"- FAR. Cub

**USED TRACTORS LAWN & GARDEN**

- Simplicity 5116 w/Bagger
- Cub Cadet 102 w/Mower & Blower
- Cub Cadet 482 w/38" Mower
- Cub Cadet 800 w/38" Mower
- Int. 184 Lo-Boy w/Woods RM 59 & 222 Side Mower

**LAMB'S FARM MACHINERY**  
Thorndale, PA  
Phone 215-269-2676

**Attention: Over 1/2 Lbs. Extra Steel Per Link**



**For Less Wear On Your Sprocket And Many More Years Of Life Even At Competition Price. Today Special Also On Paddles Only, Order Now Lanc. Co. 215-445-5309**

**Your Headquarters for Tractor Savings**

**IN STOCK: JD 2155, 2 WD, 45 HP  
JD 2555 MFWD, 65 HP  
JD 2955 MFWD, 95 HP**

**CHOOSE ONE OF THESE GREAT BUYERS' INCENTIVES:**

<b>Waiver Of Finance Charges Till May 1, 1990</b>	<b>Low APR Finance Rates:</b> 6.9% - 24 Mo. 8.5% - 36 Mo. 9.5% - 48 Mo. 10.5% - 60 Mo.	<b>Cash Discount In Lieu Of Waiver Or Low Rate APR Rates From \$325 to \$1,400 Depending On Model</b>
---	--	---

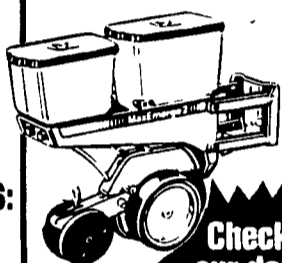


4055 Tractor With Mechanical Front-Wheel Drive

*There's Never Been A Better Time To Buy - Call Now!*

- Other Models & Sizes Available
- Good Trade-In Prices Given - We Want Your Used Tractor!

**TWO ROW MAX EMERGE II VERSA FRAME PLANTERS**



**Check our deal**

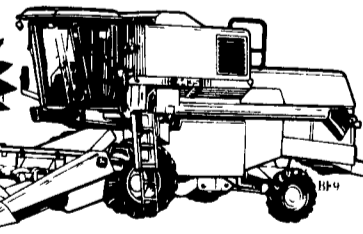
- Max Emerge Planting Accuracy In No-Till, Minimum Till Or Conventional Till
  - Plant "In Furrow" And Under Plastic With Optional Furrower Attachments
  - Infinite Row Spacings From 15" - 40"
  - All Units Built To Your Needs And Specifications With John Deere Components
- Attention: Sweet Corn Growers - Order Now For Spring!

**NEW FOR '89**

John Deere 4435.

**DRESSED-UP FEATURES. STRIPPED-DOWN PRICE.**

**We're dealin'**



- Works four rows or 18-foot widths
- Great new cab visibility and comfort
- Dual-range cylinder speed available
- Multi function control lever

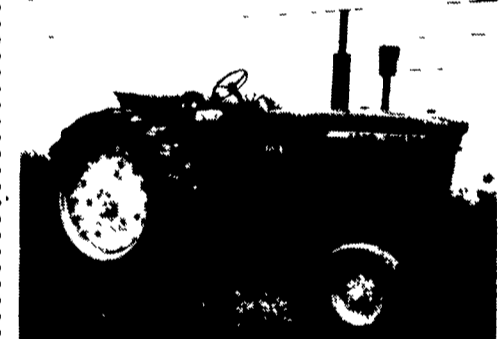
**JD 4435 COMBINE -**

**CHOOSE ONE OF THESE GREAT BUYERS' INCENTIVES:**

- \$1550 Cash Discount
- OR
- Finance Waiver Till Sept. 1, 1990
- OR
- Low APR Finance Rates - 8.5% - 36 Mo. 11.5% - 60 Mo.

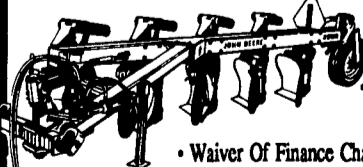
**JD 3020**

Diesel, WFE, Nice \$5,700  
No Sunday Calls  
(717) 532-8926



**NEW FROM JOHN DEERE HERE NOW, THE NEW MEDIUM-DUTY SEMI-INTEGRAL PLOW**

- All new 2000 Plow offers John Deere performance affordable price
- Ideal for tractors up to 150 hp!
- Great for light to medium residue



**IN STOCK: Model 2000 5 Bottom**  
• Extra Discounts Now Through February  
• Waiver Of Finance Charges Till March 1, 1990

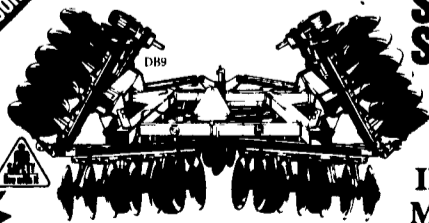
**Good deal!**

**John Deere Snow Blowers Cut Snow Removal Time & Make Quick Work Of Plugged Lanes And Drifted Farm Yards.**



**Coming In: Model 676 Snowblower, 6 1/2', 540 RPM, 40-75 HP Required.**

**NEW FROM JOHN DEERE 600 SERIES TANDEM DISKS. SIMPLE, STRONG.**



- More beef, more "high reliability" features... but value priced!

**IN STOCK: MODEL 630 17'11"**

- Extra Discount Now Through Feb.
- Waiver Of Finance Until March 1, 1990



Mon.-Fri. 7:30 AM to 5:30 PM  
Sat. 7:30 AM to Noon



110 S. Railroad Ave. • New Holland, PA 17857 • 717-354-4731

**DUE TO BEING DISCONTINUED AS A NEW HOLLAND DEALER, WE HAVE THE FOLLOWING NEW MACHINES AND ATTACHMENTS TO LIQUIDATE**

- 770 Pick-Up Head
- 880 Pickup Head
- Silo Pipe - 3' & 6' Sections
- Fork Lift Attachment For Small Frame Loader
- Forklift For Large Frame - Hyd. Endgate For 520, 680 Spreader
- #800, 858 Manure Fork for L-250
- Manure bucket for small loader - no tines
- Glass door kit for older small frame loaders (425, 445)
- 1/2 Turn bale chute

**ALL PIECES SOLD AS IS - ALL ARE NEW, SOME WEATHERED. PRICED AT APPROX. 50% OF CURRENT LIST PRICE. CASH ONLY**

**M&R EQUIPMENT, INC.**  
New Park, PA  
(717) 993-2511