

# Lebanon County DHIA

(Continued from Page A41)

Dale Hostetter & Sons	3	100.2	19,300	769
Donald G Hoffer	3	46.0	20,742	766
Reuben O Martin	B3	77.9	20,269	765

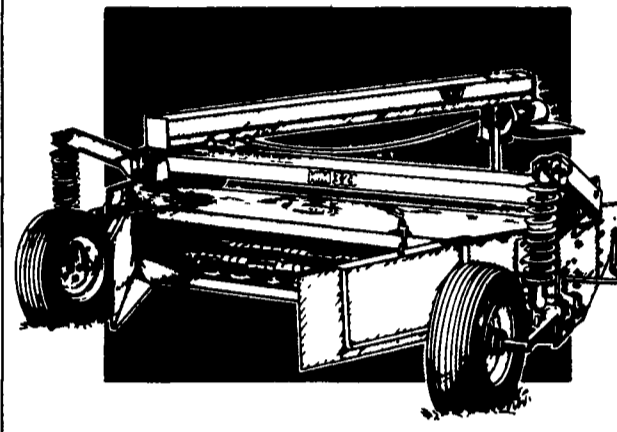
Lifetime Production				
Name	Barn Name	Cow Brd.	Milk	Fat Lact.
Robert B Smith				
49		2	139,319	5,995 9
17		2	131,237	6,591 9
Kenneth I Sellers				
Echo		3	163,219	6,842 7
Faith		3	150,724	6,024 7
Willow Maple Farm				
G-Snap		3	130,526	4,505 4
David Brandt				
75		3	154,024	5,071 6
Harvey T Bomgardner				
Sheila		3	184,798	6,505 9
Marvin K Meyers & Sons				
Trudy		3	154,451	5,989 5
Taffy		3	140,800	5,015 6
Ernest Wagner				
284		3	103,572	3,858 6
Dale Hostetter & Sons				
59		3	148,534	6,540 7
31		3	139,683	4,639 5
Richard & Ronald Shirk				
Matilda		3	200,024	6,985 9
Elsie		3	155,412	5,751 9
Mark Copenhaver				
125		3	158,071	4,561 7
94		3	145,625	5,451 8
109		3	135,264	4,770 7
Dennis Wampler				
97		3	144,805	4,582 6
Lynn W Moyer				
29		3	186,373	6,815 9
24		3	137,217	5,094 7
David Eugene Reiff				
Ida		3	135,406	5,351 5
Twin Maple Farm				
65Misty		3	139,812	4,849 6
J Richard Bomberger				
38		3	161,931	5,318 8
42		3	137,198	4,611 6
Elson Hostetter				
Debbie		3	148,848	5,042 7
Mark C Patches				
223		3	215,418	6,770 8
203		3	176,544	6,152 9
11		3	155,797	5,618 8
74		3	147,278	5,233 6
Ralph H Emrich & Son				
22		3	155,508	6,166 10
Allen H Leinbach				
Bertha		3	159,691	5,860 7
John D Bomgardner				
Ronda		3	141,208	5,459 10
Arthur R Krall & Son				
Colette		3	176,791	5,628 10
Celeste		3	163,255	5,963 6
Becky		3	158,503	5,971 6
Stacy		3	136,081	4,661 6
Hershey Bare				
63		3	144,603	5,996 7
Reuben O Martin				
Patsy		3	171,075	5,513 8
Damask		3	164,391	5,232 7
Honey		3	149,390	5,291 6
Carl J Bross				
24		3	146,305	5,283 7
Barry Donmoyer				
200		3	177,454	6,588 10
206		3	148,253	5,256 7
58		3	136,287	4,899 8
Ernest P Detweiler				
Lorna		3	149,594	5,924 7
Arnold Acres				
Pauline		3	203,439	7,520 8
Walter K Heisey				
15		3	173,405	6,383 8
30		3	155,983	5,763 8

Slit	3	152,334	5,387	8
69	3	139,059	5,712	7
Ivan M Weiler				
Star	3	173,866	6,610	9
Donald G Hoffer				
84 Y	3	141,340	4,811	6
Robert B Bollinger				
B 7	3	175,769	6,592	7
Vincent A Wagner				
6	3	229,254	8,904	10
11	3	187,739	6,476	9
Leon H Kline				
Toni	3	170,395	6,355	7
Gold	3	169,087	5,198	7
Yvonne	3	162,908	5,860	6
Roy E Nolt				
8	3	164,589	5,797	6
Bucher Brothers				
Ellie	3	198,527	6,812	6
Jackie	3	178,729	6,094	9

(Turn to Page A46)



## Fastest cut in the field



Get your hay in the windrow twice as fast as conventional systems with Vicor's KM mower conditioners.

High speed 3-bladed discs make 9000 cuts per minute lifting and slicing clean *without plugging*, even when hay is heavy and wet. Gentle, full width conditioning conserves leaves.

The patented drawbar and drive system lets you operate non-stop, cornering under full power without driveline vibration.

Want a faster harvest? Choose from four dependable KM models with working widths from 7'10" to 10'6", or the new 13' centrepivot unit.

And now, all models carry a new, two-year power train warranty!

### Penna. Dealers

See One Of These Dealers For Details!

**BURCHFIELDS, INC.**  
112 S. Railroad St.  
Martinsburg, Pa.  
814-793-2194

**STOUFFER BROS.**  
1066 Lincoln Way West  
Chambersburg, Pa.  
717-263-8424

**MELVIN J. SHEFFER, INC.**  
121 Railroad St.  
Hanover, Pa.  
717-637-3808

**TRIPLE H EQUIPMENT**  
RD 1 Box 141  
Peach Bottom, Pa.  
717-648-3775

**M.M. WEAVER & SONS**  
169 N. Groffdale Rd.  
Leola, Pa.  
717-656-2321

### Maryland Dealers

**ELLIOTT EQUIP. & HARDWARE**  
Rt. 328 & Elliott Rd.  
Easton, MD  
301-822-8866

**E.T. CLINE & SONS**  
510 E. Wilson Blvd.  
Hagerstown, MD  
301-739-2223

**BEEMERVILLE EQUIP.**  
Rd 3, Box 610  
Sussex, NJ  
201-875-5672

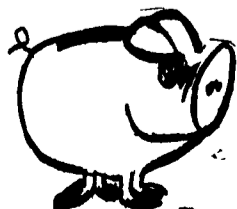
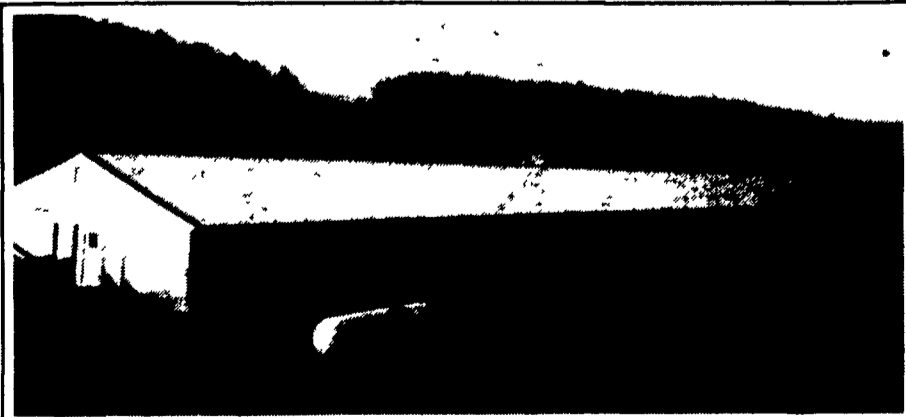
**SCHAPER BROS.**  
RD 8, Box 270  
Bridgeton, NJ  
609-455-1640

### New Jersey Dealers

**H.B. DUVALL**  
901 East Patrick St.  
Frederick, MD  
301-662-1125  
(Outside MD) 1-800-423-4032



**REED BROS.**  
Potticoat Bridge Rd.  
Columbus, NJ  
609-267-3363



250 Sow Farrow Thru Feeder Facility Located In McAlisterville

Production Contracts And Financing Available

Let FARMER BQY AG's Experienced Staff Design To Build, Remodel Or Repair Your Facility To Your Specifications For Your Sow Unit Or Finishing Barn

Swine & Poultry Systems Specialists

# FARMER BOY AG. INC.

410 E LINCOLN AVE

MYERSTOWN, PA 17067

PH 717-866-7565

24 Hour Service