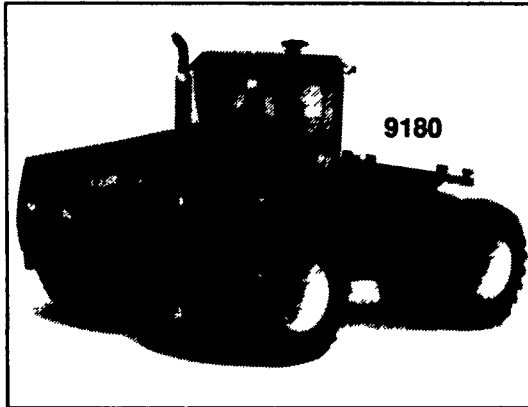


QUALITY TRACTORS & SERVICE



STEIGER-built 4WD tractors are the standard by which all other tractors are measured...

- | | |
|---------------|---------------|
| 9110 - 200 HP | 9170 - 335 HP |
| 9130 - 220 HP | 9180 - 375 HP |
| 9150 - 280 HP | |



MAGNUM: field proven, fuel efficient tractors with 18 spd. power shift transmission

5 YEAR WARRANTY

- | |
|-------------------|
| 7110 - 130 HP 2WD |
| 7130 - 150 HP or |
| 7130 - 170 HP 4WD |
| 7140 - 195 HP |



85 SERIES: loader tractors, easy on-off loaders, fuel efficient engines, Large hydraulic capacity...

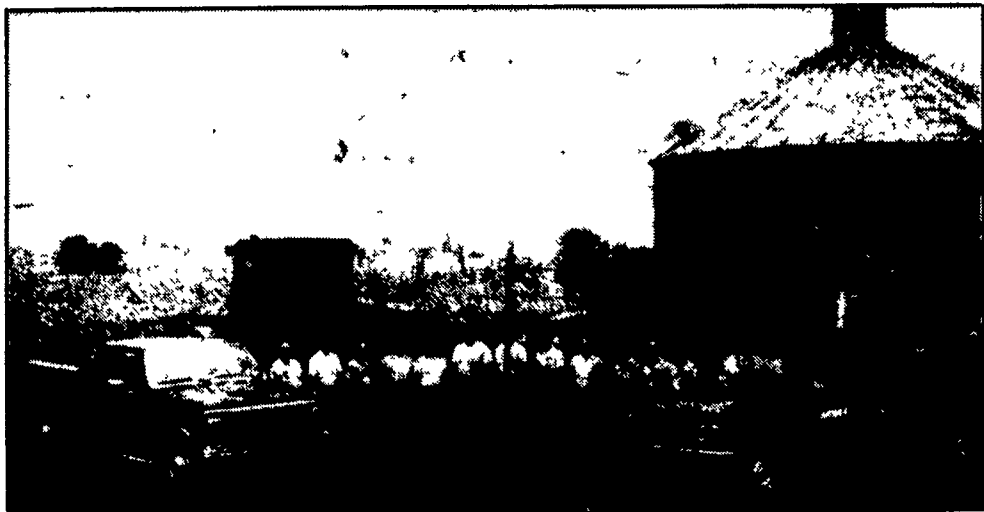
- | | | |
|-------------|------|------|
| 385 - 38 HP | 2 WD | CAB |
| 484 - 45 HP | or | or |
| 585 - 52 HP | 4WD | ROPS |
| 685 - 60 HP | | |
| 885 - 72 HP | | |

Case IH is building quality tractors for Eastern farms - whether you need loader tractors, sub comp plus allage tractors, or large 4WD tractors;

HOOBER HAS THE TRACTOR TO MEET YOUR NEEDS.

CASE IH is the industry leader in tractors technology. CASE IH builds all of its tractors to provide years of dependable service.

CASE IH tractors are serviced by factory trained HOOBER technicians.



BEHIND EVERY TRACTOR HOOBER SELLS IS HOOBER'S TRACTOR SERVICE DEPARTMENT...

"We Care about YOUR problem!"

All New & Used Products
Backed By Hooper
Parts & Service

(717) 768-8231

HOOBER

C.B. HOOBER & SON INC.
INTERCOURSE, PA

