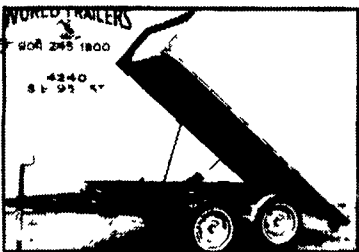


FLAT BED DUMP

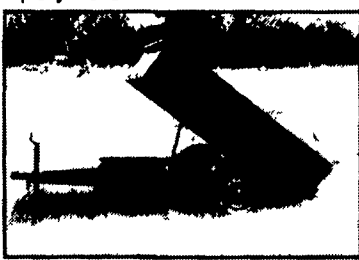


MODEL: A

Bed Length..... 10 ft.
 Bed Width..... 6 ft.
 G.V.W..... 7,000 lbs.
 Axles..... Highway (2) 3,500 lbs.
 Tires..... 14 in.
 Steel..... U.S.A. 12 ga.
 Load Capacity..... 5,600 lbs.
 Frame..... 5" Channel

\$3,495

MINI-BOX DUMP

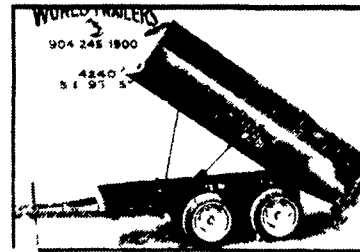


MODEL: L

Bed Length..... 8 ft.
 Bed Width..... 5 ft.
 Bed Height..... 18 in.
 G.V.W..... 3,500 lbs.
 Axles..... Highway (1) 3,500 lbs.
 Tires..... 14 in.
 Steel..... U.S.A. 14 ga.
 Load Capacity..... 2,500 lbs.
 Frame..... 4" Channel

\$2,915

STAKE-SIDE BOX DUMP

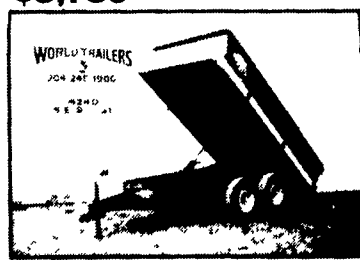


MODEL: C

Bed Length..... 10 ft.
 Bed Width..... 6 ft.
 Bed Height..... 24 in.
 G.V.W..... 7,000 lbs.
 Axles..... Highway (2) 3,500 lbs.
 Tires..... 14 in.
 Steel..... U.S.A. 12 ga.
 Load Capacity..... 5,600 lbs.
 Frame..... 5" Channel

\$3,780

TWIN-CYLINDER BOX DUMP



MODEL: TCB

Bed Length..... 10 ft. to 16 ft.
 Bed Width..... 6 ft. to 8 ft.
 Bed Height..... 2 ft.
 G.V.W..... 12,000 to 24,000 lbs.
 Axles..... Hwy. (2) 6,000 to Dual 15,000 lbs.
 Tires..... 16.5 in.
 Steel..... U.S.A. 12 ga.
 Load Capacity..... 10,000 lbs to 30,000 lbs
 Brake Axles..... 2 Highway Heavy Duty
 Frame..... Structural Steel-12" I Beam

6'x12' In Stock **\$7,235**

- STANDARD FEATURES -

- Coupler 2 5/16 in
- Brake Axles 2 Highway
- Electrical: In conduit
- Tie Down Loops (9)
- 22" 3/8 Safety Chains
- 12 V Hydraulic Pump
- Hide-A-Way Battery Box (Battery not included)
- Many Options Available
- Rubberized Undercoating & Sound Deadener
- Paint: 2 Coats Rust-Proof Primer
3 Coats Commercial Enamel
Standard Color, Black
- Quality Construction Throughout
- Grease Fittings on all Hinged Areas
- Two Year Warranty
- Hydraulic Thrust, 12,500 lbs. to 30,000 lbs.
- Custom Designed Trailers Available

See Our Farm Equipment and Dump Trailer Ad In Section C

Kutz Farm Equipment Inc.
 Pine Grove, PA
 (717) 345-4882

10% Off Listed Price
On Dump Trailers Only
Extended Until 11/30/89
 Bring this coupon with you

KUTZ FARM EQUIP.

MORITZ & GENERIC TRAILERS SPECIAL... \$200 OFF



- STOCK TRAILERS**
- 6' & 12' Bumper Hitch Red 3 Slat
 - 6' & 12' Bumper Hitch Gray 1 Slat
 - 8' & 14' Bumper Hitch Blue 2 Slat
 - 6' & 16' Gooseneck Hitch Tan Custom Built
 - 7' & 18' Gooseneck Hitch Gray 3 Slat
- HORSE TRAILER**
- 6' & 12' Bumper Hitch Red

MARTIN HARDWARE & EQUIPMENT CO. INC.
 Rt. 501, 1 1/2 Miles South of Schaefferstown, PA
 PHONE: (717) 940-0017 or 940-2540
 Mon. & Wed. 9 to 5; Tues., Thurs., Fri. 9 to 6;
 Sat. 9 to 4

YES!! ENGLE FORD DOES MAKE IT EASIER!!

Over 100 New & Used Trucks, Vans & 4x4's

- 1988 Chevy C30 Crew Cab, Auto, A/C
- 1985 Ford F150 Super Cab, w/A/C, Auto, V8
- 1986 Ford F150 XLT, Super Cab, A/C, Auto V8
- 1987 Ford Bronco V8, Auto, cruise control, tilt wheel
- 1986 Chevy 1/2 ton 4x4, Silverado package loaded w/slide-in camper
- 87 Ford Bronco XLT A/C, low mileage
- 86 Chevy Beauville Window Van, 5 passenger, 6 cyl., automatic, 16,000 mi
- 1988 GMC 1 ton dump, V8, 4 spd
- 1986 GMC 1/2 ton pickup, V8, auto, air
- 1988 Ford 1/2 ton cargo van, 6 cyl., auto

ENGLE FORD, INC.
 Rt. 147 North
 Millersburg, PA 17061
 In PA The Call's On Us 1-800-242-8075
 Out of State Call 1-717-692-4841

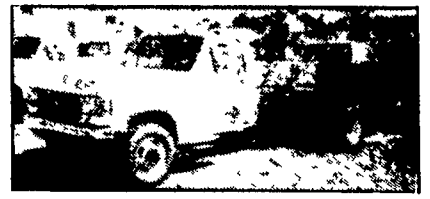
CHOOSE FROM A GREAT SELECTION

FREEDOM

Ford

1989 TRUCK CLEARANCE NOW IN PROGRESS WE'RE DEALING!

"LANCASTER COUNTY'S FORD HEADQUARTERS"



'90 F-SUPERDUTY DIESEL
 161" Wheelbase, Knitted Vinyl Seats, 7.3L Diesel, 5 Spd., Headliner/Insulation Pkg., AM/FM Stereo, Super Engine Cooling, Aux. Tank, All Terrain Tires, #088.
 WAS \$19,642 NOW **\$18,242**



'90 F-250 SUPERCAB 4x4
 5.8L EFI, Auto. Overdrive, XLT Lariat, Light/Conv. Group, Cruise, Tilt, AC, PW, PDL, Tach., Stereo w/Case, Chrome Step Bumper, Deluxe Two-Tone.
 WAS \$23,864 NOW **\$21,661**



'90 F-250 SUPERCAB 4x4 "CAMPER PACKAGE"
 5.8L EFI, Auto. Overdrive, XLT Lariat Trim, Light/Conv. Group, Cruise, Tilt, AC, PW, PDL, Tach., Captains Chairs, Stereo w/Case, Chrome Step Bumper, Spare Tire/Wheel, Deluxe Two-Tone, #059.
 WAS \$21,385 NOW **\$19,685**



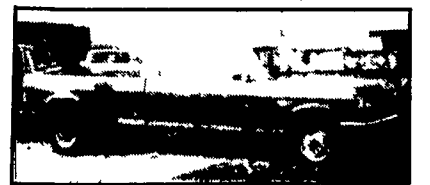
'90 F-250 H.D. 4x4
 "Ready For Winter With Meyer Snow Plow" 5.8L EFT, Auto. Overdrive, Custom Trim, Snow Plow w/Lift & Angle, Sliding Rear Window, Trailer Tow Pkg., Clearance Lights, Step Bumper, All Terrain Tires, Bodydye Molding, Tach, Aux. Fuel Tank, Headliner/Insulation Pkg., Low Mount Mirror, #040.
 WAS \$22,430 NOW **\$20,430**



'90 F-350 CHASSIS
 161" White, 11,000 lb. GVW, 5.8L 8 Cyl., 5 spd., Limited Slip Rear, H.D. Service Pkg., Aux. Fuel Tank, Headliner Pkg. (#053)
 WAS \$16,661 NOW **\$15,400**



'89 F-250 4x2 XLT LARIAT
 Heavy Duty, 5.8L EFI, 8 Cyl., Auto. Overdrive, Trailer Tow Pkg., PW, PDL, Tilt, Cruise, Aux. Fuel Tank, Tach., Deluxe Tu-Tone, Step Bumper, AC, Cassette, Light Group, Conv. Group, Fully Loaded #9450.
 WAS \$18,941 NOW **\$16,500**



'90 CREW CAB DUALY
 7.5L EFT V8, XLT Lariat, Cruise, Tilt, AC, PW, PDL, PS, PB, Dual Tanks, Clearance Lights, AM/FM Stereo, Cass., Sliding Rear Window, Bright Swingaway Mirrors, Tinted Glass, Chrome Step Bumper, Deluxe Two-Tone.
 WAS \$23,770 Now **\$21,491**



'90 F-350 UTILITY BODY
 5.8L, Electronic Auto. Overdrive, Cloth Seats, Headliner/Insulation Pkg., Handling Pkg., AM/FM Stereo, Spare Stk #066.
 WAS \$19,955 Now **\$17,550**



'89 F-350 CHASSIS CAB
 7.5L, V8, Auto, AM/FM Stereo, Vinyl Seats, Aux. Fuel Tank, Spare, Stk #9666.
 WAS \$16,666 Now **\$14,900**

TRUCKS BEDS



Replacement Truck Beds
 A complete line of heavy-duty all steel truck beds for utility or recreational purposes, sizes range from 6' to 12' lengths and fit all Chevrolet, GMC, Ford and Dodge pickup trucks. Sizes also available to fit Toyota, Nissan and other mini trucks. All truck beds have bulkheads constructed from 1 1/2" square tubing, diamond plate beds, rub rails with stake pockets and a 15" drop rear end. Cutouts are provided for tail lights along with mounting plates for marker lights on each corner. All beds are primed and painted standard black.

- Made in U.S.A.
- 8 1/2 x 91" — **\$595**
 - 10 x 91" — **\$725**
 - 12 x 91" — **\$850**

Many other Bodies Available with Stake Sides, Dump Beds, etc. — Installation Available

RINGO HILL FARMS EQUIPMENT CO., INC.
 Rt. 212, Pleasant Valley RD
 Quakertown, Pa. 18951
215-346-7340